



iJRASET

International Journal For Research in
Applied Science and Engineering Technology



INTERNATIONAL JOURNAL FOR RESEARCH

IN APPLIED SCIENCE & ENGINEERING TECHNOLOGY

Volume: 6 Issue: I Month of publication: January 2018

DOI: <http://doi.org/10.22214/ijraset.2018.1383>

www.ijraset.com

Call: ☎ 08813907089

E-mail ID: ijraset@gmail.com

Design and Development of Automation System for J&K State Board of Technical Education

Shakeel Ahmad Dar¹

¹IT Cell Incharge, J&K State Board of Technical Education

Abstract: *Today in this fast moving technological era, time is an important asset and automation is the key. The Jammu and Kashmir State Board of Technical Education is entrusted with the primary responsibilities of registration of students, conduction of examinations and evaluation of students pursuing diploma courses in various engineering and non-engineering fields at Polytechnic and ITI Levels across the entire state of Jammu and Kashmir. Thus the workload of Board is very huge and hence the need for automating all processes to make them effective and timely. The automation system has various stakeholders viz, students, institutes, evaluators board officials like deputy registrar, registrar, secretary and other data entry operators. The processes are broadly categorized into registration and Result Processing. The Different layers of the Automation System are the backend database that is developed in MSSQL, the front end user interface in html and using JavaScript and CSS for scripting and styling and the middleware web server, script for which is written in PHP. In this paper Automation System was developed for JKSBOTE in order to achieve efficiency of the overall processes in terms of cost and time.*

Keywords: *The Jammu and Kashmir State Board of Technical Education (JKSBOTE); Data base; Model; User interface.*

I. INTRODUCTION

The Jammu and Kashmir State Board of Technical Education (JKSBOTE) came into being as an individual entity under the Directorate of Technical Education in 1981. It has now been transformed into an autonomous body by an Act of 2002, of the J&K State Legislature. The volume of the work of the JKSBOTE has increased manifold over the years with the increase in the number of courses offered by the Polytechnics and also the increase in the number of Institutions/Seats. The primary responsibilities of the JKSBOTE are the affiliation of institutes, conduction of examinations and result processing and certification of candidates who are declared successful in the various Programmers at Polytechnic/ITI Levels of J&K State. The Examination Conduction Process starts from creating different examination centers, then issuance of datasheets and then paper setting followed by issuance of examination material to the concerned centers. The answer scripts are then sent back to the board for evaluation. Then the answer scripts are coded with the student detail part hidden to prevent any kind of mischief/ bias for fair evaluation. The evaluators submit the marks and prepare the award rolls(through portal now).The marks are verified again by another checker. Then the process of decoding starts wherein the roll numbers of students are submitted against the codes. The Registrar then links and confirms the two and then the result is generated and declared. In the present paper automation system was developed for JKSBOTE which will ease out the processes of Registration, Examination Form Submission, Admit Card Issuance, Result Processing and Reevaluation Processes. All processes involving huge paper work and manual intervention will be eliminated upto the maximum level possible and will make the system much more transparent, efficient, and convenient and fast for all stake holders.

II. METHODOLOGY

The database design which forms the core of the paper starts with the requirement analysis. In the automation system for JKSBOTE, the information about student, institute, programme, subject, different operators needs to be stored. The Work started with the ER Modeling of the database and after designing and redesigning the following ER Model (Fig.1) was designed for the System.

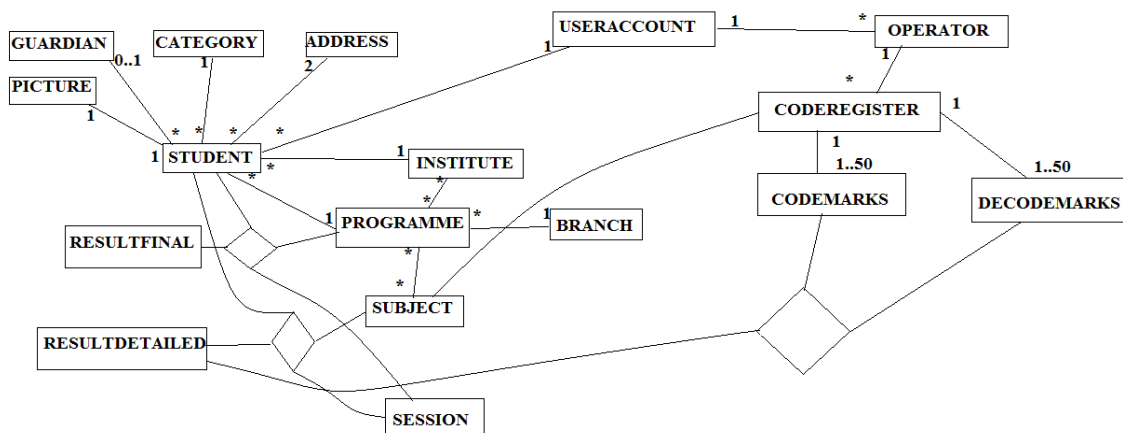


Fig.1-ER Model of JKSBOTE

The user interface is an important part of the overall design. User Interface (UI) Design focuses on anticipating what users might need to do and ensuring that the interface has elements that are easy to access, understand, and use to facilitate those actions. UI brings together concepts from interaction design, visual design, and information architecture. User Interface should go to hand with the user needs. The User Interface for the Project is built using HTML with CSS. In addition JavaScript Features and AJAX were added at many places to make it convenient for different types of users. The different users of the system include admin, Student(For Next Phase),Institute(For Next Phase), Deputy Registrar, Registrar, Secretary, Evaluator, Operator, Decoder. Each of the users of the system has a common interface for login and depending upon the type of user, after successful login, they get the home page as per the role. The Common Interface is shown as in Fig.2. As Shown in the Figure, the main part is the central one which asks for Username and Password. The User enters his/her credentials and depending on the credentials, he is able to login into the system. There is a Common Header and Footer in across all pages of the system. A Sub header is created for individual type of user.

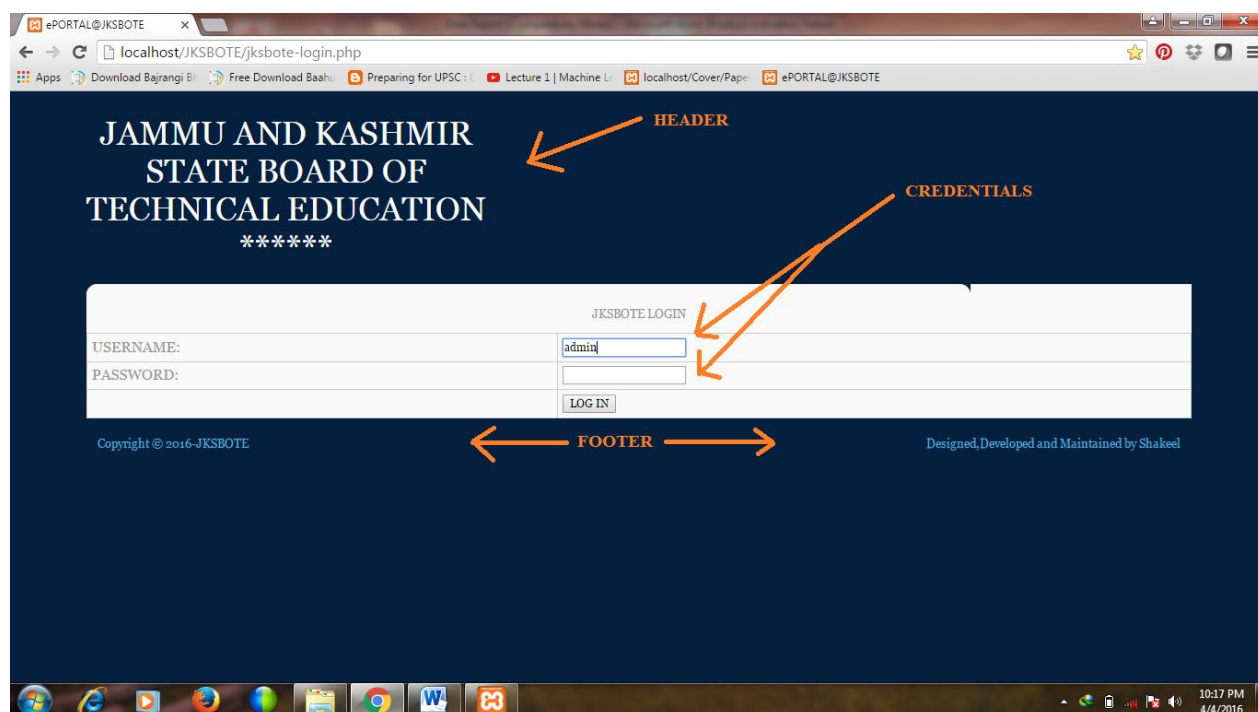


Fig.2 :Common Interface for Log IN

III. RESULTS AND DISCUSSIONS

The development of data base model is described below:

Admin:The administrator is an important user of the system. The interface for admin user mainly comprises of three types of functions viz. Institute/Subject/Programme Administration and hence addition of new institutes, programmes or a new subject in a Programme is entirely controlled by admin. Fig.3 shows the interface which was developed for user through database management.

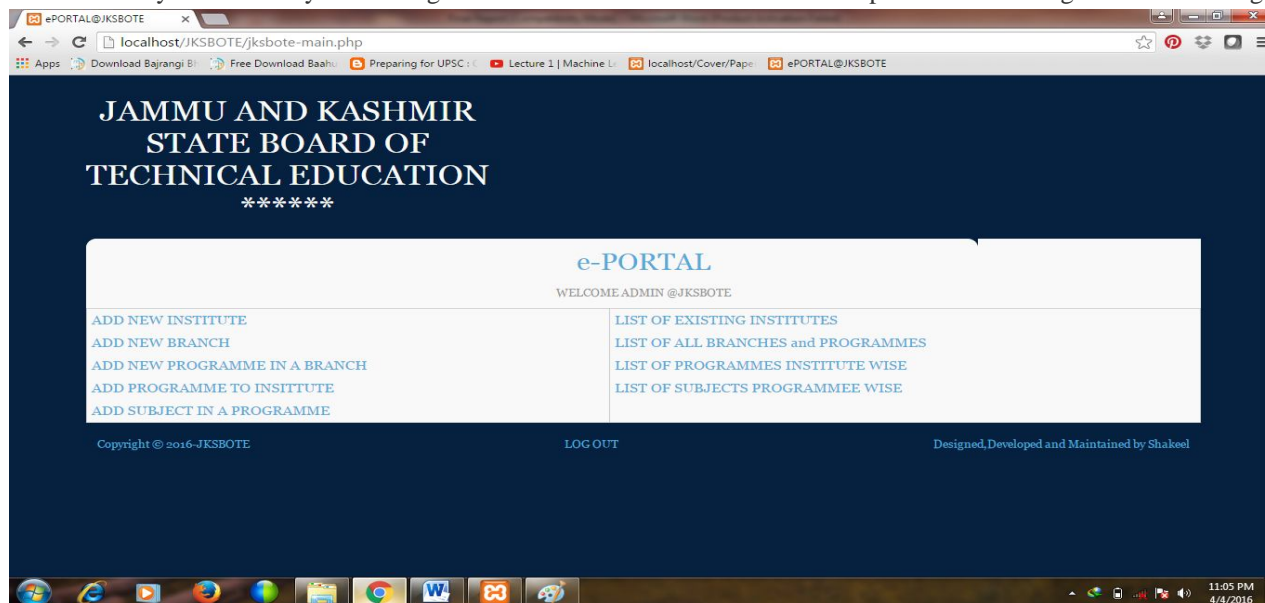


Fig. 3: Institute/Subject/Programme/Branch-Interface for User

This Part of the Admin User interface deals with the Student part. As there are already number of students already registered ,so this feature has been added to register those previously existing students. As new students register only in the months of July/August,it was mandatory to keep this option at admin end only at this point of time . The admin enters the student record (Necessary and Sufficient Data) for successful compilation of result.The Options that the admin has in Student Administration are ,adding new student, adding record of a student , viewing the record and registering the student for semester exams.(Fig.4).In Adding Interface,the admin gets the option of selecting Institute from Drop Down menu and depending upon this selection , the programmes offered in that particular institute are automatically populated. The javascript alongwith Ajax are used for the same.(Fig.5).Besides other details like provisional /Verified Registration ,Lateral Entry /Regular Admission etc are important features. After the admin fills the data ,the flow goes to the admin handler,which contains the bussiness logic.

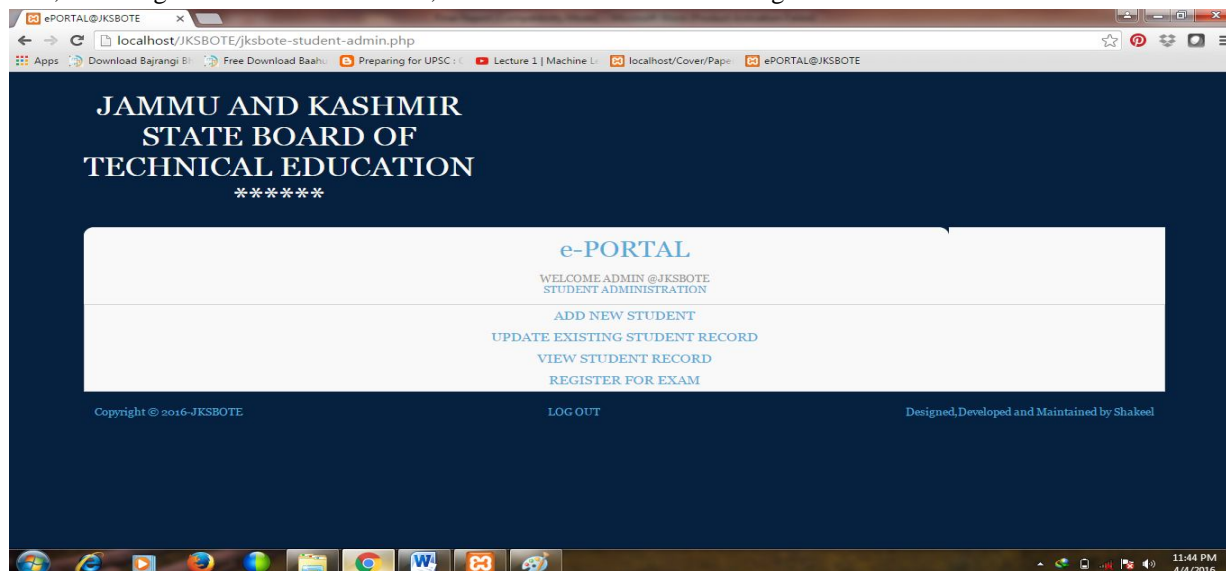


Fig.4: Student Administration

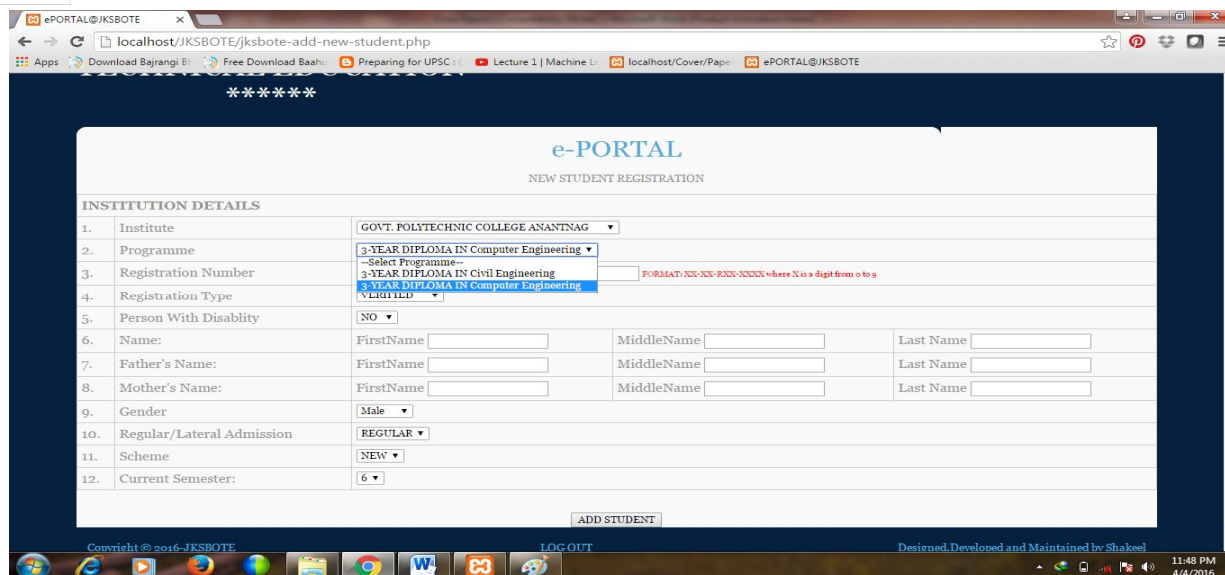
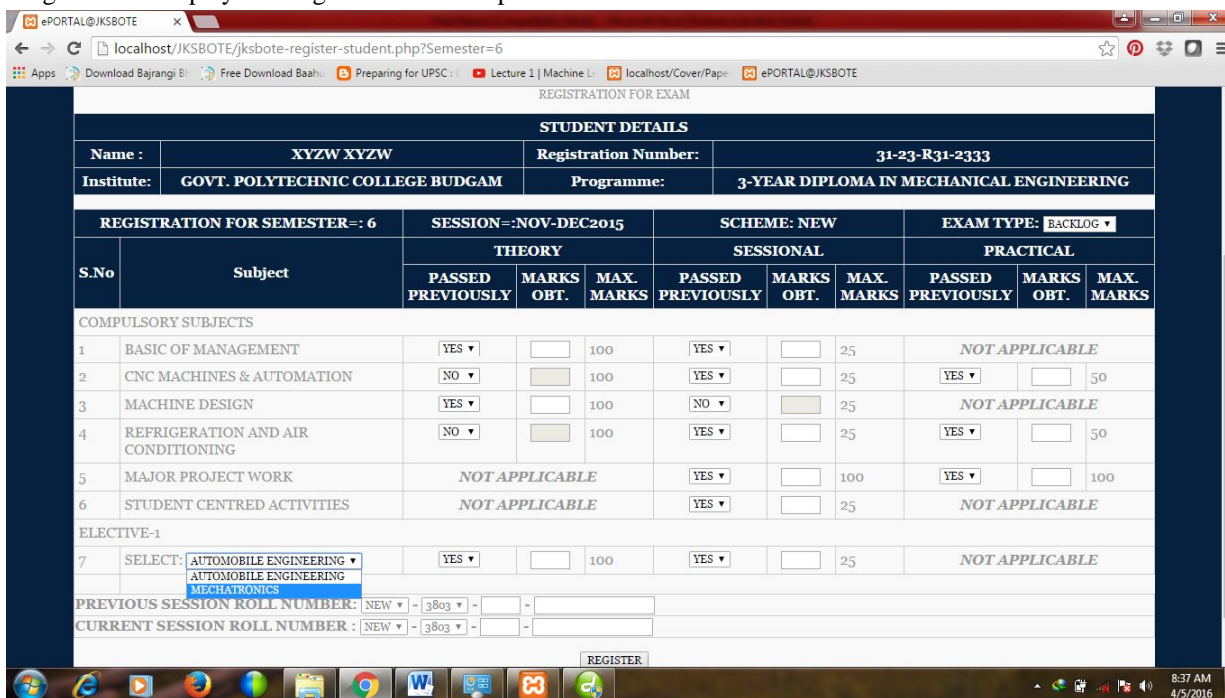


Fig.5: Adding New Student

After Successful Submission of Basic Record, an automated page displays in which the list of subjects for that programme in which student is registered is displayed along with its all components.



REGISTRATION FOR SEMESTER-: 6											
		THEORY			SESSIONAL			PRACTICAL			
S.No	Subject	PASSED PREVIOUSLY	MARKS OBT.	MAX. MARKS	PASSED PREVIOUSLY	MARKS OBT.	MAX. MARKS	PASSED PREVIOUSLY	MARKS OBT.	MAX. MARKS	
COMPULSORY SUBJECTS											
1	BASIC OF MANAGEMENT	YES		100	YES		25	NOT APPLICABLE			
2	CNC MACHINES & AUTOMATION	NO		100	YES		25	YES		50	
3	MACHINE DESIGN	YES		100	NO		25	NOT APPLICABLE			
4	REFRIGERATION AND AIR CONDITIONING	NO		100	YES		25	YES		50	
5	MAJOR PROJECT WORK	NOT APPLICABLE			YES		100	YES		100	
6	STUDENT CENTRED ACTIVITIES	NOT APPLICABLE			YES		25	NOT APPLICABLE			
ELECTIVE-1											
7	SELECT: AUTOMOBILE ENGINEERING	YES		100	YES		25	NOT APPLICABLE			
PREVIOUS SESSION ROLL NUMBER: NEW - 3803 - - -											
CURRENT SESSION ROLL NUMBER: NEW - 3803 - - -											

Fig.6: Registering Student for Semester Exam

The list of Subjects is displayed in two groups, Compulsory Subjects and Elective Subjects. Each Subject has maximum of three components, Theory, Sessional and Practical. Depending on the applicability, the components are shown. Each Component has further three fields, One Whether the Student has previously passed this component or not. If the user chooses no in this, then Marks Obtained is disabled, else admin can enter the marks upto the Maximum marks shown. In the Elective Section, admin gets to choose the elective the student has opted. Also the admin has to enter the student's previous session roll number (in case of Backlog Students) and new roll number allotted for this session. This data is being entered from the already existing result register and new exam forms. After the admin successfully enters the data here, he is redirected to another page where in he gets to submit the record for previous semesters.

IV. CONCLUSION

The project started with an idea and it has been successfully implemented (Phase-I). Earlier a 3rd Party used to be engaged for Result Processing System and the manual system was there for the same at the board's end. Now that is eliminated with the introduction of this much needed system. The data is an asset. Earlier Students were asked a dozen of times to provide the same data during their tenure of studies for applying to various examinations now that all is eliminated, data once supplied will be used and re-used, which would not only save lot of time and energy for all the stakeholders but also will make the system efficient in terms of errors and discrepancies.

REFERENCES

- [1] Codd, E. F. (1970). A Relational Model of Data for Large Shared Data Banks Retrieved on June 12, 2012, from <http://www.seas.upenn.edu/zives/03f/cis550/codd.pdf>
- [2] Sumathi, S., Esakkirajan, S., (2007). Fundamentals of Relational Database Management Systems. (pp. 96-97). Springer-Verlag Berlin Heidelberg.
- [3] King, C. (2012). SAP Innovation Day - Setting a Standard for the Next 40 Years. Retrieved on October 14, 2012 from <http://www.ecommerce-times.com/story/75896.html>
- [4] Bachman, C. (1965). Integrated Data Store." DPMA Quarterly, January.
- [5] Kroenke, D.M., & Auer, D.J., (2012). Database processing: Fundamentals, design, and implementation. (12 ed.). Pearson: Boston.
- [6] Brock, D. (2006). Understanding Moore's Law: Four Decades of Innovation, (pp. 25-37). Chemical Heritage Foundation: Philadelphia, PA.
- [7] Borka, J. B., & Chien A., (2011). Communications of the ACM, Vol.54 No. 5, Pages 67-77, The Future of Microprocessors. Retrieved from <http://cacm.acm.org/magazines/2011/5/107702-the-future-of-microprocessors/fulltext#T1>
- [8] Missbach, M., Hoffman U. (2001). Sap Hardware Solutions: Servers, Storage, and Networks for Mysap.Com (pp. 120-121, 162). Hewlett-Packard Company, PrenticeHall: Upper Saddle River, NJ.
- [9] Education Solutions Unlimited (2006). Introduction to Computer Science (p.126). Dorling Kindersley (India) Pvt. Ltd.
- [10] Vey, G., Krutov, I., (2012). SAP In-Memory Computing on IBM x86 Systems. Retrieved on October 9, 2012, from <http://www.redbooks.ibm.com/redpapers/pdfs/redp4814.pdf>
- [11] Plattner, H., Zeie, A., (2011). In-Memory Data Management: An Inflection Point for Enterprise Applications (pp.1-2). Springer-Verlag Berlin Heidelberg: London, New York.
- [12] Pettey, C., & Tudor, B. (2010). Gartner Survey Shows Data Growth as the Largest Data Center Infrastructure Challenge. Retrieved from <http://www.gartner.com/it/page.jsp?id=1460213>
- [13] Dumbill, E. (2012). Volume, Velocity, Variety: What You Need to Know About Big Data. Retrieved on October 14, 2012, from <http://www.forbes.com/sites/oreillymedia/2012/01/19/volume-velocity-variety-what-you-need-to-know-about-big-data/>
- [14] Stagge, C. (2011). Four Use Cases of SAP HANA. Retrieved on September 29, 2012, from <http://en.sap.info/teched-2011-madrid-sikka-keynotehana/59111>
- [15] Rowe, N. (2012). In-memory Computing: Lifting the Burden of Big Data Retrieved from <http://www.aberdeen.com/Aberdeen-Library/7377/RABig-data-business-intelligence.aspx>



10.22214/IJRASET



45.98



IMPACT FACTOR:
7.129



IMPACT FACTOR:
7.429



INTERNATIONAL JOURNAL FOR RESEARCH

IN APPLIED SCIENCE & ENGINEERING TECHNOLOGY

Call : 08813907089  (24*7 Support on Whatsapp)