



iJRASET

International Journal For Research in
Applied Science and Engineering Technology



INTERNATIONAL JOURNAL FOR RESEARCH

IN APPLIED SCIENCE & ENGINEERING TECHNOLOGY

Volume: 6 Issue: V Month of publication: May 2018

DOI: <http://doi.org/10.22214/ijraset.2018.5288>

www.ijraset.com

Call: ☎ 08813907089

E-mail ID: ijraset@gmail.com

Prediction of Construction Project Performance using Regression Analysis and Artificial Neural Network

Anupama S¹

¹M.E in Construction Engineering and Management, Department of Civil Engineering, R V S Technical Campus Coimbatore-641402, India

Abstract: Assessing project management (or mismanagement) has become an important part of our professional challenge in construction industry today. The unexpected cost overruns and implementation delays result cost overruns and schedule delays of the construction projects and it gives a new meaning to the word performance for project management. Project performance is predicted mainly based on the four performance metrics i.e., cost, schedule, quality, and satisfaction performance. The objective of this research is to develop regression models and neural network models to predict cost performance, schedule performance, quality performance and satisfaction level. Multiple Linear Regression (MLR) and Artificial Neural Network (ANN) technique are used to construct the models to predict project performance, and these models are then compared and validated. This helps to understand the factors that must monitor closely in order for the project success and to forecast performance during the course of the project.

Keywords: Construction Project performance, regression, artificial neural Network, SPSS, MATLAB

I. INTRODUCTION

Forecasting project performance is one of the most demanding tasks in predicting whether the project will be successful. The effective performance of construction project cannot be achieved without challenges and obstacles. This research In most of the construction projects in Kerala, the estimation of cost and schedule is based on a guess work or rough estimate rather than proper calculated effort. Quality performance and satisfaction are often neglected in construction industry. These results in cost and time overrun in construction projects. Multi Linear Regression (MLR) and Artificial Neural Network (ANN) will help the estimator to predict the cost performance, schedule performance, quality performance and overall satisfaction level of the construction projects as MLR and ANN are technique where previous data is used to develop a model using training.

Current research enables practitioners to estimate cost performance, schedule performance, quality performance and overall satisfaction level even before the construction stage. In addition, it provides researchers with the methodology of designing regression models and models for construction project performance, its limitations, and future suggestions. This study is important because project team members will know the important variables that they must pay closer attention to, in order that their construction projects can be completed within budget and schedule, to acceptable level of quality, and to achieve satisfaction. This research introduces the project performance in terms of four performance metrics i.e., cost, schedule, quality, and satisfaction level.

II. OBJECTIVES

- A. To identify and group particular factors (variables) which are significantly related to cost, schedule, quality and client satisfaction performance.
- B. To design the project performance models for cost performance, schedule performance, quality performance and satisfaction level using softwares i.e. regression model (SPSS 16) and ANN model (MATLAB-2015b) .
- C. To validate the models and compare the results to select appropriate models for predicting project performance.

III. RESEARCH METHODOLOGY

On the basis of literature review on factors influencing project performance, 40 factors were identified. A questionnaire is prepared using these factors and collected datas from 50 completed projects . Spearman's correlation coefficient of performance measures are calculated for 40 variables and factors which have significant correlation with cost performance, schedule performance, quality performance, satisfaction level are identified and listed in Table 1,2,3,4

Table 1 Input factors for cost performance model

Sl. No	Factor reference	Factor
1	X1	Gross floor area of the project
2	X2	Presence of special issues
3	X3	Adequacy of contractor's plant and equipment
4	X4	Contractor's ability in financial management
5	X5	Contractor's technical expertise
6	X6	Availability of trained resources
7	X7	Favorable working conditions
8	X9	Type of building
9	X11	Contractor's track record for completion on time
10	X13	Contractor's track record for completion to acceptable quality
11	X14	Contractor's staffing level
12	X15	Level of specialization required of contractors
13	X16	Subcontractors' experience and capability
14	X20	Contractor's track record for completion on budget
15	X21	Design completion when budget is fixed
16	X26	Level of design complexity
17	X28	Climatic conditions at site
18	X37	Level of construction complexity

Table 2 Input factors for schedule performance model

Sl. No	Factor reference	Factor
1	X1	Gross floor area of the project
2	X2	Presence of special issues
3	X3	Adequacy of contractor's plant and equipment
4	X4	Contractor's ability in financial management
5	X5	Contractor's technical expertise
6	X6	Availability of trained resources
7	X7	Favorable working conditions
8	X11	Contractor's track record for completion on time
9	X13	Contractor's track record for completion to acceptable quality
10	X14	Contractor's staffing level
11	X15	Level of specialization required of contractors
12	X16	Subcontractors' experience and capability
13	X20	Contractor's track record for completion on budget
14	X26	Level of design complexity
15	X28	Climatic conditions at site
16	X37	Level of construction complexity

Table 3 Input factors for quality performance model

Sl. No	Factor reference	Factor
1	X1	Gross floor area of the project
2	X2	Presence of special issues
3	X3	Adequacy of contractor's plant and equipment
4	X4	Contractor's ability in financial management
5	X5	Contractor's technical expertise
6	X6	Availability of trained resources
7	X7	Favorable working conditions
8	X9	Type of building
9	X11	Contractor's track record for completion on time
10	X13	Contractor's track record for completion to acceptable quality
11	X14	Contractor's staffing level
12	X15	Level of specialization required of contractors
13	X16	Subcontractors' experience and capability
14	X20	Contractor's track record for completion on budget
15	X26	Level of design complexity
16	X28	Climatic conditions at site
17	X37	Level of construction complexity

Table 4 Input factors for satisfaction level model

Sl. No	Factor reference	Factor
1	X1	Gross floor area of the project
2	X2	Presence of special issues
3	X3	Adequacy of contractor's plant and equipment
4	X4	Contractor's ability in financial management
5	X5	Contractor's technical expertise
6	X6	Availability of trained resources
7	X7	Favorable working conditions
8	X11	Contractor's track record for completion on time
9	X13	Contractor's track record for completion to acceptable quality
10	X14	Contractor's staffing level
11	X15	Level of specialization required of contractors
12	X16	Subcontractors' experience and capability
13	X20	Contractor's track record for completion on budget
14	X26	Level of design complexity
15	X28	Climatic conditions at site
16	X37	Level of construction complexity

There are four performance metrics adopted in this study. These four performance metrics are the dependent variables for the model development. The four performance metrics and their measurements are listed below in Table 5

Table 5. Performance Variables

No	Performance variables	Definition
1(Y1)	Cost growth (%)	$[(\text{Final Project Cost} - \text{Contract Project Cost}) / \text{Contract Project Cost}] * 100$
2(Y2)	Schedule growth (%)	$[(\text{Total time} - \text{Total As-planned time}) / \text{Total as-planned time}] * 100$
3(Y3)	Quality performance	Scale 1-5; 5= exceed expectation; 1=not satisfactory
4(Y4)	Satisfaction level	Scale 1-5; 5= exceed expectation; 1=not satisfactory

A. Regression model development

Regression models, a subset of linear models, are the most important statistical analysis tool. In order to examine how the obtained linear regression equation represents the data, two sets of parameters, R and R² are calculated. Firstly, the linear correlation coefficient, R, measures the strength and the direction of a linear relationship between two variables. The value of R ranges between -1 and +1. R value close to +1 indicates that two variables have strong positive linear correlation. The value of R² lies between 0 and 1. Regression models can be linear or nonlinear, which represent a relation between dependent variables and independent variables. For simple linear regression, only two variables, independent and dependent variables, the fitted linear equation is written as $Y = a + bX$. The coefficient of determination, R², is a statistic that is widely used to determine how well a regression fits the data. R² explains how much of the variability in the dependent variable can be explained by the fact that they are related to the independent variable. The SPSS Software has been used to build all the regression models

B. Artificial Neural Network (ANN) model development

MATLAB is used to develop a neural network that will create the proposed model. Artificial Neural Networks is use as a modelling tool that can enhance current automation efforts in the construction industry. The structure of the neural network model includes an input layer that receive input, hidden layers that serve the purpose of creating an internal representation of the problem, and an output layer, or the solution of the problem. Before solving a problem, neural networks must be ‘trained’. Networks are trained as they examine a smaller portion of the dataset just as they would a normal-sized dataset. Through this training, a network understands the relationships among the variables and establishes the weights between the nodes. Once this learning occurs, a new case can be entered into the network resulting in solutions that offer more accurate prediction or classification of the case. In this study separate MATLAB Based NEURAL NETWORK models are developed for predicting cost performance, schedule performance, quality performance and satisfaction level. Out of forty significant factors considered a set of important factors were identified which effect each performance metrics using Spearman’s correlation as explained earlier. These identified set are used as input data and are imported and can load datasets.

C. Comparison of Regression and ANN Models

The model was validated by comparing the cost growth, Schedule growth, quality and satisfaction level obtained from the model and that occurred for the construction project. Five new project data sets were collected, and used to validate the constructed models. The predicted results were then compared with actual results.

Generally, the aim of this analysis was to come up with the comparable models results obtained based on artificial neural networks and regression analysis. The relative measure of accuracy are used to compare the results. Percentage error (PE), Mean Square Error (MSE), Root Mean Square Error (RMSE), Mean Absolute Percentage Error (MAPE) values of both regression and ANN are compared for the same data. Lower these error better the prediction accuracy.

$$\text{Percentage Error (PE)} = ((\text{Actual value} - \text{Predicted value}) \div \text{Actual value}) \times 100$$

$$\text{Mean Square Error (MSE)} = \sum_{i=1}^n ((\text{Actual value} - \text{Predicted value})^2) \div n$$

$$\text{Root Mean Square Error (RMSE)} = \sqrt{\text{MSE}}$$

$$\text{Mean Absolute Percentage Error (MAPE)} = (\sum_{i=1}^n (\text{PE})) \div n$$

Table 6.Comparison of cost performance models

Project number	1	2	3	4	5
Actual cost growth	8.5	8.25	6.2	13.5	15
Predicted cost growth by regression model	9.014	10.090	7.473	10.306	13.266
Predicted cost growth by ANN model	8.78	8.43	6.38	13.85	15.47
Percentage error(%) by regression model	-6.05	-22.30	-20.53	23.66	11.56
Percentage error by ANN model	-3.29	-2.18	-2.90	-2.59	-3.13
MSE of regression model	3.696				
MSE of ANN model	0.096				
RMSE of regression model	1.922				
RMSE of ANN model	0.309				
MAPE of regression model	16.82%				
MAPE of ANN model	2.82 %				

Cost growth predicted by regression has more deviation from the actual cost growth than the ANN models. Error values of ANN is also very low compared to regression model. Cost growth model can be thus better predicted with ANN model. NSimilarly schedule performance, quality performance and satisfaction level models are also compared as follows.

Table 7 Comparison of schedule performance models

Project number	1	2	3	4	5
Actual schedule growth	44.44	33.33	50	44.44	33.33
Predicted schedule growth by regression model	40.747	19.827	43.115	47.096	44.475
Predicted schedule growth by ANN model	41.896	32.52	55.025	45.901	37.28
Percentage error(%) by regression model	8.31	40.51	13.77	-5.98	-33.44
Percentage error by ANN model	5.72	2.43	-10.05	-3.29	-11.85
MSE of regression model	74.93				
MSE of ANN model	10.02				
RMSE of regression model	8.66				
RMSE of ANN model	3.17				
MAPE of regression model	20.40%				
MAPE of ANN model	6.67 %				

Table 8 Comparison of quality performance models

Project number	1	2	3	4	5
Actual quality performance	4	3	4	4	4
Predicted quality performance by regression model	2.88	3.58	2.79	2.67	2.61
Predicted quality performance by ANN model	4.5	3.4	4.3	4.1	3.7
Percentage error(%) by regression model	27.92	-19.48	30.25	33.18	34.71
Percentage error by ANN model	-12.50	-13.33	-7.50	-2.50	7.50
MSE of regression model	1.35				
MSE of ANN model	0.12				
RMSE of regression model	1.16				
RMSE of ANN model	0.35				
MAPE of regression model	29.11%				
MAPE of ANN model	8.67%				

Table 9 Comparison of satisfaction level models

Project number	1	2	3	4	5
Actual satisfaction level	4	3	3	3	4
Predicted satisfaction level by regression model	2.19	1.45	2.11	1.72	1.29
Predicted satisfaction level by ANN model	4.23	2.99	3.38	2.73	3.8
Percentage error by regression model	45.22	51.67	29.70	42.52	67.83
Percentage error by ANN model	-5.75	0.33	-12.67	9.00	5.00
MSE of regression model	3.09				
MSE of ANN model	0.06				
RMSE of regression model	1.76				
RMSE of ANN model	0.25				
MAPE of regression model	47.39%				
MAPE of ANN model	6.55%				

Percentage error obtained from all regression models are high compared to ANN models. Actual performance is more close to the performance predicted by ANN models than the regression models. MSE, RMSE, MAPE are the relative measures of accuracy. They are also very low compared to regression models.

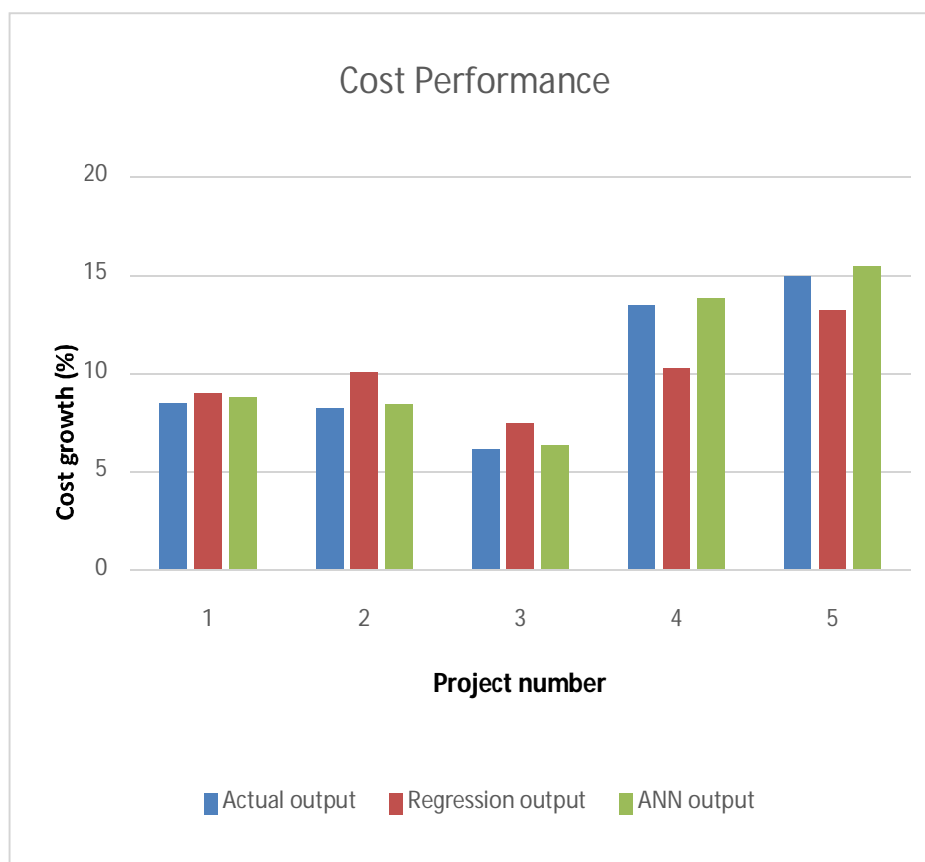


Figure 1. Cost performance by ANN model and regression model

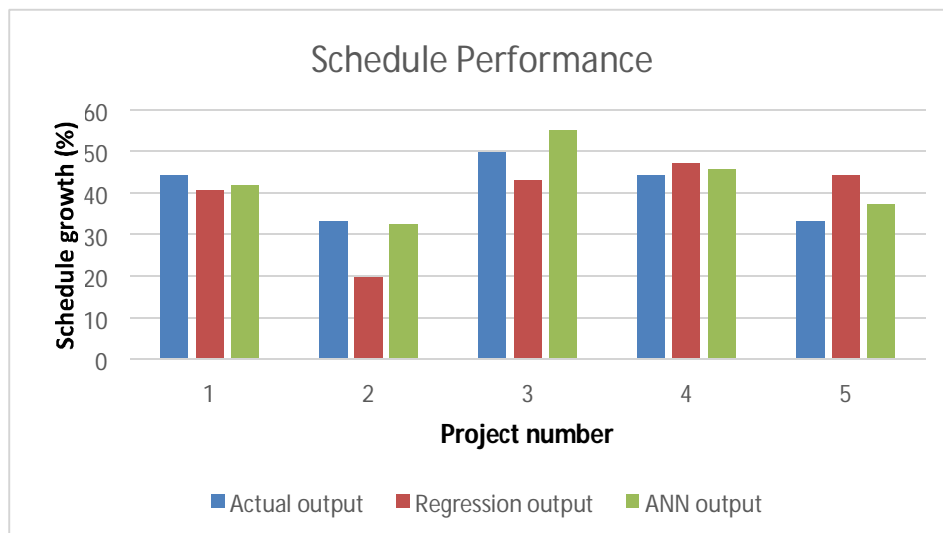


Figure 2. Schedule performance by ANN model and regression model



Figure 3. Quality performance by ANN model and regression model



Figure 4. Satisfaction level by ANN model and regression model

From the analysis of the results obtained from ANN models and regression models we can conclude that the ANN models fit the construction project performance models value more than the regression models.

IV. CONCLUSION

The aim of this research was to identify the most important factors affecting construction project performance. The factors were identified through literature survey and 40 significant factors were selected for second round data collection. After the correlation analysis factors which have high degree of correlation with performance metrics are selected for developing regression and artificial neural network models that would predict the cost growth, schedule growth, quality performance, quality performance and satisfaction level. Regression is the method of statistical calculation to predict a value in terms of the past information. Regression analysis performed in this attempt developed based on the historical data. Regression models were developed with the help of SPSS. Artificial Neural Network is a machine learning technique suitable for complex cases requiring large number of parameters to be considered in parallel. Models were developed with the help of MATLAB. The models were trained and tested using the data collected from different projects. At the current state of building construction in the region, ANN is most suitable for predicting the construction project performance.

REFERENCES

- [1] Adnan Enshassi, Sherif Mohamed and Saleh Abushaban (2009), Factors Affecting the Performance of Construction Projects in The Gaza Strip, J. Constr. Eng. Manage., 15(3), 269-280
- [2] Aftab Hameed Memon, Ismail Abdul Rahman and Ade Asmi Abdul Azis (2012), Time and Cost Performance in Construction Projects in Southern and Central Regions of Peninsular Malaysia, International Journal of Advances in Applied Sciences, 1(1), 45-52
- [3] Albert P. C. Chan, David Scott and Edmond W.M. Lam (2002), Framework of Success Criteria for Design Build Projects, J. Manage. Eng., 18(3), 120-128
- [4] Albert P. C. Chan, C. M. Tam and Danny C. K. Ho (2001), Design and Build Project Success Factors: Multivariate Analysis, J. Constr. Eng. Manage., 127(2), 93-100
- [5] Al-Tabtabai, H.M (1996), Modelling Knowledge and Experience to Predict Project Performance, Project Management Institute 27th Annual Seminar/Symposium, Boston, Massachusetts, 95-9
- [6] Ann T.W. Yu, John Kelly, Kirsty Hunter and Qiping Shen (2007), An Empirical Study of The Variables Affecting Construction Project Briefing/Architectural Programming, International Journal of Project Management, 25(2), 198-212
- [7] Ashraf M. Elazouni, Amal E. Ali, and Refaat H. Abdel-Razek (2005), Estimating the Acceptability of New Formwork Systems Using Neural Networks, J. Constr. Eng. Manage., 131(1), 33-41
- [8] Chien-Ho Ko and Min-Yuan (2007), Dynamic Prediction of Project Success Using Artificial Intelligence, J. Constr. Eng. Manage., 133(4), 316-324
- [9] David Riley, Lipika Swarup, and Sinem Korkmaz, A.M (2011), Project Delivery Metrics for Sustainable, High-Performance Buildings, J. Constr. Eng. Manage., 137(12), 1043-1051
- [10] Dissanayaka S.M. and Kumaraswamy M.M. (1999), Evaluation of Factors Affecting Time and Cost Performance in Hong Kong Building Projects, Eng. Constr. Archit. Manage., 6(3), 287-298
- [11] D. K. H. Chua, Y. C. Kog, and P. K. Loh (1999), Critical Success Factors for Different Project Objectives, J. Constr. Eng. Manage., 125(3), 142-150
- [12] Dr. K. Subramanian and S. Shanmugapriya (2013), Investigation of Significant Factors Influencing Time and Cost Overruns in Indian Construction Projects, International Journal of Emerging Technology and Advanced Engineering, 3(10), 734-740
- [13] Emsley M. W., Lowe D. J., Roy Duff A., Harding A., and Hickson A. (2002), Data Modelling and The Application of A Neural Network Approach to The Prediction of Total Construction Cost, Constr. Manage. Econ., 20(6), 465-472
- [14] Florence Yean Yng Ling, Sui Pheng Low, ShouQing Wang, and Temitope Egbelakin (2008), Models for Predicting Project Performance in China Using Project Management Practices Adopted by Foreign AEC Firms, J. Constr. Eng. Manage., 134(12), 983-990
- [15] Florence Yean Yng Ling and Min Liu (2004), Using Neural Network to Predict Performance of Design-Build Projects in Singapore, Building and Environment, 39, 1263-1274



10.22214/IJRASET



45.98



IMPACT FACTOR:
7.129



IMPACT FACTOR:
7.429



INTERNATIONAL JOURNAL FOR RESEARCH

IN APPLIED SCIENCE & ENGINEERING TECHNOLOGY

Call : 08813907089  (24*7 Support on Whatsapp)