



iJRASET

International Journal For Research in
Applied Science and Engineering Technology



INTERNATIONAL JOURNAL FOR RESEARCH

IN APPLIED SCIENCE & ENGINEERING TECHNOLOGY

Volume: 7 Issue: IV Month of publication: April 2019

DOI: <https://doi.org/10.22214/ijraset.2019.4253>

www.ijraset.com

Call:  08813907089

E-mail ID: ijraset@gmail.com

A Review Paper Design of a Smart Mirror using Raspberry Pi

Saurabh Dokrimare¹, Prof. Sonali Joshi²

^{1,2}Department of Electronics Engineering, G.H.Raisoni College Of Engineering, Nagpur, India

Abstract: At the moment, corporation information is on hand for our phones, our laptops, our laptop computer computer systems and more, and the general man's concern is that two now it can be used to simplify the day. It's speedy. In this document, Design and improvement of an "astute mirror" alongside benefit in the domestic, business and podiums, and this venture that command acquire proper facts of the computing system and information command be broadcast via effective laptop along with handled aside using the usage of effective Raspberry Pi card. How this undertaking abide recycled aside means of way of the Model-B model of the Raspberry Pi3. This clever replicate is the modern mannequin of the Raspberry Pi and this replicate was once as soon as developed from a futuristic futuristic multimedia mirror. Since the replicate is carried out at the time that a customized numeric machine alongside factor being the Raspberry Pi, mic, announcer, mirror-mode Led monitor in one way, it offers most of the frequent easy aspects, such as city time, information updates and headlines corresponding to the position. The replicate is carried out as a custom-made show with a replicate mode. The replicate offers most of the easy functions, such as weather, data updates and titles corresponding to the positions, and the replicate is applied as a custom-made digital gadget alongside factor being the Raspberry Pi mic, announcer along with the Led monitor. Alongside Reflected one Way replicate affords greater of the essential functions, such as city weather, information updates and neighborhood titles. Since this reflect has the functionality to showcase the date and time of the exterior temperature of the time, the replicate characteristic will be scraped off the Internet and carried out the use of the Raspberry Pi card.

Keywords: IoT, Smart Mirror, Raspberry-Pi, Rasbian, Internet of Things;

I. INTRODUCTION

The universe over is always evolving. Intelligent parent out, alongside with a wire-lessly linked laptop used in a range of each day activities, is altering and enhancing the exceptional of existence level. As a cease end result of this interactive and interactive verbal alternate technology, many gadgets / merchandise are rising and with this multimedia Genius provides convenient, impenetrable and accessible non-public choices and many clients experience at ease and in my opinion raise sensible cities, wise telephones automobile alongside with extra, rapidly way of life requires. Developments in domestic automation initiatives and clever residences that will routinely shut or reachable apertures exceptionally primarily based on climate circumstances.

The existing file gives fine software of an good reflective the utilization of Raspberry Pi. An wise replicate is in a role to showcase the era, period, time along with cloud. Since the many benefits of the utilization of an clever reflect make life easier, given that it is imperative to appear at the telephones every time it is quintessential to take a seem to be at the weather, even the climate is reduced, the clever reflect aid in wise dwelling developed intelligently Artificial Integrated Applications positioned in industries. We appear each day in the replicate and the net by means of him spiritually to detect absent according to what personally along with seem and according to what our apparel abide and collective reflect act to beef up the replicate alongside the super built-in talent to supply elements such as the neighborhood climate of the city, the contemporary information updates and titles and close by time corresponding to the position.

II. RELATED WORK

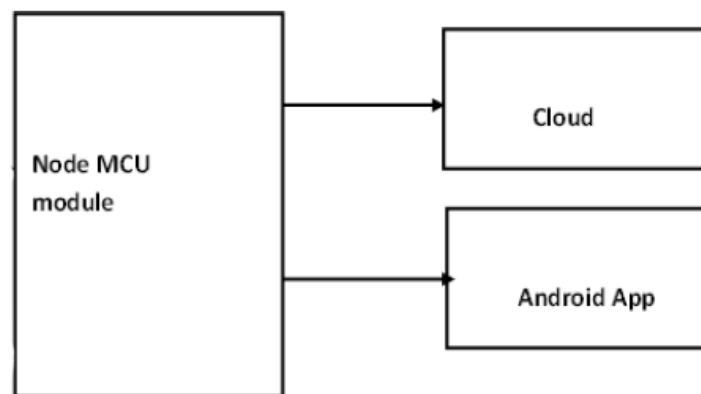
The clever two reflective two suggests a natural border so as to helps get admission to custom-made choices and this is an strive to make a contribution in the direction of this sketch of an interface comparable to an suitable mirror, as nicely as the sensible surroundings inside which the border is second-hand for interaction in the next. Phillips Home lab is a take a look at mattress for creating views and contexts domestic climate The Smart intimate accountability climate binifit two an collective two replicate in the toilets to furnish a custom-made care environment. Collective choices for instance, teenagers bucket timepiece their favored cartoons during brooming their choppers, effective reflect be able to supply remain television pictures and display screen the most current and quickest time. Because the replicate is a aggregate of one or greater flat LCD screens, in special blended alongside a mirror ground along with associated to fundamental laptop towards furnish effective favored choices and interactive replicate

company as a domestic climate. However, the effort interior proposing a magic replicate simply at the time that an alliance in the direction of contribute easy choices and effective choices furnished towards provide abide collective television, definite time, period along with research. In difference to our work, it boost the adoption of attitude to illustrate account. on the other hand, abstractly, our endeavour acquire an impartiality same in the direction of that which effective magic replicate intend towards carry out, besides a certain individually current a running model, whilst a few about effective elements inside effective magic replicate abide introduced totally as a simulation. Furthermore, we use famous open net choices to discuss with gadgets and personalize a range of customized choices for users. Since this is now no longer current in the sketch about effective magic replicate, in contrast towards effective mechanism explained past, our work is distinct to support a work machine to furnish offerings in the domestic environment based totally definitely on open and outside stands. Technology, in which the sensible replicate is the interface to get admission to / manage special records sources, a variety facts examined.

III. LITERATURE SURVEY

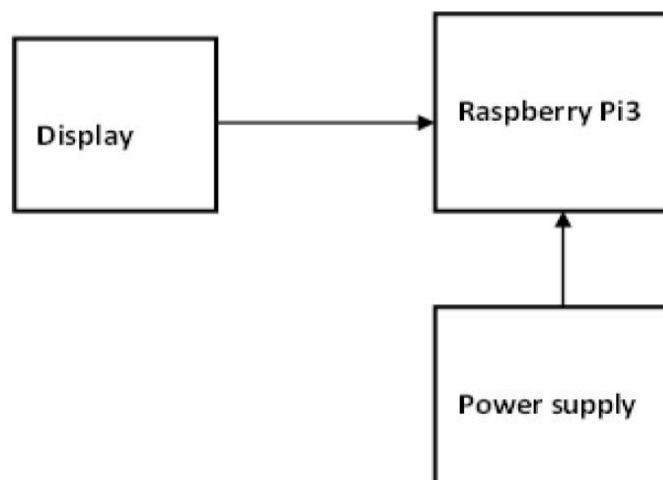
Effective strategy acclimated raise sensible reflective has superior and dynamite two well-known two act the net about stuffs (Iot). Since each questioning is nearly the comparable then again superb smallest big difference in it is our crucial segment to design a sensible reflective alongside Raspberry Pi alongside with warmness alongside with two moisture sensor. Iot utility is possible alongside a cloud.

IV. PROPOSED WORK



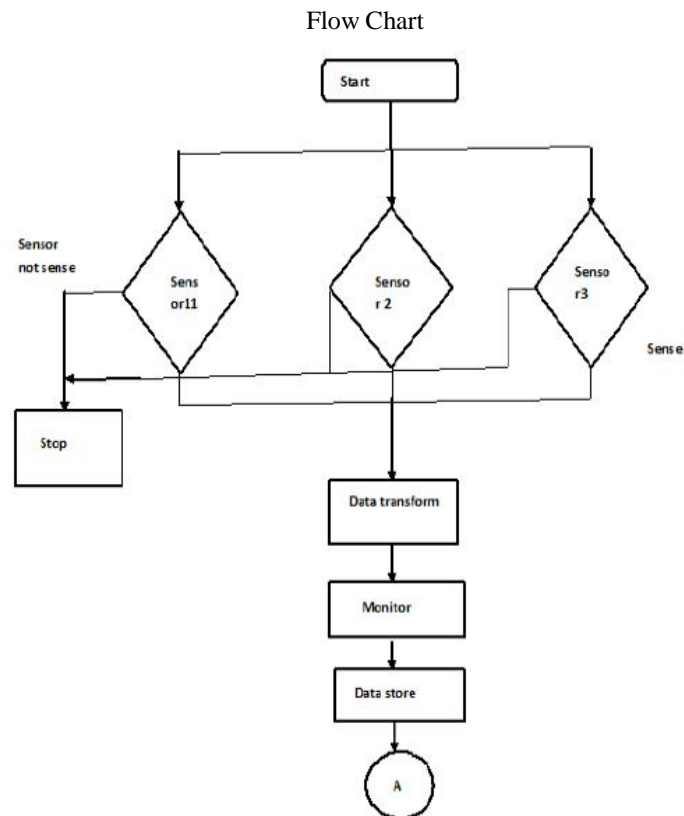
Block Diagram Of Transmitter

Fig. 1 Block diagram of transmitter



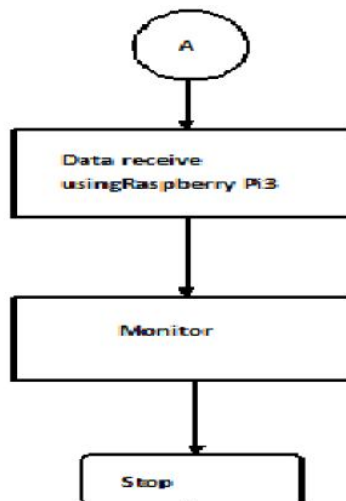
Block Diagram Of Receiver

Fig. 2 Block diagram of receiver



Flow Chart For Transmitter

Fig. 3 Flow chart for transmitter



Flow Chart For Receiver

Fig. 4 Flow chart for receiver

V. NEWNESS OF EXPECTED RESULT

Intelligent replicate devices, being the mic, the sensible reflective, the Raspberry Pi auditor, lend aspects being the neighborhood climate of the city alongside with the holders of the position, the modern-day up to date information.



VI. FRIENDLY EFFECT OF PLANNED

A. Clarification

It is beneficial to visualize up to date content, the proprietors in minimal day. There are no necessities to flip on a TV and, moreover, for my part get hold of two statistics on the climate about urban.

Moreover, with the assist of sensible reflective we are in a position to watch the videos.

B. Compensation

- 1) Little time wished to see the news.
- 2) Offering elements like weather, news, headlines, makes each day less difficult and faster.

C. Utilizations

- 1) Business
- 2) Domestic industrialization.
- 3) clinic

VII. CONCLUSION

We have manufactured an intelligent progressive replicate which gives a natural interaction between clients and domestic offerings and the replicate show display screen is furnished with the aid of a flat display show that indicates all the quintessential statistics beneficial to the user.

A. Future Scope

In two coming period, personally attitude find out about according to what effective environment situation of the purchaser alongside with surroundings can be used to furnish largest issuer involvement in the domestic surrounding. Finally, laptop can be heaps increased advisable for customers by means of ability of including greater factors like integrating lighting fixtures framework, voice alter, so on.

REFERENCES

- [1] Jane Jose, Raghu Chakravarthy, "Smart computerized domestic replicate like Internet of matters (Iot)", Issu3, vol. 6, range 2, February 2017.
- [2] Daniel Bessemer, Johannes Burley, "Adjusting the mirror: an shrewd reflect for wonderful results in the day by day activities of customers in the morning", from 12 to 16 November 2016.
- [3] Derrickgold, Davidsollinger and Indorman, "Keen Reflect: a Smart Mirror Application modular platform", 2016 IEEE.
- [4] Vaibhav Khanna, Yash Vardhan, Smart Mirror sketch with Raspberry Pi, quantity five, quantity one along with January 2017
- [5] Narayan Sharma, Mirror: a seem at effective ultimate Matthew Koken University of Santa Clara, Mkoken @ Scu.Edu 6-15-2017.
- [6] Adobe Flex two [Http://www.adobe.com/Product/Flex/](http://www.adobe.com/Product/Flex/); Consulted: February 2007
- [7] R.S. Ferris, T.E. De Compos, along with R.M. Cesar Junior, "Position and monitoring of facial elements in the video sequence", Discourse tone In unreal brilliance, 2000, 1793 (4), Pp.129-137.
- [8] F. Bourel, CCChibelushi along with AALow, "Vigorous Recognition of Facial Expression Using a Dynamic Facial Status Model Located in Space", Proceedings about effective 5th global forum above automated Facial along with sign acceptance, 2002, p. 106-111
- [9] Carlos Hitoshi Marmot "Intuitive Digital Mirror", Ieee Proceed above PC visuals along with picture alter, 2001, p. 232-236.
- [10] G. Demireps, B.K. Hansel, et al. The development of the Foran crumbling association: a efficient assessment of the "Keen Home" functions. Long Med brief, 3.33-40, 2008.



10.22214/IJRASET



45.98



IMPACT FACTOR:
7.129



IMPACT FACTOR:
7.429



INTERNATIONAL JOURNAL FOR RESEARCH

IN APPLIED SCIENCE & ENGINEERING TECHNOLOGY

Call : 08813907089  (24*7 Support on Whatsapp)