



# **iJRASET**

International Journal For Research in  
Applied Science and Engineering Technology



---

# **INTERNATIONAL JOURNAL FOR RESEARCH**

IN APPLIED SCIENCE & ENGINEERING TECHNOLOGY

---

**Volume: 3**

**Issue: VIII**

**Month of publication: August 2015**

**DOI:**

**[www.ijraset.com](http://www.ijraset.com)**

**Call: ☎ 08813907089**

**E-mail ID: [ijraset@gmail.com](mailto:ijraset@gmail.com)**

# Multi-State Switching Cell for Single Phase Five-Level Inverter

A. Vedavathi<sup>1</sup>, J. Nagarjuna Reddy<sup>2</sup>, A. Suresh Kumar<sup>3</sup>

<sup>1</sup>PG student, <sup>2,3</sup>Assistant Professor, Department of EEE  
RGM CET, Kurnool, AP, India

**Abstract**—for low voltage applications, a new T-type inverter topology based on multi-state switching cell is proposed, when medium (or) high switching frequencies are preferred. In this paper the MSSC application presents two topologies of five level inverter. The T-type inverter topology is compared by the Neutral-Point Clamped topology. As the name indicates T-type the conduction takes place in the form of T-shape. In T-type inverter topology the common emitter configurations are used for the switches, it acts like a bidirectional switch; these switches are used to block the half of the dc-link voltage. Due to the reduced blocking voltage, the switch shows very low switching losses. Thus, the THD of output voltage should be reduced. Since the filter ripple frequency is twice the switching frequency, therefore reducing the magnetic weight and size.

**Key words:** - Multi-state switching cell, Switch configurations, T-type inverter, Dc-Link Voltage, Auto-transformer.

## I. INTRODUCTION

Now a day's the power electronic converters plays a major role in dc-ac converters, which transforms energy from a dc source into an ac source and these are referred as inverters. The dc input power source is present in the systems like, battery bank, photovoltaic solar panels, fuel cells and the output of a rectifier. Among many applications, inverters are used for inductive heating and uninterrupted power supply systems (UPS) which are being more and more popular in the industry. Practically, dc-ac converter obtains a rectangular output with high harmonic component, which is undesirable for many applications. To minimize this problem, pulse width modulation (PWM) technique is implemented. The term multilevel starts with the three-levels of output voltage in inverter, by increasing the number of levels in the inverter, the output voltages have more steps generating a staircase waveform, which has a reduced harmonic distortion. Multilevel inverters include an array of controlled semiconductor devices with antiparallel diodes and capacitor voltage sources. In multilevel inverters the Neutral-Point Clamped (NPC) converter based on Multi-State Switching Cell is presented in this paper. The T-type inverter consists of two types of cells. One is full bridge switches and another one is half bridge switches. Half bridge switches are connected to that of the dc-link mid-point. These switches have to block the half of the dc-link voltage. Therefore, it is possible to use the IGBTs having a lower voltage rating. Therefore, the conduction losses of the T-type inverter are considerably reduced compared to that of the NPC inverter.

### A. The Basic Cell Generating Procedure

The cell generating procedure is as shown in figure (1.1). If we consider a two winding transformer, first the secondary side of the transformer is referred to as the primary side, second the output voltage source  $V_o$  is connected to the common point of the switches. Finally from the converter the new switching cell is obtained between the points a, b and c.

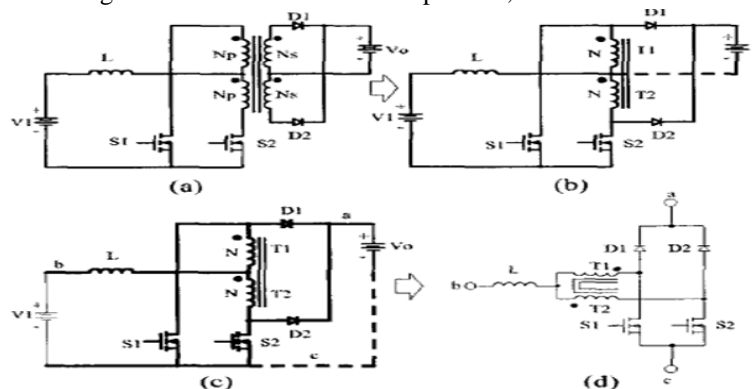


Fig (1) Procedure for generating Multi-State Switching Cell

## International Journal for Research in Applied Science & Engineering Technology (IJRASET)

In order to clarify the issues such as input ripple current, output rms current and also reduce the current stresses on semiconductor devices are performed depends on the number of switching states. A five level inverter based multi-state switching cell is applied to the T-type converter (5L T-Type-MSSC) has some advantages compared with the 5L NPC-MSSC topology : it presents less number of semiconductors, because it does not need clamping diodes, due to this reducing cost of the converter. During the operating intervals, the number of conducting semiconductors is smaller; this will represents the reduction in total losses. And also we can reduce the current stresses on semiconductor devices.

### II. FIVE-LEVEL NPC-MSSC TOPOLOGY

The five-level Neutral-Point Clamped topology based on multi-state switching cell is shown in fig (2), consists of eight controlled switches (S1-S8) with respective to the anti-parallel diodes (D1-D8); four clamping diodes (DC1-DC4) are used to clamp the output voltage. One autotransformer with windings N1 and N2 of unitary transformation ratio (1:1) is used to flow the current evenly through the semiconductor switches. One passive filter is used to reduce the high frequency component in the output voltage composed by the inductor ( $L_o$ ) and capacitor ( $C_o$ ).

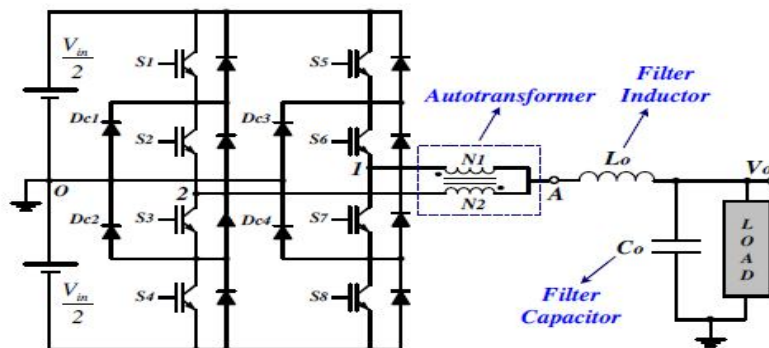


Fig (2) five-level NPC-MSSC topology

#### A. Modulation Technique

The engaged modulation technique is the sinusoidal pulse width modulation technique (SPWM), as shown in figure (3).

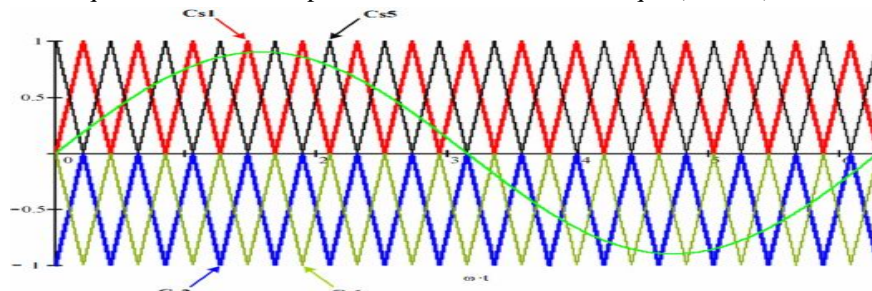


Fig (3) sinusoidal pulse width modulation technique (SPWM)

The carriers  $C_{s1}$  and  $C_{s2}$  can be arranged in vertical shifts, with the signals in phase with each other called phase disposition (PD-PWM). The carriers  $C_{s5}$  and  $C_{s6}$  are phase-shifted by the 180 degrees. The drive signals of switches  $S_1, S_2, S_5$  and  $S_6$  are obtained from the comparison of the sinusoidal reference voltage with the respective triangular carriers  $C_{s1}, C_{s2}, C_{s5}$  and  $C_{s6}$ . Thus, the drive signals of switches  $S_1$  and  $S_5$  are phase-shifted by 180 degrees and so the drive signals of switches  $S_2$  and  $S_6$ . The drive signals of switches  $S_3, S_4, S_7$  and  $S_8$  are complementary to those for switches  $S_1, S_2, S_5$  and  $S_6$  respectively. Applying this modulation technique in the five-level topologies, until the end of entire positive semi-cycle of the sinusoidal reference voltage the switches  $S_2$  and  $S_6$  are in conduction state. While the switches  $S_1$  and  $S_5$  are performs the non-conduction state for negative semi-cycle of the sinusoidal reference voltage.

#### B. Operation Modes

The NPC-MSSC topology appears two operation modes according to the states of switches such as Overlapping mode and



## International Journal for Research in Applied Science & Engineering Technology (IJRASET)

### Non-overlapping mode

The overlapping mode occurs when the switches  $S_1$  and  $S_5$  or  $S_2$  and  $S_6$  are having the continuous conduction during the positive and negative semi-cycle of the output voltage. The Non-overlapping mode occurs when the switches  $S_1$  and  $S_5$  or  $S_2$  and  $S_6$  are not having the continuous conduction during the positive and negative semi-cycle of the output voltage as shown in figure (4).

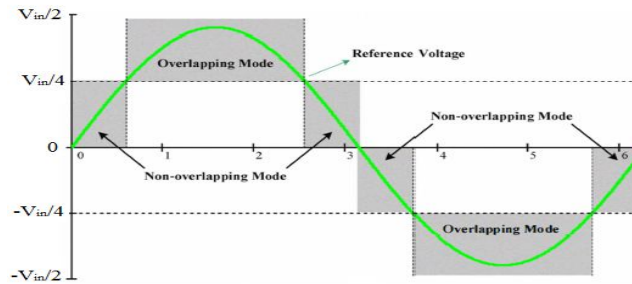


Fig (4) the inverter output voltage during one-cycle

1) *Non-Overlapping Mode In The Positive Semi-Cycle:* a) *Mode 1:* The entire positive semi-cycle of the output voltage the switches  $S_2$  and  $S_6$  are in conducting and the switches  $S_1$  and  $S_5$  are non-conduction state of operation. During this stage, half of the load current flows through diode  $D_{c1}$  switch  $S_2$ , and winding  $N_2$ . While the remaining half flows through the diode  $D_{c3}$ , switch  $S_6$ , and winding  $N_1$ . During this stage, is as shown in figure 5(a), the output voltage  $V_{AO}$  is equal to zero.

b) *Mode 2:*

When the switch  $S_1$  is off and  $S_5$  is on, half of the load current flows through the input voltage source ( $V_{in}$ ), switches  $S_5$  and  $S_6$ , winding  $N_1$ . While the remaining half flows through diode  $D_{c1}$ , switch  $S_2$ , and winding  $N_2$ . During this operation stage, is represented in figure 5(b), the output voltage  $V_{ao}$  is equal to  $+V_{in}/4$ . A similar operation stage occurs when switch  $S_1$  is on and  $S_5$  is off.

Thus the output current is equally shared between the autotransformer windings and the current stresses for the controlled switches and diodes are reduced.

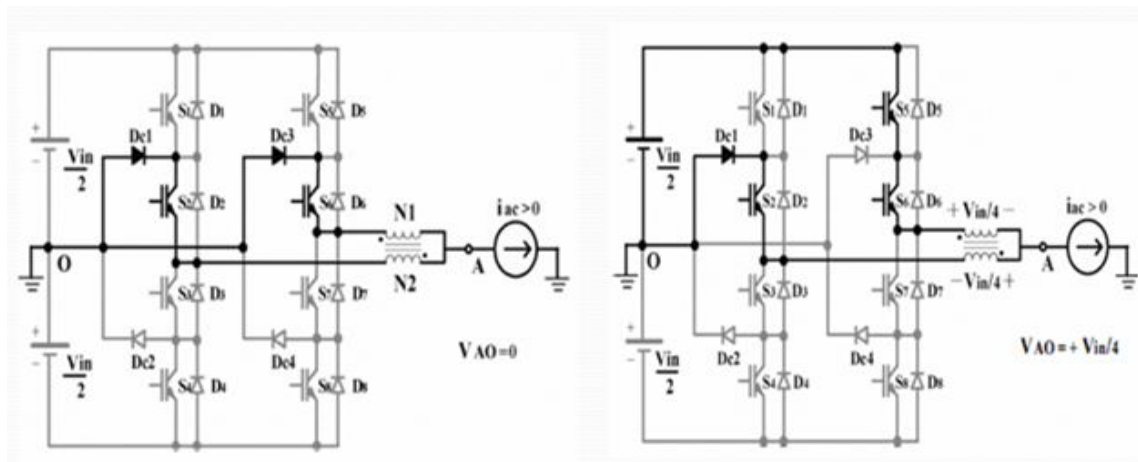


Fig 5(a)

Fig 5(b)

Fig 5 Operation stages in non-overlapping mode

2) *Overlapping Mode In Positive Semi-Cycle:* a) *Mode 1:* In this operation mode, switches  $S_2$  and  $S_6$  are always on, and also the switches  $S_1$  and  $S_5$  are on, half of the load current flows through switches  $S_1$  and  $S_2$ , and winding  $N_2$ . The remaining current flows through switches  $S_5$  and  $S_6$ , which is shown in figure 6(a), the output voltage  $V_{ao}$  is equal to  $+V_{in}/2$ .

b) *Mode 2:*

When the switch  $S_1$  is off and  $S_5$  is on, half of the load current flows through the input voltage, switch ( $S_5$ ,  $S_6$ ) and winding  $N_1$ . While the remaining half flows through diode  $D_{c1}$ , switch  $S_2$ , and winding  $N_2$ . During the operating stage represented in figure 6(b), the

## International Journal for Research in Applied Science & Engineering Technology (IJRASET)

output voltage  $V_{ao}$  is equal to  $+V_{in}/4$ . A similar operation stage occurs when switch  $S_1$  is on and  $S_5$  is off. The behaviour of the converter in overlapping modes considering the negative semi-cycle of the output voltage is analogous to that for positive one.

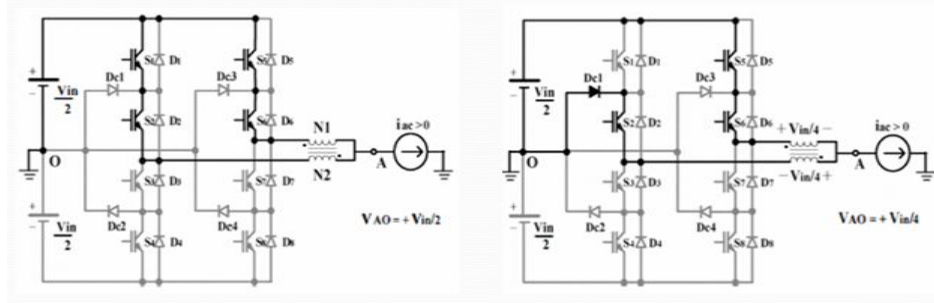


Fig 6(a)

Fig 6(b)

Fig 6 operation modes in overlapping mode

### C. Output Voltage

From the previous analysis, it is possible to conclude that the output voltage  $V_{ao}$  assumes three possible values for each semi-cycle according to the state of switches, while null voltage exists in both semi-cycles. Therefore the output voltage waveform assumes five levels.

## III. PROPOSED TOPOLOGY

The five-level T-type inverter topology based on MSSC is self-possessed by the following components are as shown in figure (7), eight controlled switches ( $S_1$ - $S_8$ ) with respective to the anti-parallel diodes ( $D_1$ - $D_8$ ); one autotransformer with windings  $N_1$  and  $N_2$  and one passive filter is used to reduce the high frequency component in the output voltage composed by inductor and capacitor. In this proposed inverter, an active bidirectional switch to the dc-link mid-point providing superior output voltage quality. Thus a third voltage level is added to the two output levels of each leg of the inverter. Consequently, the output voltage without filter presents five levels.

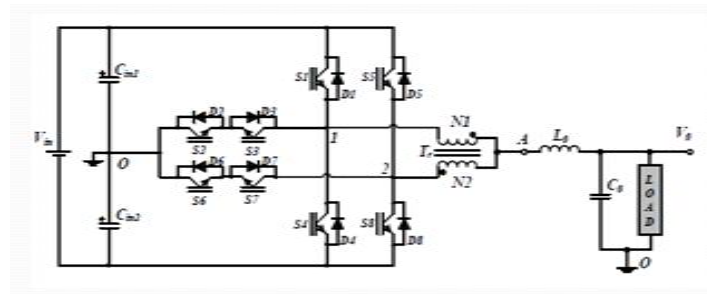


Fig (7) Five-level T-type inverter topology

The employed modulation technique is same as that of five-level NPC-MSSC topology. And also the modes of operation are same as that of NPC-MSSC topology with two operation modes according to the states of switches:

Overlapping mode

Non-overlapping mode

Positive semi-cycle (non-overlapping mode):

The time at the end of the positive semi-cycle of the sinusoidal reference voltage the switches  $S_2$  and  $S_6$  are on.

Mode 1:

The switch  $S_5$  starts conducting and  $S_1$  is switched off. Fig 8(a) shows this operating stage, where the half of the load current flows through the input voltage source, the switch  $S_5$  and winding  $N_2$ . While the remaining half flows through the intrinsic diode  $D_3$ , switch  $S_2$  and winding  $N_1$ . During this stage, the output voltage  $V_{AO}$  is equal to  $+V_{in}/4$ .

Mode 2:

The switch  $S_5$  is turned off. Thus, half of the load current flows through diode  $D_3$ , switch  $S_2$  and winding  $N_1$ . While the remaining half flows through the diode  $D_7$ , switch  $S_6$  and winding  $N_2$ . During this stage is represented by fig 8(b), the autotransformer windings are short-circuited and the output voltage  $V_{AO}$  is equal to zero.

## International Journal for Research in Applied Science & Engineering Technology (IJRASET)

Mode 3:

The switch  $S_1$  starts conducting and  $S_5$  is switched off. Fig 8(c) shows this operating stage, where the half of the load current flows through the input voltage source, the switch  $S_1$  and winding  $N_1$ . On the other hand, the remaining half of the load current flows through the diode  $D_7$ , switch  $S_6$  and winding  $N_2$ . During this stage the output voltage is equal to  $+V_{in}/4$ .

Mode 4:

This stage is identical to the second stage of the non-overlapping mode.

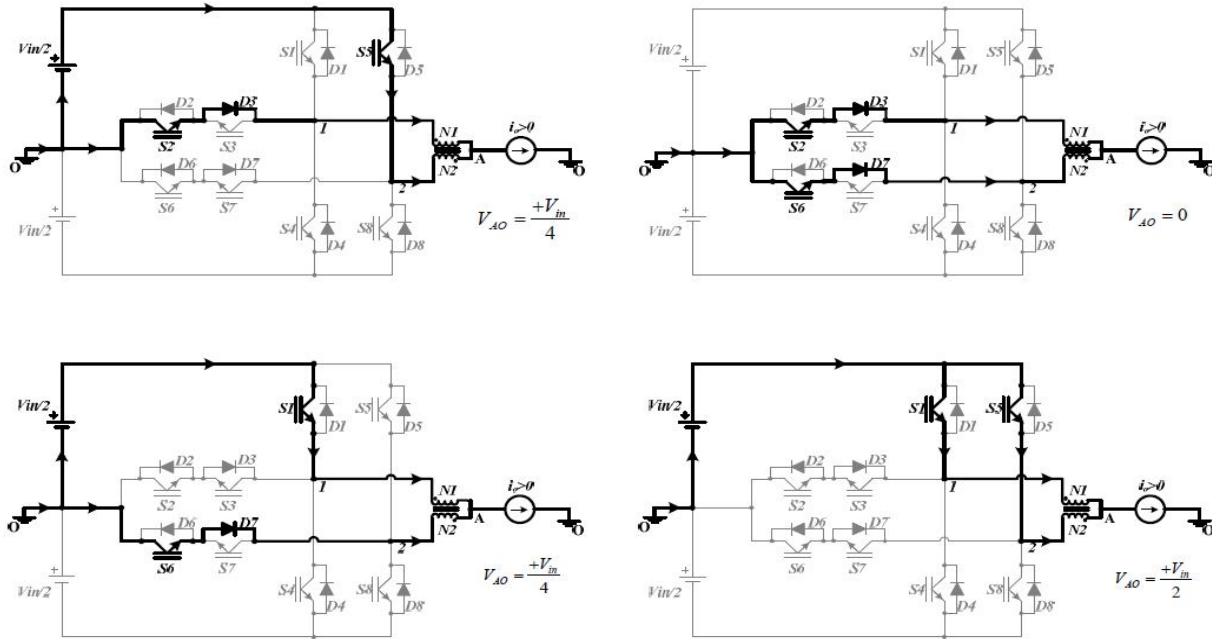


Fig (8) modes of operation for positive semi-cycle

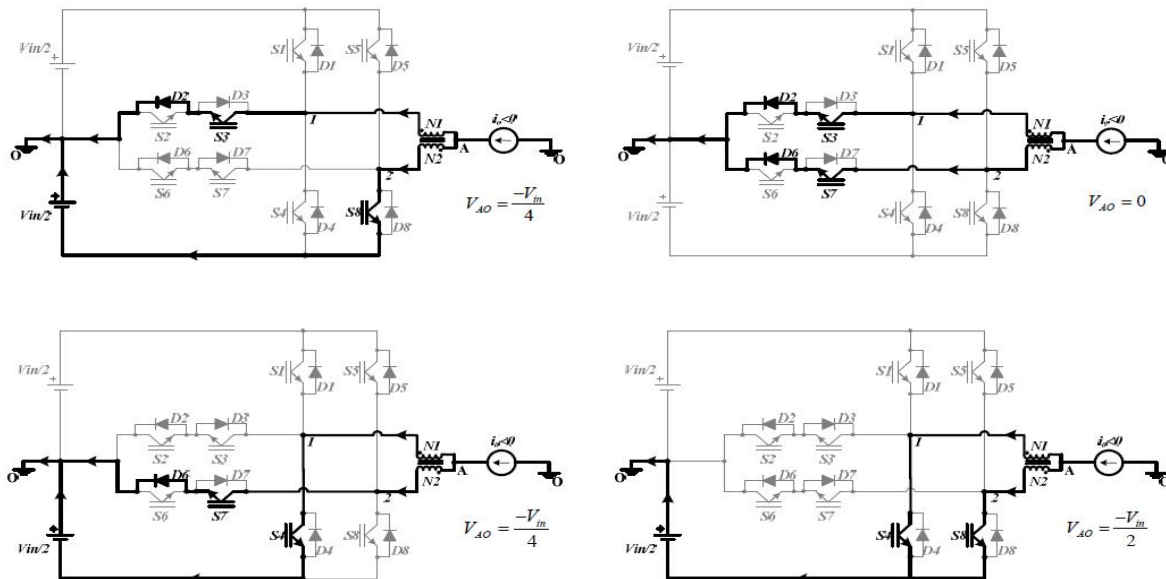


Fig (9) modes of operation for negative semi-cycle

Positive semi-cycle (overlapping mode):

Mode 1:

This stage is identical to the first stage of non-overlapping mode.

Mode 2:

## International Journal for Research in Applied Science & Engineering Technology (IJRASET)

In this mode, the switch  $S_1$  and  $S_5$  are turned on. Thus, half of the load current flows through switch  $S_1$  and winding  $N_1$ ; while the remaining half flows through switch  $S_5$  and winding  $N_2$ . During this stage, is represented in fig. 8(d), the autotransformer windings are short-circuited and the output voltage  $V_{AO}$  is equal to  $+V_{in}/2$ .

Mode 3:

This stage is identical to the third stage of the non-overlapping mode.

Mode 4:

This stage is identical to the second stage of the overlapping mode.

The five-level T-type inverter topology operating in the overlapping and non-overlapping modes considering the negative semi-cycle of the output voltage is analogous to that of previously explained for positive semi-cycle. Figure (9) shows the operating stages for overlapping and non-overlapping modes in the negative semi-cycle of the sinusoidal reference voltage.

TABLE 1: Switching states for 5LT-type MSSC

Modes of operation	S1	S5	S4	S8	$V_{AO}$
Non-overlapping Mode	Off	On	off	off	$+V_{in}/4$
	Off	Off	off	off	0
	on	Off	off	off	$+V_{in}/4$
	on	On	off	off	$+V_{in}/2$
Overlapping Mode	Off	Off	off	on	$-V_{in}/4$
	Off	Off	off	off	0
	Off	Off	On	off	$-V_{in}/4$
	Off	Off	On	on	$-V_{in}/2$

Output voltage:

The output voltage of proposed inverter  $V_{AO}$  presents three possible values for each semi-cycle, according to the conduction states of switches, and the level zero is obtained in both semi-cycles. This way the output voltage waveform presents five-levels.

### IV. COMPARISON OF TOPOLOGIES

By comparing the above two topologies, the NPC-MSSC topology, clamping diodes are used for clamp the voltage, but in T-type MSSC topology clamping diodes are necessary, due to this less semiconductors are used in T-type topology by this cost will be reduced. Same rating of IGBTs are preferred for NPC-MSSC topology, different ratings of IGBTs are used for reducing the switching losses in T-type MSSC topology. Common emitter configurations are used to form a bidirectional switch, which has to block the half of the dc-link voltage. No need of switching configurations in NPC-MSSC topology.

### V. SIMULATION RESULTS

Fig (10) (11), shows the inverter output voltage  $V_O$  and the five levels of output voltage  $V_{AO}$  for NPC-MSSC topology. The THD value of the unfiltered output voltage  $V_{AO}$  obtained in the simulation was 43.21%. Fig (13) (14), shows the inverter output voltage  $V_O$  and the five levels of output voltage  $V_{AO}$  for T-type MSSC topology. The THD value of the unfiltered output voltage  $V_{AO}$  obtained in the simulation was 38.17%. The current waveforms in the inductor  $L_O$  are as shown in fig. 11. It can be observed that the load current is divided equally between the autotransformer windings  $N_1$  and  $N_2$ .

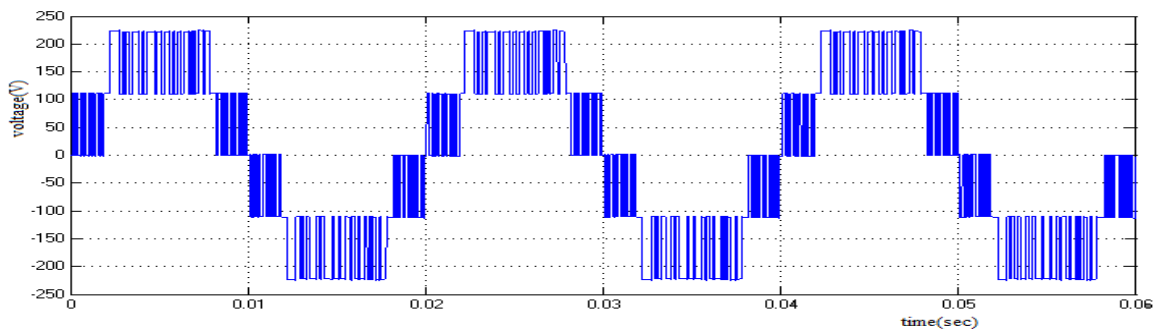


Fig. 10 output voltage for NPC-MSSC topology before filter

# International Journal for Research in Applied Science & Engineering Technology (IJRASET)

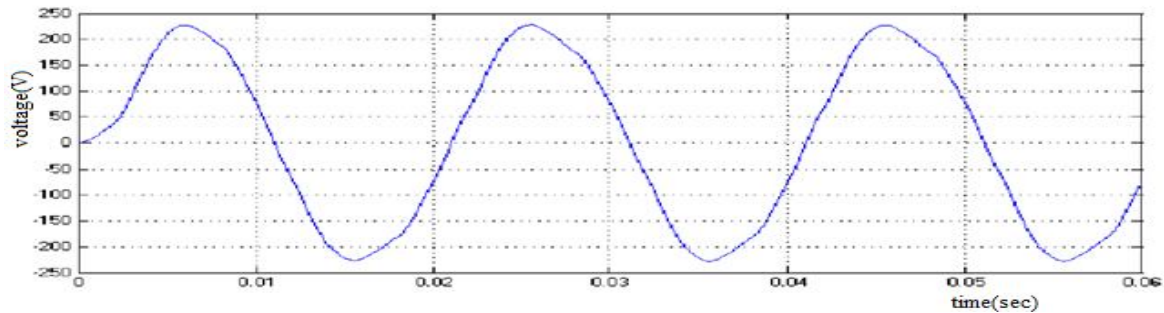


Fig. 11 output voltage for NPC-MSSC topology after filter

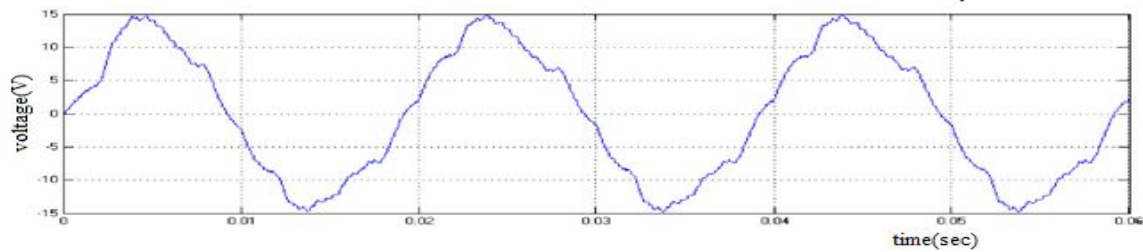


Fig. 12 inductor currents for NPC-MSSC topology

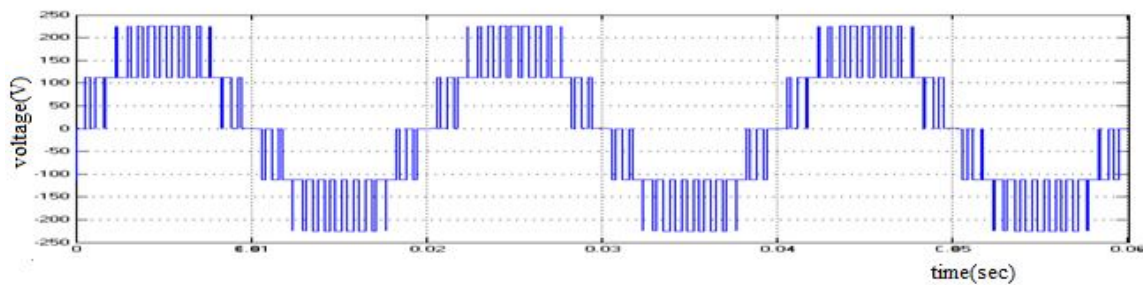


Fig. 13 output voltage for T-type MSSC topology before filter

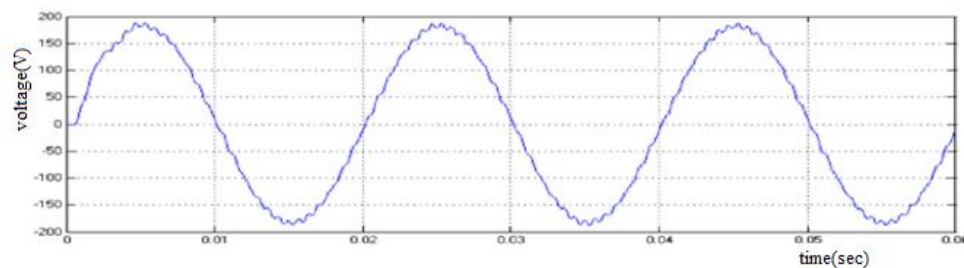


Fig. 14 output voltage for T-type MSSC topology after filter

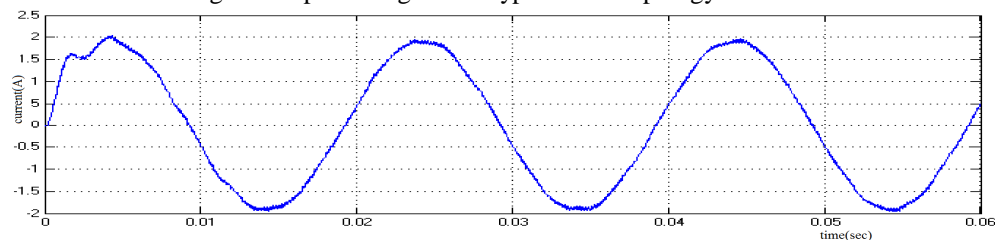


Fig. 15 inductor currents for T-type MSSC topology



# International Journal for Research in Applied Science & Engineering Technology (IJRASET)

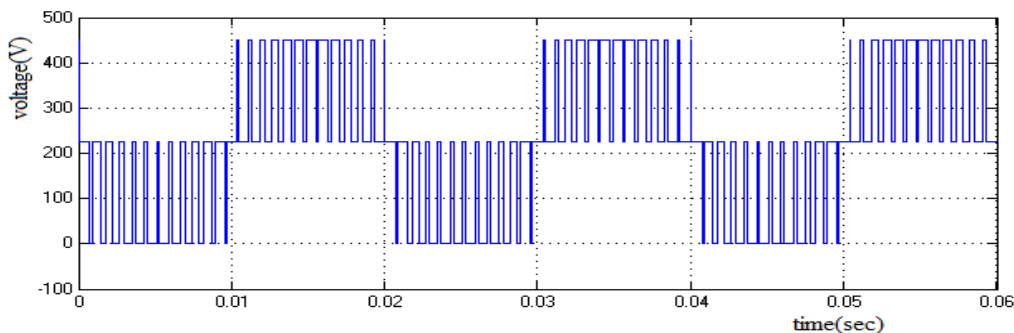


Fig. 16 voltage across full-bridge switches

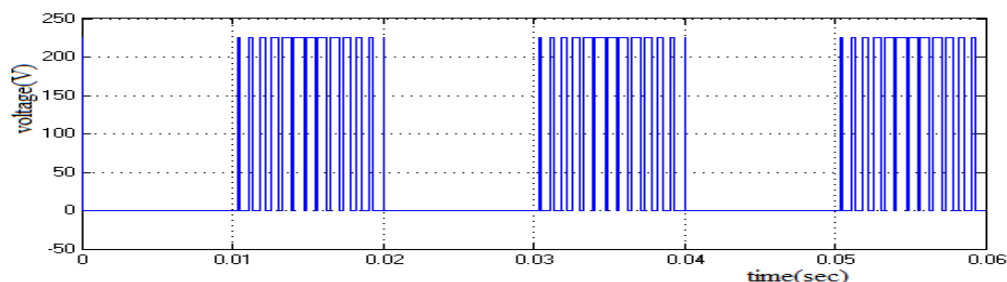


Fig. 17 voltage across half-bridge switches

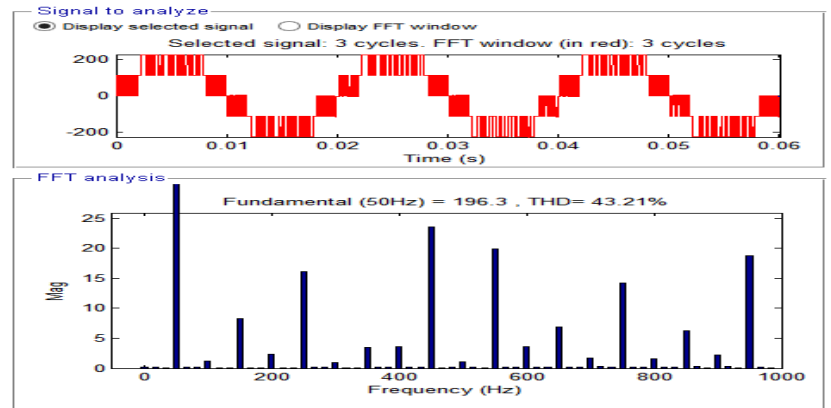


Fig. 18 FFT analysis for NPC-MSSC topology output voltage before filter

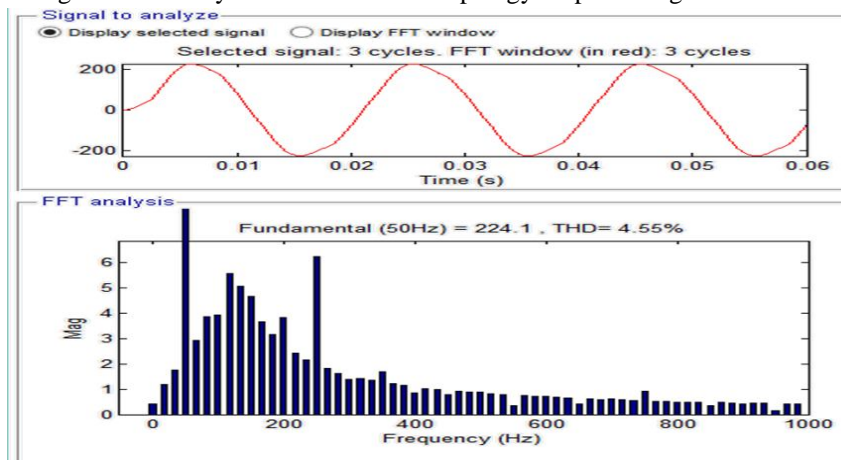


Fig.19 FFT analysis for NPC-MSSC topology output voltage after filter

# International Journal for Research in Applied Science & Engineering Technology (IJRASET)

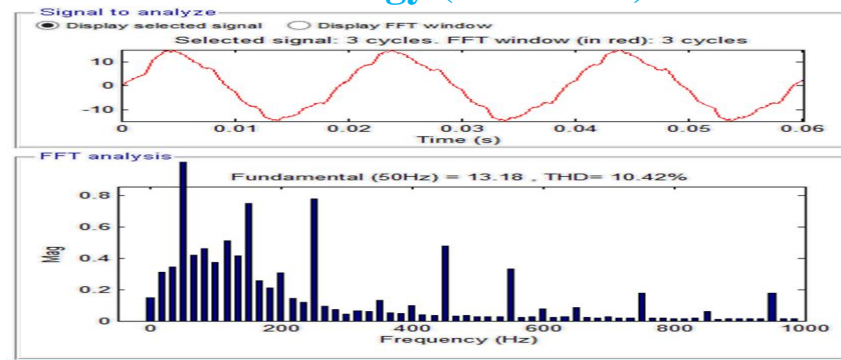


Fig. 20 FFT analysis for inductor currents of NPC-MSSC topology



Fig. 21 FFT analysis for T-type topology of output voltage before filter

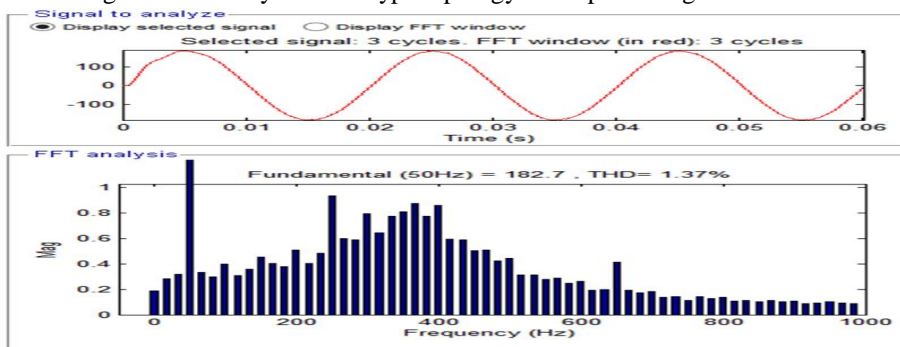


Fig. 22 FFT analysis for T-type topology of output voltage after filter

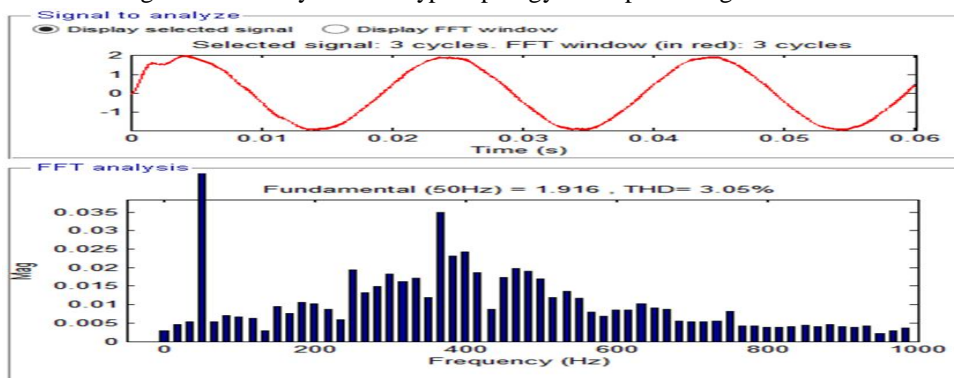


Fig. 23 FFT analysis for inductor currents of T-type topology

## International Journal for Research in Applied Science & Engineering Technology (IJRASET)

TABLE 2: Comparison table for simulation results

parameters	THD of output voltage without filter%	THD of output voltage with filter%	THD of inductor currents%
Five-level NPC- MSSC topology	43.21	4.55	10.42
Five-level T-type MSSC topology	38.17	1.37	3.05

### VI.CONCLUSION

An application of multi-state switching cell is applied to the five-level NPC-MSSC and the T-type MSSC was also present in this paper. The proposed topology presents the five levels of output voltage before the filter, and also provides lower harmonic distortion; Weight and size of the magnetic components and cost of the inverter is reduces, because low semiconductor devices are used. Additionally, the 5L T-type-MSSC presents low conduction losses due to current sharing between the semiconductor devices.

### VII. ACKNOWLEDGMENT

I would like to express thanks to my advisor J.NAGARJUNA REDDY, Asst.Prof in EEE dept. RGM CET, Nandyal, Andhra Pradesh, India for continuous encouragement throughout the work.

### REFERENCES

- [1] D. V. Ashok Kumar, et.al, "Advanced Pulse Width Modulation Techniques for Z Source Multi Level Inverter". World Academy of Science, Engineering and Technology, International Science Index 99, International Journal of Electrical, Computer, Energetic, Electronic and Communication Engineering, 9(3), 337 – 342.
- [2] J. Rodriguez, L. G. Franquelo, S. Kouro, J. I. León, R. C. Portillo, M.A. M. Prats and M. A. Pérez, "Multilevel converters: an enabling technology for high-power applications," Proceedings of the IEEE, vol. 97, no. 11, pp. 1786–1817, Nov. 2009.
- [3] A. Nabae, I. Takahashi, and H. Akagi, "A new neutral-point-clamped PWM inverter," IEEE Trans. Ind. Appl., vol. IA-17, no. 5, pp. 518–523, Sep. 1981.
- [4] T. Bruckner, S. Bernet, and H. Güldner, "The active NPC converter and its loss-balancing control," IEEE Transactions on Industrial Electronics, vol. 52, no. 3, pp. 855–868, June 2005.
- [5] F. Kieferndorf, M. Basler, L. A. Serpa, J. H. Fabian, A. Coccia and G. A. Scheuer, "ANPC-5L technology applied to medium voltage variable speed drives applications," in Power Electronics Electrical Drives Automation and Motion (SPEEDAM), International Symposium on, pp. 1718-1725, 2010.
- [6] G. V. T. Bascopé and I. Barbi, "Generation of a family of non-isolated DC-DC PWM converters using new three-state switching cells", in Proc. IEEE PESC'2000, vol. 2, pp. 858–863, June 2000.
- [7] R. A. Camara, P. P. Praça, R. P. T. Bascopé and C. M. T. Cruz, "Comparative analysis of performance for single-phase ac-dc converters using FPGA for UPS applications," in 28th Annual IEEE Applied Power Electronics Conference and Exposition (APEC), vol. 1, pp. 1852-1858, 2013.
- [8] R. Hausmann and I. Barbi, "Three-phase dc-ac converter using four-state switching cell," IEEE Transactions on Power Electronics, vol. 26, pp. 1857-1867, 2011.
- [9] R. P. T. Bascopé, J. A. F. Neto and G. V. T. Bascopé, "Multi-state commutation cells to increase current capacity of multi-level inverters," in Telecommunications Energy Conference (INTELEC), Amsterdam, Netherlands, 2011.
- [10] J. A. F. Neto, R. P. T. Bascopé, C. M. Cruz, R. G. A. Cacao and G. V. T. Bascopé, "Comparative evaluation of three single-phase NPC inverters," in Industry Applications (INDUSCON), 10th IEEE/IAS International Conference on, pp. 1-8, Fortaleza, Brazil, 2012.
- [11] M. Schweitzer and J.W. Kolar, "High efficiency drive system with 3-level T-type inverter," in Proc. 14th Eur. Conf. Power Electron. Appl., pp. 1–10, 2011.
- [12] M. Schweitzer and J. W. Kolar, "Design and implementation of a highly efficient three-level T-type converter for low-voltage applications," in Power Electronics, IEEE Transactions on, vol. 28, no 2, pp. 899-907, February 2013.



10.22214/IJRASET



45.98



IMPACT FACTOR:  
7.129



IMPACT FACTOR:  
7.429



# INTERNATIONAL JOURNAL FOR RESEARCH

IN APPLIED SCIENCE & ENGINEERING TECHNOLOGY

Call : 08813907089  (24\*7 Support on Whatsapp)