



iJRASET

International Journal For Research in
Applied Science and Engineering Technology



INTERNATIONAL JOURNAL FOR RESEARCH

IN APPLIED SCIENCE & ENGINEERING TECHNOLOGY

Volume: 4

Issue: I

Month of publication: January 2016

DOI:

www.ijraset.com

Call: ☎ 08813907089

E-mail ID: ijraset@gmail.com

Case Study for the Prediction of Effect of Aspect Ratio Five on the Heat Transfer Characteristics of Regeneratively Cooled Thrust Chamber By Considering Subcooling

Sarath Raj¹

¹Assistant Professor, Department of Mechanical Engineering.

Sree Narayana Institute of Technology, Kerala, India, Kerala Technological University, India

Abstract— In this paper, Computational Fluid Dynamics technique is used to investigate the rocket thrust chamber cooling characteristics. The scope of the investigation involves the study of effect of aspect ratio (height/width) and sub cooling on the heat transfer characteristics of coolant channel. Steady state pressure based analysis is carried out in work. The temperature distributions of coolant along the coolant channel, temperature distributions of copper and stainless steel walls are the main focus of the study. The effect of film cooling and sub cooling are also studied in the analysis. In all above mentioned cases the, the coolant(kerosene ,which is the fuel) enters at the aft end of the thrust chamber and passes through the rectangular cooling channels before it is fed to the injectors.

Keywords— Computational Fluid Dynamics, Aspect Ratio, Thrust Chamber, Rectangular Cooling Channel

I. INTRODUCTION

All rocket engines have one problem in common; high energy released by combusted gases. This problem results in high combustion temperatures in the order of 2400K to 3600 K, high heat transfer rates (0.8 to 160 MW/m^2) in thrust chamber and therefore requires special cooling techniques for the engine. Cooling techniques developed to cope with this problem, either singly or in combination, include regenerative, radiation, film cooling or transpiration cooling, ablation, and inert or endothermic heat sinks. To choose the proper cooling technique mission requirements, environmental requirements and operational requirements should be considered. Regenerative cooling is one of the most widely applied cooling techniques used in liquid propellant rocket engines.

In this paper CFD modelling and analysis is used for predicting the heat transfer characteristics, considering a rectangular channel of aspect ratio 5. Regenerative cooling of a liquid propellant rocket engine consists of a balance between the energy rejected by the combustion of gases and the heat energy absorbed by the coolant. The energy absorbed by the coolant is not wasted; it increases the initial energy content of the propellant prior to injection, increasing the exhaust velocity slightly (0.1 to 1.5%). Therefore thermal energy is recovered in the system. Basically there are three domains in a regeneratively cooled rocket engine; gas domain (combusted gases), liquid domain (coolant) and the solid domain (thrust chamber wall). Among all the different cooling systems the regenerative is the most efficient along with film cooling. In regenerative cooling, the fluid flows in cooling channels surrounding the thrust chamber; as a consequence the study of flow evolution in the channels becomes important in the case thrust chamber thermal design and for the system analysis, particularly in the case of closed-cycle turbo pump-fed engines. In the cooling channels the propellant can be either in a subcritical or supercritical state depending on its nature and on its thermodynamical state.

II. LITERATURE REVIEW

Mary F. Wadel[1] did an analytical investigation on the effect of high aspect ratio cooling channels, by considering different channel designs, on hot-gas-side wall temperature and coolant pressure drop for liquid hydrogen cooled rocket combustion chamber. Coolant channel design elements considered were; length of combustion chamber in which high aspect ratio (height/width) cooling was applied, number of coolant channels. And coolant channel shape. Daniel K. Parris and D. Brian Landrum[2] determined the flow field characteristics in a coolant channels by the use of a commercial CFD and metaphysics software developed by CFD Research Corp called CFD-ACE+. The channels are characterized by high Reynolds number, varying aspect ratio, varying curvature, asymmetric and symmetric heating. The supercritical hydrogen is used as coolant for their analysis. Micheal L. Meyer[3] conducted

International Journal for Research in Applied Science & Engineering Technology (IJRASET)

an experiment on a series of electrically heated tube to investigate the effect of high aspect ratio on the curvature heat transfer enhancement in uniformly heated rectangular cooling passages. Three hardware geometry were tested; a base line straight aspect ratio 10 tube, an aspect ratio 1(square) tube with 45o curve, and an aspect ratio 10 tube with a 45o curve. Gaseous nitrogen is used as coolant. C. L. Mercle, D. Li, and V. Sankaran[4] discussed the use of detailed CFD modelling for the description of cooling in rocket chambers. The overall analysis includes a complete three-dimensional analysis of the flow in the regeneratively cooled passages, conjugate heat transfer in the combustor wall, and the effect of film cooling on the inside chamber. Representative results for the cooling passages are presents showing the effect of heat conduction in the copper walls with tube aspect ratio of 1.5:1.

III. PROBLEM SOLVING WITH CFD

In solving fluid flow problems we must be aware that the underlying physics is complex and the results generated by a CFD code are at the best as good as the physics and chemistry embedded in it and at worst as its operator. Prior to setting up and running a simulation using CFD software there is a stage of identification and formulation of the problem in terms of its physical and chemical phenomena that need to be considered. Over 50% of time spent in industry on a CFD project is devoted for defining the domain geometry and for grid generation.

IV. COMPUTATIONAL FLUID DYNAMICS SIMULATION

The design, scalability, and running of unit operations in chemical process industries rely heavily upon empiricism and correlations of overall variables for non-ideal or non-equilibrium conditions. Many equipment designs in use are based on the past experience of experts applying rules of thumb, resembling art more than science. Processes that are sensitive to the local phenomena and the reactant concentrations are often difficult to design or scale up, because the design correlations do not take local effects into account. Non-idealities introduced by scaling up of lab or pilot scale equipment are difficult, if not impossible to predict accurately.

Researchers, equipment designers and chemical process engineers are increasingly using computational fluid dynamics (CFD) for analysing the flow and performance of process equipments, such as chemical reactors, stirred tanks, fluidized beds, cyclones, spray dryers, pipeline arrays, combustion systems, heat exchangers and other equipments. CFD allows for in depth analysis of the fluid mechanics, local effects, and chemistry in these types of equipment such as turbulence and combustion. CFD can be used when design correlations or experimental data are not available. It provides comprehensive data that are not easily obtainable from experimental tests. It highlights the root cause, not just the effect and many 'what if' scenarios can often be analysed in a short time. This method reduces scale-up problems, because the models are based on the fundamental physics and are scale-independent. CFD is basically the science of predicting heat transfer, fluid flow, chemical reactions, mass transfer and related phenomena by solving the mathematical equations that govern these processes using numerical algorithm. It is the merger of the classical branches of theoretical and experimental science, with the infusion of modern element of numerical computation. The results of CFD analyses are relevant engineering data used in conceptual studies of new designs, product development, and redesign. In many cases, CFD results in better insight, better reliability, improved performance, more confident scale-up, improved product consistency, and higher plant productivity. The progress of CFD during the last fifty years has been extraordinary. Much of this progress has been driven by the outstanding increases in digital computing speed. The continual and exponential increase in computing power, also improved the physical models in many CFD codes, and better user interfaces now enables non-experts to use CFD as a design tool on day-to-day basis. As a consequence, CFD has progressed from the domain of mainframe to the high-end engineering workstation and even to laptop PCs.

V. MODELLING

For aspect ratio 5 channel dimensions are height of the channel is 3mm, width 0.6mm and rib width is 2.3mm

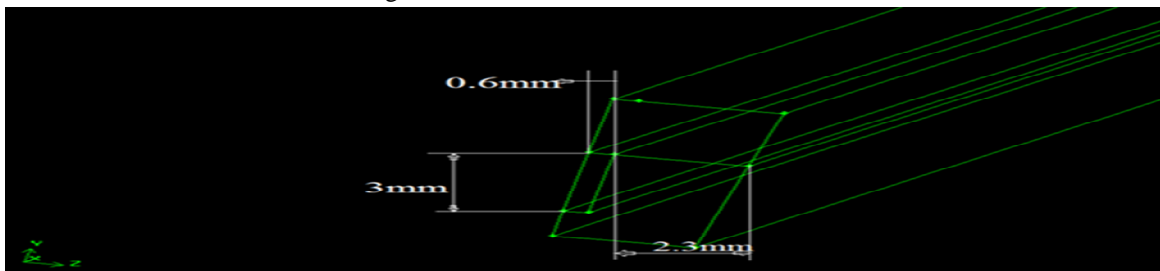


Fig 1 Channel dimensions.

International Journal for Research in Applied Science & Engineering Technology (IJRASET)

VI. GRID GENERATOR

GAMBIT 2.4.6 is used for modelling and grid generation. FLUENT 6.3.26, a pressure based segregated solver, is used for the analysis. Standard k- ϵ two-equation turbulence model is employed with standard wall functions. SIMPLE algorithm is used to get the pressure field. The computational domain consists of one fluid and two solid domains. The fluid domains include coolant (kerosene) which flows through the rectangular channels provided on the surface. The solid domains include inner copper shell and stainless steel outer covering.

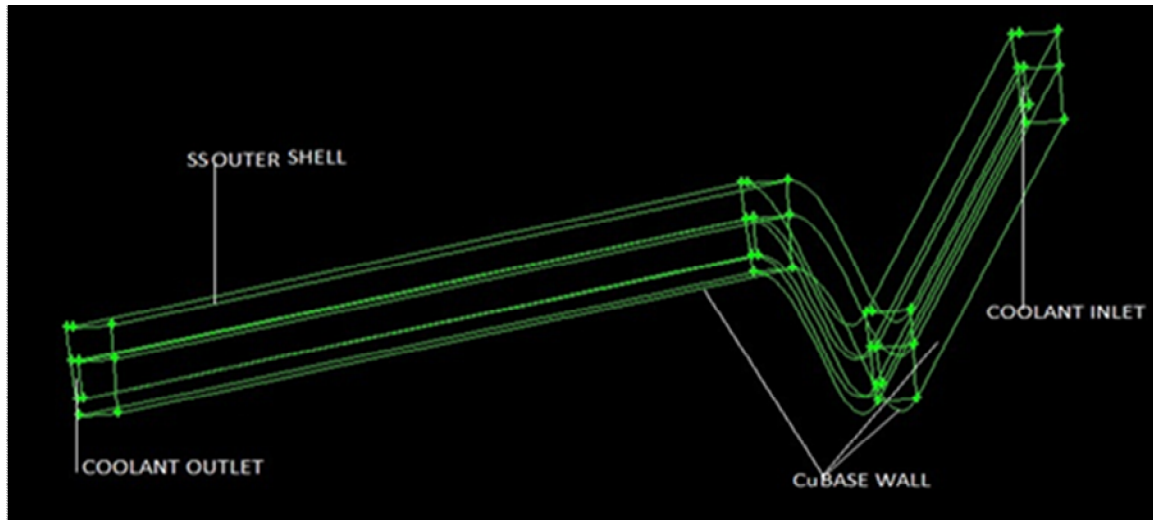


Fig 2 Selected sectors with boundary conditions

Comparatively fine structured mesh is adapted for the geometry. Tet/Hybrid elements of TGrid type is used for the volume mesh and for the entire computational domain with the aspect ratio 5 the total number of cells varies from 112800 to 200000. The grid generated is shown below.

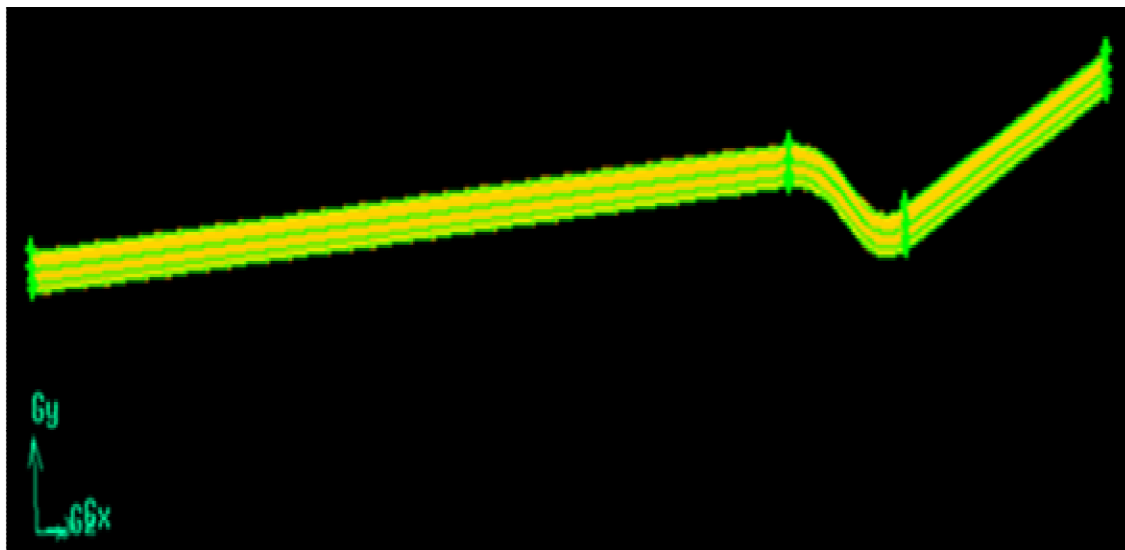


Fig 3 Grid display of the computational domain, aspect ratio 5

The total mass flow rate of the kerosene (coolant) through all the channels is 7.57 kg/s and the temperature at the inlet is 300K. Pressure outlet of 1bar is used for the outlet zone of coolant. The outermost wall of stainless steel covering is assumed to be adiabatic. The lower base copper wall is split into three sections and heat transfer coefficients at each of the section of the base wall is calculated by using Bartz Equation and CEA coding and the heat transfer coefficient thus obtained is applied on the base copper wall as boundary condition. In the case of regenerative cooling with sub cooling the inlet temperature of coolant reduces to 293K

International Journal for Research in Applied Science & Engineering Technology (IJRASET)

VII. RESULTS AND DISCUSSIONS

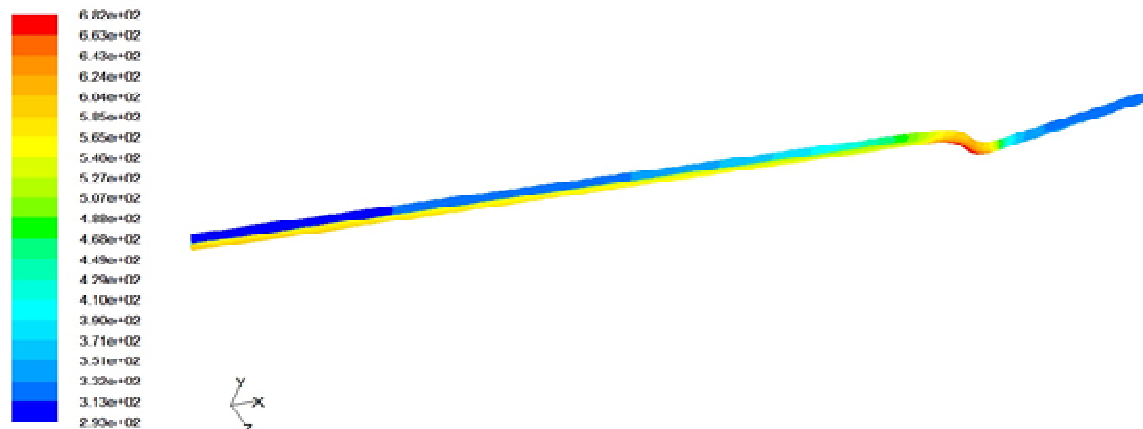


Fig.4 Three-dimensional schematic of computational domain and converged contour for total temperature for AR5 with sub cooling
Figure 4 shows that by considering sub cooling of the coolant to 293K the maximum temperature reached is 682K, ie as compared to rocket thrust chamber having regenerative cooling studies shows that the temperature can be reduced by 102K and compared to film cooling, temperature can be reduced by 3K. So by sub-cooling to both coolant outlet and coolant inner wall temperature can be reduced.



Fig.5 Temperature contour of Cu base wall

Figure 5 shows the base copper wall temperature distribution. The maximum temperature 682K observed is at the throat portion and the graph shows the temperature distribution of Cu wall along the axial position of the thrust chamber.

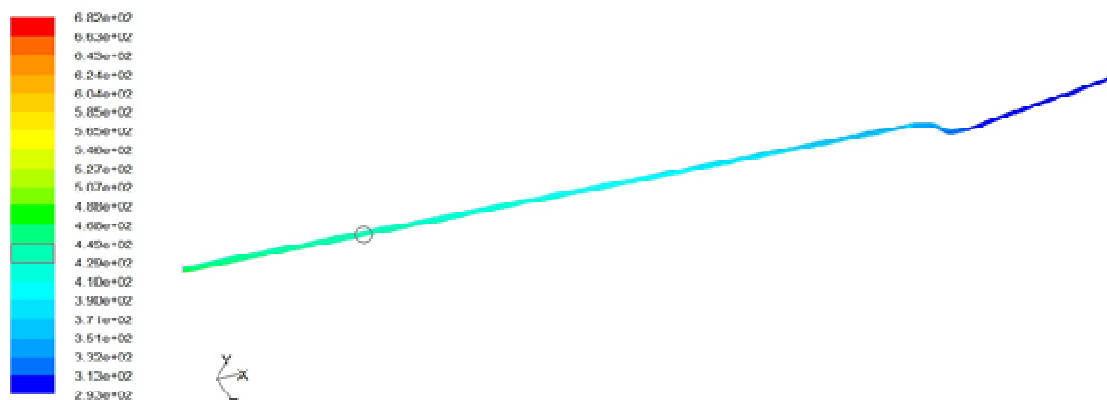


Fig.6 Contour of coolant temperature.

The above contour shows that the coolant temperature distribution along the length of the rectangular channel. Maximum

International Journal for Research in Applied Science & Engineering Technology (IJRASET)

temperature observed is 449K

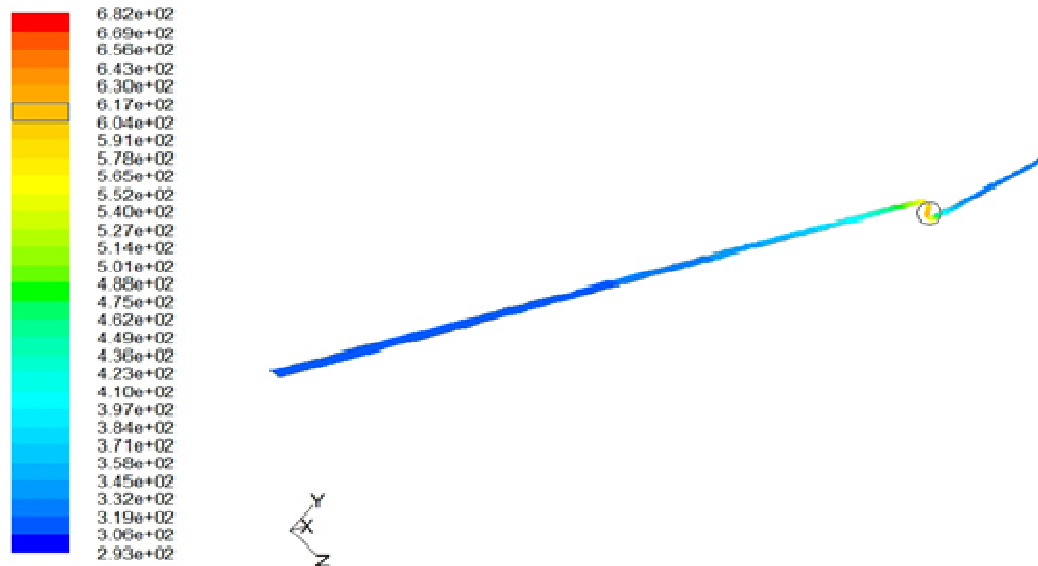


Fig.7 Contour of Stainless steel top wall

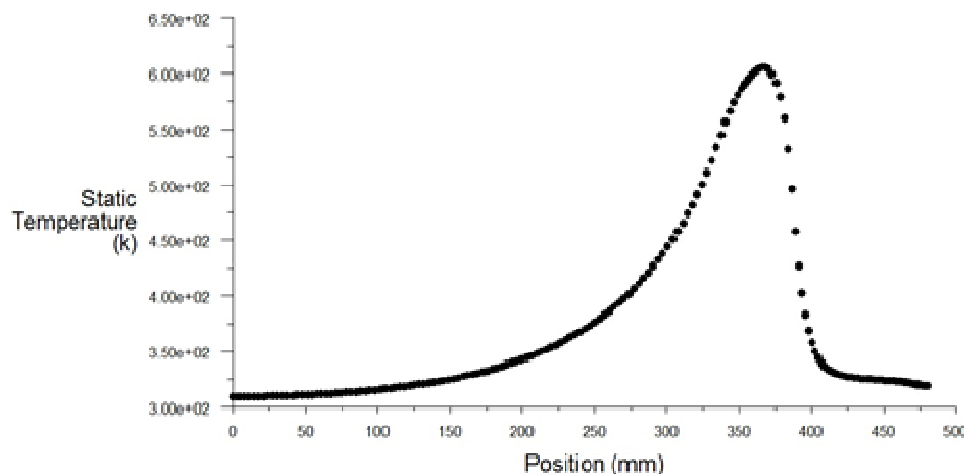


Fig.8 Temperature distribution of Stainless steel top wall.

The above contour and graph shows the temperature distribution of stainless steel when considering sub cooling and the maximum temperature obtained is 617K.

VIII. CONCLUSION

The effectiveness of regenerative cooling of thrust chamber is carried out by considering aspect ratio 5. Aspect ratio and sub cooling studies show that the wall temperatures are decreasing down into acceptable material limit at the hot gas side. Coolant temperature and coolant velocity are also shown to be in the acceptable region. The analysis shows that coolant side wall temperature tends to exceed the coking limit at the throat region. This may lead to the deposition of solid deposits within the coolant channels since kerosene, which is a hydrocarbon based fuel is used as the coolant. But by adopting sub cooling and increasing the aspect ratio of the coolant channels, reduced the coolant side wall temperature below the coking limit and hence it avoids the likelihood of coking in the coolant channel.

REFERENCES

- [1] Mary F. Wadel, "Heat Transfer in Rocket Combustion chambers", N 94-20041, SECA.Vol.2,pp 99-108.
- [2] C. L. Merkle, D. Li and V. Sankaran, "Analysis of Regen Cooling in combustion Chambers.", NASA Space Act Agreement, NCC8-200.
- [3] Daniel K.Parris and D. Brian Landrum, "Regenerative Cooling for Liquid rocket Engines", Journal of Thermal Science Vol.4, No.1, pp. 54-59.
- [4] Micheal L.Meyer, "Advanced Rocket Engines", AIAA-2004,NATO OTAN- 74239.

International Journal for Research in Applied Science & Engineering Technology (IJRASET)

IX. ACKNOWLEDGMENT

The authors thank the Managing Director Sree Narayana Institute of Technology Adoor, Kerala for giving the financial assistance and Head of the Department, Mechanical Engineering Sree Narayana Institute of Technology Adoor, for giving valuable guidance and suggestions

AUTHOR BIOGRAPHY



SARATH RAJ - Completed B Tech in Mechanical Engineering from Travancore Engineering College, Kerala and M Tech in Industrial Refrigeration and Cryogenic Engineering from Thangal Kunju Musaliar College of Engineering, Kerala. Research interests include 1. Refrigeration and Cryogenics. 2) Combustion studies in rocket fuels. 3) Cooling systems in rockets. 4) Automobile Engineering



10.22214/IJRASET



45.98



IMPACT FACTOR:
7.129



IMPACT FACTOR:
7.429



INTERNATIONAL JOURNAL FOR RESEARCH

IN APPLIED SCIENCE & ENGINEERING TECHNOLOGY

Call : 08813907089  (24*7 Support on Whatsapp)