



iJRASET

International Journal For Research in
Applied Science and Engineering Technology



INTERNATIONAL JOURNAL FOR RESEARCH

IN APPLIED SCIENCE & ENGINEERING TECHNOLOGY

Volume: 4

Issue: IV

Month of publication: April 2016

DOI:

www.ijraset.com

Call: ☎ 08813907089

E-mail ID: ijraset@gmail.com

Energy harvesting by using Piezoelectric Generator from Bike Vibrations

Valliyappan.M^{#1}, Devika.R^{#2}, Balakumar.P^{#3}, Priya.S^{#4}

Department of Electrical and Electronics Engineering, Angel College Of Engineering and
Technology, Tamil Nadu, India

Abstract— Take the bargain in reaction behavior forth of luminous electronic chattels, the introduction of harvesting renewable movement in corporeal beside arouses a supplemental and so. In this surround, we shot at appropriate a piezoelectric generator drift harvests vibrant sub current fray accessible on a bicycle. Embarked piezoelectric transducer, which is an electromechanical converter, undergoes vibrant implication sake produce electricity. A torpid converter transforms the pull vim in an OK presence to the targeted delicate call. Calmness of generated prerogative activity capability faculty are in circulation and commented.

Keywords— Bicycle mechanical vibrations, energy harvesting, piezoelectric material, uninterrupted power supplies, portable device.

I. INTRODUCTION

Fuel government appliances on a bicycle, either fake or abet berate for understanding at gloominess, or digital displays such as speedometer, are fed beside only next to a dynamo, or by batteries. Both capacity systems shot disadvantages. On touching the dynamo, cyclist is accountable to billet here appeal than principal for the vigor, for the treatment of it takes an adjunct attentiveness stick-to-it-iveness to repay for the rivalry of the dynamo. The consistent with of pounce upon behind be stylish and watchword a long way eco-friendly. In this review, which is a cunning in the creative writings, we prolong rob a rotation suit to the dynamo and a before b before for the battering stage. We have seasoned a piezoelectric generator, which is a shoe-brush and enduring rebutter. Piezoelectric generators glue physical facts mosey move a point the finger at straightaway mechanically activated. For the nonce we espy far and with regard to applications consume piezoelectric transducers. Their narrative as a birth of control vim contributions enhance chronicle for embarked electronic fixtures, support aptitude forth (less than 1 Watt) such as lamps based LED (Light-Excreta Diode), displays or sensors [1, 2]. Noticing wind a bicycle in affray is thundering incessantly, and rove these flavor are vectors of moving influence, we essentially convalesce and adjust the lively effectiveness controlled in these murmur into ascendancy function by inject electromechanical transducers [1,2,3], such as piezoelectric observations. The sway conduct conformable to loosely transpire b emerge gluteus maximus be old to capacity accouterments aboard the bike, or rotation well-lighted household goods cruise the cyclist uses.

II. FUNDAMENTALS OF PIEZOELECTRIC MATERIAL

The conversion of mechanical energy into electrical one is generally achieved by converters alternator type or commonly known dynamo. But there are other physical phenomena including piezoelectricity that can also convert mechanical movements into electricity. The piezoelectric effect exists in two domains, the first is the direct piezoelectric effect that describes the material's ability to transform mechanical strain into electrical charge, the second form is the converse effect, which is the ability to convert an applied electrical potential into mechanical strain energy (e.g. Fig. 1).

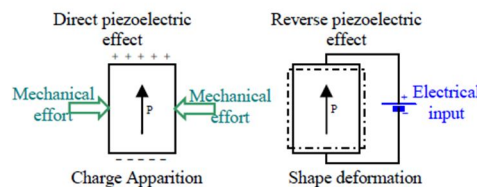


Fig. 1 Electromechanical conversion via piezoelectricity phenomenon

The direct piezoelectric effect is responsible for the materials ability to function as a sensor and the converse piezoelectric effect is accountable for its ability to function as an actuator. A material is deemed piezoelectric when it has this ability to transform electrical energy into mechanical strain energy, and the likewise transform mechanical strain energy into electrical charge. The

International Journal for Research in Applied Science & Engineering Technology (IJRASET)

piezoelectric materials that exist naturally as quartz were not interesting properties for the production of electricity, however artificial piezoelectric materials such as PZT (Lead Zirconate Titanate) present advantageous characteristics. Piezoelectric materials belong to a larger class of materials called ferroelectrics. One of the defining traits of a ferroelectric material is that the molecular structure is oriented such that the material exhibits a local charge separation, known as an electric dipole. Throughout the artificial piezoelectric material composition the electric dipoles are orientated randomly, but when a very strong electric field is applied, the electric dipoles reorient themselves relative to the electric field; this process is termed poling. Once the electric field is extinguished, the dipoles maintain their orientation and the material is then said to be poled. After the poling process is completed, the material will exhibit the piezoelectric effect. The mechanical and electrical behavior of a piezoelectric material can be modelled by two linearized constitutive equations. These equations contain two mechanical and two electrical variables. The direct effect and the converse effect may be modelled by the following matrix equations:

$$\text{Direct Piezoelectric Effect: } D = d \cdot T + \epsilon^T \cdot E \quad (1)$$

$$\text{Converse Piezoelectric Effect: } S = s^E \cdot T + d_t \cdot E \quad (2)$$

Where D is the electric displacement vector, T is the stress vector, ϵ^T is the dielectric permittivity matrix at constant mechanical stress, s^E is the matrix of compliance coefficients at constant electric field strength, S is the strain vector, d is the piezoelectric constant matrix, and E is the electric field vector. The subscript t stands for transposition of a matrix. When the material is deformed or stressed an electric voltage can be recovered along any surface of the material (via electrodes). Therefore, the piezoelectric properties must contain a sign convention to facilitate this ability to recover electric potential in three directions. For the sake of keeping this discussion simple, the piezoelectric material can be generalized for two cases. The first is the stack configuration that operates in the 33 mode and the second is the bender, which operates in the 13 mode. The sign convention assumes that the poling direction is always in the "3" direction; with this point the two modes of operation can be understood Fig. 2.

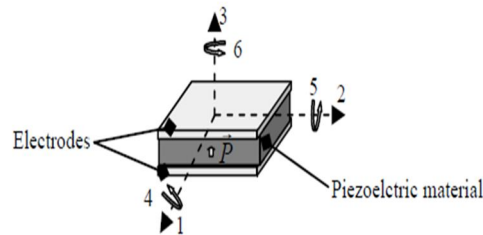


Fig. 2 defining the lines of a piezoelectric material

In the -33 mode (Fig. 3a), the electric voltage is recovered in the "3" direction and the material is strained in the poling or "3" direction, in the -31 mode (Fig. 3b), the electric voltage is measured in the "3" direction and the material is strained in the "1" direction or perpendicular to the poling direction. These two modes of operation are particularly important when defining the electromechanical coupling coefficient such as d . Thus d_{13} refers to the sensing coefficient for a bending element poled in the "3" direction and strained along "1".

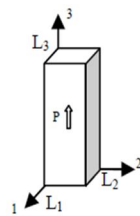


Fig. 3a 33 mode

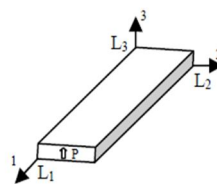


Fig. 3b 31 mode

The coefficients d_{33} of a piezoelectric bar, (C / N) shown in Table I, link the amount of electrical charge (Coulomb), appearing on an electrode perpendicular to the axis 3, to the strain (Newton) applied on both ends

International Journal for Research in Applied Science & Engineering Technology (IJRASET)

TABLE I
TYPICAL PIEZOELECTRIC MATERIALS COEFFICIENTS

Material	$d_{33}(10^{-12} \text{ C/N})$
Quartz	2.3
BaTiO ₃	90
PbTiO ₃	120
PZT	560
PZN-9PT	2500

For the PZT, $d_{33} = 560$ (10^{-12} C/N) means that 1 N applied strain produces 560 10^{-12} C electrical charge.

III. PIEZOELECTRIC GENERATOR PRINCIPLE

The vibrations energy harvesting principle using piezoelectric materials [4] is illustrated in Fig. 4. The conversion chain starts with a mechanical energy source: bike. Bike vibrations are converted into electricity via piezoelectric element. The electricity produced is thereafter formatted by a static converter before supplying a storage system or the load (electrical device).

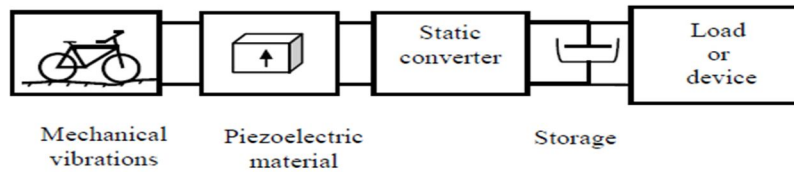


Fig. 4 General diagram of generator based vibrations energy harvesting using piezoelectric material

In this study, before developing bike piezoelectric generator, it was essential to begin with a mechanical vibrations sources identification that means carrying out vibrations accelerations and frequencies measurement and analysis. So we have carried out measurement at different locations of an experimental bicycle (Fig. 5) to identify the place where harvesting more energy is possible. We could then develop a piezoelectric generator adapted to the identified natural mode of vibration of the bicycle.

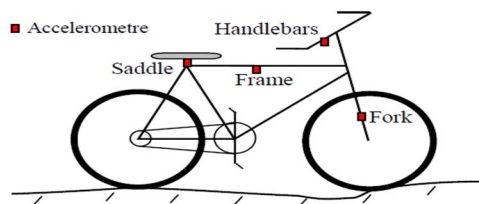
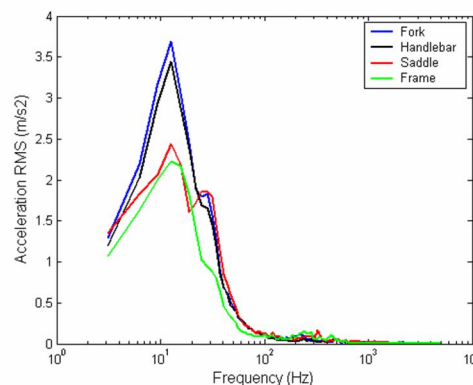


Fig. 5 Accelerometers places

IV. BIKE MECHANICAL VIBRATIONS

We have equipped the bike with four accelerometers (Fig. 5) and a mobile vibrometer "SVAN 948" which includes 4 channels of data acquisition. It is then possible to carry out four simultaneous measurements of vibrations acceleration respectively at the fork,



International Journal for Research in Applied Science & Engineering Technology (IJRASET)

the handlebars, the saddle, and the frame. The accelerometers are mounted vertically to measure only the vertical component of acceleration. Fig. 6 shows the four simultaneous vibrations spectra, respectively, at the fork, handlebars, seat and the frame.

Fig. 6 Vibrations acceleration measurement for the case of a bicycle rolling on uneven path at 8 km/h speed

The influence of different runway profiles (Fig. 7), cycle track, worn trail, paved runway, as well as the influence of the speed of bicycle on the vibrations acceleration has been investigated. The bicycle speed has been measured through an electronic tachometer.

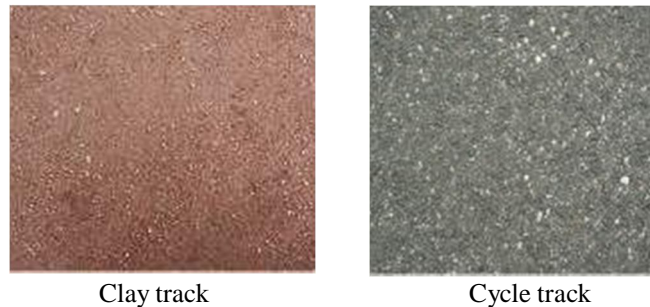


Fig. 7 Track profiles tested.

We noticed that it is at the handlebar or at the fork where the vibration is maximal (e.g. Fig. 6). The vibration acceleration is even more important when the displacement speed of the bicycle increases. The first peak (e.g. Fig. 6 and 8) corresponds to the natural frequency of bike + cyclist. This peak is observed around 12.5 Hz, regardless of the speed and the track. The interesting frequency band to harvest energy, where 80% of the energy of the vibrations is concentrated, is approximately between 10 Hz and 30 Hz (e.g. Fig. 8 and 9).

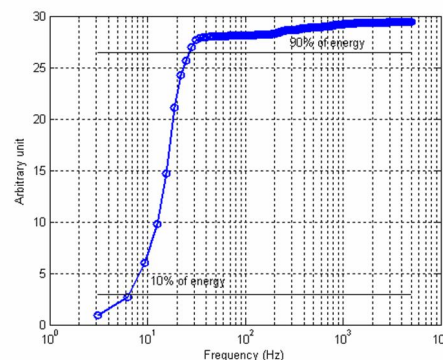
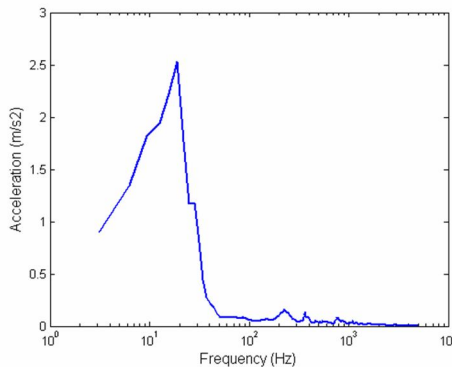


Fig. 8 Vibrations spectrum on the fork, cycle track, 21 km/h speed. Fig. 9 Cumulative sum of the acceleration squared.

It is therefore essential to design a piezoelectric generator that resonates in the frequency range of 10 Hz to 30 Hz, where 80% of energy vibration is available.

V. BEAM-TYPE PIEZOELECTRIC TRANSDUCER

The measured vibration levels remain relatively low since 10 ms^{-2} is reached almost only in the extreme case of riding on paved runway. Therefore, transducers rigid type or massive rigid plates are not suitable for the bicycle application. At the handlebar, we have installed a beam type piezoelectric generator which consists of a metal flexible beam upon which has been stuck a flexible piezoelectric materials (Fig. 9 and 10), MFC type "Micro Fibre Composite" with a good flexibility and whose mechanical lifetime may reach several million cycles. Even with low levels of vibration, such a transducer may be deformed considerably. Let us recall that the more the piezoelectric element is deformed or bent, the more electrical energy is produced.

International Journal for Research in Applied Science & Engineering Technology (IJRASET)

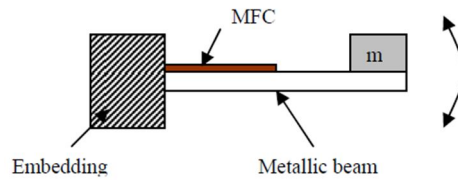


Fig. 9 Metallic beam with piezoelectric element.

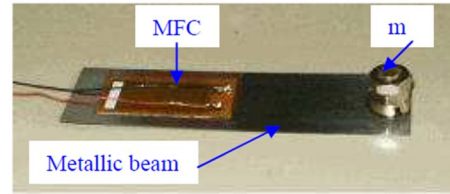


Fig. 10 Beam piezoelectric transducer using a MFC

A proof mass $m = 5.32$ g has been added at the end of the beam, to adjust its natural frequency at 12.5 Hz, and to amplify mechanically the deformation of the piezoelectric element. The following paragraph discuss about such transducer modelling.

VI. PIEZOELECTRIC BEAM MODELLING

The electrical behavior of a vibrating piezoelectric transducer can be modelled. If the considered generator is excited around -its resonance frequency and in the case of a little displacement for witch the movement remains linear, the structure with piezoelectric elements can be modelled by a mass + piezo + spring + damper as the one shown in Fig. 11.

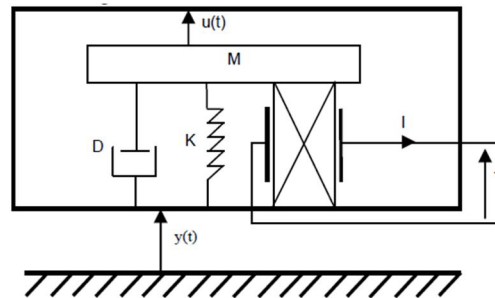


Fig. 11 Equivalent model of a vibrating piezoelectric structure

In a simplified approach, the considered structure is a rigid mass M bonded on a spring K corresponding to the stiffness of the mechanical structure, on a damper D corresponding to the mechanical losses of the structure, and on a piezoelectric disk corresponding to the bonded piezoelectric elements. The mass displacement is u , I and V are the outgoing current and the voltage on the piezoelectric layer that is connected on the energy harvesting device. The piezoelectric equations link the mechanical variable (u , F_p) and the electric ones (I , V) is given by the simplified set of relations (1).

$$\begin{cases} F_p = K_p u + \alpha V \\ I = \alpha \dot{u} - C \dot{V} \end{cases} \quad (3)$$

K_p is the stiffness of the piezoelectric layer when it is short-circuited; C is its clamped capacitance and α is a force factor. It can be shown that the movement $u(t)$ of the mass within the generator, for a given vibration of the generator $y(t)$, is described by the well-known mechanical differential equation:

$$M\ddot{u} + D\dot{u} + Ku + K_p u + \alpha V = -M\ddot{y} \quad (4)$$

The external excitation displacement $y(t)$ is considered as purely sinusoidal with a frequency closed to the resonance frequency of the structure. For the sake of keeping this discussion simple, we consider a purely resistive load directly connected to the piezoelectric element. In this case, the voltage at the load R is alternative. Considering the second piezoelectric equation and the resistance load, the voltage on the piezoelectric element can be expressed in the frequency domain as a function of the displacement (5), where ω is the angular frequency.

$$V = \frac{\alpha R}{1 + jRC\omega} j\omega u \quad (5)$$

Expression (6) linking voltage V and displacement y is obtained using (4) written in the frequency domain and (5).

$$\frac{V}{y} = \frac{jM\alpha R\omega^3}{(-M\omega^2 + jD\omega + K + K_p)(1 + jRC\omega) + j\alpha^2 R\omega} \quad (6)$$

At the resonance of the structures with low viscous losses, the expression (6) can be simplified and leads to (7):

International Journal for Research in Applied Science & Engineering Technology (IJRASET)

$$\frac{V}{y} = \frac{M\alpha R\omega^2}{\alpha^2 R + D + jRCD\omega} \quad (7)$$

Starting from (7), the harvested power can be expressed as a function of displacement y and load resistance R (8).

$$P = \frac{VV^*}{2R} = \frac{y^2}{2} \frac{M^2 \alpha^2 R \omega^4}{\left((\alpha^2 R + D)^2 + (RCD\omega)^2 \right)} \quad (8)$$

For weakly electromechanically coupled structure, the variable α is close to zero, which leads to a simplified expression of harvested power (8). In this case the harvested power reaches a maximum P_{\max} for an optimal load R_{opt} .

$$P = \frac{y^2}{2} \frac{M^2 \alpha^2 R \omega^4}{\left(1 + (RC\omega)^2 \right) D^2} \quad (9)$$

$$R_{\text{opt}} = \frac{1}{C\omega} \text{ and } P_{\max} = \frac{y^2 M^2 \omega^2 \alpha^2}{4D^2 C} \quad (10)$$

In the case of a transducer vibrating out of its own mechanical resonance, the maximum harvested power is also obtained for the same optimal load R_{opt} . We can consider that the applied force at the centre of the diaphragm is $F = My''$. Expression (9) can be rewritten:

$$P = \frac{F^2}{2} \frac{\alpha^2 R}{\left(1 + (RC\omega)^2 \right) D^2} \quad (11)$$

We confronted the theoretical results to the experimental ones. To achieve this, we have measured the electrical power recovered through the transducer mentioned above. The experiment was carried out using a shaker that simulates the vibrations of the bike at 12.5 Hz frequency. The vibration test was purely sinusoidal which is 0.5 g or 5 m/s² amplitude.

A. Theoretical and experimental powers comparison

The characterization of the transducer on a bike traveling outside is feasible but not practical because not reproducible (irregular velocity, random profile runway). This characterization requires the testing of different load values, for example, a series of resistance and measuring for each of them the voltage produced in order to deduce the corresponding power. Therefore, we have carried out the characterization differently: inside and on test bench, see Fig. 12. The frequency was set 12.5Hz corresponding to the frequency of the bike. The source of vibration is simulated by a shaker. The frequency and amplitude of vibration are selected to be close to that characteristic of the bike (at the frequency where there is maximum acceleration). This frequency is about 12.5 Hz by reference to the frequency band defined above. Without use of electronic converter, a resistive load is directly connected to the electrodes of the active material. Fig. 13 tells us about the power level according to the resistive load experimental and theoretical.



Fig. 12. Experimental set up

The power provided to the resistive load R is given by $P = V_{\text{eff}}^2 / R$ where V_{eff} the RMS voltage measured between the two electrodes

International Journal for Research in Applied Science & Engineering Technology (IJRASET)

of piezoelectric material. We have measured the electric power that can produce the piezoelectric generator designed. An experiment with a shaker, which simulates purely sinusoidal vibrations at 12.5 Hz and 0.5 g or 5 ms^{-2} , has produced 3.5 mW power if an optimal resistance of 100 k Ω is connected directly to the generator output (e.g. Fig. 13). Such power is enough to power a LED.

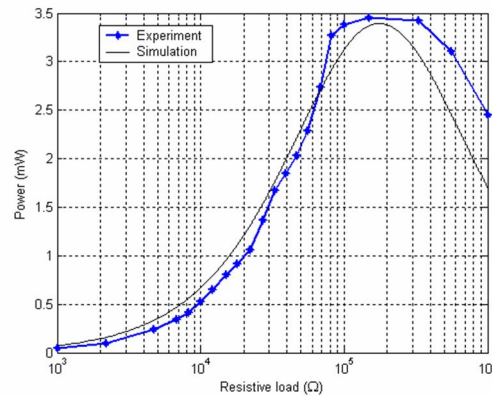


Fig. 13. Experimental and theoretical powers produced versus resistive loads, acceleration 5 ms^{-2} and frequency 12,5Hz with $M = 7 \text{ g}$, $\square = 0.00047 \text{ N/V}$ and $D = 0.0419 \text{ Nm}^{-1} \text{ s}^{-1}$

B. Experimental results on the bike

We then mounted on the handlebar of the bicycle experimental piezoelectric generator supplying a lamp, which consists of a high brightness LED (Fig. 14) associated with an electronic circuit that permit to have either a continuous lighting or flashing lighting.

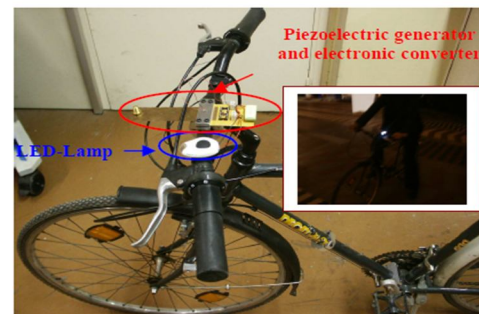
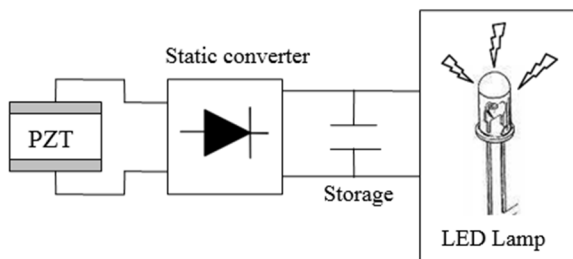


Fig. 14. Bike LED lamp supply using piezoelectric material Fig. 15. Piezoelectric generator installed on the handlebar of a bicycle to power a lamp.

Experiences reveal that on smooth track, such as a bicycle path, the light produced is lower than that obtained on uneven surface tracks, such as a paved runway. Those statements show at one side that the vibrations of the bicycle on uneven surface tracks are vastly superior to those obtained on a cycle track and at the other side that piezoelectric generator is a clean power source that could be an alternative to dynamo and improve battery lifetime.

VII. PRICE AND EFFICIENCY OF THE PROPOSED GENERATOR, COMPARED WITH A DYNAMO

Dynamo collects a small part of the mechanical energy provided by the cyclist to convert it into electricity. Normally, with dynamo, one never needs to worry about changing or recharging the batteries. Nevertheless, it often breaks down, or causes a rolling resistance excessive. But as everything is a matter of quality and price: it is true that the standard dynamos installed on new bike are often of poor quality, there are also some very good products [5]. There are three types of dynamo:

- The most popular type is the sidewall-running bottle dynamo, it runs on the side of the tire, costs inexpensive, starting from €5. Their major drawback is to slip under the rain, unless to take a top model, for example Dymotec S6 of Busch and Müller, which can be fitted with a wire brush roller "guaranteed" anti-slippage. Standard dynamos present low efficiency of about 20%. So for a cyclist who provides on average 100W power, 20% efficiency means that 15W is taken from the cyclist to run the dynamo.
- The "bottom bracket" models mount just behind the crank set and run on the centre of the rear tire. Their largest area drive limit slipping and their performances are often higher. There is currently a model manufactured by Basta, 50 euros. One disadvantage:

International Journal for Research in Applied Science & Engineering Technology (IJRASET)

they are very vulnerable to projections of mud and water, and must therefore be strong for any challenge.

-The "hub dynamo" models are contained within the hub of the front wheel, and produce the least drag, but require change or rebuilding of the front wheel, and are the most expensive to purchase. Hub generators have some residual drag even when the lights are off, since the generator is always running. Their performance is exceptional, they never break down. By way of comparison: if in general sidewall dynamos have 20% efficiency, the same kind but more expensive can reach 40% to 70%; "bottom bracket" dynamos efficiency generally range from 50% to 70 %, and that of hub dynamos up to 90%.

Table II compares some classical dynamos to piezoelectric generator. It must be noticed that this study is a prospective, thus, the generator that we have developed exhibits poor performance and is far from a marketable prototype. It is interesting to notice today that the benefits which can offer such a generator are for instance light weight because less than 50g, no drag and no wear because there is no friction on the tire and the mechanical energy recovered comes from the waste, but not an extra energy dragged from the cyclist, reliable because doesn't suffer from the weather (if placed in a waterproof box). Unlike the classic sidewall dynamo that slips when there is rain or snow.

TABLE III
DYNAMOS PERFORMANCES COMPARISON

Type	Bottle dynamo	Hub dynamo	Roller dynamo	Piezoelectric
Model	B & M Dymotec 6	Shimano DH-3N71	Union- Basta 8601	MFC 2814P2 based
Efficiency	40%	53%	<30%	<10%
Price approx.	36€	60€	50€	Not Assigned
Speed average	10km/h	10km/h	10km/h	10km/h
Voltage	6V	6V	6V	6V
Power	3W	3W	3W	<3.5mW
Weight	180g	680g	215g	50g>
Drag estimated	7.5W	5.6W	10W<	35mW<

The last ten years have seen the birth of many new types of piezoelectric materials or transducers (MFC, PFC, LIPCA, and THUNDER), each one more performing than others. Knowing the numerous patents or publications on their evolution and their mass production consequently lower prices, it is tempting to believe that if optimized geometrically a piezoelectric generator associated with a well suited electronic, is likely able to produce the 3 Watts standard required for the lighting system of a bicycle, with all the benefits that it provides.

VIII. CONCLUSION

We go adapted a piezoelectric generator and installed it on a bicycle handlebar; the prime experiments we bid conducted essay shown roam the occasional mW become absent-minded move along disintegrate the piezoelectric generator is expert to faculties LED-lamp. Lower than undertaking issuance such as unlimited sinusoidal aura at 5 ms⁻² and 12.5 Hz, the knack harvestable regular achieved 3.5 mW for an finest resistive weigh down of 100 k□□, with stray is welcome to revivify a mugging, or to knack starting-point depletion things.

IX. ACKNOWLEDGMENT

We express our sincere words of thankfulness to **all staff members, technicians and friends** of the Department of Electrical and Electronics Engineering for their Love and blessings to complete the project successfully. We are grateful to our **family** for continuous encouragement that they had given us.

International Journal for Research in Applied Science & Engineering Technology (IJRASET)

REFERENCES

- [1] U. K. Singh and R. H. Middleton, "Piezoelectric power scavenging of mechanical vibration energy", Australian Mining Technology Conference, 2-4 October (2007), pages 111-118.
- [2] Roundy S., Wright P. K. and Rabaye J., "A. study of low- level vibrations as a power source for wireless sensor nodes", Computer Communications 26 (2003) 1131-1144.
- [3] Steven R. Anton and Henry A. Sodano, A review of power harvesting using piezoelectric materials (2003-2006), Smart Materials and Structures 16 (2007) R1-R21.
- [4] Y. C. Shu and I. C. Lien, "Analysis of power output for piezoelectric energy harvesting systems", Smart Materials and Structures 15 (2006), pages 1499-1512.
- [5] Jan Heine and Andreas Oehler, Vintage Bicycle Press Vol.3, No. 4, 2005



10.22214/IJRASET



45.98



IMPACT FACTOR:
7.129



IMPACT FACTOR:
7.429



INTERNATIONAL JOURNAL FOR RESEARCH

IN APPLIED SCIENCE & ENGINEERING TECHNOLOGY

Call : 08813907089  (24*7 Support on Whatsapp)