



iJRASET

International Journal For Research in
Applied Science and Engineering Technology



INTERNATIONAL JOURNAL FOR RESEARCH

IN APPLIED SCIENCE & ENGINEERING TECHNOLOGY

Volume: 4

Issue: IV

Month of publication: April 2016

DOI:

www.ijraset.com

Call: ☎ 08813907089

E-mail ID: ijraset@gmail.com

Study of Seismic Behavior of Retaining Walls - A Review

Pratyush¹, Sana Zafar²

¹P.G. Student, ²Assistant Professor, Department of Civil Engineering,
MMM University of Technology, Gorakhpur, Uttar Pradesh, India

Abstract-Safe and efficient design of retaining wall requires knowledge of active and passive earth pressure. For the earthquake effects the proper attention to reduce the destruction. The pseudo-static analysis for retaining wall provides an approximate result. Pseudo-dynamic method provides a better picture for the design. This method considers the dynamic effect with time and phase difference including the seismic wave velocities. This study compares both the method for design of retaining wall.

Keywords- Pseudo dynamic, Phase difference, Mononobe okabe method, Retaining wall, Earth pressure.

I. INTRODUCTION

Various structure are used to retain the soil such as rigid masonry wall, flexible retaining wall cantilever sheet piles etc. Such structure are subjected to the static as well as dynamic lateral earth pressures. Calculation of seismic earth pressure is necessary for the safe design of the retaining wall in the earthquake zones. Pseudo-static method for the estimation of seismic earth pressure on retaining wall was firstly performed by Okabe(1926) and Mononobe and Matsuo(1929) known as Mononobe-Okabe method. This method provides an linear earth pressure distribution in an approximate manner. Pseudo-dynamic method includes the effects of phase difference on the wall. This method is a time dependent method. Zeng and Steedman shown the result of centrifuge modeling which was in agreement with the pseudo-dynamic method analysis.

Dewikar and Halkude (2002) provided pseudo-static numerical analysis for seismic and passive thrust on retaining wall with the help of Kotters equation.

Kumar & Chitikela (2002) proposed the seismic passive earth pressure coefficients with the help of method of characteristics. Madhav & Kameswara Rao (1969); Choudhury & Nimbalkar (2002); Choudhury (2004); Subba Rao & Choudhury (2005) with the help of limit equilibrium approach determined individually the seismic passive earth pressure coefficients corresponding to unit weight, surcharge and cohesion components. Chaudhary and Nimbalkar (2006) developed an equation considering both horizontal and vertical seismic acceleration, which showed the effect of acceleration on seismic earth pressure on retaining wall. The parameters such like wall friction angle (δ), soil friction angle (ϕ), shear wave velocity (V_s), primary wave velocity (V_p) and both the horizontal and vertical seismic coefficients (k_h and k_v) effect on the seismic active earth pressure are also studied. Vertically propagating primary and shear waves in backfill produces vibrations in vertical as well as horizontal directions. These vibrations correspond to time dependent seismic inertia forces.

Greco (2010) computed seismic active earth pressure coefficient. Greco (2010) represented two mathematical equation for the system, one of which the first cubic and the second quadratic, where solution converges quickly.

This method has not included the effect of the rayleigh waves on the seismic behavior of the retaining wall. Rayleigh wave, it constitutes about 67 % of the total seismic energy. Deepankar Choudhury, Amey Deepak Katdare, Anindya Pain (2013) incorporated the effect of rayleigh waves on the seismic behavior of the retaining wall.

II. MONONOBE OKABE METHOD

First method for the determination of the combined static and dynamic earth pressure on retaining wall was proposed by Okabe (1926) and Mononobe and Matsuo(1929). Method is based on the plasticity theory and this method is extended version of Coulomb sliding wedge theory in which earthquake forces are represented by equivalent static force. The method was developed for the dry cohesionless soil.

©IJRASET: All Rights are Reserved

International Journal for Research in Applied Science & Engineering Technology (IJRASET)

.Lateral shaking period $T = \frac{2\pi}{\omega}$ and ω is angular frequency. Base of the wall is subjected to harmonic horizontal seismic acceleration, $a_h (= k_h g)$ and harmonic vertical seismic acceleration $a_v (= K_v G)$. Acceleration at any depth z and time t below the top of wall is expressed as

$$a_h(z, t) = a_h \sin \omega \left[t - \frac{H-z}{V_s} \right] \quad (\text{vi})$$

$$a_v(z, t) = a_v \sin \omega \left[t - \frac{H-z}{V_p} \right] \quad (\text{vii})$$

Horizontal and vertical seismic acceleration are dependent on time and phase difference in the primary and shear waves propagating vertically through the backfill.

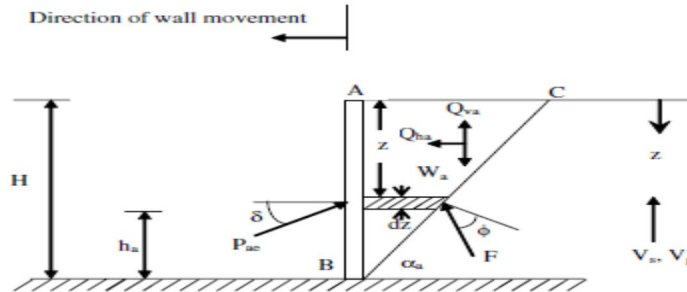


Figure 1. Model retaining wall considered for computation of pseudo-dynamic active earth pressure (Choudhury & Nimbalkar 2006).

V. SEISMIC ACTIVE EARTH PRESSURE

A planar failure surface BC at an inclination of α_a with respect to horizontal is considered in the analysis.

W_a is the weight of the failure wedge,

Q_{ha} and Q_{va} are the horizontal and vertical seismic inertia force components,

The mass of a thin element of wedge at depth z is

$$m_a(z) = \frac{\gamma H - z}{g \tan \alpha} dz \quad (\text{viii})$$

where, γ is the unit weight of the backfill.

The weight of the wedge is,

$$W_a = \frac{1}{2} \frac{\gamma H^2}{\tan \alpha_a} \quad (\text{ix})$$

The total horizontal inertia force on the wall

$$Q_{ha}(t) = \int_0^H m_a(z) \cdot a_h(z, t) dz = \frac{\lambda \gamma a_h}{4\pi^2 g \tan \alpha_a} [2\pi H \cos \omega \zeta + \lambda (\sin \omega \zeta - \sin \omega t)] \quad (\text{x})$$

total vertical inertia force acting on the wall can be expressed as

$$Q_{va}(t) = \int_0^H m_a(z) \cdot a_v(z, t) dz = \frac{\eta \gamma a_v}{4\pi^2 g \tan \alpha_a} [2\pi H \cos \omega \psi + \lambda (\sin \omega \psi - \sin \omega t)] \quad (\text{xi})$$

$\lambda = TV_s$ is the wavelength of the vertically propagating shear wave

$\eta = TV_p$, is the Wave length of the vertically propagating primary wave

$\zeta = t - H/V_s$

$\psi = t - H/V_p$.

International Journal for Research in Applied Science & Engineering Technology (IJRASET)

As the horizontal acceleration is acting from left to right and vice-versa and the vertical acceleration is acting from top to bottom and vice-versa, only the critical directions of $Q_{hs}(t)$ and $Q_{vs}(t)$ are considered to result the maximum seismic active earth pressure. The total (static + seismic) active thrust, P_{ae} can be obtained by resolving the forces on the wedge and considering the equilibrium of the forces and hence P_{ae} can be expressed as follows,

$$P_{ae} = \frac{W_a \sin(\alpha_a - \phi) + Q_{ha} \cos(\alpha_a - \phi) + Q_{va} \sin(\alpha_a - \phi)}{\cos(\delta + \phi - \alpha_a)} \quad (xii)$$

where, W_a = Weight of the failure wedge in active case α_a = Angle of inclination of the failure surface with the horizontal in active case Q_{ha} = horizontal inertia force due to seismic accelerations respectively in active case Q_{va} = vertical inertia force due to seismic accelerations respectively in active case P_{ae} is maximized with respect to trial inclination angle of failure surface, α_a and then the seismic active earth pressure distribution, p_{ae} can be obtained by differentiating P_{ae} with respect to depth, z and can be expressed as follows,

$$P_{ae} = \frac{\gamma z}{\tan \alpha_a} \frac{\sin(\alpha_a - \phi)}{\cos(\delta + \phi - \alpha_a)} \frac{k_h \gamma z}{\tan \alpha_a} \frac{\cos(\alpha_a - \phi)}{\cos(\delta + \phi - \alpha_a)} \sin \left[w \left(t - \frac{z}{V_s} \right) \right] + \frac{k_v \gamma z}{\tan \alpha_a} \frac{\sin(\alpha_a - \phi)}{\cos(\delta + \phi - \alpha_a)} \sin \left[w \left(t - \frac{z}{V_p} \right) \right] \quad (xiii)$$

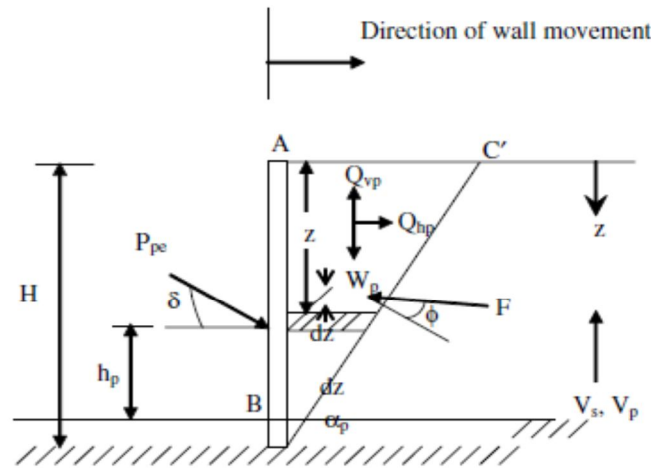


Figure 2. Model retaining wall considered for computation of pseudo-dynamic passive earth pressure (Choudhury & Nimbalkar 2005).

VI. SEISMIC PASSIVE EARTH PRESSURE

Fig.2 shows the passive state of earth pressure/ resistance on the rigid retaining wall. Again, a planar failure surface $BC\phi$ at an inclination of α_p with respect to horizontal is considered in the analysis. In Fig. 2, W_p is the weight of the failure wedge, Q_{hp} and Q_{vp} are the horizontal and vertical seismic inertia force components, F is the soil reaction acting at an angle of ϕ (soil friction angle) to the normal to the inclined failure wedge, P_{pe} is the total passive resistance acting at height h_p from the base of the wall at an inclination of δ (wall friction angle) to the normal to the wall. For the thin element of thickness dz at depth z as shown in Fig. 2, mass is given by,

$$m_p(z) = \frac{\gamma}{g} \frac{H-z}{\tan \alpha_p} dz \quad (xiv)$$

The weight of the whole wedge is,

$$W_p = \frac{1}{2} \frac{\gamma H^2}{\tan \alpha_p} \quad (xv)$$

The total horizontal inertia force acting on the wall can be expressed as

$$Q_{hp}(t) = \int_0^H m_p(z) \cdot a_h(z, t) dz = \frac{\eta \gamma a_h}{4\pi^2 g \tan \alpha_p} [2\pi H \cos \omega \zeta + \lambda (\sin \omega \zeta - \sin \omega t)] \quad (xvi)$$

International Journal for Research in Applied Science & Engineering Technology (IJRASET)

Total vertical inertia force acting on the wall can be expressed as

$$Q_{vp}(t) = \int_0^H m_p(z) \cdot a_v(z, t) dz = \frac{\eta \gamma a_v}{4\pi^2 g \tan \alpha_a} [2\pi H \cos \omega \psi + \lambda (\sin \omega \psi - \sin \omega t)] \quad (\text{xvii})$$

As the horizontal acceleration is acting from left to right and vice-versa and the vertical acceleration is acting from top to bottom and vice-versa, only the critical directions of $Q_{hs}(t)$ and $Q_{vs}(t)$ are considered to result the minimum seismic passive earth pressure. The total (static + seismic) passive resistance, P_{pe} can be obtained by resolving the forces on the wedge and considering the equilibrium of the forces and hence P_{pe} can be expressed as follows,

$$P_{pe} = \frac{W_p \sin(\alpha_p + \phi) - Q_{hp} \cos(\alpha_p + \phi) - Q_{vp} \sin(\alpha_p + \phi)}{\cos(\delta + \phi - \alpha_p)} \quad (\text{xviii})$$

where, W_p = Weight of the failure wedge in passive case

α_p = Angle of inclination of the failure surface with the horizontal in passive case

Q_{hp} = horizontal inertia force due to seismic accelerations respectively in passive case

Q_{vp} = vertical inertia force due to seismic accelerations respectively in passive case

P_{pe} is minimized with respect to trial inclination angle of failure surface, α_p and then the seismic passive earth pressure distribution, p_{pe} can be obtained by differentiating P_{pe} with respect to depth, z and can be expressed as follows,

$$p_{ae} = \frac{\gamma z}{\tan \alpha_p} \frac{\sin(\alpha_p + \phi)}{\cos(\delta + \phi + \alpha_p)} \frac{k_h \gamma z}{\tan \alpha_p} \frac{\cos(\alpha_p + \phi)}{\cos(\delta + \phi + \alpha_p)} \sin \left[w \left(t - \frac{z}{V_s} \right) \right] - \frac{k_v \gamma z}{\tan \alpha_p} \frac{\sin(\alpha_p + \phi)}{\cos(\delta + \phi + \alpha_p)} \sin \left[w \left(t - \frac{z}{V_p} \right) \right] \quad (\text{xix})$$

REFERENCES

- [1] Choudhury, D., Subba Rao, K.S. & Ghosh, S., 2002. Passive earth pressures distribution under seismic condition. 15th International conference of Engineering Mechanics Division (EM2002), ASCE, June 2-5, 2002, Columbia University, NY, USA, in CD.
- [2] Choudhury, D., 2004. Seismic passive resistance at soil-wall interface. 17th ASCE Engineering Mechanics Conference (EM2004), June 13-16, 2004, University of Delaware, Newark, DE, in CD.
- [3] Choudhury, D. & Nimbalkar, S.S., 2006. Pseudo-dynamic approach of seismic active earth pressure behind retaining wall, Geotechnical and Geological Engineering, Springer, The Netherlands, 24(5), 1103- 1113.
- [4] Kramer, S. L., 1996. Geotechnical Earthquake Engineering, New Jersey, Prentice Hall.
- [5] Mononobe, N. & Matsuo, H., 1929. On the determination of earth pressure during earthquakes. Proc., World Engrg. Conf., 9, 176.
- [6] DAS B M. Principles of soil dynamics
- [7] PRAKASH S. Soil dynamics



10.22214/IJRASET



45.98



IMPACT FACTOR:
7.129



IMPACT FACTOR:
7.429



INTERNATIONAL JOURNAL FOR RESEARCH

IN APPLIED SCIENCE & ENGINEERING TECHNOLOGY

Call : 08813907089  (24*7 Support on Whatsapp)