

# Characterization of Waste Plastic with Wood Particulate Composite

R. Venkatakrishnan<sup>1</sup>, N.Narmada Devi<sup>2</sup>, R. Ganesh Kumar<sup>3</sup>, R. Prabhakaran<sup>4</sup>

<sup>1, 2, 3, 4</sup>Assistant Professor

Department of Mechanical Engineering, IFET College of Engineering, Villupuram, India.

**Abstract:** Recycled waste plastics and wood sawdust, which are available in abundant amount, can be used for producing a composite, a new material that reduces the waste plastic pollution, production costs and environmental damage. The new composite materials will be used for manufacturing floor tiles that are environmentally friendly, light but still technically qualified, and are expected to replace the ceramic tiles that are relatively heavy. The possibilities of using recycled plastic wastes for the manufacturing of wood-plastic composites are examined. The samples were processed from the "light" fraction of construction plastic waste and wooden sawdust powder, and tested for tensile and un-notched impact strength and hardness properties. This paper presents an overview of the mechanical properties and durability of recycled mixed plastic waste composites. This paper identifies the research needs critical in the effective design and utilization of new composite materials in civil engineering and construction.

**Keywords:** Recycled plastic wastes, wood sawdust, wood-plastic composites.

## I. INTRODUCTION

Modern life is unthinkable without plastic, but there's a catch. Some of the properties that make it so useful, like its low cost, light weight and durability, also make it hard to dispose of. To make things worse, millions of tonnes of this waste end up in the oceans. Birds, turtles and sea life get tangled in plastic bags and abandoned fishing equipment, or they die from eating plastic debris. Over time, larger pieces of plastic break down into tiny particles called micro plastic, which can form a sort of plastic soup. These particles can soak up chemical additives and endocrine disruptors, and when they are eaten and enter the food chain, they can end up on our plates. It's a large-scale problem, and it needs a global response.

Plastic recycling is an important tool in environmentally friendly waste management because of the large amount of polymers used in many applications. Many plastic articles, in particular packaging, containers and other items, have a short life leading to waste materials that are slightly degraded and then with properties similar to those of the virgin materials. The melt reprocessing, necessary in the recycling operations of many polymers, can induce thermo mechanical degradation and then worsening of mechanical properties, aesthetic appearances, etc.

Recycled plastic pellets are essentially the middle line between waste plastic and the manufacturing of finished goods. Creating recycled plastic pellets is usually the final step in the recycling process before the material is distributed for the industrial production stage. Recycled plastic pellets are therefore one of the more popular choices for manufacturers.

Once waste plastic has been put through a plastic grinder and broken down, the smaller pieces are melted and compressed into recycled plastic pellets. These final recycled plastic pellets from RVK Enterprise are a high grade of enhanced, recycled material that is ready for remanufacturing.

The utilization of recycled plastic for the manufacture of recycled plastic pellet and wood particulate composites (WRPCs) has been studied by a number of authors [3, 4]. Composites containing recycled plastics and wood sawdust particles offer interesting combinations of properties [5–7]. This results in a strong impetus to expand the use of recycled plastics in the manufacture of WRPCs. The use of recycled plastic and wood sawdust seems inevitable, and the present opportunities are promising [9]. Comparisons of the stiffness/weight efficiencies revealed that the stiffness of wood composites equals or exceeds that of most traditional materials of construction, including steel, aluminum, glass-fiber composites, and talc-filled polyolefin, while retaining a major material cost advantage [10]. However, a major issue in achieving true reinforcement for teak wood-recycled plastic composites is the inherent incompatibility between the hydrophilic fibers and the hydrophobic polymers, which results in poor adhesion and, therefore, in poor ability to transfer stress from the matrix to the reinforcing fibers [11]. A more promising way to recover the economic value of this mixture could be the manufacturing of plastics lumber combining cellulosic reinforcement by blending techniques without

## International Journal for Research in Applied Science & Engineering Technology (IJRASET)

separation. Cellulose materials offer several advantages, when combined with plastics, because of their low density, high modulus, and high strength.

In this work, we report the investigation on the effect of combining teak wood sawdust powder and recycled thermoplastic plastic reinforced compositematerials on the mechanical properties of the composites.

### II. MATERIALS AND METHODS

#### A. Materials

The matrix material used in the fabrication of composite material was a mixture of Araldite epoxy resin (LY556) and Hardener (HY951) mixed thoroughly in mass ratio (10:1). Two different fillers, namely recycled plastic pellets and teak wood powder of average sizes ranges from 75 - 105  $\mu$ m were used as particulate reinforcements. The fillers were added in different mass percentages of matrix of epoxy resin to obtain different levels of reinforcement. The wooden Powder was collected from wood sawdust in the woodshop, the main species of which were hardwoods with an apparent density of 0.2–0.3 g/cm<sup>3</sup>. Fibers were separated by sifting into different mesh particle sizes. For the fibers were dried in an oven at 150°C for 2 hrs to ensure that their moisture content was less than 3%.

#### B. Processing of fillers

The fillers were obtained by grinding the respective raw materials to fine powders of size ranging in microns using a grinding machine. The grinding process increased surface roughness and contact area of the fillers, which favoured mechanical properties where interlocking with the matrix materials.

#### C. Mould preparation

Mould was fabricated with a mallex sheet of 50×50 cm size and rubber block piece was pasted on the dimensions of 300 mm × 300 mm on four sides. The fabrication was carried out through the hand lay-up process technique. Before lay-up process the mould has been applied with a releasing agent to insure that the art will not adhere to the mould. The top and bottom plates are covered with mallex sheet and the fibers, using epoxy resin compressed to avoid the debris from entering into composite parts during curing.

#### D. Preparation of Particulate filler composites

The hardener (HY951) was added into the epoxy resin LY556 in mass ratio (1:10) and stirred well. Dried filler in different mass percentages of resin as required was mixed with the epoxy-hardener mixture. The mixture was stirred thoroughly for 8 - 10 minutes to form a homogenous suspension. Composite material was produced by pouring the resin filler mixture into a mould and curing at room temperature for 24 hours. Details of different combinations of composite materials are presented in Table 1.

To form laminated composites with three layers of lamina of glass fiber woven mats. The entrapped air bubbles (if any) are removed carefully with a sliding roller and the mould was closed for curing at a temperature of 30°C for 24 h at a constant load of 10 kg.

Table 1

Various combination of two different fillers particles reinforced composites.

Samples	Recycled plastic waste particle content in gms	Teak wood powder in gms	Epoxy resin + hardener in gms
I	0	80	220
II	20	60	220
III	40	40	220
IV	60	20	220
V	80	0	220

After curing, the composites are extracted from the mould plate. Fabricated samples are placed in dry place for improving solid gel strength of the samples. Again repeat the same process for all samples preparation of hybrid natural composites.

## International Journal for Research in Applied Science & Engineering Technology (IJRASET)

### E. Mechanical Testing

Tensile strength, tensile modulus was measured using Universal Testing Machine - UTM (Instron 5567). Tensile test specimen were made according to ASTM D 638M. A crosshead speed of 5 mm/min was used. All specimens were conditioned at a room temperature before testing. Hardness test specimen was made according to ASTM D618. Impact test specimen was made according to ASTM D5628.

### F. Results and Discussion

The bonding strength at the fiber matrix interface plays a major role in the mechanical behavior of composite materials. In polymer matrix composites the most important function of the matrix is to distribute the applied stress among the fibers. The applied stress must be transferred across the fiber/matrix interface, transverse, longitudinal, shear strength of a polymer matrix composite depend heavily on the interfacial bond strength. Thus bonding must be maximized if the full strength of reinforcing fiber is to be realized, making accurate characterization of interfacial bonding in composite materials.

### G. Effect of wood flour on tensile properties

The effects of the wood flour (WF), 54 wt%, on the tensile properties of the composites are shown in Fig.2. As can be seen, the samples injection-molded from polymer blends (PBs) had higher strength and stiffness compared to the sample produced from the commercial LDPE. The loading of wood flour influenced the properties of the reference sample, both tensile strength (TS) and tensile modulus (TM), positively.

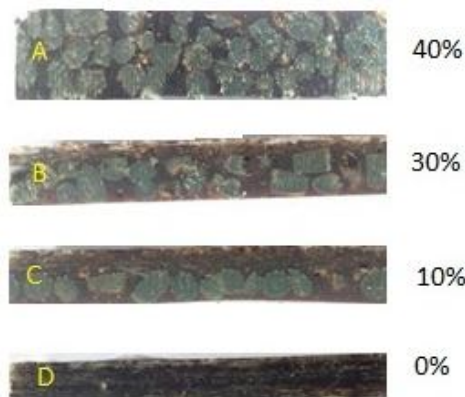


Fig.1 various combinations of two different fillers particles reinforced composites.

### H. Tensile test

The mechanical behavior of the composites prepared with the fabricated samples was tested in the Universal Tensile testing machine with testing load range of maximum 5 Ton with gear rotation speed of 1.25,1.5,2.5 mm/min. The experiments were conducted at normal room temperature. The test specimens were cut as per ASTM standards using cutting machining. The tensile strength was determined as per ASTM D 638 with standard gauge length of 50mm, with a cross head speed of 1.25 mm/min.

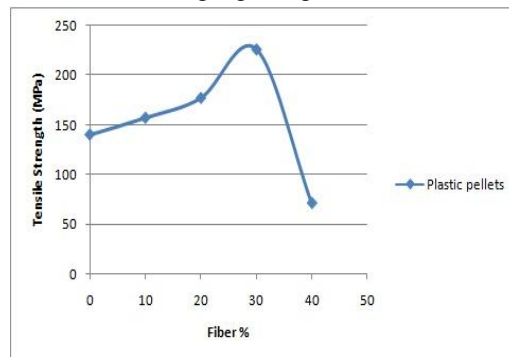


Fig: 2 Variation of tensile strength for different plastic pellets percentage.

## International Journal for Research in Applied Science & Engineering Technology (IJRASET)

Thus wood sawdust particles increases exposed on the bonding of the recycled plastic pellets surface resulting in better mechanical interlocking and epoxy resin matrix interfacial bond and, resulting in increased mechanical properties. Besides, the increase in tensile strength up to 30% fiber content is due to adequate strength adding of the recycled plastic pellets by the matrix and reasonable amount of plastic pellets to bear applied load. The decrease in strength and modulus at pellets content, of 40% probably resulted from poor bonding strength, also the epoxy resin content is not sufficient to wet all the plastic particle surfaces, leading to poor interfacial adhesion [13].

### I. Impact Tests

Impact strength of the composite specimens was carried out in impact testing machine according to ASTM D 256 standard. The specimen size was 65.5\*12.7\*3 mm. The izod impact test is a standardized high strain rate test which determines the amount of energy absorbed by a material during fracture. This absorbed energy is a measure of a given material's toughness and acts as a tool to study temperature-dependent ductile-brittle transition.

When compared to other different composite, 30% plastic pellets of composite have high impact strength. The gradually increase in impact strength up to 30% pellets content composite materials and then decrease in 40% pellets composite which shows in fig 3. The decrease in strength and modulus at pellets content, of 40% probably resulted from poor bonding strength of materials.

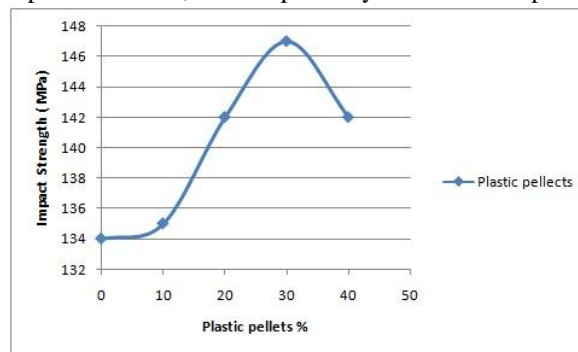


Fig: 3 Variation of impact strength for different plastic pellets percentage.

### J. Hardness Test

The hardness is measured from an indentation produced in the composite by applying a constant load on a specific indenter in contact with the surface of the composite for fixed time. This test was carried out in hardness testing machine as per standard ASTM D 2240.

The results of various hardness strength of different percentage of recycled plastic pellets content of composite materials as shown in fig 4. If increasing the plastic pellets in composite which leads to increase in brittle strength from ductile properties.

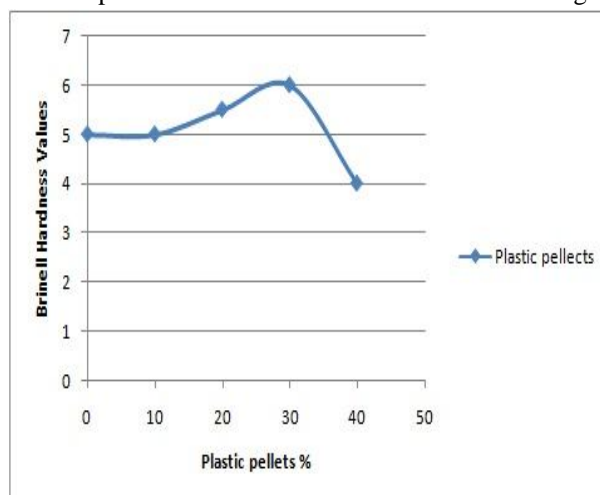


Fig: 4 Variation of hardness strength for different plastic pellets percentage.

# International Journal for Research in Applied Science & Engineering Technology (IJRASET)

## III. CONCLUSION

The mechanical properties of recycled plastic pellets and wood saw dust particulate composite have been investigated in this research. This results obtained reveal that the highest tensile, impact strength and hardness was obtained at 30% of recycled plastic pellets particle content. Besides, the increase in tensile strength up to 30% fiber content is due to adequate adding of the pellets by the matrix materials and reasonable amount of plastic pellets to bear applied load. The decrease in strength and modulus at pellets content, of 40% probably resulted from poor bonding strength, also the epoxy resin content is not sufficient to wet all the plastic particle surfaces, leading to poor interfacial adhesion. It was shown that recycled plastic waste pellets and wood fibers were very effective in the improvement of composite modulus, and the stiffness of the composites from secondary material was significantly higher compared to the reference; the hardness was comparable with the reference.

## REFERENCES

- [1] EU waste policy - The history behind the strategy. European commission publication.
- [2] Green paper On a European Strategy on Plastic Waste in the Environment, European Commission, Brussel, 7.3.2013, COM(2013) 123 final.
- [3] Directive 2008/98/EC of the European parliament and of the council of 19 November 2008 on waste and repealing certain Directives. L312/3.
- [4] Kou S-C, Poon C-S, Etxeberria M. Influence of recycled aggregates on long term mechanical properties and pore size distribution of concrete. *Cement Concrete Comp* 2011; 33:286–91.
- [5] Väntsi O, Kärki T. Utilization of recycled mineral wood as filler in wood-polypropylene composites. *Constr Build Mater* 2014; 55:220–6.
- [6] Keskiäsaari A, Butylina S, Kärki T. Use of construction and demolition wastes as mineral fillers in hybrid wood-polymer composites. *J Appl Polym Sci* 2016; 133(19):1–7.
- [7] Hopewell J, Dvorak R, Kosior E. Plastics recycling: challenges and opportunities. *Phil Trans R Soc B* 2009; 364:2115–26.
- [8] Selke SE, Wichman I. Wood fiber/polypropylene composites. *Composites: Part A* 2004; 35(3):321–6.
- [9] Rebeiz KS, Craft AP. Plastic waste management in construction: Technological and institutional issues. *Resour Conserv Recy* 1995; 15:245–57.
- [10] Naik TR, Singh SS, Huber CO, Brodersen BS. Use of post-consumer waste plastics in cement-based composites. *Cem Concr Res* 1996; 26(10):1489–92.
- [11] Marzouk OY, Dheilily RM, Queneudec M. Valorization of post-consumer waste plastic in cementitious concrete composites. *Waste Manage* 2007; 27(2):310–18.
- [12] Hınıslıoğlu S, Agar E. Use of waste high density polyethylene as bitumen modifier in asphalt concrete mix. *Mater Lett* 2004; 58:267–71.
- [13] İsmail ZZ, Al-Hashimi EA. Use of waste plastic in concrete mixture as aggregate replacement. *Waste Management* 2008; 28(11):2041–7.
- [14] Huang Y, Bird RN, Heidrich O. A review of the use of recycled solid waste materials in asphalt pavements. *Retour Conver Recy* 2007; 52:58–73.
- [15] Kazemi-Najafi S, Hamidinia E, Tajvidi M. Mechanical properties of composites from sawdust and recycled plastics. *J Appl Polym Sci* 2006; 100:3641–5.
- [16] Ha CS, Park HD, Cho WJ. Recycling of commingled plastics by cellulosic reinforcement. *J Appl Polym Sci* 1999; 74:1531–8.
- [17] M. Ramesh, K. Palanikumar, K. Hemachandra Reddy, Mechanical property evaluation of sisal–jute–glass fiber reinforced polyester composites, *Composites: Part B*; 2013; 48:1–9.
- [18] S.M. Sapuan, A. Leenie, M. Harimi, Y.K. Beng, Mechanical properties of woven banana fibre reinforced epoxy composites, *Materials and Design*; 2006; 27: 689–693.
- [19] K.M.M. Rao, K. M. Rao, Extraction and tensile properties of natural fibers: vakka, date and bamboo. *Composite Structures*, 2007; 77:288–295.
- [20] M. Boopalan, M. Niranjana, M. J. Umopathy, Study on the mechanical properties and thermal properties of jute and banana fiber reinforced epoxy hybrid composites, *Composites: Part B*; 2013; 51:54–57.
- [21] Bledzki AK, Mamun AA, Faruk O, Abaca fibre reinforced PP composites and comparison with jute and flax fibre PP composites, *Express Polymer Letters*; 2007; 1:755–762.
- [22] Mukhopadhyay S. S., Fanguero R. R., Yusuf A, Banana fibers – variability and fracture behaviour, *Journal of Engineered Fiber and Fabrics*; 2008; 3:1–7.
- [23] Benítez AN, Monzón MD, Angulo I, Ortega Z, Hernández PM, Marrero MD, Treatment of banana fiber for use in the reinforcement of polymeric matrices, *Measurement*; 2013; 46:1065–1073.
- [24] M.Sakthive, S.Ramesh, Mechanical Properties of Natural Fibre (Banana, Coir, Sisal) Polymer Composites. *SCIENCE PARK ISSN: 2321 – 8045 Vol-1, Issue-1, July 2013*
- [25] Maha M. Ibrahim, Alain Dufresne, Waleed K. El-Zawawy, Foster A. Agblevor in their research work on “Banana fibers and microfibrils as lignocellulosic reinforcements in polymer Composites”.
- [26] J.L. Guimarães, F. Wypych, C.K. Saul, L.P. Ramos, K.G. Satyanarayana, in their research work on “Studies of the processing and characterization of corn starch and its composites with banana and sugarcane fibers from Brazil”.