



iJRASET

International Journal For Research in
Applied Science and Engineering Technology



INTERNATIONAL JOURNAL FOR RESEARCH

IN APPLIED SCIENCE & ENGINEERING TECHNOLOGY

Volume: 5 Issue: VIII Month of publication: August 2017

DOI: <http://doi.org/10.22214/ijraset.2017.8061>

www.ijraset.com

Call: ☎ 08813907089

E-mail ID: ijraset@gmail.com

Design & Analysis of Triband Circularly Polarised Annular Slot Antenna

B. Bikya Naik¹, D. Akhila John²

¹M. Tech student, Dept. of ECE, ANUCET, Acharya Nagarjuna University, Guntur, Andhra Pradesh, India¹

²Assistant professor, Dept. of ECE, ANUCET, Acharya Nagarjuna University, Guntur, Andhra Pradesh, India²

Abstract: A single feed tri band circularly polarised annular slot antenna is simulated in this paper. The antenna structure is composed of two non-concentric slots that are fed by an L-shaped series step impedance micro strip feed line configuration. The proposed antenna is designed to operate at the 1.25GHz, 1.61GHz and 2.27GHz frequencies. The return loss for corresponding frequencies are -23.81dB, -21.025dB & -19.85dB. The gain at the respective frequencies are Simulated results show good return losses, VSWR, & axial ratio are obtained owing to this design, HFSS software is used to design and simulate the antenna.

Keywords: Circular polarization; Slot antenna; Tri band antenna;

I. INTRODUCTION

Circularly polarized (CP) antennas have received much attention for the applications of the wireless communication services such as global and positioning system (GPS) and other wireless communication systems. It is well known that circular polarization for antennas can reduce the propagation loss caused by multipath effects between the transmitter and receiver antenna. Thus, the circularly polarized antenna has been found very useful for wireless communication systems such as GPS [1-3]. Multi-band working pattern has become prevail to single-band mode. So it is greatly necessary to design a kind antenna to realize multi-band circular polarization and high gain at low elevation angle[4-6]. Various triple-band antennas for the wireless local area network (WLAN) and/or worldwide interoperability for microwave access (WiMAX) applications have been presented[7-11] However, some of these antennas did not achieve CP characteristics [7,8] or achieved them only for some of the three bands .

The wireless communication systems have two different operating bands, such as L1/L2 bands of GPS and 2.4/5.2 GHz of WLAN. Consequently, a CP antenna with dual-band operation is required. So far as planar resonant antennas are concerned, a considerable number of studies have been made on the dual-band CP design in the last few decades. These reported designs can be mainly divided into three types: stacking two resonant elements [12]-[14], using dual coplanar resonant elements [15]-[17], and embedding slots/slits into a single radiating patch [18]-[20]

In this paper the antenna consists of two non concentric annular slots with an L-shaped series step impedance feed configuration. The frequency-ratio of antenna can be controlled by adjusting the dimensions of two annular slots. This design is compact in structure and is suitable for L band frequencies. The performance of various antennas are compared and tabulated below.

Ref.No	Feed Type	Frequency	Return Losses	Axial Ratio
1	micro strip	2.21GHz 3.67GHz 4.5GHz	-20.25dB -14.5dB -25.15dB	1.11dB 1.52dB 157dB
2	L-shaped micro strip	2.55GHz 4.35GHz 5.57GHz	-27.5dB -22.89dB -11.63dB	1.25dB 1.24dB 1.11dB
3	L-shaped micro strip feed	1.2GHz 1.65GHz 2.45GHz	-16dB -16.5dB -22.5dB	1.05dB 1.5dB 1dB

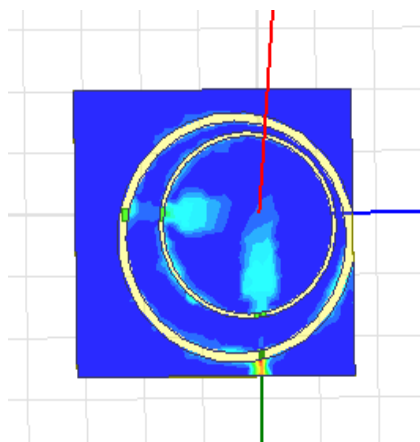
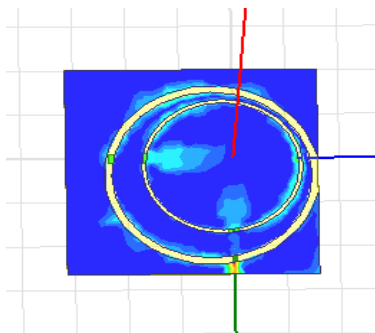
Table 1: Comparison of reference antennas

444

Parameters	Dimensions (mm)
W_a	60
W_b	35
W_f	1.7
w_1	4
w_2	10
h_1	0.813
R_1	40.79
R_2	30.49
d	5
Parameters	Dimensions (mm)
L_a	53
L_b	40
l_f	15
l_1	11
l_2	22
l_s	18
S_1	3
S_2	1.5
d_o	3

Table 2: Dimensions of proposed antenna

III. CURRENT DENSITY DISTRIBUTIONS



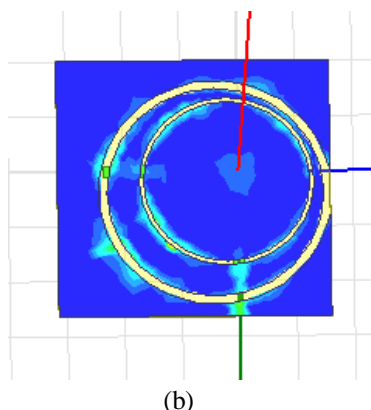


Fig 2: Surface current distributions for the three bands. (A) Lower frequency, (B) Middle frequency, and (C) Upper frequency

Length of the feed line chosen to be 15mm and radius R_1 & R_2 were chosen be 40.66mm and 30.36 mm for L1&L5 bands respectively. The optimized values of S_1 & S_2 were 3&3 and W_1 & W_2 were 4&10 respectively. The optimized parameter values of the proposed antenna were given in table 1. An L shaped series step impedance feed line is etched to improve the parameters of the proposed antenna in L1&L5 bands.

IV. PARAMETERS STUDY

In this parameter results of the antenna at different origin positions are demonstrated. And the resulting values of the antenna parameters like return losses , VSWR , Axial ratio at variable operating frequencies are shown in below Tables.

A. CASE 1:

Parameters $F_c=1.37\text{GHz}$, $R_1=38.21\text{mm}$, $R_2=29\text{mm}$, $S_1=3\text{mm}$, $S_2=1.5\text{mm}$, $h=0.813\text{mm}$

Origin	Frequency	Axial Ratio	Return Losses	VSWR
O1=(5,-5,0.813)	1.138GHz	7.50dB	-12.54dB	1.57
O2=(3,-3,0.813)	1.58GHz	1.14dB	-24.40dB	2.63
	1.80GHz	2.67dB	-23.67dB	2.83
O1=(6,-6,0.813)	1.27GHz	4.23dB	-16.23dB	2.54
O2=(3,3,0.813)	1.55GHz	4.6dB	-14.69dB	1.83
	1.80GHz	2.3dB	-18.13dB	1.05
O1=(6,-6,0.813)	1.52GHz	3.9dB	-13.31dB	1.24
O2=(4,-4,0.813)	1.80GHz	3.9dB	-15.10dB	1.86
	2.33GHz	4.9dB	-25.85dB	1.22

Table 3:Parameter responses at different origins

B. Case 2:

Parameters : $F_c=1.40\text{GHz}$, $R_1=40.79\text{mm}$, $R_2=30.49\text{mm}$, $S_1=3\text{mm}$, $S_2=1.5\text{mm}$, $h=0.813\text{mm}$

Origin	Frequency	Axial Ratio	Return Losses	VSWR
O1=(8,-8,0.813)	1.25GHz	1.25dB	-23.88dB	1.5
O2=(4,-4,0.813)	1.47GHz	1.47dB	-17.93dB	1.19
	1.62GHz	1.62dB	-18.27dB	1.23

Table 4: Response with the effective radius 40.79mm,30.49mm

C. Case : 3

Parameters: $F_c=1.39\text{GHz}$, $R_1=40.79\text{mm}$, $R_2=30.49\text{mm}$, $S_1=3\text{mm}$, $S_2=1.5\text{mm}$, $h=0.813\text{mm}$

Origin	Frequency	Axial Ratio	Return Losses	Vswr
O1=(7,-7,0.813)	1.3056GHz	3.64dB	-31.15dB	1.05
O2=(4,-4,0.813)	1.6667GHz	3.18dB	-19.996dB	1.28
	2.3333GHz	4.14dB	-18.95dB	1.25
O1=(7,-7,0.813)	1.305GHz	2.8dB	-29.44dB	1.06
O2=(5,-5,0.813)	1.635GHz	5.6dB	-22.91dB	1.3
	2.278GHz	3.32dB	-20.21dB	2.19

Table 5: Response with the effective radius 40.79mm,30.49mm at different origins

D. Final case

Parameter : $F_c=1.39\text{GHz}$, $R_1=40.79\text{mm}$, $R_2=30.49\text{mm}$, $S_1=3\text{mm}$, $S_2=1.5\text{mm}$, $h=0.813\text{mm}$

Origin	Frequency	Axial Ratio	Return Losses	Vswr
O1=(8,-8,0.813)	1.25GHz	1.9dB	-23.81dB	1.13
O2=(4,-4,0.813)	1.611GHz	0.33dB	-21.05dB	1.26
	2.27GHz	2.14dB	-19.73dB	1.23

Table 6: Response at final case

The Simulated antenna is designed from the final case parameters using on a Rogers RO4003 laminate. Figure 3 illustrates the AR plotted against frequency. Figure 4 illustrates the simulated S11 parameters. Figure 5 illustrates the VSWR plot.

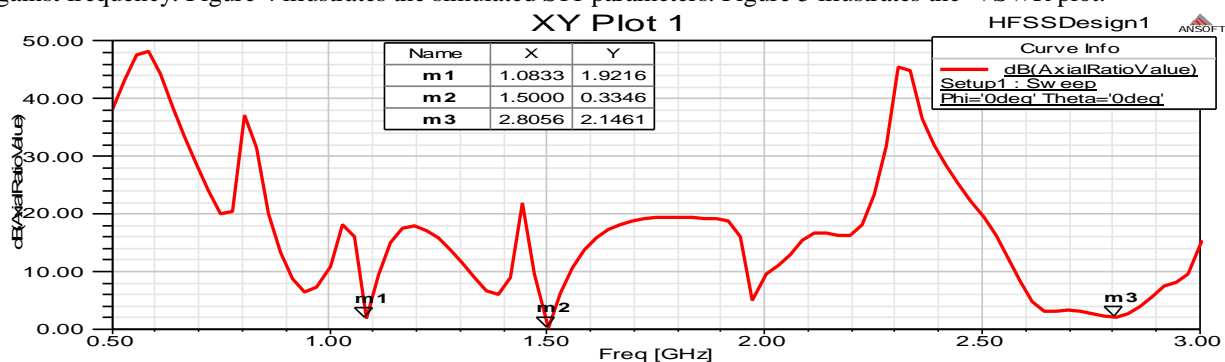


fig 3: Axial Ratio

The axial ratios are 1.9dB for 1.08GHz , 0.3dB for 1.5GHz and 2.14dB for 2.5GHz for lower band middle band, and upper band.

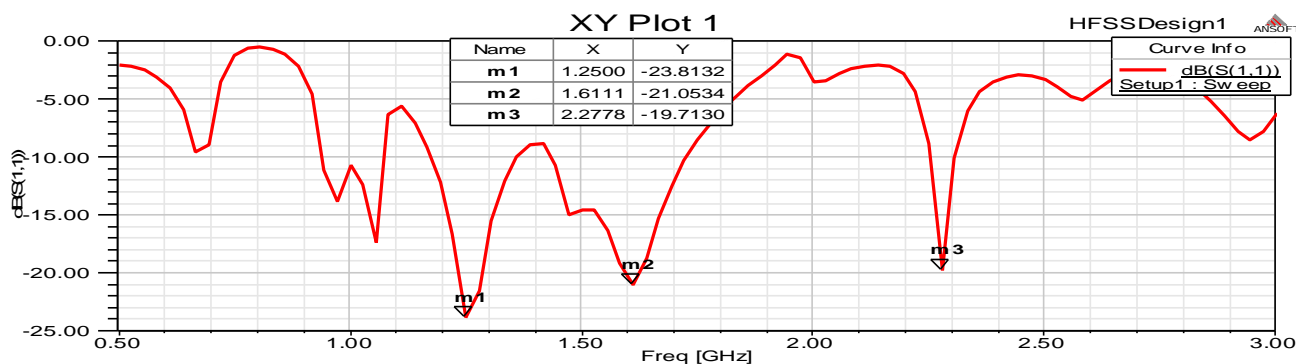


Fig 4: Simulated Return losses

The above figure 4 shows the simulated return losses. The return losses are -23.8132dB for 1.25GHz, -21.05dB for 1.611GHz, and -19.71dB for 2.27GHz.

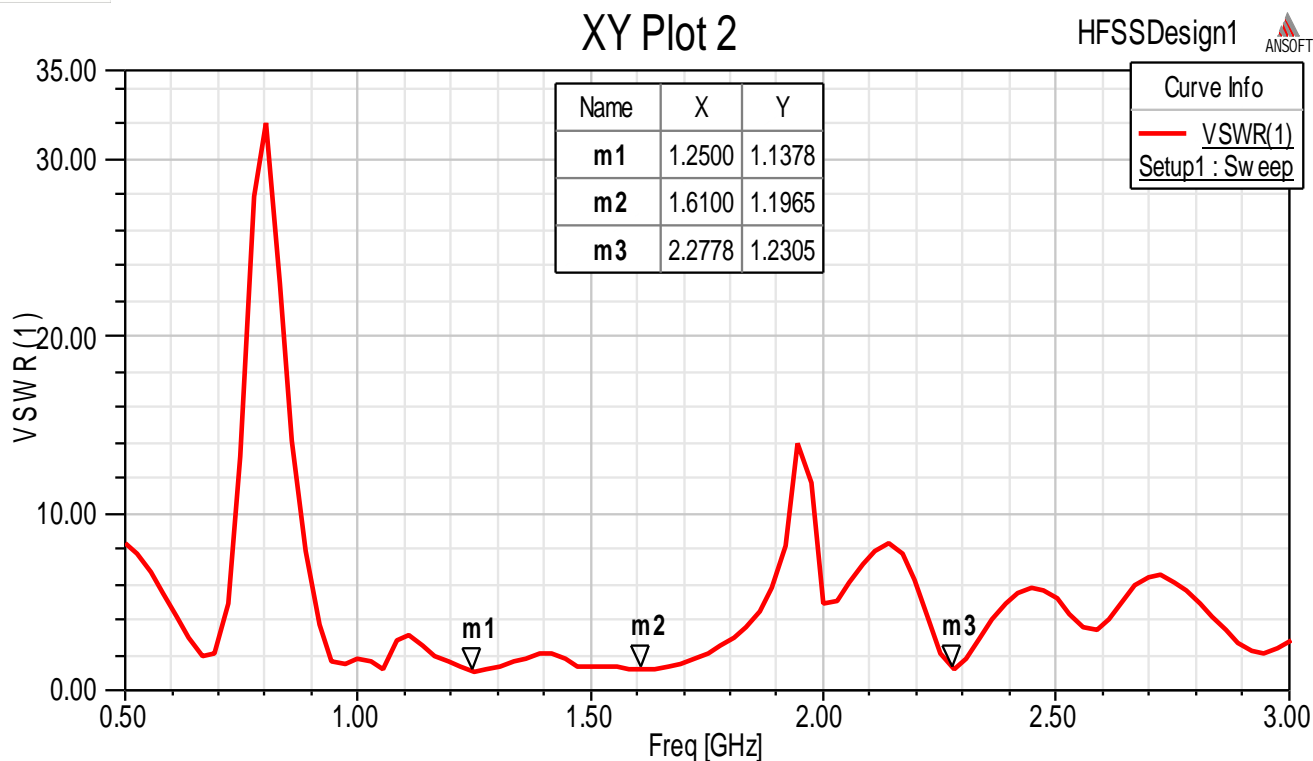


Fig 5: Simulated VSWR

The above figure 5 shows the simulated VSWR. The simulated VSWR are 1.13 for 1.25GHz , 1.26 for 1.63GHz and 1.23 for 2.27GHz.

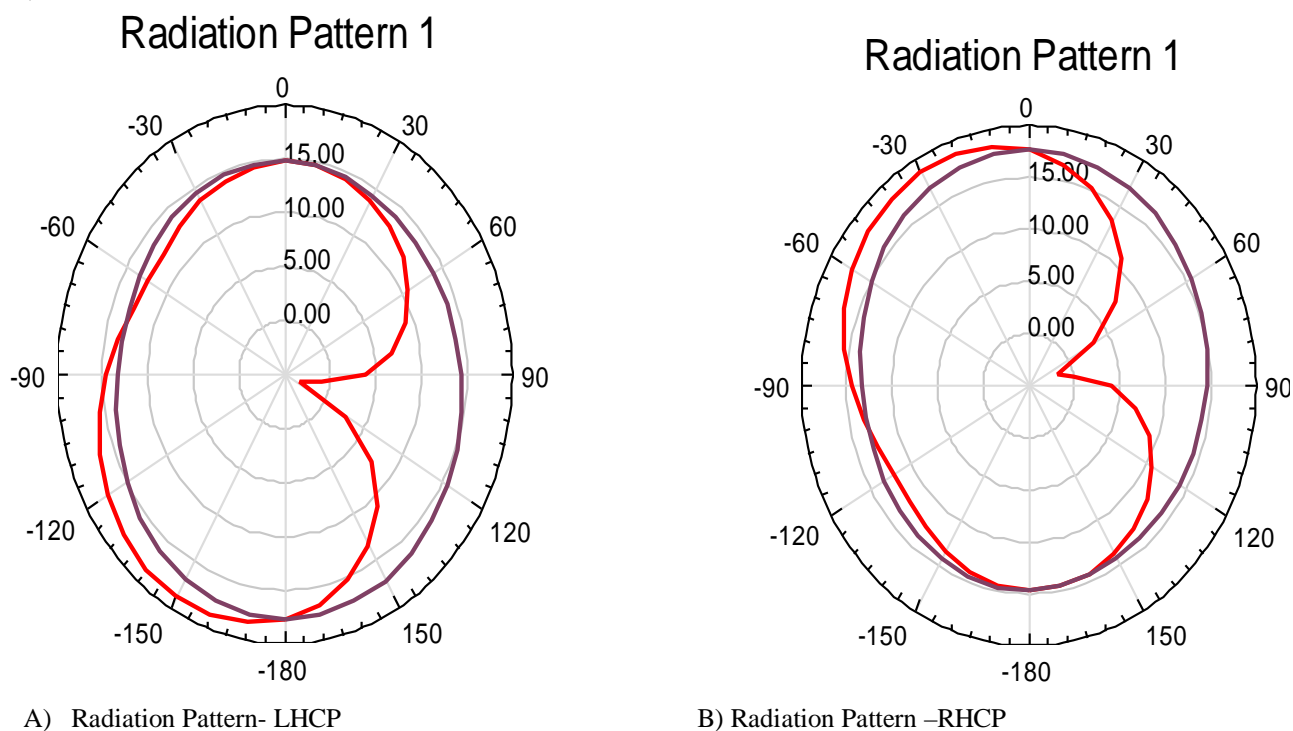
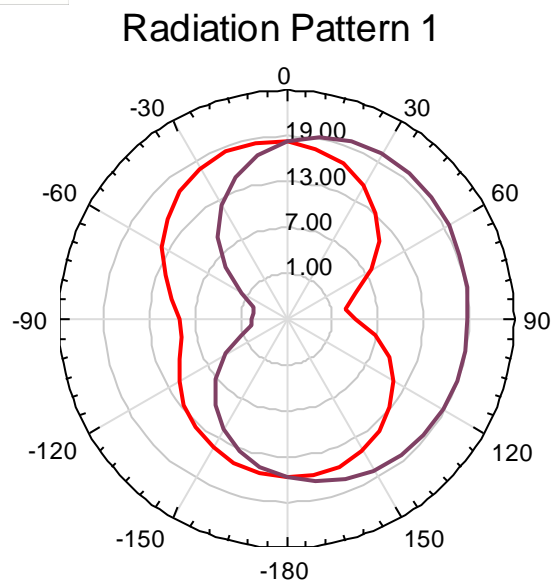
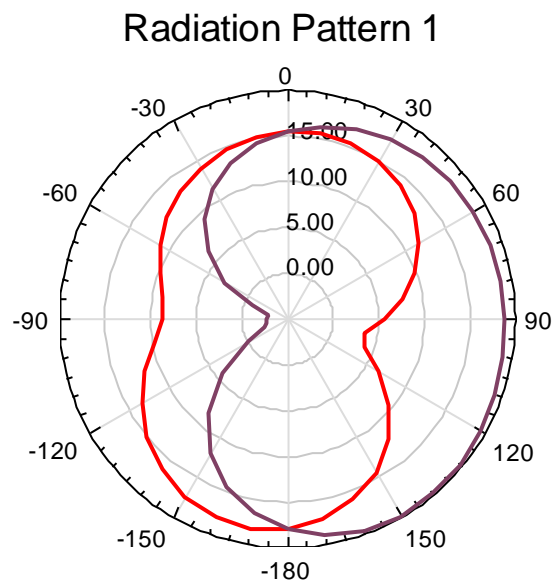


Fig 6 : Radiation patterns at 1.25 GHz. (a) XoZ-plane, (b) YoZ-plane.

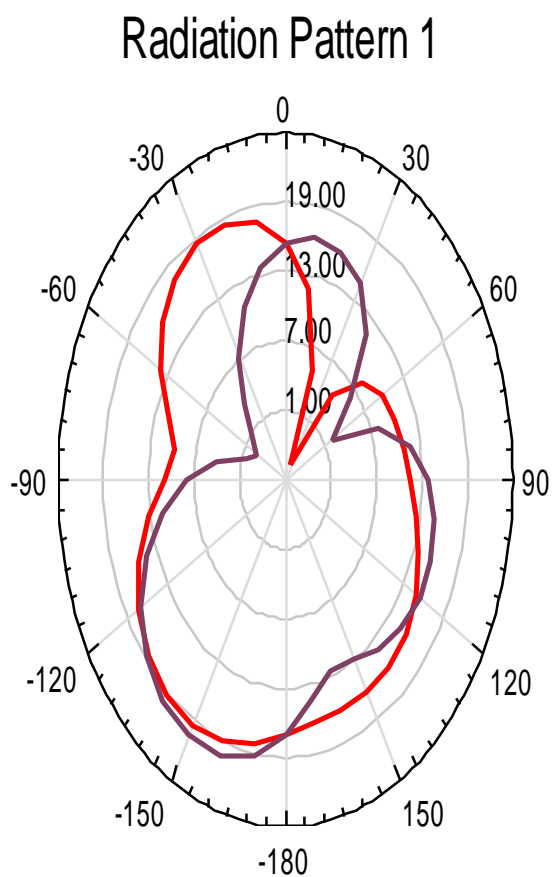


A) Radiation Pattern -LHCP

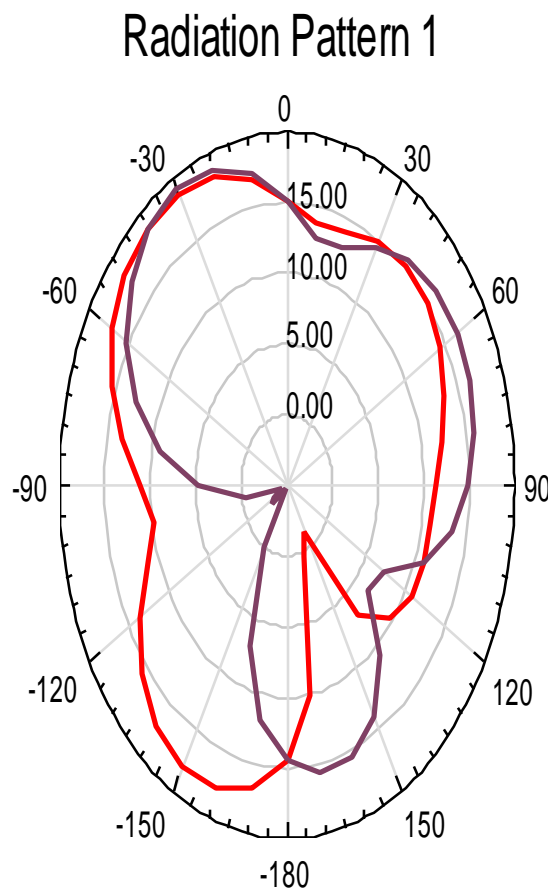


B) Radiation Pattern RHCP

Fig 7 : Radiation patterns at 1.61 GHz. (a) XoZ-plane, (b) YoZ-plane.



A) Radiation Pattern- LHCP



B) Radiation Pattern RHCP

Fig 8 : Radiation patterns at 2.27 GHz. (a) XoZ-plane, (b) YoZ-plane.

The radiation patterns at different frequencies are plotted in the figures 6,7 and 8.

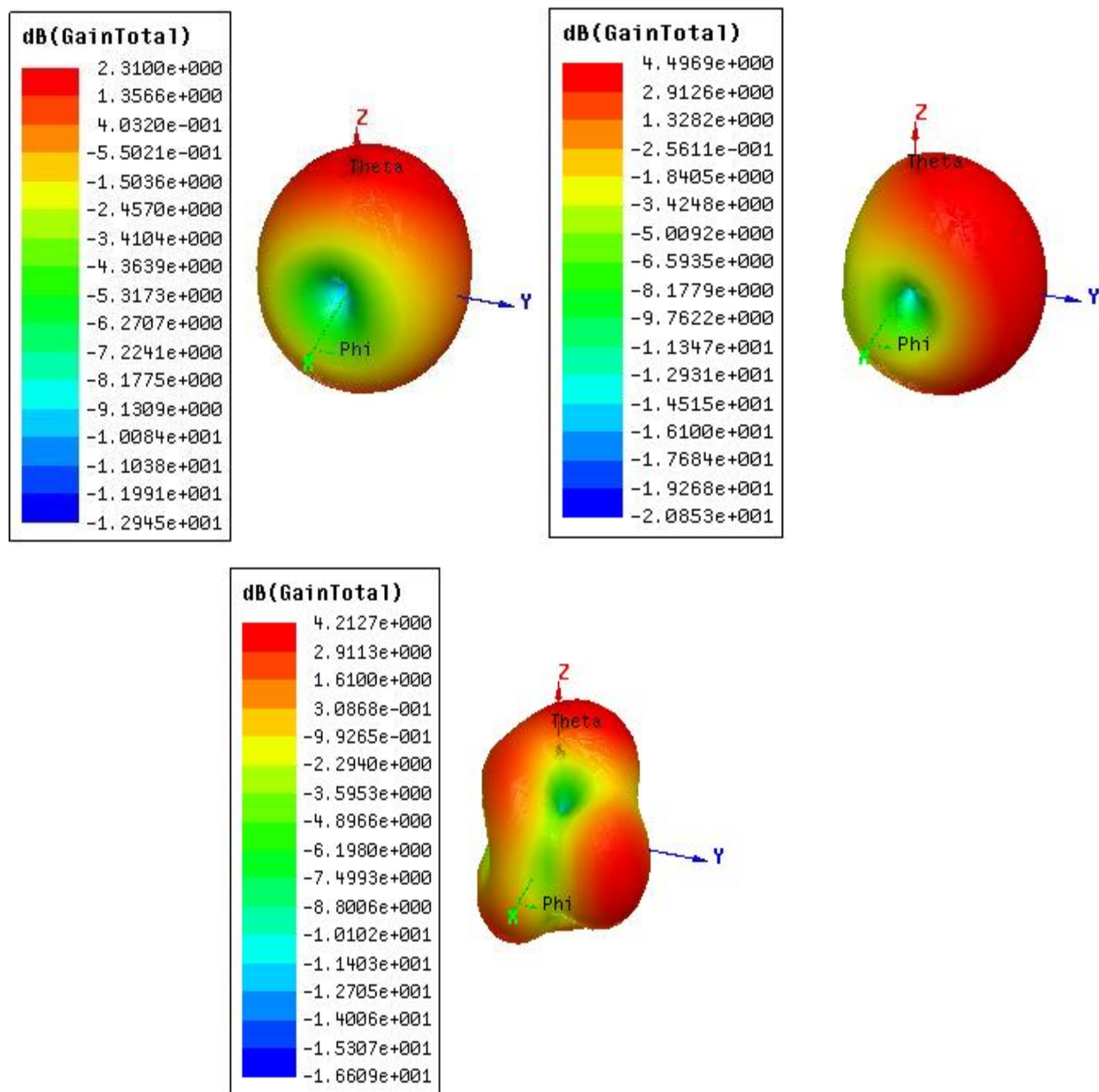


Fig 9: Simulated Gains

The above figure 5 shows the simulated Gains. The simulated Gains are 2.31dB for 1.25GHz , 4.49dB for 1.63GHz and 4.21dB for 2.27GHz.

V. CONCLUSION

A tri-band circularly polarized annular slot antenna is designed using a strip feed has been proposed. By employing two non concentric slots coupled with an L-shaped series step impedance feed line, a tri-band circular polarization was achieved at 1.25GHz, 1.61GHz and 2.27GHz. More parameters tuning freedom is achieved by using the series step impedance micro strip feed line. The simulated results obtained for Return losses, VSWR and Axial ratio are good when compared with that of the reference work.

REFERENCES

- [1] C F. Jou, J. W. Wu and C. J. Wang, "Novel broadBand monopole antennas with dual-band circular polarization," IEEE Trans. Antennas and Propag., vol. 57, no. 4, pp. 1207-1034, Apr. 2009.

- [2] S. A. Rezaeieh, "Dual band dual sense circularly polarized monopole antenna for GPS and WLAN applications," IET Electron. Lett., vol. 47, no. 22, pp. 1212-1214, Oct. 2011.
- [3] C. J. Wang, "A wideband loop-like monopole antenna with circular polarization," Microw. Opt. Technol. Lett., vol. 53, no. 11, pp. 2556-2560, Nov. 2011
- [4] C. F. Jou, J. W. Wu and C. J. Wang, "Novel broadBand monopole antennas with dual-band circular polarization," IEEE
- [5] S. A. Rezaeieh, "Dual band dual sense circularly polarized monopole antenna for GPS and WLAN applications," IET Electron. Lett., vol. 47, no. 22, pp. 1212-1214, Oct. 2011.
- [6] C. J. Wang, "A wideband loop-like monopole antenna with circular polarization," Microw. Opt. Technol. Lett., vol. 53, no. 11, pp. 2556-2560, Nov. 2011
- [7] Verma, S., and Kumar, P.: 'Compact triple-band antenna for WiMAX and WLAN applications', Electron. Lett., 2014, 50, (7), pp. 484-486
- [8] Lu, J.H., and Lee, Y.Y.: 'Planar compact triple-band monopole antenna for IEEE 802.16 m worldwide interoperability for microwave access system', IET Microw. Antennas Propag., 2013, 7, (13), pp. 1045-105
- [9] Wu, T., Shi, X.W., Li, P., and Bai, H.: 'Tri-band microstrip-fed monopole antenna with dual-polarisation characteristics for WLAN and WiMAX applications', Electron. Lett., 2013, 49, (25), pp. 1597-159
- [10] Baek, J.G., and Hwang, K.C.: 'Triple-band unidirectional circularly polarized hexagonal slot antenna with multiple L-shaped slits', IEEE Trans. Antennas Propag., 2013, 61, (9), pp. 4831-4835
- [11] Ta, S.X., Park, I., and Ziolkowski, R.W.: 'Circularly polarized crossed dipole on an HIS for 2.4/5.2/5.8-GHz WLAN applications', IEEE Antennas Wirel. Propag. Lett., 2013, 12, pp. 1464-1467
- [12] X. Sun, Z. Zhang, and Z. Feng, "Dual-band circularly polarized stacked annular-ring patch antenna for GPS application,"
- [13] . C. Chen, G. C. Liu, X. Y. Chen, T. F. Lin, X. G. Liu, and Z. Q. Duan, "Compact dual-band GPS microstrip antenna using multilayer LTCC substrate," IEEE Antennas Wireless Propag. Lett., vol. 9, pp. 421-423, 2010.
- [14] S. I. Latif and L. Shafai, "Circular polarisation from dual-layer square-ring microstrip antennas," IET Microw. Antennas Propag., vol. 6, no. 1, pp. 1-9, Feb. 2012.
- [15] W. T. Hsieh, T. H. Chang, and J. F. Kiang, "Dual-band circularly polarized cavity-backed annular slot antenna for GPS receiver," IEEE Trans. Antennas Propag., vol. AP-60, no. 4, pp. 2076-2080, Apr. 2012.
- [16] W. Ren, "Compact 2.4/5-GHz dual-band annular-ring slot antenna with circular polarization," Microwave and Opt. Technol. Lett., vol. 51, no. 8, pp. 1848-1852, Aug. 2009.
- [17] H. K. Kan, R. B. Waterhouse, and D. Pavlickovski, "Compact dual concentric ring printed antennas," IEE Proc.-Microw. Antennas Propag., vol. 151, no. 1, pp. 37-42, Feb. 2004.
- [18] K. P. Yang and K. L. Wong, "Dual-band circularly-polarized square microstrip antenna," IEEE Trans Antennas Propag., vol. 49, no. 3, pp. 377-382, Mar. 2008.
- [19] G. B. Hsieh, M. H. Chen, and K. L. Wong, "single-feed dual-band circularly polarised microstrip antenna," Electron. Lett., vol. 34, no. 12, pp. 1170-1171, Jun. 11, 1998.
- [20] Nasimuddin, Z. N. Chen, and X. Qing, "Dual-band circularly polarized S-shaped slotted patch antenna with a small frequency-ratio," IEEE Trans Antennas Propag., vol. 58, no. 6, pp. 2112-2115, Jun. 2010

VI. ACKNOWLEDGMENT

I would like to thanks to the authorities of Acharya Nagarjuna University College of Engineering and Technology, Guntur for the support and encouragement to utilized the facilities to complete this work.

BIOGRAPHIES

B.BIKYA NAIK obtained B.Tech from Vasireddy Venkatadri institute of Science and Technology, Nambur in 2014, pursuing M.Tech in Communication and Signal processing under the department of Electronics and Communication Engineering in University College of Engineering and Technology, Acharya Nagarjuna University, Guntur, India. His research interests are Communication systems and Antennas.

D.AKHILA JOHN is doing her Ph.D in Acharya Nagarjuna University Guntur. She is currently working as Assistant Professor, Department of ECE in University College of Engineering and Technology, Acharya Nagarjuna University, Guntur, India.



10.22214/IJRASET



45.98



IMPACT FACTOR:
7.129



IMPACT FACTOR:
7.429



INTERNATIONAL JOURNAL FOR RESEARCH

IN APPLIED SCIENCE & ENGINEERING TECHNOLOGY

Call : 08813907089  (24*7 Support on Whatsapp)