



# IJRASET

International Journal For Research in  
Applied Science and Engineering Technology



---

# INTERNATIONAL JOURNAL FOR RESEARCH

IN APPLIED SCIENCE & ENGINEERING TECHNOLOGY

---

**Volume:** 10    **Issue:** XI    **Month of publication:** November 2022

**DOI:** <https://doi.org/10.22214/ijraset.2022.47683>

[www.ijraset.com](http://www.ijraset.com)

Call:  08813907089

E-mail ID: [ijraset@gmail.com](mailto:ijraset@gmail.com)

# CFD Analysis of Shell and Coil Heat Exchanger by Using Different Mass Flow Rate for Hot and Cold Fluid

Ajit Kumar<sup>1</sup>, Vijaykant Pandey<sup>2</sup>

<sup>1</sup>M-Tech Research Scholar, Bhabha Engineering Research Institute, Bhopal (M.P.), India

<sup>2</sup>Assistant Professor, Bhabha Engineering Research Institute, Bhopal (M.P.), India

**Abstract:** Shell and Helical coils are eminent coiled tubes which have been used in diversity of solicitations e.g. heat recovery, air-conditioning and preservation schemes, chemical reactors and dairy practices. Shell and Helical coil heat exchanger is the recent improvement of heat exchangers, to accomplish the industrial demand. A shell and helical coil are necessary for various heat exchangers, nuclear reactors and in chemical engineering, for of large quantity of heat is conveying in a slight space with high heat transmission rates and slight habitation time distributions even it suffers through a disadvantage of larger pressure drop. The unbiased of this work is to cheered the pressure drop inside a shell and helical coil heat exchanger, heat transfer progression can be improved by increasing secondary flow inside the coil and this can be allow by appropriate blending of the fluid inside the helical coil. For this, my planned work on CFD to scrutinize the helical coil by using ANSYS 18.2. A 3D design of CAD model of helical coil of tube outer diameter (do) 16 mm, inner diameter of helical coil (di) 12 mm, pitch of 26.3mm, pitch coil dia. 86 mm, tube length of 235 mm, shell diameter is 110 mm and shell length is 215 mm, is generated by using ANSYS fluent 18.2.

**Keywords:** Shell, Helical Coil, Nano-fluid, Heat Exchanger, CFD, Pressure Drop, Temperature Distribution.

## I. INTRODUCTION

In the era of growing population of world, per capita income along with demand for fresh and processed food and drinks is increasing enormously resulting in critical need in effective process technologies to produce them. Right nowadays, half of the world's inhabitant's lives in a town or city and this can be expected to be 9 billion people on the planet by 2050. Processed nutrients and liquid refreshment from name-brand manufacturers, packed to suit the needs of customers, are in just as high request as fresh products – particularly among urban buyers. Heat exchange is a key element that points on these products' journey to the person who lastly consumes.

Cooling is vital but not sufficient alone; in addition, loss of liquid and vitamins must be efficiently prevented. Heat exchangers form us set criteria with awe to energy efficiency, mid-air throw and effectiveness. These are crucial features for accessibilities, food distribution centres, storerooms, invention halls and hypermarkets require tremendous cooling duty. The heat exchangers can be upgraded to execute heat-transfer duty by transferring of heat and upsurge techniques as active and passive techniques. The active technique involves exterior forces, e.g. electric field and surface vibrations etc. The passive technique requires fluid flow behaviour and distinct apparent geometries. Curved tubes are used for transferring of heat improvement procedures, relatively a lot of heat transfer applications.

Shell and Helical coils are distinguished shell and coiled tubes which have been used in multiplicity of solicitations e.g. heat recovery, air-conditioning and refrigeration schemes, chemical reactors and dairy practices. Shell and Helical coil heat exchanger is the modern improvement of heat exchangers, to fulfill the industrial demand. Pressure drop features are essential for calculating fluid effect to overwhelmed pressure drops and for arrangement of necessary mass flow rates. The pressure drops are also a function of the pipe curvature.

The curvature creates secondary flow arrangement which is perpendicular to main axial stream path. This secondary flow has insignificant capability to increase heat transfer allocated to mixing of the fluid. The strength of secondary flow established in the tube. It is the value of tube diameter and coil diameter. The force which arises due to curvature of the tube and results in secondary flow advancement with increased rate of heat transfer is centrifugal force.

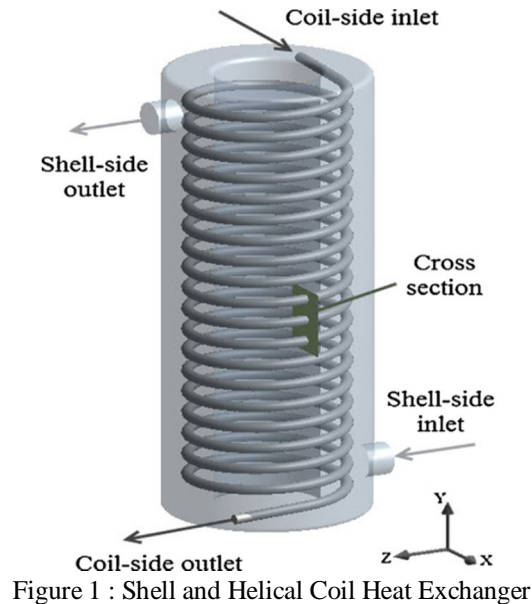


Figure 1 : Shell and Helical Coil Heat Exchanger

## II. NANO FLUID

Now a day, it is seen that the liquid coolants which are used today, they have very poor thermal conductivity (with the omission of liquid metal, which cannot be used at most of the relevant useful temperature ranges). For example, water is even poorer in heat conduction than copper, in the case with engine coolants, the oils, and organic coolants. The liquid having thermal conductivity and it will be limited by the natural restriction on creating turbulence or increasing area. To overcome this problem the suspension of solid in cooling liquid is a better option and a new fluid will be made which is used to increase the thermal conduction behaviour of cooling fluids.

Nanofluid are fluid particles which are a lesser amount even a  $\mu$  (nearly  $10^{-9}$  times smaller) in diameter and very reactive and effective material which can be used to rise factor like rate of reaction, thermal conductivity of some metal or material are that much reactive and offered four possible methods in nano fluids which may contribute to thermal conduction.

- 1) Brownian motion of nano particles.
- 2) Liquid layering at the liquid/particle edge.
- 3) Ballistic nature of heat transport in nano particles.
- 4) Nano particle clustering in nano fluids.

The Brownian motion of nano particles is too slow to transfer heat over a nano fluid. This mechanism works well only when the particle collecting has both the positive and negative effects of thermal conductivity which is gained indirectly through convection.

## III. LITERATURE REVIEW

Shell and Helical coil is very compact in structure and it possess high heat transfer coefficient that why helical coils heat exchangers are widely used. In literature it has been informed that heat transfer rate of helical coil is larger than straight tube.

- 1) Pranita Bichkar et.al. [1] has done his study in Shell and Tube Heat Exchangers with the effects of types of baffles. This paper presents the numerical simulations carried out on different baffles i.e. single segmental, double segmental and helical baffles. This shows the effect of baffles on pressure drop in shell and tube heat exchanger. Single segmental baffles show the formation of dead zones where heat transfer cannot take place effectively. Double segmental baffles reduce the vibrational damage as compared to single segmental baffles. The use of helical baffles shows a decrease in pressure drop due to the elimination of dead zones. The less dead zones result in better heat transfer. The lower pressure drop results in lower pumping power, which in turn increases the overall system efficiency. The comparative results show that helical baffles are more advantageous than other two baffles.
- 2) Lei et al. [2] carried out a numerical investigation to study the impact of various baffle inclination angles on fluid flow and heat transfer of continuous helical shell and tube heat exchangers by using periodic model. From the results computed, it was observed that the best-integrated performance occurs approximately  $45^\circ$  helix angle. Performance of heat exchanger also depends on pressure drop. Leakage can reduce pressure drop and thus per compartment average heat transfer coefficient.



- 3) Vidula Vishnu Suryawanshi et.al. [3] done his study in design & Analysis of Helical Coil Heat Exchanger. In this paper CFD analysis is been carried out by various different diameter different material Future works required to be carried out for further improvement of helical heat exchangers are:CFD analysis and optimization of the curvature ratio using Dean number and Colburn factor for boundary conditions of constant wall temperature and constant wall heat flux for both laminar and turbulent flow. To analyse the results and optimize the heat transfer rate with varying the pitch of the helical coil.
- 4) Vishal Momale et.al. [4] Study in the performance analysis of conical helical tube heat exchanger with straight and conical shell using cfd. The analysis of conical helical tube heat exchanger is carried out using computational fluid dynamics. There is much improvement in heat transfer as the more shell fluid comes in contact with the tube fluid when we use conical shell instead of helical shell. The pressure drop will increase with conical shell arrangement. We can still increase heat transfer if we use baffles.
- 5) The Mohamed Ali et.al. [4] was performed the experimental investigation of Natural convection made to study, steady type Natural Convection was obtained from turbulent natural convection to water. The experiment have been carried for four coil diameter to tube diameter ratio for five and ten coil tubes and for five pitch outer diameter ratio. He correlated Rayleigh Number for two different coil sets and the heat transfer coefficient decreases with coil length for tube diameter  $d_o=0.012\text{m}$  but increases with coil length for  $d_o=0.008\text{m}$ . For tube diameter of 0.012 m with either five or ten coil turns, critical  $D/d_o$  is obtained for a maximum heat transfer coefficient.
- 6) R. Patil et.al. [5] suggested design methodology for helical coil heat exchanger. heat transfer coefficient based on the inside coil diameter  $d_i$ , is obtained using method for a straight tube either one of Sieder –Tate relationships or plot of the Colburn factor,  $J_H$  vs  $Re$ . outside heat transfer coefficient is calculated using correlation for different range of Reynolds number. Helical coil heat exchanger is the better choice where space is limited and under the conditions of low flow rates or laminar flow.
- 7) N. Ghorbani et.al. [6] conducted experimental study of thermal performance shell and coil heat exchanger in the purpose of this article is to access the influence of tube diameter , coil pitch , shell side and tube side mass flow rate on the modified effectiveness and performance coefficient of vertical helical coiled tube heat exchanger. The calculation has been performed for the steady state and the experiment was conducted for both laminar and turbulent flow inside coil. It was found that the mass flow rate of tube side to shell ratio was effective on the axial temperature profiles of heat exchanger. He concluded that with increasing mass flow rate ratio the logarithmic mean temperature difference was decreased and the modified effective's decreases with increasing mass flow rate.
- 8) Sunil Kumar et.al. [7] has done his investigation on the optimize design of helical coil heat exchanger by using fins and the Compare pressure & temperature by conventional design. The final outcome of the study increase the total heat transfer rate inside the domain. And increase the pressure drop inside the domain. The water outlet temperature decrease up to 315k and cold outlet temperature increase up to 320 k. and total pressure drop increase with the temperature increases. Finally the CFD data were compared with previous data the total pressure drop increase up to 0.65 bar for case-2.the overall efficiency of the system incites up to 5% to 6%.
- 9) K. Abdul Hamid et. al. [8] has done work on pressure drop for Ethylene Glycol (EG) based nanofluid. The nanofluid is prepared by dilution technique of  $\text{TiO}_2$  in based fluid of mixture water and EG in volume ratio of 60:40, at three volume concentrations of 0.5 %, 1.0 % and 1.5 %. The experiment was conducted under a flow loop with a horizontal tube test section at various values of flow rate for the range of Reynolds number less than 30,000. The experimental result of  $\text{TiO}_2$  nanofluid pressure drop is compared with the Blasius equation for based fluid. It was observed that pressure drop increase with increasing of nanofluid volume concentration and decrease with increasing of nanofluid temperature insignificantly. He found that  $\text{TiO}_2$  is not significantly increased compare to EG fluid. The working temperature of nanofluid will reduce the pressure drop due to the decreasing in nanofluid viscosity.
- 10) Palanisamy et. al [9] observes the heat transfer and the pressure drop of cone helically coiled tube heat exchanger by (Multi wall carbon nano tube) MWCNT/water nanofluids. The MWCNT/water nanofluids at 0.1%, 0.3%, and 0.5% atom volume absorptions were equipped with the calculation of surfactant by using the two-step method. The investigations were showed under the turbulent flow in the Dean number range of  $2200 < De < 4200$ . The tests were attended with tentative Nusselt number is 28%, 52% and 68% higher than water for the nanofluids volume concentration of 0.1%, 0.3% and 0.5% respectively. It is originate that the pressure drop of 0.1%, 0.3% and 0.5% nanofluids are found to be 16%, 30% and 42% respectively more than water.

- 11) Hemasunder Banka et. al. [10] has done a methodical investigation on the shell and tube heat exchanger by forced convective heat transfer to determine flow physical appearance of nano fluids by fluctuating volume fractions and mixed with water, the nano fluids are titanium carbide (TiC), titanium nitride (TiN) and ZnO nanofluid and dissimilar volume concentrations (0.02, 0.04, 0.07 & 0.15%) flowing under turbulent flow conditions. CFD analysis is done on heat exchanger by relating the properties of nano fluid with different volume fractions to obtain temperature distribution, heat transfer coefficient and heat transfer rate. He found that heat transfer coefficient and heat transfer rates are growing by cumulative the volume fractions.
- 12) Jaafar Albadr et. al. [11] has done experimental study on the forced convective heat transfer and flow characteristics of a nanofluid consisting of water and different volume concentrations of Al<sub>2</sub>O<sub>3</sub> nanofluid (0.3–2) % flowing in a horizontal shell and tube heat exchanger counter flow under turbulent flow conditions are investigated. The Al<sub>2</sub>O<sub>3</sub> nanoparticles of about 30 nm diameter are used in the present study. The results show that the convective heat transfer coefficient of nanofluid is slightly higher than that of the base liquid at same mass flow rate and at same inlet temperature. The heat transfer coefficient of the nanofluid increases with an increase in the mass flow rate, also the heat transfer coefficient increases with the increase of the volume concentration of the Al<sub>2</sub>O<sub>3</sub> nanofluid, however increasing the volume concentration cause increase in the viscosity of the nanofluid leading to increase in friction factor.
- 13) Saket A Patel et.al. [12] done CFD analysis of heat transfer enhancement in helical coil heat exchanger by varying helix angle. His attempts are made to enhance the overall heat transfer coefficient in HCHE by varying helix angle. Hot water flows in helical coil and cold water flows in shell side. Three different angles are analysing for that. Optimum helix angle is found out by CFD analysis. Results indicate that at 20 helix angle gives maximum overall heat transfer coefficient about 33% increases compared to 0° angle.
- 14) Jyachandraiah et.al.[13] focus his work on CFD analysis of HCHE by varying different volume flow rates at coil side with constant flow rate at shell side. various flow rate values are 40, 60, 80, 100 and 140 LPH. Result shows that dean number increase in coil side flow rate and the overall heat transfer coefficient increase with increase in flow rate at coil side. The greater effectiveness of 0.80 was obtained at 40 LPH.

#### IV. COMPUTATIONAL FLUID DYNAMICS

Computational fluid dynamics, as the name implies it is a subject that deals with computational approach to fluid dynamics with numerical solution of the equations which bring about the flow of the fluid and although it is also called computational fluid dynamics; it does not just deal with the equations of the fluid flow, it is also generic enough to be able to solve simultaneously together the equations that direct the energy transfer and as well the equations that determine the chemical reaction rates and how the chemical reaction proceeds and mass transfer takes place; all these things can be tackled together in an identical format. So, this outline enables us to deal with a very complex flow circumstances in reasonably fast time, such that for a particular set of conditions, an engineer will be capable to simulate and see how the flow is taking place and what kind of temperature distribution there is and what kind of products are made and where they are formed, so that we can make changes to the parameters that are under his control to modify the way that these things are happening. So, in that case CFD becomes a great tool of design for an engineer.

It is also a great tool for an analysis for an examination of a reactor or equipment which is not functioning well because in typical industrial applications.

#### V. METHODOLOGY

##### A. Pre Processing

CAD Modeling: Creation of CAD Model by by means of CAD modeling tools for making the geometry of the part/assembly of which we want to accomplish FEA. CAD model may be 2D or 3D.

- 1) *Type of Solver*: Pick the solver for the problem from Pressure Based and density based solver.
- 2) *Physical Model*: Choose the required physical model for the problem i.e. laminar, turbulent, energy, multiphase, etc.
- 3) *Material Property*: Choose the Material property of flowing fluid.
- 4) *Boundary Condition*: Define the desired boundary condition for the problem i.e. velocity, mass flow rate, temperature, heat flux etc.

**B. Solution**

- 1) Solution Method: Choose the Solution method to solve the problem i.e. First order, second order.
- 2) Solution Initialization: Initialized the solution to get the initial solution for the problem.
- 3) Run Solution: Run the solution by giving no of iteration for solution to converge.

**C. Post Processing**

For viewing and clarification of result, this can be viewed in various formats like graph, value, animation etc.

**1) Step 1**

CFD analysis of helical coil heat exchanger by using ANSYS 18.2.

- *Pre-processing*: CAD Model: Generation of 3D model by using ANSYS fluent 18.2.

S.No.	Dimensional Parameters	Dimensions
1	Pitch Coil Diameter	86 mm
2	Helical Coil Outer Diameter	16 mm
3	Helical Coil Inner Diameter	12 mm
4	Pitch	26.3 mm
5	Tube Length	235 mm
6	Shell Diameter	110 mm
7	Shell Length	215 mm

Table 1 : Parameters of Geometry of Shell and Helical Coil

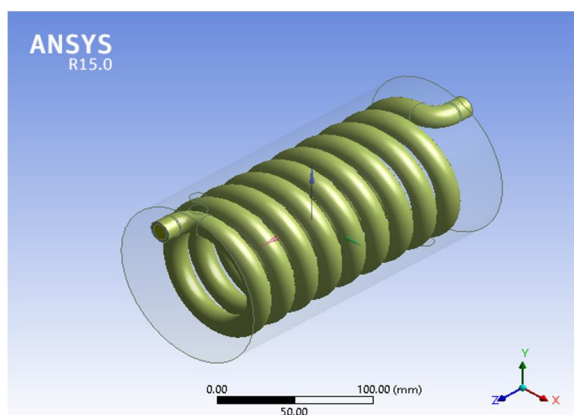


Figure 2 : 3D model of shell and helical coil heat exchanger

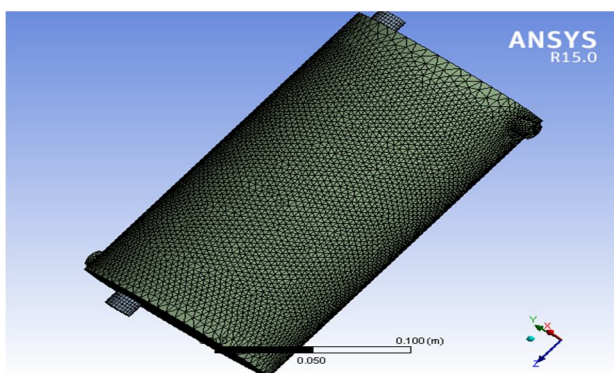


Figure 3: Meshing of Shell and Helical Coil Heat Exchanger

Mesh type	Fine grid mesh
No. of nodes	166306
No. of elements	287633

Table 2 : Shell and Helical Coil Meshing Statistics

2) Step 3

- *Fluent Setup*

After mesh setup generation define the following steps in the ANSYS fluent 18.2.

- Problem Type -3D solid
- Type of Solver – pressure
- Physical Model – viscous k- two equation turbulence model
- Mixture- mixture

3) Step 4

- *Fluid Property*

Type of fluid	Al <sub>2</sub> O <sub>3</sub>
Density (ρ)	3600 kg/m <sup>3</sup>
Viscosity (μ)	0.0001548 kg/m-s
Specific heat (C <sub>p</sub> )	765 J/Kg-K
Thermal conductivity (k)	36 Watt/mK

Table 3: Property of Al<sub>2</sub>O<sub>3</sub> Nanofluid

Type of fluid	Ethylene Glycol
Density (ρ)	1111.4 kg/m <sup>3</sup>
Viscosity (μ)	0.0157 kg/m-s
Specific heat (C <sub>p</sub> )	2415 J/Kg-K
Thermal conductivity (k)	0.252 Watt/mK

Table 4 : Property of Ethylene Glycol

- *Solution*

Solution Method

Pressure - Velocity - Coupling – Scheme - Simple

- Pressure – standard pressure
- Momentum- 2nd order
- Turbulence –kinetic energy 2nd order
- Turbulence dissipation rate 2nd order

- *Solution Initialisation:* Initiate the solution to get the initial solution for the problem.
- *Run Solution:* Run the solution by giving 500 number of iteration for solving the conver.
- *Post Processing:* For viewing and interpret of result, the result can be viewed in various formats like graph, value, animations etc.

## VI. RESULTS & DISCUSSION

- 1) The pressure drop data were collected for the configuration of shell and helical heat exchanger for the Al<sub>2</sub>O<sub>3</sub> nanofluid as ethylene glycol its base.
- 2) CFD computations were done for copper shell and helical heat exchanger.
- 3) Performance parameters adopted for comparison of pressure drop and temperature distribution in all the cases.
- 4) Effect of static pressure on the shell and helical coil heat exchanger for hot fluid when mass flow rate for hot fluid is 0.05 kg/s and for cold fluid is 0.02kg/s.

Case	Fluid	Pressure drop (Pa)
1	Al <sub>2</sub> O <sub>3</sub> Nano fluid	1370

TABLE 5 Effect of static pressure in hot fluid

- 5) Effect of static pressure on the shell and helical coil heat exchanger for cold fluid when mass flow rate for hot fluid is 0.05 kg/s and for cold fluid is 0.02kg/s.

Case	Fluid	Pressure drop (Pa)
1	Al <sub>2</sub> O <sub>3</sub> Nano fluid	1417

TABLE 6 Effect of static pressure in cold fluid.

- 6) Effect of total pressure on the shell and helical coil heat exchanger for hot fluid when mass flow rate for hot fluid is 0.05 kg/s and for cold fluid is 0.02kg/s.

Case	Fluid	Pressure drop (Pa)
1	Al <sub>2</sub> O <sub>3</sub> Nano fluid	1551

TABLE 7 Effect of Total Pressure in hot fluid.

- 7) Effect of total pressure on the shell and helical coil heat exchanger for cold fluid when mass flow rate for hot fluid is 0.05 kg/s and for cold fluid is 0.02kg/s.

Case	Fluid	Pressure drop (Pa)
1	Al <sub>2</sub> O <sub>3</sub> Nano fluid	1654

TABLE 8 Effect of Total Pressure in cold fluid.

- 8) Effect of static temperature on the shell and helical coil heat exchanger for hot fluid when mass flow rate for hot fluid is 0.05 kg/s and for cold fluid is 0.02kg/s.

Case	Fluid	Temperature (K)
1	Al <sub>2</sub> O <sub>3</sub> Nano fluid	343.5

TABLE 9 Effect of static temperature in hot fluid.

- 9) Effect of static temperature on the shell and helical coil heat exchanger for cold fluid when mass flow rate for hot fluid is 0.05 kg/s and for cold fluid is 0.02kg/s.

Case	Fluid	Temperature (K)
1	Al <sub>2</sub> O <sub>3</sub> Nano fluid	344

TABLE 10 Effect of static temperature in cold fluid.

- 10) Effect of total temperature on the shell and helical coil heat exchanger for hot fluid when mass flow rate for hot fluid is 0.05 kg/s and for cold fluid is 0.02kg/s.

Case	Fluid	Temperature (K)
1	Al <sub>2</sub> O <sub>3</sub> Nano fluid	344.1

TABLE 11 Effect of total temperature in hot fluid.



11) Effect of total temperature on the shell and helical coil heat exchanger for cold fluid when mass flow rate for hot fluid is 0.05 kg/s and for cold fluid is 0.02kg/s.

Case	Fluid	Temperature (K)
1	Al <sub>2</sub> O <sub>3</sub> Nano fluid	345

TABLE 12 Effect of total temperature in cold fluid.

12) Effect of static pressure on the shell and helical coil heat exchanger for hot fluid when mass flow rate for hot fluid is 0.02 kg/s and for cold fluid is 0.05kg/s.

Case	Fluid	Pressure drop (Pa)
1	Al <sub>2</sub> O <sub>3</sub> Nano fluid	68

TABLE 12 Effect of static pressure in hot fluid

13) Effect of static pressure on the shell and helical coil heat exchanger for cold fluid when mass flow rate for hot fluid is 0.02 kg/s and for cold fluid is 0.05kg/s.

Case	Fluid	Pressure drop (Pa)
1	Al <sub>2</sub> O <sub>3</sub> Nano fluid	772

TABLE 13 Effect of static pressure in cold fluid.

14) Effect of total pressure on the shell and helical coil heat exchanger for hot fluid when mass flow rate for hot fluid is 0.02 kg/s and for cold fluid is 0.05kg/s.

Case	Fluid	Pressure drop (Pa)
1	Al <sub>2</sub> O <sub>3</sub> Nano fluid	632

TABLE 14 Effect of Total Pressure in hot fluid.

15) Effect of total pressure on the shell and helical coil heat exchanger for cold fluid when mass flow rate for hot fluid is 0.02 kg/s and for cold fluid is 0.05kg/s.

Case	Fluid	Pressure drop (Pa)
1	Al <sub>2</sub> O <sub>3</sub> Nano fluid	857

TABLE 15 Effect of Total Pressure in cold fluid.

16) Effect of static temperature on the shell and helical coil heat exchanger for hot fluid when mass flow rate for hot fluid is 0.02 kg/s and for cold fluid is 0.05kg/s.

Case	Fluid	Temperature (K)
1	Al <sub>2</sub> O <sub>3</sub> Nano fluid	336

TABLE 16 Effect of static temperature in hot fluid.

17) Effect of static temperature on the shell and helical coil heat exchanger for cold fluid when mass flow rate for hot fluid is 0.02 kg/s and for cold fluid is 0.05kg/s.

Case	Fluid	Temperature (K)
1	Al <sub>2</sub> O <sub>3</sub> Nano fluid	321.5

TABLE 17 Effect of static temperature in cold fluid.

18) Effect of total temperature on the shell and helical coil heat exchanger for hot fluid when mass flow rate for hot fluid is 0.02 kg/s and for cold fluid is 0.05kg/s.

Case	Fluid	Temperature (K)
1	Al <sub>2</sub> O <sub>3</sub> Nano fluid	342

TABLE 18 Effect of total temperature in hot fluid.

19) Effect of total temperature on the shell and helical coil heat exchanger for cold fluid when mass flow rate for hot fluid is 0.02 kg/s and for cold fluid is 0.05kg/s.

Case	Fluid	Temperature (K)
1	Al <sub>2</sub> O <sub>3</sub> Nano fluid	329

TABLE 19 Effect of total temperature in cold fluid.

a) Case-1 Al<sub>2</sub>O<sub>3</sub> nanofluid is used as ethylene glycol as its base fluid in shell and helical coil, Static Pressure drop by using hot fluid when mass flow rate for cold fluid is 0.02 m/s and mass flow rate for hot fluid is 0.05m/s.

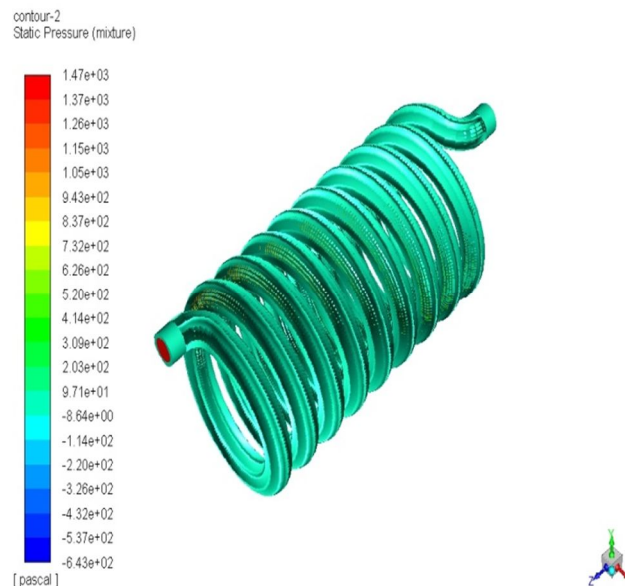


Figure-4 Static pressure in shell and helical coil for hot fluid

The maximum pressure drop obtain is 1370 Pa. Initially at the bottom section of the coil the pressure drop is 97.1 Pa and at the middle portion pressure drop is 348 Pa, from lower to middle portion of coil there is increase in pressure drop of 250.9 Pa. From middle to top portion of coil there is continuously increase in pressure drop from 348 Pa to 1370 Pa and mass flow rate for cold fluid is 0.02 m/s and mass flow rate for hot fluid is 0.05m/s.

- b) Case-2  $Al_2O_3$  nanofluid is used as ethylene glycol as its base fluid in shell and helical coil, Static Pressure drop by using cold fluid when mass flow rate for cold fluid is 0.02 m/s and mass flow rate for hot fluid is 0.05m/s.

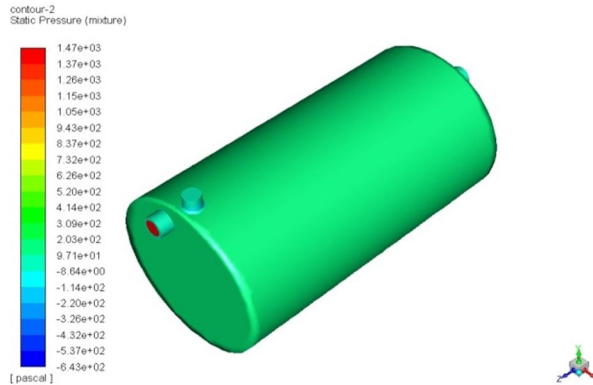


Figure-5 Static pressure in shell and helical coil for cold fluid

- c) Case-3  $Al_2O_3$  nanofluid is used as ethylene glycol as its base fluid in shell and helical coil, Total Pressure drop by using hot fluid when mass flow rate for cold fluid is 0.02 m/s and mass flow rate for hot fluid is 0.05m/s.

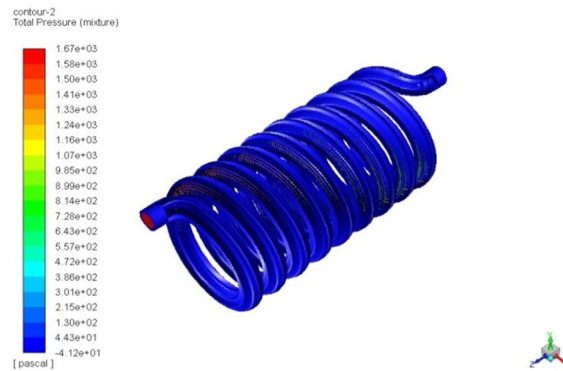


Figure-6 Total pressure in shell and helical coil for hot fluid

- d) Case-4  $Al_2O_3$  nanofluid is used as ethylene glycol as its base fluid in shell and helical coil, Total Pressure drop by using cold fluid when mass flow rate for cold fluid is 0.02 m/s and mass flow rate for hot fluid is 0.05m/s.

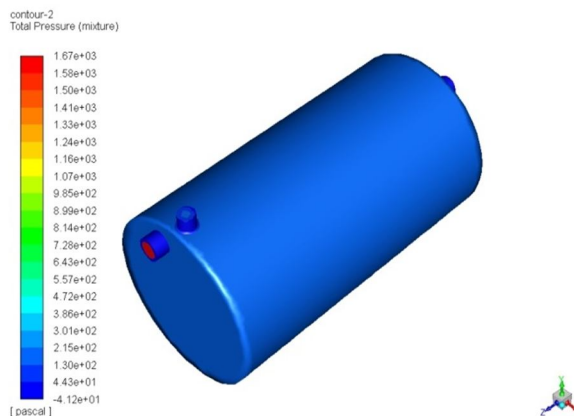


Figure-7 Total pressure in shell and helical coil for cold fluid

- e) Case-5  $Al_2O_3$  nanofluid is used as ethylene glycol as its base fluid in shell and helical coil, Static Temperature by using hot fluid when mass flow rate for cold fluid is 0.02 m/s and mass flow rate for hot fluid is 0.05m/s.

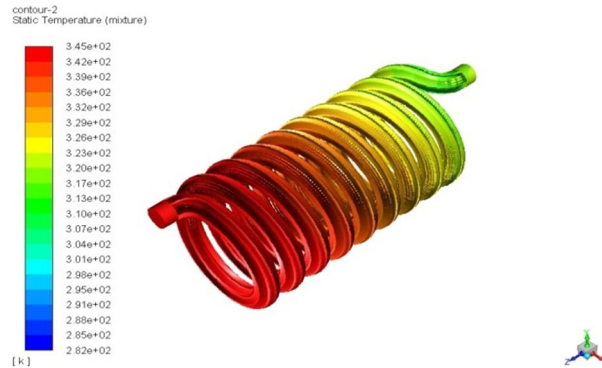


Figure-8 Static Temperature in shell and helical coil for hot fluid

- f) Case-6  $Al_2O_3$  nanofluid is used as ethylene glycol as its base fluid in shell and helical coil, Static Temperature by using cold fluid when mass flow rate for cold fluid is 0.02 m/s and mass flow rate for hot fluid is 0.05m/s.

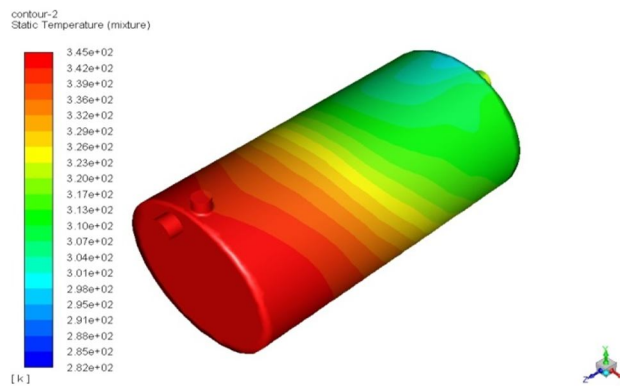


Figure-9 Static Temperature in shell and helical coil for cold fluid

- g) Case-7  $Al_2O_3$  nanofluid is used as ethylene glycol as its base fluid in shell and helical coil, Total Temperature by using hot fluid when mass flow rate for cold fluid is 0.02 m/s and mass flow rate for hot fluid is 0.05m/s.

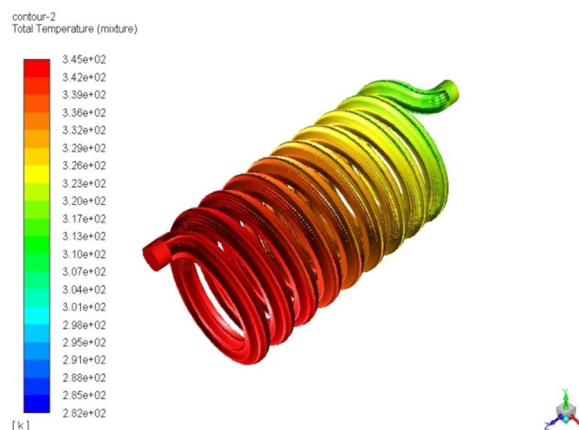


Figure-10 Total Temperature in shell and helical coil for hot fluid



h) Case-8  $Al_2O_3$  nanofluid is used as ethylene glycol as its base fluid in shell and helical coil, Total Temperature by using cold fluid when mass flow rate for cold fluid is 0.02 m/s and mass flow rate for hot fluid is 0.05m/s.

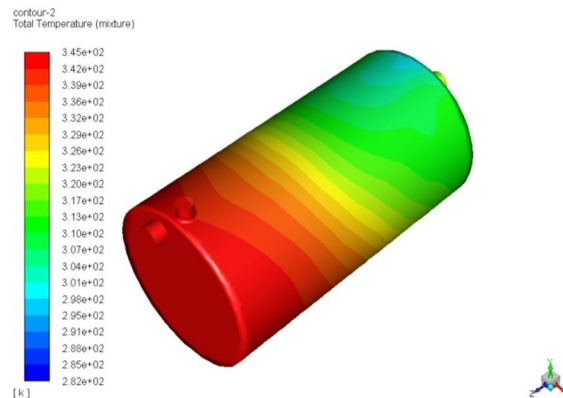


Figure-11 Total Temperature in shell and helical coil for cold fluid

i) Case-9  $Al_2O_3$  nanofluid is used as ethylene glycol as its base fluid in shell and helical coil, static pressure by using hot fluid when mass flow rate for cold fluid is 0.05 m/s and mass flow rate for hot fluid is 0.02m/s.



Figure-12 Static pressure in shell and helical coil for hot fluid

j) Case-10  $Al_2O_3$  nanofluid is used as ethylene glycol as its base fluid in shell and helical coil, Static pressure by using cold fluid when mass flow rate for cold fluid is 0.05 m/s and mass flow rate for hot fluid is 0.02m/s.

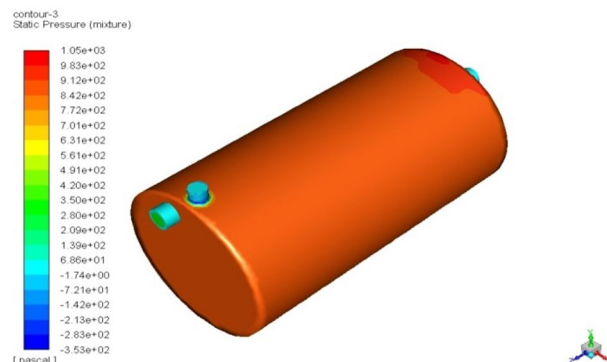


Figure-13 Static Pressure in shell and helical coil for cold fluid

k) *Case-11*  $Al_2O_3$  nanofluid is used as ethylene glycol as its base fluid in shell and helical coil, Total Pressure drop by using hot fluid when mass flow rate for cold fluid is 0.05 m/s and mass flow rate for hot fluid is 0.02m/s.



Figure 14 Total pressure in shell and helical coil for hot fluid

l) *Case-12*  $Al_2O_3$  nanofluid is used as ethylene glycol as its base fluid in shell and helical coil, Total Pressure drop by using cold fluid when mass flow rate for cold fluid is 0.05 m/s and mass flow rate for hot fluid is 0.02 m/s

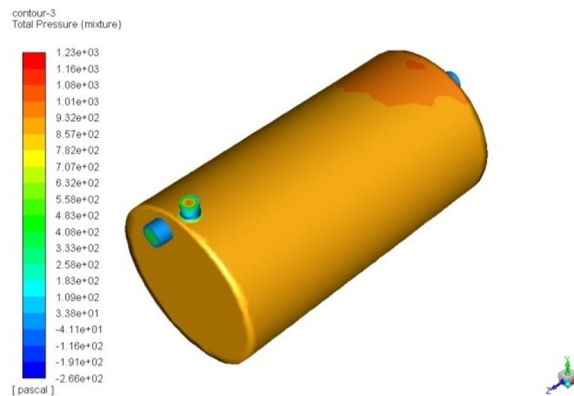


Figure 15 Total pressure in shell and helical coil for cold fluid

m) *Case-13*  $Al_2O_3$  nanofluid is used as ethylene glycol as its base fluid in shell and helical coil, TotalTemperature by using hot fluid when mass flow rate for cold fluid is 0.05 m/s and mass flow rate for hot fluid is 0.02m/s.

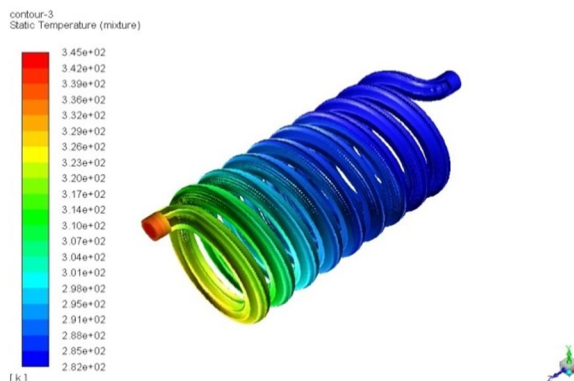


Figure 16 Static Temperature in shell and helical coil for hot fluid

- n) *Case-14*  $Al_2O_3$  nanofluid is used as ethylene glycol as its base fluid in shell and helical coil, Static Temperature by using hot fluid when mass flow rate for cold fluid is 0.05 m/s and mass flow rate for hot fluid is 0.02m/s.

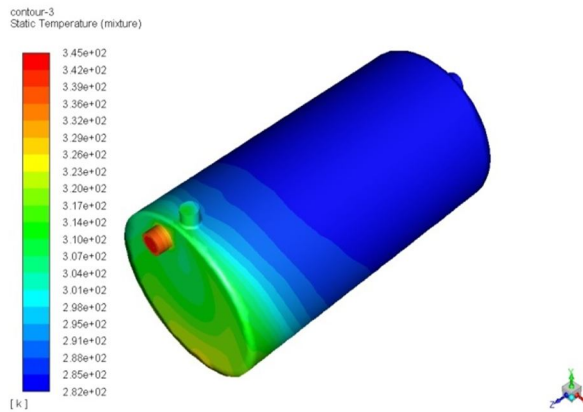


Figure 17 Static Temperature in shell and helical coil for cold fluid

- o) *Case-15*  $Al_2O_3$  nanofluid is used as ethylene glycol as its base fluid in shell and helical coil, Static Temperature by using cold fluid when mass flow rate for cold fluid is 0.05 m/s and mass flow rate for hot fluid is 0.02m/s.

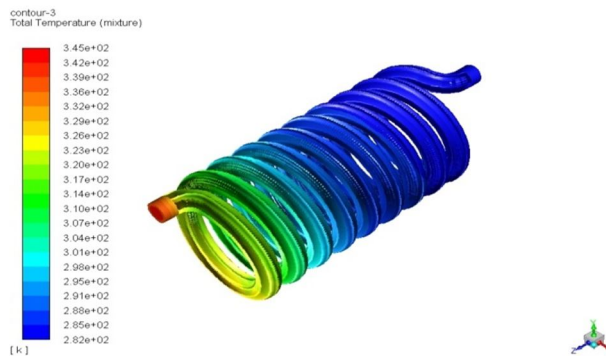


Figure 18 Total Temperature in shell and helical coil for hot fluid

- p) *Case-16*  $Al_2O_3$  nanofluid is used as ethylene glycol as its base fluid in shell and helical coil, TotalTemperature by using cold fluid when mass flow rate for cold fluid is 0.05 m/s and mass flow rate for hot fluid is 0.02m/s.

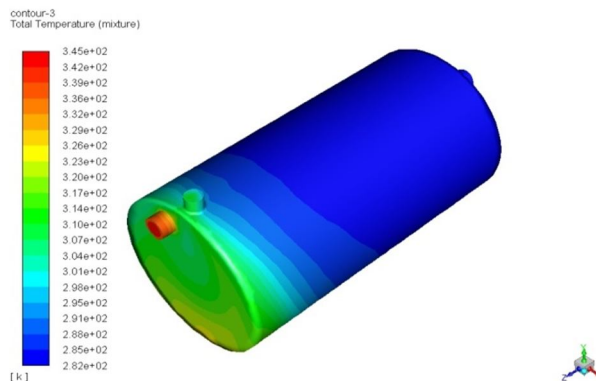


Figure 19 Total Temperature in shell and helical coil for hot fluid

Properties	Al <sub>2</sub> O <sub>3</sub> Nanofluid using ethylene glycol as its base
Max static pressure on the shell and helical coil heat exchanger for hot fluid when mass flow rate for hot fluid is 0.05 kg/s and for cold fluid is 0.02kg/s.	1370 Pa
Max static pressure on the shell and helical coil heat exchanger for cold fluid when mass flow rate for hot fluid is 0.05 kg/s and for cold fluid is 0.02kg/s.	1417 Pa
Max total pressure on the shell and helical coil heat exchanger for hot fluid when mass flow rate for hot fluid is 0.05 kg/s and for cold fluid is 0.02kg/s.	1551 Pa
Max total pressure on the shell and helical coil heat exchanger for cold fluid when mass flow rate for hot fluid is 0.05 kg/s and for cold fluid is 0.02kg/s.	1654 Pa
Max static temperature on the shell and helical coil heat exchanger for hot fluid when mass flow rate for hot fluid is 0.05 kg/s and for cold fluid is 0.02kg/s.	343.5 K
Max static temperature on the shell and helical coil heat exchanger for cold fluid when mass flow rate for hot fluid is 0.05 kg/s and for cold fluid is 0.02kg/s.	344 K
Max total temperature on the shell and helical coil heat exchanger for hot fluid when mass flow rate for hot fluid is 0.05 kg/s and for cold fluid is 0.02kg/s.	344.1 K
Max total temperature on the shell and helical coil heat exchanger for cold fluid when mass flow rate for hot fluid is 0.05 kg/s and for cold fluid is 0.02kg/s.	345 K
Max static pressure on the shell and helical coil heat exchanger for hot fluid when mass flow rate for hot fluid is 0.02 kg/s and for cold fluid is 0.05kg/s.	68 Pa
Max static pressure on the shell and helical coil heat exchanger for cold fluid when mass flow rate for hot fluid is 0.02 kg/s and for cold fluid is 0.05kg/s.	772 Pa
Max static pressure on the shell and helical coil heat exchanger for cold fluid when mass flow rate for hot fluid is 0.02 kg/s and for cold fluid is 0.05kg/s.	632 Pa
Max total pressure on the shell and helical coil heat exchanger for cold fluid when mass flow rate for hot fluid is 0.02 kg/s and for cold fluid is 0.05kg/s.	857 Pa
Max static temperature on the shell and helical coil heat exchanger for hot fluid when mass flow rate for hot fluid is 0.02 kg/s and for cold fluid is 0.05kg/s.	336 K
Max static temperature on the shell and helical coil heat exchanger for cold fluid when mass flow rate for hot fluid is 0.02 kg/s and for cold fluid is 0.05kg/s.	321.5
Max total temperature on the shell and helical coil heat exchanger for hot fluid when mass flow rate for hot fluid is 0.02 kg/s and for cold fluid is 0.05kg/s.	342
Max total temperature on the shell and helical coil heat exchanger for cold fluid when mass flow rate for hot fluid is 0.02 kg/s and for cold fluid is 0.05kg/s.	329

Table No.20 CFD Analysis results



## VII. CONCLUSION

In this paper, analytical investigations are done on the shell and helical coil heat exchanger, to determine pressure drop and temperature distribution of a ethylene glycol as a base fluid and  $\text{Al}_2\text{O}_3$  as a nanofluid on shell and helical coil flowing under laminar flow conditions. By observing the CFD analysis results, the pressure drop is more in hot fluid of  $\text{Al}_2\text{O}_3$  nanofluid with water as a base fluid in shell and helical coil heat exchanger.

## REFERENCES

- [1] Pranita Bichkar\*, Ojas Dandgaval, Pranita Dalvi, Rhushabh Godase and Tapobrata Dey\* 2018, "Study of Shell and Tube Heat Exchanger with the effect of types of baffles." Elsevier Procedia Manufacturing 20 (2018) 195–200.
- [2] Y.G. Lei, Y.L. He, R. Li, Y.F. Gao, Effects of baffle inclination angle on flow and heat transfer of a heat exchanger with helical baffles, Chem. Eng. Process. 47 (12) (2008) 2336–2345.
- [3] Vidula Vishnu Suryawanshi, Nikhil Ghodake, Onkar Patil, Sham Lomate, Shital.G.Nerkar, 2021, "Design and analysis of Helical coil Heat Exchanger", International Journal of Engineering Research in Mechanical and Civil Engineering volume 6 Issue 8.
- [4] Vishal Momale, Aditya Wankhade, Prajakta Kachare, 2019, " Performance analysis of conical helical tube heat exchanger with straight and conical shell using cfd", Journal of Emerging Technologies and Innovative Research, Volume 6, Issue 1.
- [5] M. Ali, "Experimental investigation of natural convection from vertical helical coiled tubes," International Journal of Heat and mass transfer, volume 37, pages 665-671, 1994.
- [6] R.K. Patil, R.W. Shende and P.K. Ghosh, "Designing a helical- coil heat exchanger," Chemical Engineering, pages 85-88, 1982.
- [7] N. Ghorbani, H. Taherian, M. Gorji and H. Mirgolbabaei , "Experimental study of mixed convection heat transfer in vertical helically coiled tube heat exchangers," Experimental Thermal and Fluid Science, volume 34, issue 7, Pages 900-905, oct 2010
- [8] Sunil Kumar, Dr. DK Gupta 2020, "Optimising Design and analysis on the Helically Coiled Tube Heat Exchanger carrying Nanofluids by providing fins" Smart Moves Journal IJO Science, Volume 6, Page 23-31.
- [9] K. Abdul Hamid, W. H. Azmi, Rizalman Mamat, N. A. Usri and Gohalamhassan Najafi 2015, "Effect of Titanium Oxide Nanofluid Concentration on Pressure drop" ARPN Journal of Engineering and Applied Sciences, Volume 10, Page 7815-7820.
- [10] Palanisamy, K. P.C. Mukesh Kumar 2019, "Experimental investigation on convective heat transfer and pressure drop of cone helically coiled tube heat exchanger using carbon nanotubes/ water nanofluids", Elsevier – Heliyon 5.
- [11] Hemasunder Banka, Dr. V. Vikram Reddy, M. Radhika 2016, "CFD Analysis of Shell and Tube Heat Exchanger using Titanium Carbide, Titanium Nitride and Zinc Oxide Nanofluid" International Journal of Innovations in Engineering and Technology, Special Issue, Page 315-322.
- [12] Jaafar Albadr, Satinder Tayal, Mushtaq Alasadi 2013 "Heat transfer through heat exchanger using  $\text{Al}_2\text{O}_3$  nanofluid at different concentrations" Elsevier, Volume-1, Page 38-44.
- [13] Shiva Kumar, K Vasudev Karanth 2013, "Numerical analysis of a Helical Coiled Heat Exchanger using CFD" International Journal of Thermal Technologies, Volume 3, Page 126-130.
- [14] M. Balachandaran 2015, "Experimental and CFD study of a Helical Coil Heat Exchanger using Water as Fluid" International Journal of Mechanical and Production Engineering, Volume 3, Page 87-91.
- [15] Vinita Sisodiya, Dr. Ankur Geete 2016 "Heat Transfer analysis of Helical coil Heat Exchanger with  $\text{Al}_2\text{O}_3$  Nanofluid" International Journal of Engineering and Technology, Volume 3, Page 366-370.
- [16] Fakoor-Pakdaman, M.A. Akhavan- Behabadi, P. Razi 2013, "An empirical study on the pressure drop characteristics of Nanofluid flow inside helically coiled tubes" International Journal of Thermal Sciences, Volume 65, Page 206-213.
- [17] Ashkan Alimoradi 2017, "Study of thermal effectiveness and its relation with NTU in Shell and helically coiled tube heat exchanger" Elsevier Case Studies in Thermal Engineering, Volume 9, Page 100–107.
- [18] Tushar A. Sinha, Amit Kumar, Nikhilesh Bhargava and Soumya S Mallick 2014, "An Experimental Investigation into the Thermal Properties of Nano Fluid" Applied Mechanical Engineering, Volume 4, Issue 1.
- [19] Jayakumar J. S., S.M. Mahajani, J.C. Mandal, P.K. Vijayan, Rohidas Bhoi, 2008, "Experimental and CFD estimation of heat transfer in helically coiled heat exchangers" Chemical Engineering Research and Design, Volume 86, Page 221-232.
- [20] Amar Raj Singh Suri, Anil Kumar, Rajesh Maithani 2017, "Effect of square wings in multiple square perforated twisted tapes on fluid flow and heat transfer of heat exchanger tube" Elsevier Case Studies in Thermal Engineering, Volume 10, Page 28-43.
- [21] Ram Kishan, Devendra Singh, Ajay Kumar Sharma 2020, "CFD Analysis of Heat Exchanger using Ansys Fluent", International Journal of Mechanical Engineering and Technology", Volume 11, Page 1-9.
- [22] B. Chinna Ankanna, B. Sidda Reddy 2014, "Performance Analysis of Fabricated Helical Coil Heat Exchanger", International Journal of Engineering & Research, Volume 3, Page 33-39.
- [23] Changnian Chen, Jitian Han and Li Shao 2017 "The characteristics of Pressure Drop and Heat transfer of Coils Used in Solar Collectors" Elsevier, Volume-7, Page 351-357.
- [24] Baghel Rakesh & Upadhayaya Sushant. Effect of coil diameter in archimedean spiral coil. International journal of applied engineering research 2013; Vol. 8: pp. 2151- 2156.
- [25] Ankanna Chinna B, Reddy Sidda B. Performance analysis of fabricated helical coil heat exchanger. International journal of engineering research 2014; Vol. 3: pp.33-39.
- [26] Pramod Deshmukh, Vikram D Patil, Prof. Baviskar Devakant 2016 "CFD analysis of heat transfer in helical coil tube in tube heat exchanger" International Journal of Innovation in Engineering Research and Technology, Volume 3, Issue 1.
- [27] A K Singh 2008 "Thermal Conductivity of Nano fluids" Defence Science Journal, Volume 58, Page 600-607.



- [29] Amol Bari, Hemant Bhutte, Nirmal Waykole, Ajeet Yadav, Swapnil Mane 2016 "Study of tube in tube concentric parallel flow heat exchanger using nanofluid" International Journal of Advanced Research, Volume 4, Page 1376-1383.
- [30] V. Murali Krishna 2016 "Heat Transfer Enhancement by using ZnO Water Nanofluid in a Concentric Tube Heat Exchanger under Forced Convection Conditions" International Journal of Innovations in Engineering and Technology, Volume-7, Page 177-184.
- [31] Prof. Alpesh Mehta, Dinesh k Tantiya, Nilesh M Jha, Nimit M Patel 2012 "Heat Exchanger using Nano Fluid" International Journal of Advanced Engineering Technology, Volume 3, Page 49-54.
- [32] Kevin Kunnassery, Rishabh Singh, Sameer Jackeray 2017 "Experimental analysis of helical coil heat exchanger by using different compositions of nano fluids" International Journal of Innovative and Emerging Research in Engineering, Volume-4, Page 219-229.
- [33] Vishwas M. Palve, Prof. Rajesh V. Kale 2015 "Computational analysis of helical coil Heat exchanger for Temperature and Pressure drop" International Research Journal of Engineering and Technology, Volume-2, Page 162-166.
- [34] Amitkumar S. Puttewar, A.M. Andhare 2015 "Design and thermal evaluation of Shell and Helical coil Heat exchanger" International Journal of Research in Engineering and Technology, Volume-4, Page 416-423.



10.22214/IJRASET



45.98



IMPACT FACTOR:  
7.129



IMPACT FACTOR:  
7.429



# INTERNATIONAL JOURNAL FOR RESEARCH

IN APPLIED SCIENCE & ENGINEERING TECHNOLOGY

Call : 08813907089  (24\*7 Support on Whatsapp)