



IJRASET

International Journal For Research in
Applied Science and Engineering Technology



INTERNATIONAL JOURNAL FOR RESEARCH

IN APPLIED SCIENCE & ENGINEERING TECHNOLOGY

Volume: 11 **Issue:** V **Month of publication:** May 2023

DOI: <https://doi.org/10.22214/ijraset.2023.52926>

www.ijraset.com

Call:  08813907089

E-mail ID: ijraset@gmail.com

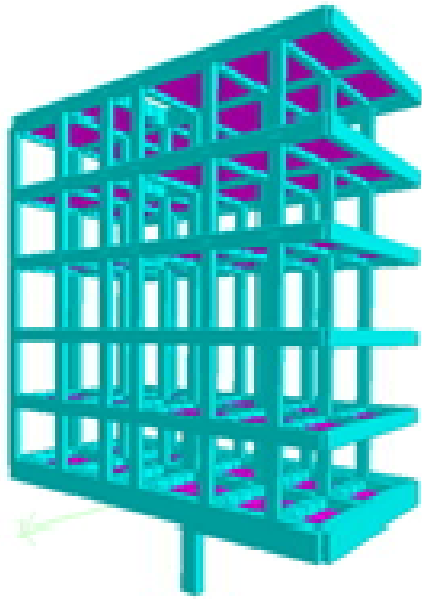


Fig. G+5 Mono-column structure

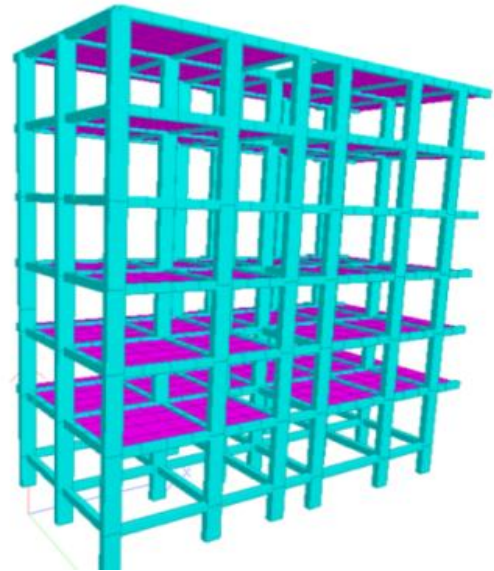


Fig. G+5 Multi-column structure

II. LITERATURE REVIEW

Dr. S.G. Makarande, Mr. Jayant S. Ramtekeet.al.(2019) “A Review On Comparative Study And Analysis Of A Conventional Multi-Storey Building And A Single Column Building” The comparative study and analysis of RCC frame structure supported on single column and multicolumn is done in this project. Design and analysis of structure is done by using STAAD Pro software G+4 building is designed.[1]

Madireddy Satyanarayana (2016) “Design of Multi Storey Building Resting on Single Column” In this paper he studied to analyse and design of multi-storey building rests on the single column by using the different IS code. First the layout plan of the building is drawn by using AUTO CAD.

This multistorey building consists of ground floor plus five floors. The each floor consists of one house and the separate staircase is provided. The planning of building is done as per Indian standard code provisions. From this research paper it is concluded that limit state of design is used.

The author had done the design aspects of the structure manually and by using software. He used code provision of the SP 16 and SP 34 (design aids for the concrete and detailing) [2]

EK Mohanraj et.al. (2002) “Analysis and Design of an Office Building with Mono Column” In this paper analysis and design of single column, satisfies all the required stability.

Ring beams and inclined beams are provided to reduce the cantilever span of beam. They consider maximum space utilization provides maximum serviceability. [3]

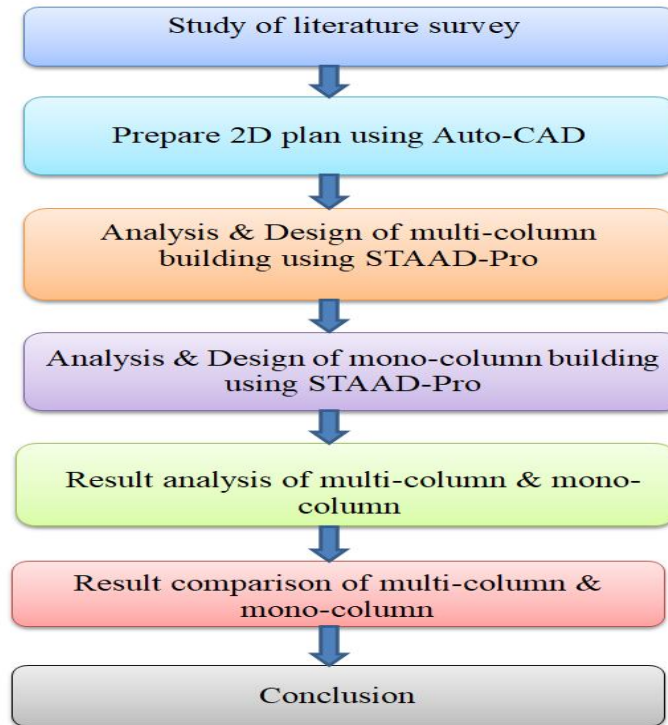
T.Subramani (2019) “Design And Analysis of Mono Column Using STAAD Pro” In this paper design and layout of single column building at a site of 190m² in Salem Autocad was used for drawing the plan and the structure was analysed by using STAAD Pro and checked manual calculations. Also studied the lateral displacement of building [4]

Ankur Pandey, Vaibhav Singh et.al.(2018), “Mono Column Single Storey Structural System Using Composite Material” This paper presents the rapid growth in population and the scarcity of land tends to development of construction technology and high rise building the single column building compares with the structure with regular column. [5]

III. OBJECTIVE

- 1) To find out the various design parameters acting upon the cantilever beams and structures.
- 2) To analyse and design G+ 5 storied structure in STAAD Pro Software.
- 3) To compare analysis between the mono-column and multi-column structure.

IV. METHODOLOGY



V. COMPARISION POINTS

A. Axial Load

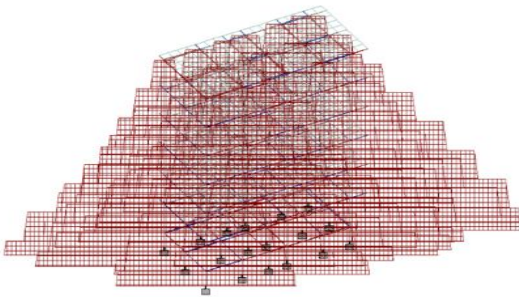


Fig.1 Axial Force On Multicolumn

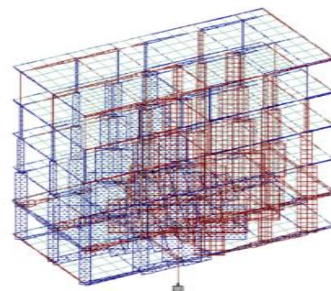


Fig.2 Axial Force On Mono Column

B. Torsion

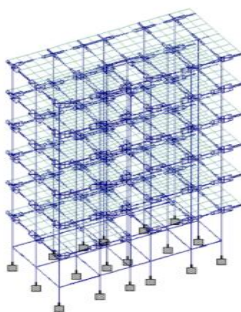


Fig.3 Torsion On Multicolumn

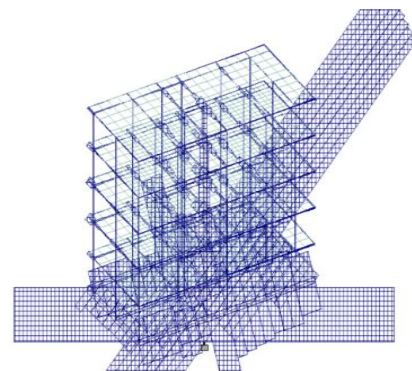


Fig.4 Torsion On Monocolumn

C. Bending moment (y direction)

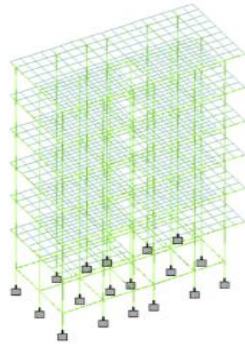


Fig.5 Bending Moment On Multicolumn (Y Direction)

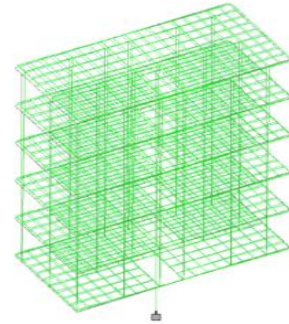


Fig.6 Bending Moment On Monocolumn (Y Direction)

D. Beam stress

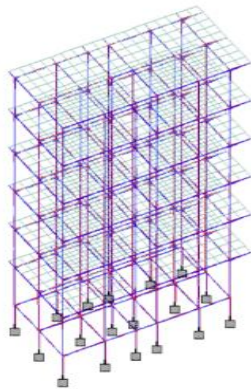


Fig.7 Beam Stress on Multicolumn

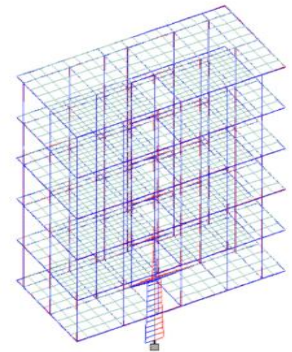


Fig.8 Beam Stress On Monocolumn

E. Deflection

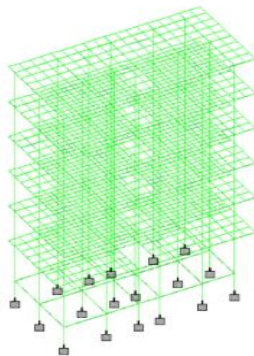


Fig.9 Deflection On Multicolumn

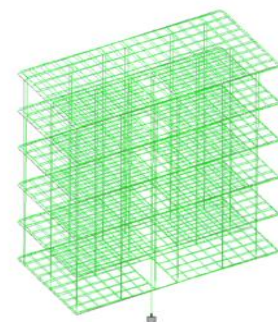


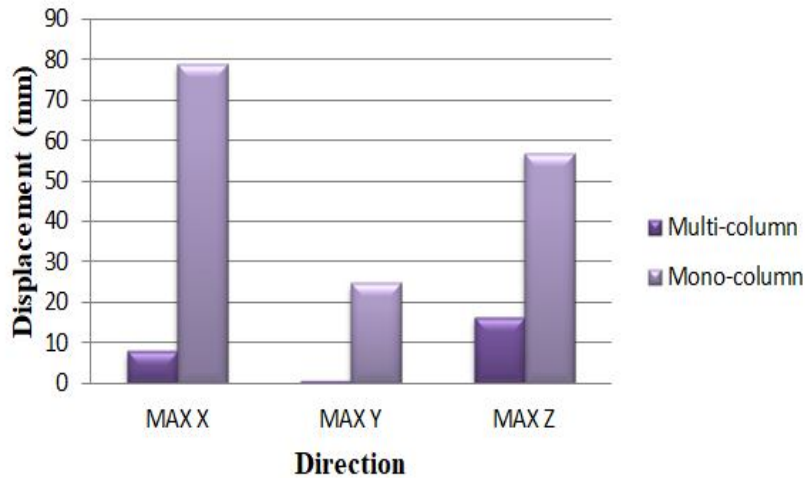
Fig.10 Deflection On Monocolumn

F. Nodal Displacement

In STAAD.Pro, nodal displacement refers to the movement or displacement of a node (a point where members of a structure are connected) in a three-dimensional space. Nodal displacements are essential for understanding the structural behaviour, deformation, and stability of a system under applied loads.

	Multi-column(mm)	Mono-column(mm)	% increase
Max X	8.014	79.026	89.86
Max Y	0.823	24.669	96.66
Max Z	16.293	56.981	71.40

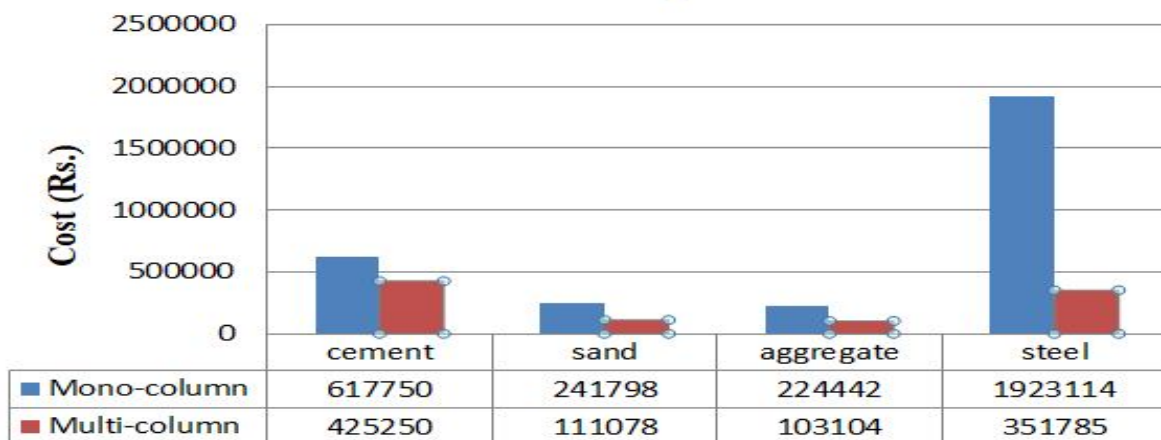
Nodal Displacement



G. Economic Comparison

Content	Rate (Rs.)	Multi-column		Mono-column	
		Quantity	Amount (Rs.)	Quantity	Amount (Rs.)
Cement	350/bag	1215	4,25,250	1765	6,17,750
Sand	1689/m ³	65.766	1,11,078	143.16	2,41,798
Aggregate	900/m ³	114.5615	1,03,104	249.38	2,24,442
Steel	66500/tonne	5.29	3,51,785	28.919	19,23,114
		Total	991217	Total	3007104

Economical Comparison





VI. CONCLUSION

The present project presented the idea for using the advanced structural tool STAAD Pro to solve complicated engineering problems with great ease and in very less time. It has been revealed that the load combinations involving wind forces were critical amongst all combinations. Hence the design was carried out for those combinations.

- 1) The deflection of multi-column building is 0.243mm and deflection of Mono-column building is 5.679mm which is under permissible limit.
- 2) The cost of mono-column building is 30, 07,104 and multi-column is 9, 91,217. Hence cost of mono-column structure is three times greater than the cost of multi-column structure.
- 3) The area of mono-column & multi-column are 2.2 m² & 0.18 m² (single column area) respectively.
- 4) Area of tensile steel required for mono-column is 8633mm² & for multi-column is 1440mm² (single column Ast.).

REFERANACES

- [1] Dr. S.G. Makarande, Mr. Jayant S. Ramteke, Mr. M. R. Nikhar, Mr. G. D. Dhawale "A Review On Comparative Study And Analysis Of A Conventional Multi-Storey Building And A Single Column Building" Journal of Emerging Technologies and Innovative Research. Vol. 6 May 2019
- [2] Madireddy Satyanarayana (2016) "Design Of Multi Storey Building Resting On Single Column" International Journal Of Research In Engineering and Technology vol.5 March 2016.
- [3] EK Mohanraj, Ahmad S.N. Sankar A.G. "Analysis And Design Of An Office Building With Mono Column" 27 th conference Singapore concrete Institute. 2002
- [4] T.Subramani, S. Priyanka, E. Sahul Hameeth, P. Shanmuga Subramani, K.R.Shuresh (2019) "Design And Analysis Of Mono Column Using STAAD Pro" Intenational Journal Of Application or innovation in engineering and management vol.8 march 2019
- [5] Ankur Pandey, Vaibhav Singh, Gaurav Awasthi, "Mono Column Single Storey Structural System Using Composite Material" IAETSD Journal For Advanced Research In Applied Sciences vol.5 April 2018



10.22214/IJRASET



45.98



IMPACT FACTOR:
7.129



IMPACT FACTOR:
7.429



INTERNATIONAL JOURNAL FOR RESEARCH

IN APPLIED SCIENCE & ENGINEERING TECHNOLOGY

Call : 08813907089  (24*7 Support on Whatsapp)