



IJRASET

International Journal For Research in
Applied Science and Engineering Technology



INTERNATIONAL JOURNAL FOR RESEARCH

IN APPLIED SCIENCE & ENGINEERING TECHNOLOGY

Volume: 10 **Issue:** VIII **Month of publication:** August 2022

DOI: <https://doi.org/10.22214/ijraset.2022.46219>

www.ijraset.com

Call:  08813907089

E-mail ID: ijraset@gmail.com

Cyberbullying Detection in social media Using Supervised ML & NLP Techniques

Anuj Patil¹, Anklesh Patil², Jivan Devhare³

^{1, 2, 3}Smt. Kashibai Navale College Of Engineering, Sinhgad Institute, Vadgaov Bk., Pune 411 041, Maharashtra, India.

Abstract: From the day internet came into existence, the era of social networking sprouted. In the beginning, no one may have thought the internet would be a host of numerous amazing services the social networking. Today we can say that online applications and social networking websites have become a non-separable part of one's life. Many people from diverse age groups spend hours daily on such websites. Despite thoughtlet is emotionally connected through media, these facilities bring along big threats with them such as cyber-attacks, which includes include lying. As social networking sites are increasing, cyberbullying is increasing day by day. To identify word similarities in the tweets made by bullies and make use of machine learning and can develop an ML model that automatically detects social media bullying actions. However, many social media bullying detection techniques have been implemented, but many of them were textual based. Under this background and motivation, it can help to prevent the happen of cyberbullying if we can develop relevant techniques to discover cyberbullying in social media. A machine learning model is proposed to detect and prevent bullying on Twitter. Naïve Bayes is used for training and testing social media bullying content.

I. INTRODUCTION

A. Overview

Online social networking sites like Twitter, Facebook, Instagram, and some online social networking companies have become extremely popular in recent years. People spend a lot of time in OSN making friends with people they are familiar with or interested in. Twitter, founded in 2006, has become one of the most popular microblogging service sites. Around 200 million users create around 400 million new tweets a day for spam growth. Twitter spam, known as unsolicited tweets containing malicious links that the non-stop victims to external sites containing the spread of malware, spreading malicious links, etc., hit not only more legitimate users but also the whole platform Consider the example because during the election of the Australian Prime Minister in 2013, a notice confirming that his Twitter account had been hacked. Many of his followers have received direct spam messages containing malicious links. The ability to order useful information is essential for the academic and industrial world to discover hidden ideas and predict trends on Twitter. However, spam generates a lot of noise on Twitter. To detect spam automatically, researchers applied machine learning algorithms to make spam detection a classification problem. Ordering a tweet broadcast instead of a Twitter user as spam or non-spam is more realistic in the real world

B. Motivation

- 1) The system reports the impact of the data-related factors, such as spam to nonspam ratio, training data size, and data sampling, to the detection performance.
- 2) System extracts 12 lightweight features for streaming cyberbullying detection
- 3) System creates a big ground truth for the research on cyberbullying detection.
- 4) System investigates machine learning algorithms to build up the tweet spam detection model.

II. RELATED WORK

- 1) F. Benevenuto, G. Magno, T. Rodrigues, and V. Almeida [1] in this paper, we consider the problem of detecting spammers on Twitter. First, we collect a large set of Twitter data which includes over 54 million users, 1.9 billion connections and almost 1.8 billion tweets. Use of tweets related to three famous trend themes of 2009, we build a great label Collection of users, manually classified in spammers and not spammers. So we identify a series of features Related to the content of the tweet and the social behavior of the user that could potentially be used to detect spammers. He used these features as a machine learning attributes process to classify users as spammers or no spammers. Our strategy manages to detect a large part of the spammers while only a small percentage of non-spammers are incorrectly classified about 70 of spammers and 96. Spammers have not been classified correctly. Also, our results highlight the most important attributes for spam detection on Twitter.

2) G. Biau [2] Random Forest is a scheme proposed by Leo Breiman in the 2000s to build a predictor Set with a series of decision trees that grow in subspaces of randomly selected data. Despite growing interest and practical use, there has been little exploration of the statistical properties of Random forests, and little is known about the mathematical forces that drive the algorithm. In this paper, we offer an in-depth analysis of a random forest model suggested by Breiman (2004), which is awfully close to the original algorithm. We show that the procedure is consistent, and it adapts itself to scarcity, in the sense that its rate of convergence depends only on the number of forts characteristics and not on the number of noise variables present. • M. Bishop [3] the work reported in this summary is concentrated. Mainly on the significant theoretical and experimental. Developments that have advanced the state-of-the-art Automatic model recognition and automatic learning. The automatic recognition of the models is the identification and Assignment of pattern classes for machines. The models presented for identification can be visual, Oral, or electromagnetic. It is usually done what the heart of the recognition of more realistic models. The problems are the use of "typical patterns" or "learning" Observations "to determine the decision procedure. Used by the car; Thus, the study of the automatic. The recognition of the model inevitably involves the study of automatic learning. • Chen, J. Zhang, X. Chen, Y. Xiang, and W. Zhou Twitter has changed the mode of communication receiving people's daily lives in recent years. Meanwhile, Due to the popularity of Twitter, it has become homes the main objective. For spamming activities. To stop spammers, Twitter is using Google Safe Browsing to detect and block spam links. Although blacklists can block malicious URL-embedded tweets, their delay in time hinders the ability to protect users in real time so, researchers start to apply different machines learning algorithms to detect spam from Twitter. However, there is no comprehensive evaluation of the performance of each algorithm. To detect spam from Twitter in real-time due to the lack of large size the fundamental truth. To carry out a thorough evaluation, we have collected a large data set of over 600 million publictweets. More labeled about 6.5 million tweets of spam and 12 light extract Features that can be used for online tracking. Furthermore, we conducted a series of experiments in six machine learning algorithms in various conditions to improve understanding its effectiveness and weakness for timely Twitter Spam detection we will make our data set labeled for researchers. Those interested in validating or expanding our work. • M. Egele, G. Stringhini, C.

III. OPEN ISSUES

A. No Such System

Cyberbullying incidents are increasing day by day as technology rolls out. Many cyberbullying incidents are reported by companies each year. The existing system does not effectively classify and predict the tweets which are presented on the social media

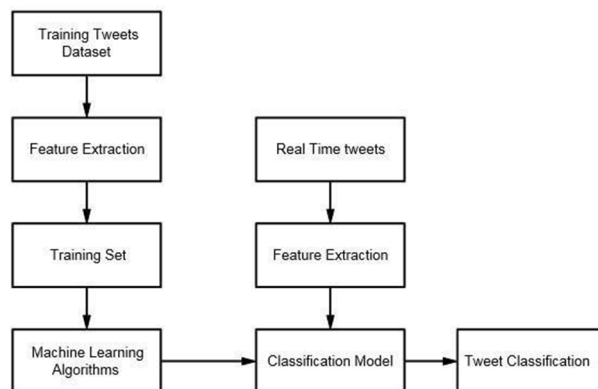
B. Disadvantages

- 1) Does not be Efficient for handling a large volume of data.
- 2) Theoretical Limits
- 3) Incorrect Classification Results.
- 4) Less Prediction Accuracy.

IV. PROPOSED MODEL

The proposed model is introduced to overcome all the disadvantages that arise in the existing system.

This system will increase the accuracy of the supervised classification results by classifying



V. CONCLUSION

We have developed an approach to the detection of cyberbullying behavior. If we can successfully detect such posts which are not suitable for adolescents or teenagers, we can very effectively deal with the crimes that are committed using these platforms. An approach is proposed for detecting and preventing Twitter cyberbullying using Supervised Binary classification Machine Learning algorithms. Our model is evaluated on both Support Vector Machine and Naive Bayes, also for feature extraction, we used the TFIDF vectorizer. As the results show us that the accuracy for detecting cyberbullying content has also been great for Support Vector Machine which is better than Naive Bayes. Our model will help people from the attacks of social media bullies. Binary classification Machine Learning algorithms. Our model is evaluated on Naive Bayes. It enhances the performance of the overall classification results of the data. An approach is proposed for detecting and preventing Twitter cyberbullying using Supervised Binary classification Machine Learning algorithms. the data. An approach is proposed for detecting and preventing Twitter cyberbullying using Supervised learning.

VI. ADVANTAGES

- A. High performance.
- B. Provide accurate prediction results.
- C. It avoids sparsity problems.

REFERENCES

- [1] Manpreet Singh, Maninder Kaur, "Content-based Cybercrime Detection: A Concise Review," International Journal of Innovative Technology and Exploring Engineering (IJITEE) ISSN: 2278-3075, Volume-8 Issue-8, pages 1193-1207, 2019.
- [2] Ying Chen, Yilu Zhou, Sencun Zhu, and Heng Xu. "Detecting offensive language in social media to protect adolescent online safety." In Privacy, Security, Risk and Trust (PASSAT), 2012 International Conference on and 2012 International Conference on Social Computing (SocialCom), pages 71– 80. IEEE, 2012.
- [3] Nalini Priya. G and Ashwini. M (2015) "A Dynamic Cognitive System For Automatic Detection and Prevention Of Cyber-Bullying Attacks", ARPN Journal of Engineering and Applied Sciences ©2006-2015 Asian Research Publishing Network (ARPN). VOL. 10, NO. 10, JUNE 2015.
- [4] "Protective shield for social networks to defend cyberbullying and online grooming attacks" in Proceedings of 40th IRF International Conference, Pune, India, ISBN: 978-9385832-16-1, 2015.
- [5] Gupta, P. Kumaraguru, and A. Sureka, "Characterizing pedophile conversations on the internet using online grooming," CoRR, vol. abs/1208.4324, 2012.
- [6] K. Jedrzejewski and M. Morzy, "Opinion Mining and Social Networks: A Promising Match," 2011 Int. Conf. Adv. Soc. Networks Anal. Min., pp. 599– 604, Jul. 2011.
- [7] H. Hosseinmardi, S. A. Mattson, R. I. Rafiq, R. Han, Q. Lv, and S. Mishra, "Analyzing Labeled Cyberbullying Incidents on the Instagram Social Network."
- [8] Kelly Reynolds, April Kontostathis, Lynne Edwards, "Using Machine Learning to Detect Cyberbullying", 2011 10th International Conference on



10.22214/IJRASET



45.98



IMPACT FACTOR:
7.129



IMPACT FACTOR:
7.429



INTERNATIONAL JOURNAL FOR RESEARCH

IN APPLIED SCIENCE & ENGINEERING TECHNOLOGY

Call : 08813907089  (24*7 Support on Whatsapp)