



iJRASET

International Journal For Research in
Applied Science and Engineering Technology



INTERNATIONAL JOURNAL FOR RESEARCH

IN APPLIED SCIENCE & ENGINEERING TECHNOLOGY

Volume: 10 Issue: VII Month of publication: July 2022

DOI: <https://doi.org/10.22214/ijraset.2022.45181>

www.ijraset.com

Call:  08813907089

E-mail ID: ijraset@gmail.com

Flood Plain Mapping and Identification of Warning Level Prior to Flood for Chalakudy River

Shinto M D¹, Chinnamma M A², Deepa Davis³

¹M. Tech Student, ²Professor, Department of Civil Engineering, Malabar College of Engineering and Technology Desamangalam, Thrissur

³M.Tech Scholar, Department of Civil Engineering, Government Engineering College, Thrissur

Abstract: Flood is one of the most dangerous disasters occur in the world. It endangers the lives of humans and other species. In India one – fifth of the global death rate is happening due to flood. From 2018 June 1 st to August 19 Kerala also experienced a high intense rainfall which results severe flooding. Five million people were affected and 433 people loss their life during this flood. Hence one way to minimize the effect of flood is proper operation of flood forecasting and flood control systems. In this paper we analysed drastic flood situations in Chalakudy river basin during the years 2018 - 2021. Mapping of flood plain of Chalakudy river basin was prepared using HEC – RAS and ARC GIS and initially drowned areas were mapped using Google Earth Engine. Also identified the flood warning level of Chalakudy river and each local bodies based on actual data and field surveys.

Keywords: Flood mapping, HEC-RAS, ARC GIS, Google Earth Engine, Flood warning level

I. INTRODUCTION

Throughout the history of man, flood is one of the foremost devastating and expensive natural disasters. Flood typically caused intense precipitation, fast snowmelt or tsunami in coastal areas. The impacts caused go so much on the far side the value of broken things within the flood. It threatens the lives and properties of humans and other species. In this paper, we prepared the flood inundation map of Chalakudy river basin with respect to water level by analysing the water level at the river gauge stations and rainfall intensities from the previous records and inundation area found by direct field enquiries. The main scope of this project is to provide a warning system for each local body to evacuate the house holders prior to flood. Other scope of this project is to safeguard the house hold materials from flood by early warning and evacuate only the people that will be affect by flood. It will offer time to manage the condition by the government. It will scale back the value of flood management and relief camp expenses.

II. STUDY AREA

The Chalakudy river basin in Kerala is selected as the study area. Fig.1 shows the physical map of Chalakudy river basin It is the fifth largest river in Kerala with length of 144 km. The river basin is bounded by the Karuvannur sub-basin on the north and the Periyar sub-basin on the south. The basin consists of about 30,000 ha of wet lands. The river basin receives an average rainfall of about 3000 mm. The total drainage area of the river is 1704 sq.km and out of this 1404 sq.km lies in Kerala and the rest 300 sq.km in Tamil Nadu. Major tributaries of this west flowing river originate from the Anamalai hills, Parambikulam plateau and Nelliampathy hills of southern western ghats.

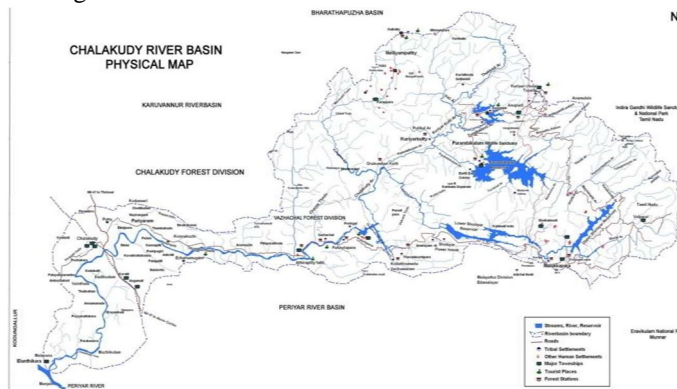


Fig.1 Chalakudy River basin map (google)

The river and its tributaries have been dammed at six places, Thunakkadavu dam, Peruvuripallam dam, Parambikulam dam, Kerala Sholayar dam, Tamilnadu Sholayar dam and Poringalkuthu dam. The natural hydrological regime in the river altered due to these dams and diversions. Apart from dams and diversion structures, numerous drinking water schemes and lift irrigation schemes are also dependent on the river. Chalakudy river basin having two river gauge stations. One of it is at Vettilappara near silver storm water theme park. it is under Kerala irrigation department. The another one is at Arangaly downstream of Chalakudy bridge near Arangaly manappuram. The exact location of river and rain gauge stations are described in Table1 and Table 2 and a map of hydrological meterological stations are shown in Fig.2.

Table 1 Gauge discharge stations in Chalakudy river basin

Name of Station	Latitude	Longitude	Maintained by
Vettilappara	10.29279	76.4777002	Irrigation Department
Arangaly	10.286071	76.323631	CWC

Table 2 Rain Gauge Stations in Chalakudy river basin

Name of Rain gauge Station	Latitude	Longitude	Maintained by
Vettilappara	10.291	76.509	Irrigation Department
Thunakadavu	10.436	76.777	Irrigation Department
Parambikulam	10.392	76.777	Irrigation Department
Vynthala	10.263	76.3	Irrigation Department
Thumboormuzhi	10.297	76.452	Irrigation Department
Karappara	10.457208	76.647581	KSEB
Peruvurappalam	10.441667	76.775	Irrigation Department
IIP Chalakudy	10.307746	76.332526	Other Agency
Arangaly	10.285892	76.325826	CWC

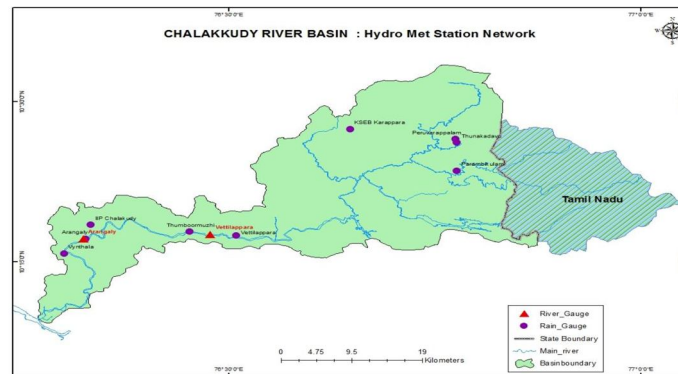


Fig.2 Hydrometeorological stations in the Chalakudy river basin

III. DATA COLLECTION

The hydraulic modelling of the study area is carried out in HEC-RAS, which requires both basin model as well as meteorological data. Basin model preparation requires inputs including Digital Elevation Model (DEM), land use map. The meteorological data include daily precipitation readings from Vettilappara and Thumboormuzhi rain gauge stations and the discharge data of outlet station. These are required for the analysis and fixing of flood warning level in the Chalakudy river basin and at the local bodies. Also the field survey conducted and questionnaires were prepared to interview the people of the panchayat to record the details of the flood, its intensity, and its impact.

A. Collection of River Gauge Reading from Vettilappara River Gauge Station

For the preparation of flood map with respect to water level at Vettilappara river gauge station, it has been collected river gauge readings from the Chalakudy Hydrology Department for the years 2018, 2019 and 2021 shown in Table.3 From these readings, we tabulate the river gauge reading with respect to the flood happening instance.

Table 3 River gauge reading at Vettilappara at the time of flood in August 2018, 2019 and 2021

Date	Water Level in m
12-10-2021	3.13
18-10-2021	2.28
21-10-2021	2.08
19-10-2021	1.80
08-08-2019	4.40
09-08-2019	4.30
10-08-2019	2.70
11-08-2019	2.30
16-08-2018	6.70
17-08-2018	5.10
15-08-2018	3.64
18-08-2018	2.90

B. Collection of rainfall reading corresponds to maximum water level

For fixing the safe flood warning levels, rainfall intensities corresponds to maximum water level at each rain gauge stations have been collected from Chalakudy Hydrology Department for the years 2018, 2019 and 2021 as shown in Table 4.

Table 4. Rainfall intensity corresponds to maximum water level

Date	Rainfall intensity		
	Vettilappara	Thumboormuzhy	Vynthala
12-10-2021	95.3	82.4	42
18-10-2021	110.2	91.4	123.8
19-10-2021	5.3	7.4	2
21-10-2021	62.3	15.1	16
08-08-2019	75.3	65.2	40.8
09-08-2019	152.1	157.8	155.8
10-08-2019	63.2	35.9	63.2
11-08-2019	111.2	116.4	122.8
15-08-2018	220.3	213	196.2
16-08-2018	230.1	300	-
17-08-2018	210.1	209.4	-
18-08-2018	36.2	34	-

C. Field Survey

A survey was carried out in the selected local bodies for finding the exact days and time which the flood happens. From the above it has been found out by people interaction the height of water level with respect to time at the time of flood. Then find out the latitude and longitude of the points at which the height of water level that are collected.

From the above data prepared a table showing water level, date, time of flood water of each flood affected area in each local bodies. Finally prepare the inundation map with respect to water level with Google Earth Engine.

D. Materials and Softwares Used

For this study, flood prone areas mapped using HEC – RAS and Arc GIS software. Survey of India Toposheet (SOI Toposheet) used for drawing drainage patterns. Mapping of Initially drowned areas were done using Google Earth Engine software. Survey of India (SOI) Toposheet on 1:50,00 scales used for drawing drainage patterns.

IV. RESULTS AND DISCUSSION

A. Flood Plain Mapping Using HEC-RAS and Arc GIS

Regarding a flood inundation study the flow depth is the most important output. The flow depth corresponding to the given conditions was obtained as output from HEC- RAS as shown in Fig.3. The inundation depth varies from 0 to 20 m. Higher depths are observed in the channel and it reduces on banks. The terrain elevation is the most important factor that determines the flood inundation. the flood inundation is maximum in the agricultural areas specifically paddy fields which have a low elevation compared to other regions.



Fig. 3 Inundation depth for flood prone areas

B. Preparation of A Flood Map of Initially Drowned Areas in the Chalakudy River Basin at the Panchayat Level Using Google Earth Engine

From the field enquiries and data collected from the hydrology section chalakudy, tabulate results of some places which is affected by flood. separate flood maps were prepared for chalakudy municipality and severly affected Panchayaths within the Chalakudy river basin. The flood affected panchayats and municipality in the Chalakudy River Basin taken for the study were pariaram, meloor, kadukutty, annamamada, kuzhoor panchayats and chalakudy municipality. The panchayat level flood maps and the flood analysis are detailed below.

1) *Pariyaram Panchayat*: The flood water level and spatial extent will be documented through the survey along with the duration of flood and rate of water level increase during the period. From the field observation and enquiry, the area which is affected by flood in Chalakudy river basin is very first is at Kammalam. This place is in pariaram panchayat ward. This place is flooded due to over flows Kappathode which is a tributary of Chalakudy river. This happened when the river gauge reading reached at 2.7 m and the height of inundation was 0.5 m. water level and inundation heights are shown in Table 5 and inundation map of Pariyaram panchayat at water level 2.7 m is shown in Fig.4.

Table 5. Pariyaram panchayat- Water level, date, time and inundation height

Date	Time	River gauge reading	Height of inundation	Description of place
12 /10 /2021	5.00	2.7	.5	Pariyaram panchayath Ward 2, kammalam
12 /10 /2021	6.00	2.8	1.2	
12 /10 /2021	7.00	2.95	1.9	
12 /10 /2021	8.00	3.13	2.6	



Fig.4 Flood inundation map of Pariyaram by google earth at water level 2.7m

- 2) *Meloor Panchayat*: From the analysis of collected datas and enquiries, 13th ward at Devine colony was the initially drowned area in meloor panchayat which loacted along the banks of chalakudy river. This locality is mainly depending on the water level at Arangaly station. The panchayat is completely surrounded by the river and over of river inundated 16 of the 17 wards in the recent floods. This happened when the river gauge reading reached at 4.51 m and the inundation height was 0.2m. during high intense rainfall when the river gauge reading at 5.75 m, the height of inundation was 1.4 m. River gauge readings and corresponding inundation heights are shown in Table 6.

Table 6 Meloor panchayat- Water level, date, time and inundation height

Date	Time	River gauge reading at vettalapara station	River gauge reading at arangaly station	Height of inundation	Description of place
08/08/2018	3.00 pm	3.59	4.51	0.2	Ward13, Devine colony, Meloor
08/08/2018	4.00 pm	3.559	5.16	1.0	
08/08/2018	5.00 pm	3.413	5.75	1.4	
12/10/2018	8.00 am	3.13	5.94	0.1	

- 3) *Kadukutty Panchayat*: From the field enquiries and surveys, we got a clear idea about the aftereffects of flood in this panchayat. All the roads leading to the locality were washed away by the overflowing waters of Chalakudy river. Kadukutty grama panchayat is mainly depending on the water level at Arangaly station. This area is inundated when the water level reached at 3.96 m and the height of inundation was 0.6m. Table 7 shvos the river gauge readings at two different stations and corresponding height of inundation. From the analysis of data, Valoor bridge, Koratty- Annamanada road in ward 11 was initially drowned on 8th August 2018.

Table 7 Kadukutty panchayat- Water level, date, time and inundation height

Date	Time	River gauge reading at vettalapara station	River gauge reading at arangaly station	Height of inundation	Description of place
08/08/2018	2.00 pm	3.598	3.96	0.6	Ward 11, valoor bridge, koratty- Annamanada road
08/08/2018	3.00 pm	3.59	4.51	1.2	
08/08/2018	4.00 pm	3.559	5.16	1.8	
12/10/2018	8.00 am	3.13	5.94	0.1	

4) *Annamanada Panchayat*: From the surveys and analysis, it is clear that left bank of Cheruvaloor and upstream side of Pulikakadavu bridge was the initially drowned area. Area inundated when river gauge reading reached 4.26 m at arangaly station and the corresponding inundation height was 0.1 m. Table 8 explains river gauge readings and corresponding inundation heights at vettilappara and arangaly station. Fig.5 shows inundation map of Kadukutty and Annamanada panchayats.

Table 8 Annamanada panchayat- Water level, date, time and inundation height

Date	Time	River gauge reading at vettilappara station	River gauge reading at arangaly station	Height of inundation	Description of place
12 /10 /2021	5.00 am	2.7	4.26	0.1	u/s of pulikkakadavu bridge left bank cheruvaloor
12 /10 /2021	6.00 am	2.8	5.01	0.2	
12 /10 /2021	7.00 am	2.95	5.55	0.4	
12 /10 /2021	8.00 am	3.13	5.94	0.8	



Fig.5 Flood inundation map of Kadukutty and Annamanada panchayats

5) *Kuzhur Panchayat*: This panchayat was completely submerged in the 2018 floods and initially drowned area was Kunnathumkadu. This area has an agricultural based economy. The Chalakudy River runs along the area. The houses near the wetlands, riverbanks, and paddy fields were inundated with high water levels which had risen more than 5.11 m and the corresponding height of inundation was 0.6 m. The Poringalkuthu reservoir had a major role in the flood levels of the kuzhur panchayat and its surrounding areas. The reservoir was opened unexpectedly on August 14th, 2018 raising the water level in all drainages. The unexpected opening of the Poringalkuthu reservoir made evacuation difficult. The water flow did not follow the meandering path of the river and was diverted resulting in flash floods. Table 9 shows the river gauge readings and corresponding inundation heights at Vettilappara and Arangaly stations.

Table 9 Kuzhur Panchayat-Water level, date, time and inundation height

Date	Time	River gauge reading at vettilappara station	River gauge reading at arangaly station	Height of inundation	Description of place
14/08/2018	3.00 am	2.701	5.11	0.6	Ward9, kunnathumkadu
14/08/2018	9.00 am	2.905	5.48	1	
14/08/2018	3.00 pm	4.114	5.82	2.10	
1 /10 /2021	8.00 am	3.13	5.94	0.1	

6) *Chalaky Municipality*: Chalaky municipality is mainly depending the water level at Arangaly station. From the analysis it is clear that this area was inundated when the water level reached at 5.11 m at Arangaly station and the corresponding height of inundation was 0.6 m. Table 10 shows the river gauge readings and corresponding inundation heights at Vettilappara and Arangaly stations. Kuttan padam in ward 12 was initially drowned during 2018 flood. Fig.6 shows the flood inundation map at Chalaky municipality.

Table 10- Chalaky municipality- Water level, date, time and inundation height

Date	Time	River gauge reading at vettilappara station	River gauge reading at arangaly station	Height of inundation	Description of place
14/08/2018	4.00 pm	4.20	5.11	0.6	Ward12,kuttadan padam,Chalaky municipality koodappuzha
14/08/2018	5.00 pm	4.321	5.48	0.70	
14/08/2018	6.00 pm	4.55	5.82	0.75	
12/10/2018	8.00 am	3.13	5.94	0.2	

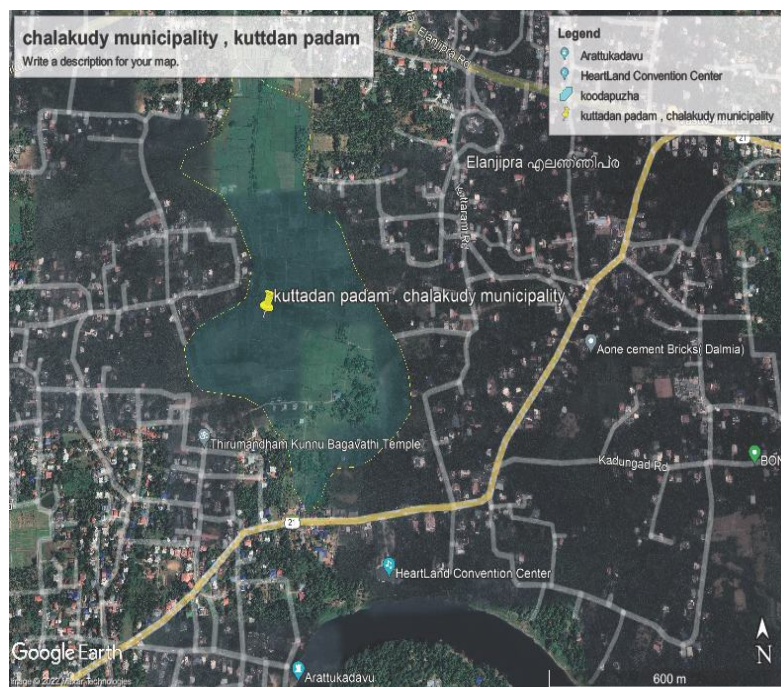


Fig.6 Flood inundation map at Chalaky Municipality

C. Warning Water Levels for Each Panchayat Prior to Flood

By analysing river gauge readings at vettilappara and arangaly stations and data collected through field survey, we can identify and suggest the warning flood levels for each panchayat. This information will be very helpful for local body authority and people for safe evacuation process. Table 11 shows warning water levels for each panchayat prior to flood. In the table, precipitation readings 0-50 mm and 50-200 mm indicates light rain and heavy rain respectively. Table 12 shows warning level of chalaky river of each river gauge station. Pariyaram was the only panchayat which mainly depends water level at vettilappara station and others are mainly depending water level at arangaly station. At vettilappara station, warning level and dangerous level identified as 2.30 m and 2.70 m respectively. At arangaly station, 4.30 m chosen as warning level and 5.10 m fixed as dangerous level.



10.22214/IJRASET



45.98



IMPACT FACTOR:
7.129



IMPACT FACTOR:
7.429



INTERNATIONAL JOURNAL FOR RESEARCH

IN APPLIED SCIENCE & ENGINEERING TECHNOLOGY

Call : 08813907089  (24*7 Support on Whatsapp)