



IJRASET

International Journal For Research in
Applied Science and Engineering Technology



INTERNATIONAL JOURNAL FOR RESEARCH

IN APPLIED SCIENCE & ENGINEERING TECHNOLOGY

Volume: 12 **Issue:** IV **Month of publication:** April 2024

DOI: <https://doi.org/10.22214/ijraset.2024.60843>

www.ijraset.com

Call:  08813907089

E-mail ID: ijraset@gmail.com

HealthTech Companion: Promoting Access to Personalized Medical Advice

Dr. Rishabh Garg¹, Shashi Shekhar Prasad², Mohita Verma³, Abhishek Singh⁴, Abhinav Singh⁵

Department of Computer Application, Lovely Professional University, Phagwara, India

Abstract: Science has come a long way in the last several years, thanks in large part to machine learning tools. This improvement is most noticeable in the field of medical diagnostics, where it is now much easier to diagnose disorders based only on symptoms. Although there are frequently similarities between the symptoms, each disease presents with its own distinct set of signs. It is therefore essential for a diagnosis to be made correctly to identify patterns within these symptoms. However, the sheer number of illnesses and the symptoms that go along with them provide a formidable obstacle to anybody trying to identify their own health issues. Picture yourself feeling sick, but not knowing why you are feeling so bad. This is where a useful chatbot may be quite beneficial, letting users enter their symptoms and acting as an informed guide in making educated guesses about possible illnesses. The Apriori algorithm, which is well-known for its capacity to find patterns in big datasets by linking objects together, is one potent tool used in this situation. Within the healthcare industry, the Apriori algorithm is particularly good at identifying patterns of disease by associating it with related symptoms. This allows the chatbot to provide well-informed information in response to user inputs. Apart from the Apriori method, Recurrent Neural Networks (RNNs) are also utilized due to their ability to handle sequential input and produce replies to user queries that are relevant for the context. The chatbot gives people the ability to evaluate health issues even in the lack of expert medical knowledge by integrating these algorithms. This gives people the ability to take charge of their health by quickly requesting help and according to the chatbot's instructions. Furthermore, the use of Quantum Machine Learning methods enhances the chatbot's skills even further. A viable path to improving illness prediction accuracy and honing the chatbot's recommendations is through the use of quantum algorithms, which can handle complicated data structures and carry out calculations that are beyond the capabilities of conventional algorithms. Because these sophisticated algorithms enable early diagnosis, diseases may be treated and lifestyle changes can be made earlier, improving prognoses and boosting survival rates. Additionally, early identification shortens the time it takes for illnesses to worsen.

Keywords: chatbot, diagnosis, illness, machine learning, symptoms.

I. INTRODUCTION

The area of medical research has made significant strides in the last several years, especially with regard to the use of machine learning techniques. These developments have had a major influence, for example, in the domain of symptom-based disease diagnosis. In the past, a major part of diagnosing diseases has been establishing patterns in symptoms, which can be difficult given the wide range of possible conditions. Consider the following situation: you have symptoms and are feeling ill, but you don't know what's causing them. It's a frequent situation, particularly when there are several potential conditions to consider. At times like these, a chatbot with sophisticated algorithms can come in handy. In its role as a virtual assistant, it converses with users about their symptoms and uses advanced algorithms, such as the Apriori algorithm, to forecast possible illnesses linked to those symptoms. The Apriori algorithm is highly effective in finding connections between symptoms and illnesses. It is renowned for its ability to find patterns in enormous datasets. It can make probable diagnoses by identifying patterns in symptom profiles, which improves the effectiveness of the diagnostic procedure. The chatbot uses Recurrent Neural Networks (RNNs), a technology that is skilled at comprehending and interpreting data sequences, to further improve the user experience. As a result, the chatbot is better able to understand user input and offer recommendations and tailored information.

By using Quantum Machine Learning methods, the chatbot's skills are substantially enhanced. Quantum algorithms provide new opportunities for enhancing illness prediction accuracy and honing the chatbot's suggestions because of their capacity to handle complicated data structures and carry out calculations that are beyond the capabilities of conventional algorithms. The chatbot provides consumers with a platform to evaluate their health issues without the need for expert medical knowledge by utilizing these cutting-edge algorithms. Because of this empowerment, people may now actively manage their health by asking for assistance when needed, in accordance with the chatbot's advice.

Furthermore, early illness detection made possible by the chatbot can greatly enhance treatment results and recovery rates by enabling prompt treatments and lifestyle modifications to halt the advancement of the disease.

In summary, chatbot technology's use of machine learning, including quantum algorithms, into healthcare improves medical information accessibility while streamlining proactive healthcare management. In the end, this helps people achieve better health outcomes and improves the effectiveness, efficiency, and personalization of healthcare.

II. LITERATURE REVIEW

The examination of nine articles' worth of literature offers a thorough summary of the changing techniques used in chatbot creation.[12] All of this research show how far chatbot technology has advanced in the last ten years. The paper also looks at the parallels and discrepancies between these approaches and the strategies used by winning chatbots in contests like the Loebner Prize. Teaching chatbots to understand text written in natural language is one well-known strategy that has been studied in the literature.[2] This involves using sophisticated neural network topologies like recurrent neural networks (RNNs) and sequence-to-sequence Long Short-Term Memory (LSTM) networks. It is pointed out that there are specific difficulties in putting RNN-based chatbots into practice, suggesting areas in need of more study and development. Noteworthy research also presents a machine learning-based illness prediction system. This method assesses how well four distinct algorithms predict illnesses based on symptoms in an effort to improve disease diagnosis and treatment results. These methods have the potential to transform healthcare by enabling early detection and intervention. Furthermore, research recommends incorporating chatbots into e-commerce websites, emphasizing their ability to improve user experience and expedite consumer interactions. This application shows how chatbot technology may be used in a variety of fields outside of natural language processing and healthcare. Aside from these developments, developing chatbots with Quantum Machine Learning algorithms is becoming more popular. The potential of quantum algorithms to revolutionize machine learning tasks, including chatbot construction, is too great to be ignored, even if it is not addressed directly in the evaluated publications. When managing complicated data structures and carrying out computations that are more sophisticated than those of classical algorithms, quantum algorithms have special capabilities. Chatbot systems may be able to improve their functionality and broaden their range of uses by using quantum algorithms. [6]

The literature study, taken as a whole, demonstrates the variety of approaches and uses propelling chatbot technology forward. Natural language processing, illness prediction, and e-commerce integration are just a few of the ways that chatbots are developing as effective tools that have the potential to revolutionize a number of sectors. One interesting area of current progress is the integration of quantum machine learning algorithms, which opens up new possibilities for improving chatbot performance and expanding the realm of AI-driven conversational systems.[2] [9]

III. PURPOSED WORK

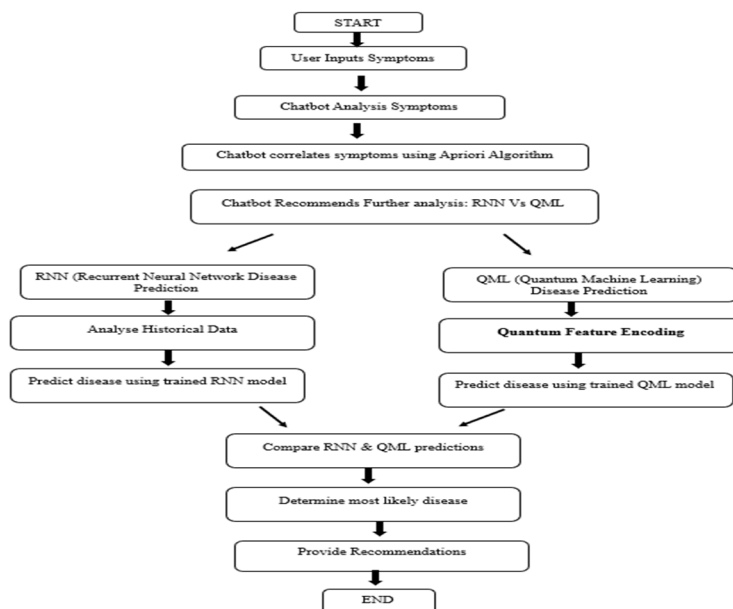


Fig. 3(a): System Architecture

- 1) *User Interaction:* By using speech input, users may interact with our chatbot in a way that mimics expert consultations. This speech option improves accessibility and user engagement by offering a polished and user-friendly experience.[1][3] **Making a Decision:** When a user first contacts, they are given the choice to either seek medical attention or have a professional conversation. Adapting dynamically to the user's preference, the chatbot switches between professional conversations and a structured question-and-answer style for medical queries.[5]
- 2) *Illness Prediction:* The chatbot enters a diagnostic mode and uses structured questions to collect symptoms and medical history from individuals who choose to seek medical attention.[7][12] The chatbot can help with early identification and treatment planning by predicting probable ailments by evaluating these inputs using machine learning techniques.
- 3) *Professional Conversations:* The chatbot skilfully participates in conversations on healthcare, research, and other professional topics with users that desire professional discourse, guaranteeing a flawless and educational engagement experience.
- 4) *Chatbot Design:* Choosing the right software, operating system (like Windows for dependability and business usage), and development tools (like the Python programming language) are important factors to take into account when creating a chatbot. Professionalism and usability are key considerations in the design of the chatbot interface, which uses artificial intelligence and pattern matching to provide replies that meet industry standards.[1]
- 5) *Chatbot Implementation:* Professionalism and clarity are prioritized in the design of chat interfaces, and dialog boxes are produced using Python's Tkinter package. Artificial intelligence methods are used to assess user input and deliver precise and expert replies. These methods include pattern matching and machine learning algorithms.

Furthermore, our research delves into the assimilation of Quantum Machine Learning algorithms into chatbot technology, with the objective of augmenting diagnostic precision and broadening the chatbot's scope in professional settings. All things considered, our work is a major step forward for chatbot technology, providing professionals with a flexible and useful tool for professional discussions and medical consultations. It also opens the door for future developments in quantum-enhanced artificial intelligence in professional domains.

IV. CHATBOT DESIGN

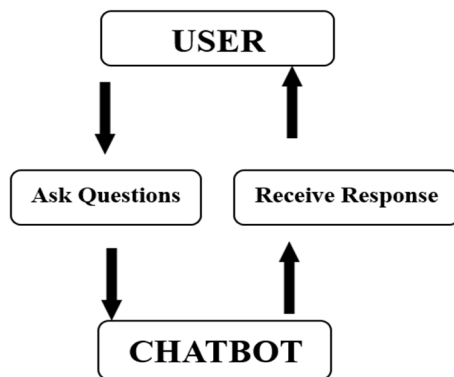


Fig. 4(a): Chatbot work

A chatbot is essentially a talking robot or a computer program designed to mimic speech. It plays a role during the design process by providing users with timely responses, to their inquiries. In chatbot design diagrams, like use case diagrams are frequently utilized to illustrate the systems functionalities. How it interacts.[1] [3]

When designing a chatbot it's crucial to consider the following aspects;

- 1) *Choosing the Operating System:* - Windows is commonly chosen for its reliability and user-friendly interface. [7]
- 2) *Selecting Software:* - Visual Studio Code is highly recommended for Python development due, to its use and user-friendly environment.[6] [11]
- 3) *Developing the Chatbot:* - The chatbot is built using Python programming language with the goal of helping users improving communication and providing entertainment. [5]

Here's a way to create a Chat: - Python's Tkinter is employed for producing dialog boxes while chat interfaces are designed with user patterns in mind. [7]

Using techniques, like pattern matching artificial intelligence is employed to analyse user inputs, against stored data to generate responses. The main aim of the design is to keep things simple allowing the chatbot to provide answers to user inquiries that match information in the database.[5]

Chatbots aim to engage users in enjoyable conversations by responding conversationally using English grammar.

V. ALGORITHMS USED

This proposed system utilizes two algorithms. These are: -

A type of learning model designed for handling data sequences is known as the Recurrent Neural Network or RNN, for short. Sequential data includes any type of data where the order of elements matters, such as time series, text, voice and DNA sequences.[8]

An RNN essentially works like a computer that can understand and process information in sequences. When you read a sentence, your brain interprets each word not based on its meaning but also in relation to the context provided by the preceding words. RNNs function, in a way. [9]

A. Model, for Sequence to Sequence

- 1) *The Encoder:* - Alice inputs her message in English using the interface. The encoder plays a role in this model as it meticulously analyses each word provided by Alice. Its main task is to condense the meaning of the message into a form referred to as a "thought vector" or "context vector." This vector provides a summary of Alices input, by capturing both the content and context of her statement.
- 2) *The Decoder:* -receiving the context vector from the encoder the decoder takes on the responsibility of translating the content, for Bob into French. Acting as a language interpreter the decoder meticulously unveils the encoded meaning by producing words that best capture Alices intent. Gradually refining its output, it ensures accuracy and coherence until it achieves a translation of Alices message into French.[8]

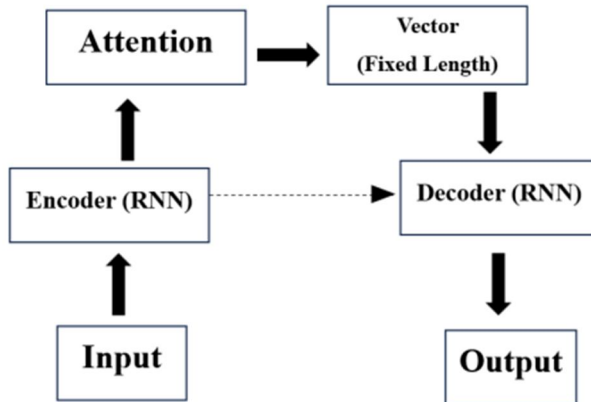


Fig. 5(a): Seq2Seq Model

B. Apriori Algorithm

An important technique, in data mining known as the Apriori algorithm is utilized to discover appearing groups of items in databases primarily for the purpose of establishing association rules. For instance, it aids in spotting patterns of items frequently bought together in consumer purchases within analysis. The algorithm follows an approach by examining the frequencies of specific elements across various transactions. Subsequently it generates sets of items, with increasing sizes. Evaluates their levels of support against a predetermined threshold to determine their frequency of occurrence. Just picture a scenario where a grocery store conducts an analysis... [9]

Imagine if you will a grocery store going through its sales records. Upon review they find that 50 transactions involve milk, 40 involve bread and 30 involve eggs. The Apriori algorithm then examines combinations of these items starting with pairs, like bread and eggs, milk and bread and so forth. The key focus of the algorithms analysis is based on the Apriori principle. As per this concept any larger set containing an item group will be rare if that item group is rare well. Therefore, the algorithm infers that individual subset, like milk and bread are also likely to be uncommon if the trio of milk, bread and eggs is found to be rare.

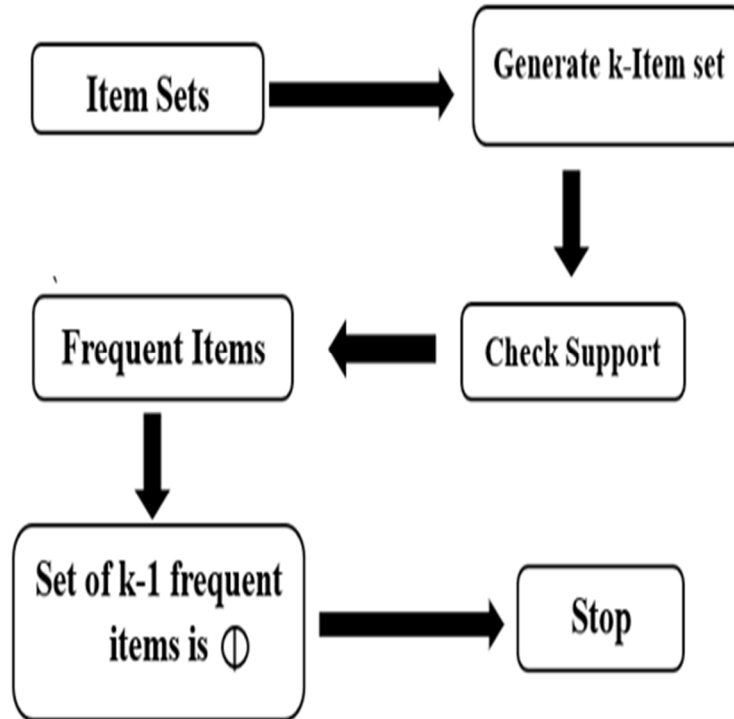


Fig. 5(b): Apriori Algorithm

By reducing the search space computing efficiency is enhanced. Companies can gain insights, into their customers purchasing habits using the Apriori algorithm. This allows businesses to enhance customer satisfaction refine product placement and tailor marketing strategies by identifying item combinations and rules of association. Moreover, the systematic approach of the algorithm simplifies the analysis of data in a scalable manner empowering decision makers to make data informed decisions that drive profitability and business growth. Additional details can be found in this section.[9] [13]

C. Quantum Machine Learning Algorithm

Quantum Machine Learning (QML) is an rapidly evolving area that delves into leveraging quantum mechanics to improve or speed up machine learning methods. Despite being, in its phases QML holds the promise of transforming tasks thanks to the distinctive characteristics of quantum systems.

One key aspect is superposition, where qubits, the units of quantum information can exist in states concurrently. This capability allows for exploration of possibilities potentially leading to quicker solutions.

Another important feature is entanglement, which occurs when qubits become interconnected when apart. This interconnectedness enables correlations and computations with changes, in one qubit impacting the other.

- 1) *Quantum Parallelism*: - Quantum algorithms have the ability to carry out operations, on inputs at the time taking advantage of the parallel nature of quantum systems.
- 2) *Enhanced Computational Power*: - Quantum Machine Learning (QML) algorithms offer the potential to tackle problems that classical computers currently struggle with thanks to their greater computational power.
- 3) *Improved Learning and Optimization*: - QML algorithms can enhance the efficiency of learning and optimization processes by exploring solution spaces.
- 4) *Potential for Faster Solutions*: - With quantum parallelism QML algorithms can simultaneously explore solutions potentially resulting in computation times, for specific tasks.
- 5) *Scalability*: - Quantum computers have the capability to expand and manage datasets and complex issues compared to classical computers.

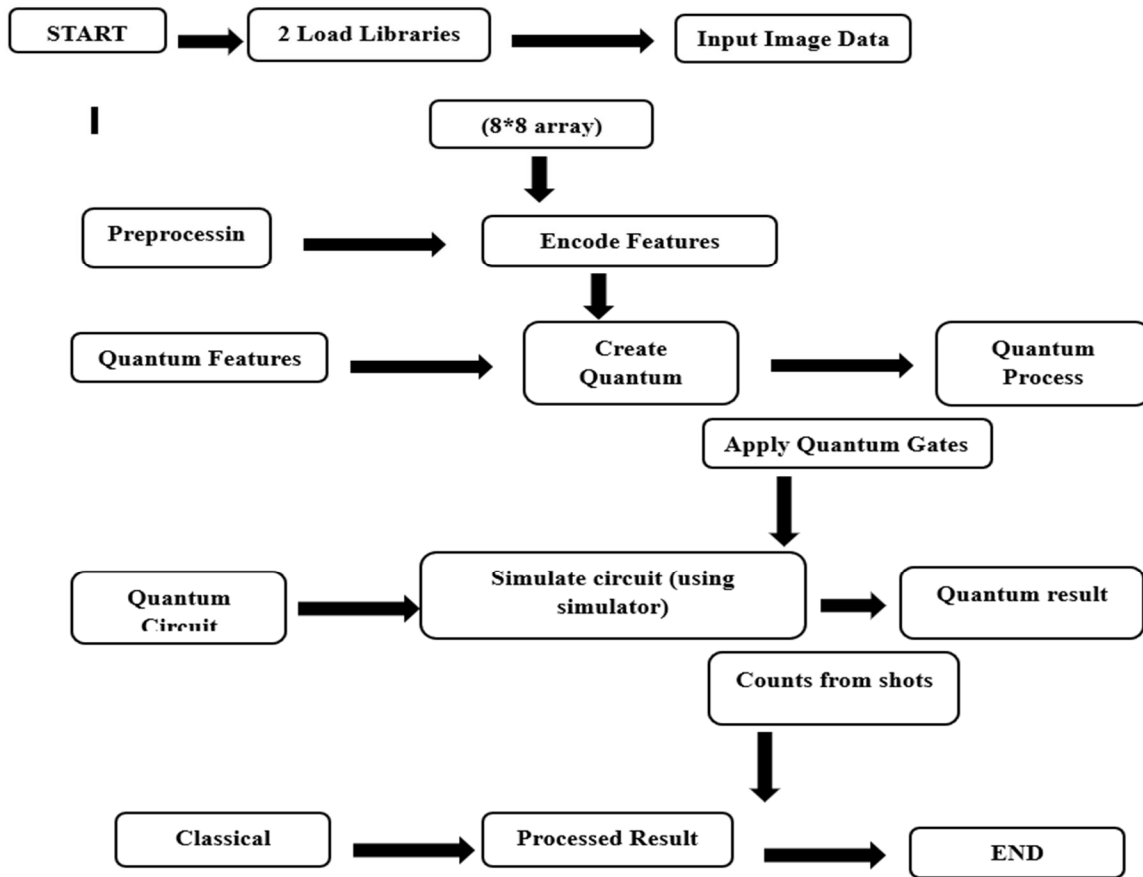


Fig. 5(a): -Quantum machine learning algorithm

VI. RESULT

Medicine has significantly advanced as a result of the incorporation of machine learning algorithms, especially the Apriori algorithm, which is especially useful for symptom-based illness diagnosis. People frequently find it difficult to stay on top of their health problems due to the wide range of illnesses and symptoms, which can cause uncertainty and anxiety. However, people may now simply submit their symptoms and get fast answers with the help of a chatbot that is outfitted with sophisticated algorithms. In order to analyze these symptoms and find patterns and relationships between diseases and symptoms, the Apriori method is essential. Through the identification of patterns in symptom profiles, the chatbot may make recommendations for possible diagnoses, enabling users to better comprehend and manage their health conditions.

Additionally, the chatbot makes use of Recurrent Neural Networks (RNNs) to enable communication, enabling smooth user-chatbot interaction. Because RNNs are excellent at processing sequential data, the chatbot can comprehend user inputs and produce replies that are appropriate for the context. The chatbot uses these algorithms to give people an easy-to-use platform to evaluate their health issues without the need for specific medical knowledge. This enables people to take charge of their health management by asking for advice and basing decisions on the chatbot's recommendations.

The chatbot's ability to identify ailments early on not only makes it possible to start treatments on time, but it also makes lifestyle changes that greatly improve recovery rates and treatment results. Essentially, the chatbot uses machine learning algorithms to provide users with individualized healthcare management, giving them the ability to take charge of their health.

Moreover, the incorporation of Quantum Machine Learning algorithms into the chatbot system has the potential to improve diagnostic precision and refine therapy suggestions. Because of their special powers, quantum algorithms have the potential to completely change the way diseases are predicted and managed, creating new opportunities for the provision of individualized healthcare.

All things considered, the chatbot is a ground-breaking development in medical technology that gives people an effective tool for managing and diagnosing illnesses, ultimately leading to better health outcomes and a higher standard of living.

Comparative analysis of various techniques on chatbot

Author	Goal	Technique	Limitations	Results
Jhonny Cerezo Juraj Kubelka Romain Robbes Alexandre Bergel	Utilize Pharo software to incorporate a chatbot, for expert advice tasks. Enhance the quality of communication by providing open-source developers with the opportunity to connect with individuals.	The IDF algorithm is used to calculate concepts. Skilfully crafting a Discord username and understanding source code are essential.	It was challenging because users were hoping for a chatbot that could engage in a conversation. The participants assumed that everyone would be very talkative and were quite confused.	Guests were looking forward to engaging in conversations, with the chatbot not just receiving answers to their queries. Users found the chatbots behaviour lacking although they appreciated its recommendation feature.
R Babu K Jayashree	The focus is, on highlighting the significance of Cloud and IoT in the healthcare sector.	Cloud computing and the Internet of Things are revolutionizing healthcare by integrating sensors and actuators into objects to monitor individuals' well-being.	In the situation described there were no limitations mentioned.	The article discusses the benefits of incorporating IoT and cloud technology in healthcare emphasizing how real time monitoring and remote tracking can be enhanced through the use of devices and cloud platforms.
Vivek Katariya S Vitthal Gutte	Let's introduce Health Bot through chatbot technology to improve the eHealth approach. Chatbots can help enhance communication, between doctors and patients offering aid materials and medical guidance based on symptoms.	Conversational language processing, in the healthcare sector with dialog flow. Utilizing a cluster powered by Apache Spark for decision making logic and employing machine learning methods, for identifying patterns using the Spark ML toolkit.	Current emergency response and illness detection systems have limitations in terms of their ability to retain information and produce insights.	Health Bot utilizes chatbots to mimic interaction and improve the eHealth framework.
R Kavitha Chethana International Chethana Murthy	The health Bot enhances the eHealth landscape by emulating interaction through chatbots.	Using cosine similarity, TF IDF and N grams to assess similarity and prioritize keywords. Eliminating stop words to pinpoint keywords. Implementing an expert system tailored for addressing queries related solely to databases.	The constraints are not explicitly outlined in the scenarios provided.	For responses, the chatbot utilizes cosine similarity, TF-IDF, and N-gram. Expert systems respond to questions that aren't stored in databases.

<p>Flora Amato Stefano Marrone Vincenzo Moscato Gabriele Piantadosi Antonio Picariello Carlo Sansone</p>	<p>Investigate the ways that humans and machines can interact in eHealth applications. Of relying on human machine interfaces consider utilizing chatbots to enhance engagement. Through a chatbot provide recommendations, for preventing illnesses.</p>	<p>A chatbot created to improve communication, between humans and machines, in healthcare environments. Using learning techniques to elevate the eHealth framework.</p>	<p>Sensibility die data dell cartels clinic, tempo operative elaboration di data so large scala.</p>	<p>Using first-level characteristics, HOLMeS obtained an AUC of 74.65. With disease-specific characteristics, HOLMeS achieved an AUC of 86.78.</p>
<p>Ahmed Fadhil Gianluca Schiavo</p>	<p>Designing interfaces, for healthcare through UX design. Helping experts explore the possibilities and limitations of chatbots. Addressing challenges, in developing domain conversational user interfaces.</p>	<p>When examining data, it's helpful to use grounded theory and content analysis. Take a look, through the databases of ACM, IEEEExplore and Scopus for information.</p>	<p>Some activities are more suitable, for engagement than verbal interactions. To function at their best chatbots must have internet connectivity. The potential enhancement of dialogues is hindered by the framework of dialogue setups. There isn't a representation in place for all conversations within conversational systems. Research regarding participants, in discussions remains scarce.</p>	<p>I reviewed studies, on chatbots and conversational interfaces identifying research, interaction trends and UX design principles. I extensively analysed how chatbots communicate, user experiences and interactions between users and bots. The studies also revealed details about user engagement levels and the prevalence of health-related features, in chatbots.</p>
<p>Kai Yu Zijian Zhao Xueyang Wu Hongtao Lin Xuan Liu</p>	<p>Let's chat briefly about the lack of diversity, in our responses and how we can make them more unique. Let's use memory to help guide our responses and ensure they stay on topic and meaningful. In text discussions let's work on enhancing the range and quality of our answers. I propose an approach to learning through a sequence, to sequence method that leverages</p>	<p>A method, for learning sequences with the help of memory. Evaluating the quality of responses using BLEU ratings. Using GRU to teach from one sequence to another. Utilizing a beam search approach to ensure responses.</p>	<p>Traditional methods, for sequence-to-sequence processing often fall short in delivering meaningful responses. The issue of vanishing gradients arises with extended inputs, when employing fixed length vector representations. Additionally conventional sequence, to sequence models based on conventions tend to lack management.</p>	<p>The proposed approach enhances the assessment, by humans with quality and variety. The encoder decoder frameworks external memory simplifies overall reactions. ESED models offer responses, then standard models.</p>

	memory.			
L Sathish Kumar A Padmapriya	Utilize forms of media, like TV and smartphones to detect and forecast illnesses addressing the challenges of predicting diseases in India due, to illiteracy.	The ID3 method is employed for predicting and identifying ailments. Utilizing data mining to predict health conditions.	Gathering information. Collecting data to develop the model. Restrictions are, in place to reduce the number of identified rules.	By collecting data sets the ID3 approach aids in predicting illnesses. Neural networks support the prediction of blood pressure, diabetes and heart conditions. The scarcity of established protocols, for heart disease limits the scope. Medical experts can anticipate survival. Adjust treatments through the application of data mining methods.
Dr. Richard S Balbir Singh Bani, Ajay Pratap Singh	AIML aims to create user interfaces using sustainable code.	The ALICE chatbot relies on pattern recognition and understanding language. AIML files are utilized in the implementation of the ALICE knowledge base.	Elizabeth finds it challenging to follow writing conventions that include both uppercase and lowercase letters. In contrast, to ALICE Elizabeth allows for animated gestures while speaking.	Elizabeth and the ALICE chatbot systems are being contrasted. They delve into the AIML file-based knowledge base system employed by ALICE. A proposal, for implementing an ALICE driven chatbot, for college queries.
Luciana Benotti Cecilia Mart Inez Fernando Schapachnik Mart Inez	Develop chatbots to educate high school students, on topics related to computer science. Encouraging engagement and ensuring completion of assignments holds importance particularly in the case of female students.	Chatbot programming involves utilizing computer science elements such, as automata and variables. Techniques, like state automata, lemmatization methods and pattern matching are commonly employed. Evaluation of chatbots is done through competitions and observational studies. The creation of chatbot topics and transitions is achieved by employing an automaton with states.	The prediction of responses is more linguistics focused, than computer science, in terms of complexity. Online educational programs struggle with maintaining student retention rates.	Girls tended to interact with the chatbot than boys did. Chatbots showed task completion rates about five times more. The evaluation process of chatbots involves utilizing state automata and pattern matching techniques.

<p>Md Satu Tajim Niamat Ullah Akhund Mohammad Yousuf</p>	<p>Enhancing the chatbot, for online shopping to facilitate conversations using language. Adding a chat assistant in Bengali to offer support, in languages.</p>	<p>Integrating a chatbot into an e commerce site Utilizing the AIML Knowledge Base System to address customer queries Developing a shopping helper, with Bangla language capability for user needs Incorporating Entity Framework 5 with ASP.NET MVC 4, for software development.</p>	<p>The document did not specify any limitations.</p>	<p>An intelligent shopping assistant was developed using files. To enhance user engagement multilingual support has been incorporated.</p>
<p>Allen Daniel Sunny Sajal Kulshreshtha Satyam Singh Mr. Mohan Ba</p>	<p>Accurately diagnose diseases using machine learning methods. Compare supervised machine learning approaches, for diagnosing conditions. Utilize Apriori and Naive Bayes algorithms in a system, for diagnosing diseases. Predict illnesses based on symptoms using machine learning techniques. Cut down on healthcare costs by employing tools for diagnosing illnesses.</p>	<p>When it comes to supervised machine learning we use algorithms like Apriori and Naive Bayes. We also work on preparing and refining real world data through preprocessing. Additionally, we convert text data into format for analysis purposes.</p>	<p>The performance of K neighbour and decision tree algorithms is not up, to par. Its challenging to pinpoint an illness when there are symptoms to consider.</p>	<p>In the realm of disease diagnosis, the Naive Bayes and Apriori algorithms showed performance. On the hand the K neighbours and Decision Tree algorithms exhibited relatively lower effectiveness. The Apriori algorithm provided the probability of a symptom for any given condition.</p>

VII. CONCLUSION

In conclusion, even though conversational chatbots that may assist with medical diagnosis are a big progress, there are still a number of noteworthy issues that need to be resolved in order to further improve their efficacy. The most significant of these issues is the dearth of thorough information on medical disorders, which makes it more difficult for the chatbot to offer insightful responses. Unlocking the potential of healthcare chatbots requires improving the quality of data in this domain. The fact that training chatbots to respond to queries about health takes a lot of time further emphasizes the necessity for improvement and efficiency. Simplifying this procedure is essential to guaranteeing that chatbots can function as trustworthy resources for medical advice and support. Future-focused, there are several avenues for enhancing healthcare chatbots. It would be more accessible and user-friendly to include a tool that translates speech to text in order to accommodate users who prefer spoken communication. Moreover, adding thorough details about ailments and their symptoms to the chatbot's database would let it provide consumers more insightful and customized recommendations. Furthermore, the accuracy of forecasts might be greatly improved by including real-time health data from wearable devices, such as heart rate monitors and BMI trackers, into the diagnosing process. Chatbots can provide more accurate evaluations and suggestions based on user profiles by utilizing this extra data.

Healthcare chatbots are unquestionably helpful now, despite these difficulties. To realize their full potential as comprehensive and trustworthy health aids, there is still plenty of space for development and enhancement. Healthcare chatbots have the potential to revolutionize health management and enable people to make educated decisions about their health, as they continue to address problems and adopt cutting-edge technology.



Moreover, the use of Quantum Machine Learning algorithms has the potential to transform healthcare chatbots' capabilities. Through the utilization of quantum algorithms' distinct properties, chatbots can improve their prediction precision and provide more individualized and accurate medical guidance. This integration is a new frontier in healthcare technology, opening doors for creative solutions that might transform the way people get treatment and give them the ability to take charge of their health like never before.

REFERENCES

- [1] Jhonny Cerezo, Juraj Kubelka, Romain Robbes, Alexandre Bergel, Building an Expert Recommender Chatbot, 2019 IEEE/ACM 1st International Workshop on Bots in Software Engineering.
- [2] R Babu, K Jayashree, "A Survey on the Role of IOT and Cloud in Health Care," in International journal of scientific Engineering and technology research, chennai, 2015.
- [3] Vivek Kataria, Vithal s Gutte, "Intelligent Health Bot for transforming healthcare," in Proceeding of National Conferences on Machine Learning, Pune, 2019.
- [4] Divya S, Indumathi V, Ishwarya S, Priyasankari M and Kalpana Devi S, "A Self-Diagnosis Medical Chatbot Using Artificial Intelligence," in MAT journal, Chennai, 2018.
- [5] Kavitha B R, Chethana R Murthy, "Chatbot for healthcare system using Artificial Intelligence," in International Journey of Advance Research, Ideas and Innovations in Technology, Karnataka, 2019.
- [6] Flora Amato, Stefano Marrone, Vincenzo Moscato, Gabriele Piantadosi, Antonio Picariello, and Carlo Sansone, "Chatbots meet eHealth: automatizing healthcare," Italy, 2017.
- [7] Ahmed Fadhil, Gianluca Schiavo, "Designing for Health Chatbots," Italy, 2018.
- [8] Kai Yu, Zijian Zhao, Xueyang Wu, Hongtao Lin, Xuan Liu, "Rich Short Text Conversation Using Semantic Key Controlled Sequence Generation". IEEE trans. On ASL., to be published.
- [9] L. Sathish Kumar, A. Padmapriya, "Prediction for Common Disease using ID3 Algorithm in Mobile Phone and Television", International Journal of Computer Application, Volume 50-No.4, July, 2012.
- [10] Balbir Singh Bani, Ajay Pratap Singh, "College Enquiry Chatbot Using A.L.I.C.E", International Journal of New Technology and Research, Volume 3-No.1, 2017.
- [11] Liciana Benotti, Maria Cecillia Martinez, Fernando Schapachnik, "A Tool for Introducing Computer Science with Automatic Formative Assessment". IEEE Transaction on Learning Technologies, Vol.11, No.2, 2018.
- [12] Md. Shahriare Satu, Tajim Md. Niamat Ullah Akhund, Mahammad Abu Yousuf. (2017, Feb.). Online Shopping Management System with Customer Multilanguage Supported Query handling AIML Chatbot. Available: <https://www.researchgate.net/publication/313315555>.
- [13] Allen Daniel Sunny, Sajal Kulshreshtra, Satyam Singh, Srinabh, Mr. Mohan Ba, Dr. Sarojadevi H., "Disease Diagnosis System by Exploring Machine Learning Algorithm", International Journal of Innovations in Engineering and technology(IJIET), Available: <http://dx.doi.org/10.21172/ijiet.102.03>.
- [14] Dahiya, M. (2017). A Tool of Conversation: Chatbot, International Journal of Computer Sciences and Engineering, 5(5).



10.22214/IJRASET



45.98



IMPACT FACTOR:
7.129



IMPACT FACTOR:
7.429



INTERNATIONAL JOURNAL FOR RESEARCH

IN APPLIED SCIENCE & ENGINEERING TECHNOLOGY

Call : 08813907089  (24*7 Support on Whatsapp)