



IJRASET

International Journal For Research in
Applied Science and Engineering Technology



INTERNATIONAL JOURNAL FOR RESEARCH

IN APPLIED SCIENCE & ENGINEERING TECHNOLOGY

Volume: 12 **Issue:** VI **Month of publication:** June 2024

DOI: <https://doi.org/10.22214/ijraset.2024.63365>

www.ijraset.com

Call:  08813907089

E-mail ID: ijraset@gmail.com

IoT Based Smart Farming System using Machine Learning

Avinash Awasthi¹, Shreshth Singh², Hemant Miranka³

Computer Science and Engineering, Lovely Professional University, Phagwara, India

Abstract: *This research delivers an Internet of Things-enabled smart farming system that leverages AI capabilities for better agricultural management. The system includes manual NPK value input in addition to a number of sensors, including as flame, DHT, and soil moisture sensors, for real-time monitoring of environmental conditions and soil health. The YOLO model and an image detection system with OpenCV are also used in the assessment of crop health. Crop recommendations are facilitated by a Random Forest classification system, which is based on sensor data and picture analysis results. The Raspberry Pi serves as the central processing unit, coordinating the processes of data collection, analysis, and decision-making. By providing farmers with practical information, the system aims to maximize output, minimize resource usage, and promote sustainable farming practices. Farmers can lessen risks such as diseases, pests, and other problems by keeping a close eye on things and analyzing bad weather patterns.*

Keywords: *Smart farming, Internet of Things (IoT), Artificial Intelligence (AI), Raspberry Pi, Sensor network, Machine learning, Random Forest classifier, Precision agriculture, Crop recommendation, Environmental monitoring, Sustainable agriculture.*

I. INTRODUCTION

An whole new way of thinking about farming operations is being brought about by the Internet of Things (IoT) and artificial intelligence (AI), which are transforming the agriculture sector worldwide. This convergence has led to the development of smart farming systems, which aim to optimize resource utilization, enhance crop productivity, and promote sustainable agriculture practices. This study offers a comprehensive Internet of Things (IoT) smart agriculture solution that is enhanced by artificial intelligence within this framework. Due to their reliance on human intervention and subjective evaluations, traditional farming practices often yield suboptimal results and inefficiencies. Nevertheless, the use of IoT technologies enables real-time monitoring and management of agricultural processes, supporting precision farming methods and data-driven decision-making. In addition to manually entering the levels of NPK (nitrogen, phosphorus, and potassium), which are essential nutrients for plant growth, the system also makes use of sensor data. This makes it possible to precisely control nutrients in accordance with crop needs. Furthermore, an image detection system utilizing OpenCV for image processing and the YOLO (You Only Look Once) paradigm for insect infestation and nutrient shortfall detection enables real-time assessment of crop health. Machine learning techniques are utilized to enhance the decision-making process in smart farming. A Random Forest classifier is utilized to select crops based on sensor data and image analysis outcomes. The Raspberry Pi, which serves as the system's core processing unit, facilitates the collection, analysis, and dissemination of actionable insights to farmers. Through proactive monitoring and assessment of environmental conditions, crop health, and nutritional deficiencies, the recommended integrated farming strategy helps farmers to quickly address issues such as pest infestations, disease outbreaks, and unfavorable weather patterns, thereby reducing crop losses and increasing resilience.

II. LITERATURE REVIEW

The survey of the literature on Internet of Things (IoT)-based smart farming includes a variety of studies and research articles that explore the use of IoT technology in agriculture. These studies examine several elements of leveraging IoT technology to improve agricultural practices, with particular attention to production, efficiency, and sustainability. One prominent study highlights the critical role that information and communication technology play in contemporary agricultural systems. It is named "Smart farming: Internet of Things (IoT)-based sustainable agriculture." It emphasizes how crucial Internet of Things-based solutions are to promoting sustainable farming methods by enhancing data analysis, monitoring, and decision-making. Additionally, a thorough study titled "A Survey on the Role of IoT in Agriculture for the Implementation of Smart Farming" provides information about the network technologies and component parts of IoT-based smart farming. This survey explores the integration of cloud computing, sensor networks, and IoT devices in agricultural operations, offering a sophisticated view of the field.

A noteworthy addition to the field is the research paper "An efficient IoT based smart farming system using machine learning algorithms." The goal of this project is to optimize agricultural management practices through predictive analysis and decision support by introducing an Internet of Things (IoT)-based smart farming system combined with machine learning algorithms.

| Title | Authors | Publication Year | Source |
|---|--|------------------|---------------------|
| Smart farming: Internet of Things (IoT)-based sustainable agriculture | M Dhanaraju, P Chenniappan, K Ramalingam... | 2022 | mdpi.com |
| A Survey on the Role of IoT in Agriculture for the Implementation of Smart Farming | MS Farooq, S Riaz, A Abid, K Abid, MA Naeem | 2019 | iee.org |
| An efficient IoT based smart farming system using machine learning algorithms | NG Rezk, EED Hemdan, AF Attia, A El-Sayed... | 2021 | Springer |
| Smart farming: IoT based smart sensors agriculture stick for live temperature and moisture monitoring using Arduino, cloud computing & solar technology | A Nayyar, V Puri | 2016 | researchgate.net |
| An IoT based smart farming system using machine learning | A Dahane, R Benameur, B Kechar... | 2020 | ieeexplore.ieee.org |
| IoT based smart farming | C Mageshkumar... | 2020 | ieeexplore.ieee.org |
| Machine learning applications in IoT based agriculture and smart farming: A review | MWP Maduranga, R Abeysekera | 2020 | ijeast.com |
| IoT based smart farming system | N Patil, VD Khairnar | 2021 | academia.edu |
| IoT-based strawberry disease prediction system for smart farming | S Kim, M Lee, C Shin | 2018 | mdpi.com |
| A review on smart IoT based farming | H Farooq, HU Rehman, A Javed... | 2020 | theiaer.org |

Figure 1. Literature Review Table

III. HARDWARE DESCRIPTION

A. Raspberry Pi

The Raspberry Pi functions as the main controller in this hardware configuration, offering the processing power and interface skills needed to oversee the other parts. For embedded systems and Internet of Things applications, the Raspberry Pi is a great option because of its tiny size, affordability, and adaptability. With its Linux-based operating system and several programming language support, it is usable by a broad spectrum of developers and enthusiasts. The Raspberry Pi serves as the system's brain in this configuration, managing communication between sensors, actuators, and other peripheral devices.

B. DHT11 Sensor

The DHT11 sensor is an essential part of the hardware configuration that measures the humidity and temperature in the surrounding air. It measures temperature and relative humidity precisely by using a thermistor and a capacitive humidity sensor. Since the DHT11 has digital output, interacting with microcontrollers such as the Raspberry Pi is simple. It is a well-liked option for environmental monitoring applications in smart agriculture, home automation, and weather stations due to its affordability, ease of use, and dependability.

C. Soil Moisture Sensor

In agricultural contexts, soil moisture sensors, like the Soli Moisture sensor, are essential for tracking soil moisture levels. This sensor measures the soil's volumetric water content, giving important details on the moisture and health of the soil. Farmers can minimize overwatering or underwatering, improve irrigation schedules, and encourage healthy plant growth by assessing the moisture content of their soil. To precisely detect soil moisture, the Soli Moisture sensor usually uses capacitive or resistive sensing principles.

D. Buzzer

In the hardware configuration, the buzzer serves as an auditory output device for alerting and alarming functions. It alerts people to particular events or conditions by emitting audible signals, including beeps or tones. The buzzer in smart agriculture applications could be set up to sound an alarm in reaction to important events like high temperatures, low soil moisture, or fire threats that are picked up by other system sensors. The buzzer offers users a simple and efficient way to get critical information in real time.

E. Flame Sensor

To identify the existence of flames or potential fire threats in the surroundings, a flame sensor is built into the hardware configuration. In the case of a fire outbreak, this sensor is essential to fire detection and prevention systems because it sets off alarms or starts automated shutdown procedures. To precisely identify fires, the flame sensor usually uses ultraviolet (UV) or infrared (IR) detecting techniques. A flame sensor can be added to the system to improve safety protocols and lower the likelihood of fire-related mishaps.

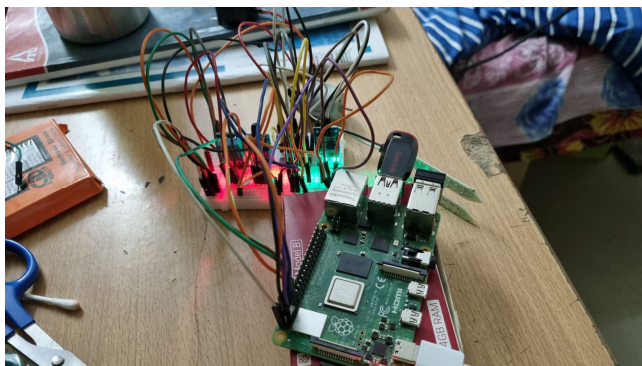


Figure 2. Demonstration of Complete Hardware

F. Motor with L293D Bridge

Physical activities are enabled by a motor that is managed by an L293D bridge and is dependent on user-defined logic or sensor readings. In the hardware configuration, the motor acts as an actuator, enabling the Raspberry Pi to regulate the motion of mechanical parts or apparatuses. In its role as a motor driver, the L293D bridge isolates the Raspberry Pi from potentially harmful back electromotive force (EMF) while supplying the voltage and current required to drive the motor. The system can precisely and dependably manage the movement of agricultural equipment, open and close valves, and modify irrigation systems by merging a motor with an L293D bridge.

IV. SOFTWARE DESCRIPTION

A. YOLO (You Only Look Once)

Real-time object detection jobs are revolutionized by YOLO, an innovative object detection technique. In contrast to conventional techniques that carry out detection on various portions of the image, YOLO creates a grid out of the image and concurrently predicts bounding boxes and class probabilities for every grid cell. With this method, YOLO can detect objects with amazing speed and accuracy, which makes it useful for a range of applications like smart agriculture, surveillance systems, and autonomous cars. YOLO provides notable benefits in terms of effectiveness and efficiency due to its capacity to identify many objects in a single neural network pass.

B. AWS IoT Core

Amazon Web Services (AWS) offers a managed cloud solution called AWS IoT Core that enables safe cloud connectivity for Internet of Things (IoT) devices. It enables users to gather and analyze data, respond in accordance with preset rules, and interface with IoT devices in a simple and safe manner. Features like device administration, message routing, and security measures like device encryption and authentication are all provided by AWS IoT Core. Developers may create scalable, dependable IoT solutions with powerful analytics, machine learning, and automation capabilities by utilizing AWS IoT Core. These solutions can be seamlessly integrated with other AWS services.

C. OpenCV

A robust open-source package for image processing and computer vision applications is called OpenCV. For applications including facial recognition, object tracking and detection, image/video processing, and machine learning, it provides a broad range of functionalities. With the extensive collection of tools and algorithms offered by OpenCV, programmers may create reliable computer vision applications for a variety of platforms and programming languages. In industries including robotics, augmented reality, medical imaging, and autonomous systems, OpenCV is widely utilized because of its comprehensive documentation, vibrant community, and cross-platform interoperability.

D. Android Studio

Google's official integrated development environment (IDE) for creating Android apps is called Android Studio. It provides a wide range of features and tools for quickly and effectively creating excellent Android applications. A robust code editor, a visual layout editor, debugging tools, and emulators for testing apps across various Android devices and versions are all included in Android Studio. It supports a number of programming languages, including C++, Java, and Kotlin, giving developers the freedom to select the one that best fits their needs and tastes. For developers globally, Android Studio streamlines the whole app development process—from design to deployment—through its seamless interface with other Google services and libraries.

V. METHODOLOGY

The project aims to optimize crop selection and irrigation management by creating a smart agriculture system through the integration of numerous technologies. The methodology consists of multiple interrelated phases that work together to efficiently provide the intended results.

To begin with, the system uses OpenCV and YOLO (You Only Look Once) to recognize objects in the agricultural field in real time, including people and animals. This makes it possible to monitor the presence of people and animals and take preventative action to safeguard worker safety or avoid damage to crops.

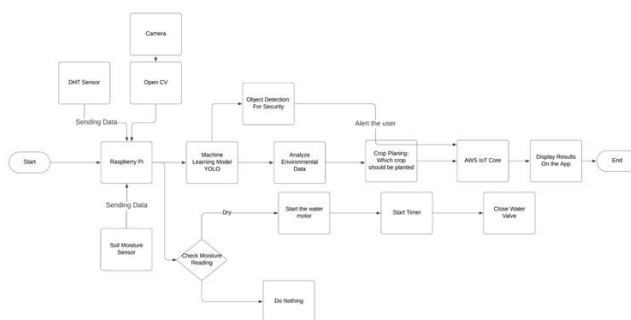


Figure 3. Complete Working Flowchart

The discovered data is then processed and evaluated using a Random Forest method, together with human entered data like crop types and field conditions. Taking into account variables such as soil composition, temperature, and past crop performance, this program forecasts the most viable crops. The system can maximize agricultural output and profitability by optimizing crop choices with the use of machine learning algorithms.

A DHT11 sensor is used to measure environmental elements including temperature and humidity in addition to crop prediction. These numbers are essential inputs for irrigation management, together with soil moisture information from a soil moisture sensor.

Moreover, AWS IoT Core is used to send the gathered data—which includes crop forecasts, environmental factors, and object detection results—to the cloud. Through the secure cloud-to-IoT device connection provided by AWS IoT Core, the agricultural system may be remotely managed and monitored. With the help of the cloud-based platform, farmers can save, analyze, and visualize data more easily and obtain up-to-date information to help them plan their irrigation and crop management.

By combining these technologies, the smart agriculture system improves agricultural production, efficiency, and sustainability by providing a complete irrigation management and crop selection solution. With the help of actionable information and automation capabilities, it gives farmers the capacity to increase agricultural yields, optimize resource consumption, and reduce their environmental effect.

VI. RESULTS

The deployed system sends data to AWS IoT Core for centralized processing and incorporates image identification technology for real-time agricultural field surveillance. The technology uses image detection to recognize and track the presence of people and animals in the fields, giving important information about possible dangers or security risks. These identified results are easily transferred to the safe and scalable cloud platform AWS IoT Core, where they are stored and subjected to additional analysis.



Figure 4. Crop Prediction using Random Forest



Figure 5. Realtime Object Detection and Cloud

Environmental variables including temperature, humidity, and soil moisture content are all continuously measured and recorded at the same time. ThingSpeak, a cloud-based IoT platform, uses these data points to graphically depict them so that farmers may see trends and changes over time. Farmers are able to obtain a thorough knowledge of crop health and field conditions by combining environmental data with image detection results.

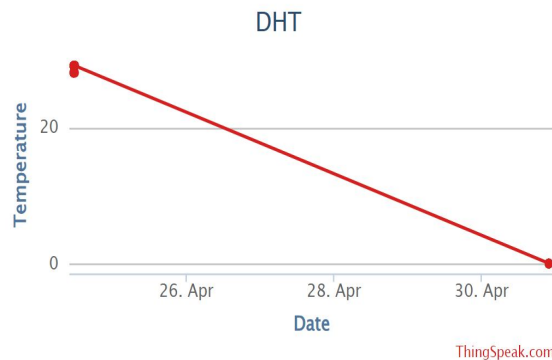


Figure 6. Temperature on Thingspeak

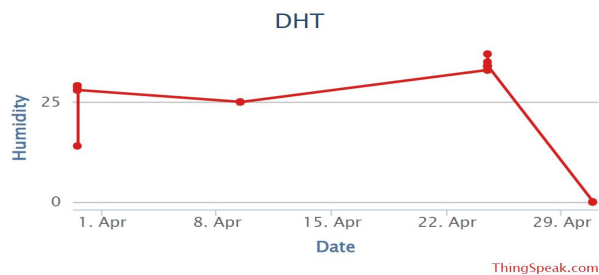


Figure 7. Humidity on Thingspeak

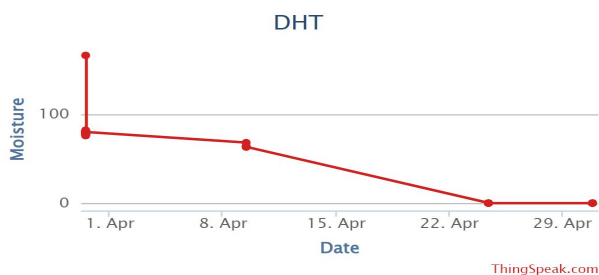


Figure 8. Moisture on Thingspeak

Farmers are empowered with real-time insights that are accessible from any location thanks to the smooth transmission of environmental data and detected photos to the cloud. This makes it easier for farmers to make proactive decisions that will help them respond quickly to changing circumstances and maximize crop management techniques. In the end, the system improves agricultural productivity, sustainability, and efficiency by offering useful data to help with decision-making.

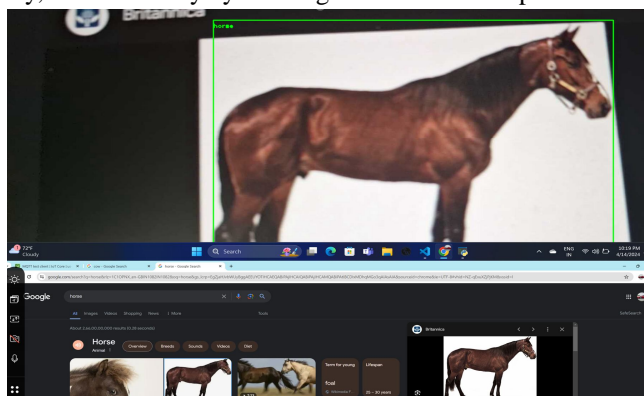


Figure 9. Real-time detection of Horse

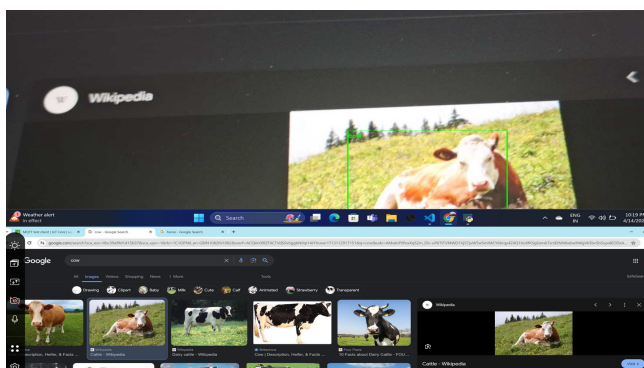


Figure 10. Real-time detection of Cow

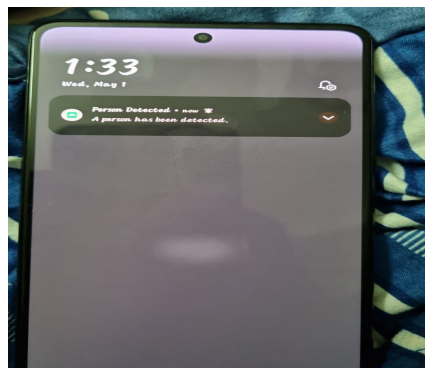


Figure 11. Mobile Application Alerts

VII. CONCLUSION

In conclusion, a major development in precision agriculture has been made with the combination of ThingSpeak, AWS IoT Core, and image detection technologies in the agricultural system. The system uses image detection to provide real-time field surveillance, allowing for the early identification of possible threats and safety issues. Farmers may make well-informed decisions with the help of centralized processing and analysis made possible by the smooth transfer of detected data to AWS IoT Core. Farmers may also observe patterns and variations over time thanks to ThingSpeak's graphical display of environmental data, which further improves field visibility. With the least possible negative impact on the environment, this all-encompassing approach to crop management enables preemptive interventions that maximize crop yields and optimize resource utilization.

REFERENCES

- [1] Farooq, M. S., Riaz, S., Abid, A., Abid, K., & Naeem, M. A. (2019). A Survey on the Role of IoT in Agriculture for the Implementation of Smart Farming. IEEE Access.
- [2] Rezk, N. G., Hemdan, E. E. D., Attia, A. F., El-Sayed, A., & Farouk, M. (2021). An efficient IoT based smart farming system using machine learning algorithms. Multimedia Tools and Applications.
- [3] Dahane, A., Benameur, R., Kechar, B., & Mahrane, A. (2020). An IoT based smart farming system using machine learning. 2020 International Conference on Advanced Communication Technologies and Networking (CommNet).
- [4] Mageshkumar, C. (2020). IoT based smart farming. 2020 International Conference on Computer Communication and Informatics (ICCCI).
- [5] Kim, S., Lee, M., & Shin, C. (2018). IoT-based strawberry disease predictio Biradar, H. B., & Shabadi, L. (2017). Review on IoT based multidisciplinary models for smart farming. 2017 2nd IEEE International Conference on Computational Intelligence and Networks (CINE).
- [6] Penchalaiah, N., Nelson Emmanuel, J., et al. (2020). IoT based smart farming using ThingSpeak and MATLAB. Proceedings of ICACI 2020: Proceedings of the International Conference on Advanced Computational and Information Intelligence.
- [7] Mathi, S., Akshaya, R., & Sreejith, K. (2023). An Internet of Things-based efficient solution for smart farming. Procedia Computer Science.
- [8] Karthikeyan, P. R., Chandrasekaran, G., et al. (2021). IoT based moisture control and temperature monitoring in smart farming. Journal of Physics: Conference Series.
- [9] Podder, A. K., Al Bukhari, A., Islam, S., Mia, S., et al. (2021). IoT based smart agrotech system for verification of urban farming parameters. Microprocessors and Microsystems.n system for smart farming. Sensors.
- [10] Sivabalan, K. N., Anandkumar, V., et al. (2020). IoT based smart farming for effective utilization of water and energy. International Journal of Electrical and Computer Engineering.
- [11] Dagar, R., Som, S., & Khatri, S. K. (2018). Smart farming–IoT in agriculture. 2018 International Conference on Intelligent Sustainable Systems.
- [12] Cadavid, H., Garzón, W., Pérez, A., López, G., et al. (2018). Towards a smart farming platform: from IoT-based crop sensing to data analytics. Colombian Conference on Computing.
- [13] Aliar, A. A. S., Yesudhasan, J., Alagarsamy, M., et al. (2022). A comprehensive analysis on IoT based smart farming solutions using machine learning algorithms. Bulletin of Electrical Engineering and Informatics.
- [14] Khan, Z., Khan, M. Z., Ali, S., Abbasi, I. A., et al. (2021). Internet of things-based smart farming monitoring system for bolting reduction in onion farms. Scientific World Journal.
- [15] Punjabi, H. C., Agarwal, S., Khithani, V., et al. (2017). Smart farming using IoT. International Journal of Engineering Research and Applications.
- [16] Kamilaris, A., Gao, F., et al. (2016). Agri-IoT: A semantic framework for Internet of Things-enabled smart farming applications. IEEE International Conference on Internet of Things (iThings).
- [17] Sridharani, J., Chowdary, S., Nikhil, K., et al. (2022). Smart farming: The IoT based future agriculture. IEEE International Conference on Smart Technologies and Management for Computing, Communication, Controls, Energy and Materials (ICSTM).
- [18] Ouafiq, E. M., Elrharras, A., Mehdiy, A., Chehri, A., et al. (2021). IoT in smart farming analytics, big data based architecture. International Conference on Smart Energy Systems and Technologies.
- [19] Nawandar, N. K., Satpute, V. (2019). IoT based intelligent irrigation support system for smart farming applications. IEEE International Conference on Industrial Technology and Management (ICITM).



10.22214/IJRASET



45.98



IMPACT FACTOR:
7.129



IMPACT FACTOR:
7.429



INTERNATIONAL JOURNAL FOR RESEARCH

IN APPLIED SCIENCE & ENGINEERING TECHNOLOGY

Call : 08813907089  (24*7 Support on Whatsapp)