



# IJRASET

International Journal For Research in  
Applied Science and Engineering Technology



---

# INTERNATIONAL JOURNAL FOR RESEARCH

IN APPLIED SCIENCE & ENGINEERING TECHNOLOGY

---

**Volume:** 10    **Issue:** XII    **Month of publication:** December 2022

**DOI:** <https://doi.org/10.22214/ijraset.2022.48000>

[www.ijraset.com](http://www.ijraset.com)

Call:  08813907089

E-mail ID: [ijraset@gmail.com](mailto:ijraset@gmail.com)

# Leaf Diseases Detection System Using Machine Learning

Prof. Swati Tiwari<sup>1</sup>, Pranjal Shyambabu Patle<sup>2</sup>, Pranshu Shyambabu Patle<sup>3</sup>, Kuldeep Moreshwar Sonkusare<sup>4</sup>, Pranali Shivshankar Mungate<sup>5</sup>

<sup>1</sup>Professor, G.H Rasoni College of Engineering, Nagpur

<sup>2, 3, 4, 5</sup>Dept. of Information Technology, G H Rasoni College of Engineering, Nagpur

**Abstract:** Agriculture supports living beings and nature in many ways, such as food and habitat. All humans as well as animals depend on the agriculture sector for their basic needs of food and nutrients. Thus, the importance of agriculture and the ways it can be improved further should be taken into account. While discussing agriculture, the topic of related diseases is not far behind. Crop disease is the most common threat that falls upon agricultural harvest. To address the issue at hand, firstly, farmers must figure out the situation on time. Then only the chance of saving the crops exists. We are aware of how the various types of diseases affect the yield badly and in turn affect the quantity. In this paper, we will detect such diseases and identify them. We will use image processing, Machine Learning Algorithms, and sample datasets to get the resulting detection.

**Keywords:** Machine Learning, Plant Disease, Image Processing

## I. INTRODUCTION

In India, where 80% of the population is dependent on agriculture, agribusiness has emerged as a key driver of economic development. Ranchers determine the best harvest based on the soil type, climate, local condition, and economic value. Most often, farmers who cannot repay bank loans they took out for farming purposes commit suicide as a result of production losses. We've seen that the climate is constantly changing today, which harms the crops and pushes farmers into debt and suicide. When various mathematical or statistical techniques are applied to data, these risks can be reduced, and using these techniques, we can inform the farmer about plant diseases affecting his agricultural land.

Due to governmental shortcomings, the agricultural industry started looking for new ways to increase food production. Researchers are working to create innovative, strong, and special technologies that can produce outcomes with high efficacy. A large harvest can be produced using a variety of techniques in the agricultural sector. Based on the data gathered, farmers using the precision agriculture technique can learn how to increase farm yield.

This methodology uses machine learning to classify plant diseases and image processing to detect them. Supervised learning and unsupervised learning are the two main classifications of machine learning. The label values in the supervised learning method are known. Regression and classification are two examples of supervised learning techniques. The label values in the unsupervised learning approach are unknown. Building a model that can be used to categorize healthy and unhealthy harvest leaves and, if the crop has any disease, predict which disease it is, is the primary goal of this research.

## II. LITERATURE REVIEW

A review of machine learning classification techniques for plant disease detection was proposed by Shruth et al. [1] and mainly described the overall plant disease detection system, which can be broken down into five significant stages, including image acquisition, annotated datasets, image processing, feature extraction, and classification.

Image acquisition, image processing, image segmentation, feature extraction, detection, and classification of plant disease are the five steps that make up Sehgal et al. "Plant's disease classification using soft computing and supervised machine learning" [2]. Data collection or data gathering processes use image acquisition. Some image features can be improved through image processing. The extraction of diseased areas from a plant's leaf uses image segmentation.

The color of the plant's diseased part is extracted using feature extraction.

Different machine learning techniques are used to identify plant diseases using detection and classification techniques.

The article "Image processing techniques for detecting and classifying plant disease: a review" was proposed by Hungilo et al. To identify and classify disease on plant leaves in this proposed system, image processing, and machine learning techniques are used.

There are two different approaches to dealing with the classification of plant diseases. The first is "training from the ground up," and the second is "transfer learning." When working with small datasets for deep learning tasks, the transfer learning method is used, and when working with sufficient datasets, the training from the scratch method. This research paper discusses the convolution neural network technique and the conventional technique for image processing.

### III. METHODOLOGY

Leaf diseases can be identified by observing leaf of plants. Image processing is performed on the images of leaves from the dataset. The image processing technique involves five basic steps and a data flow diagram is shown below in Fig 1.

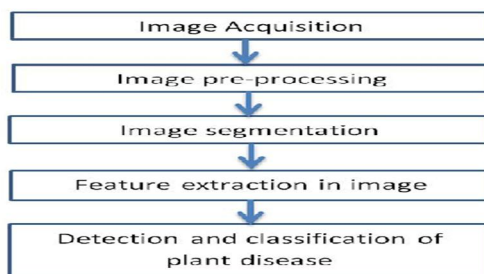


Fig 1. Leaf disease detection system

- 1) *Image Acquisition*: This dataset contains high-quality RGB (red, green, and blue) leaf images that include healthy leaf images and diseased leaf images. The first stage of the leaf disease identification and classification system is loading the database for use in the Leaf Dataset
- 2) *Image Pre-processing*: The second stage of the leaf disease detection and classification system is pre-processing. This involves some techniques like image resizing, image smoothing, image enhancement, etc. In this stage, noisy and inconsistent data is removed from the dataset to extract useful information.
- 3) *Image Segmentation*: Images are partitioned into RGB (red, green, blue), HSV (hue, saturation, value), and LAB (luminosity, green/red, blue/yellow) stages. This is the third stage of the leaf illness identification and classification framework.
- 4) *Feature Extraction in Image*: In-leaf disease classification uses features like color, texture, morphology, edges, etc. This approach has tracked down that morphological outcomes give preferable outcomes over different features. It tends to be identifying the infected leaf of the image that is most important.
- 5) *Detection and Classification of Plant Disease*: The fifth stage of the leaf disease recognition and classification system is the classification technique. This stage performs any of the machine learning techniques for classifying the various diseases in leaves. This is the final outcome stage of our proposed system. In this stage, users can identify and characterize leaf diseases.

### IV. EXPERIMENTAL RESULT

The experiment made use of a Kaggle data set. The RGB images of healthy and unhealthy leaves in this dataset are arranged into different classes. 20% of the ratio is used for the testing task on this dataset, and 80% of the ratio is used for training. Another index that was later created for prediction purposes is present in test images.

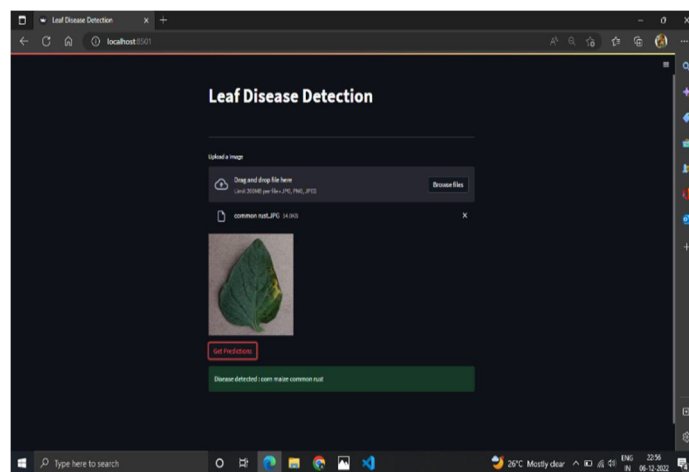
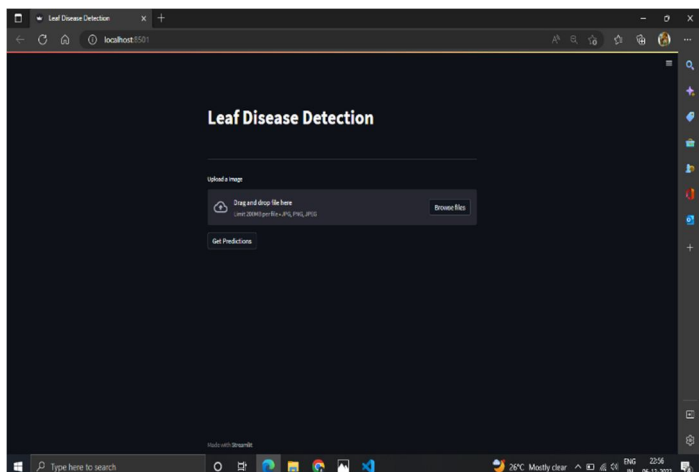
```

main.py
1 import streamlit as st
2 import tensorflow as tf
3 import os
4 import numpy as np
5 from PIL import Image
6
7
8
9 class_names = ["apple apple scab", "apple black rot", "apple cedar apple rust", "apple healthy",
10 "blueberry healthy", "cherry including sour powdery mildew", "cherry including sour healthy", "corn maize
11 cercospora leaf spot gray leaf spot", "corn maize common rust", "corn maize northern leaf blight", "corn
12 maize healthy", "grape black rot", "grape esca black measles", "grape leaf blight isariopsis leaf spot",
13 "grape healthy", "orange haunglongbing citrus greening", "peach bacterial spot", "peach healthy", "pepper
14 bell bacterial spot", "pepper bell healthy", "potato early blight", "potato late blight", "potato
15 healthy", "raspberry healthy", "soybean healthy", "squash powdery mildew", "strawberry leaf scorch",
16 "strawberry healthy", "tomato bacterial spot", "tomato early blight", "tomato late blight", "tomato leaf
17 mold", "tomato septoria leaf spot", "tomato spider mites two spotted spider mite", "tomato target spot",
18 "tomato tomato yellow leaf curl virus", "tomato tomato mosaic virus", "tomato healthy"]
19
20
21
22
23
24
25
26
27
28
29
30
31
32
33
34
35
36
37
38
39
40
41
42
43
44
45
46
47
48
49
50
51
52
53
54
55
56
57
58
59
60
61
62
63
64
65
66
67
68
69
70
71
72
73
74
75
76
77
78
79
80
81
82
83
84
85
86
87
88
89
90
91
92
93
94
95
96
97
98
99
100
101
102
103
104
105
106
107
108
109
110
111
112
113
114
115
116
117
118
119
120
121
122
123
124
125
126
127
128
129
130
131
132
133
134
135
136
137
138
139
140
141
142
143
144
145
146
147
148
149
150
151
152
153
154
155
156
157
158
159
160
161
162
163
164
165
166
167
168
169
170
171
172
173
174
175
176
177
178
179
180
181
182
183
184
185
186
187
188
189
190
191
192
193
194
195
196
197
198
199
200
201
202
203
204
205
206
207
208
209
210
211
212
213
214
215
216
217
218
219
220
221
222
223
224
225
226
227
228
229
230
231
232
233
234
235
236
237
238
239
240
241
242
243
244
245
246
247
248
249
250
251
252
253
254
255
256
257
258
259
260
261
262
263
264
265
266
267
268
269
270
271
272
273
274
275
276
277
278
279
280
281
282
283
284
285
286
287
288
289
290
291
292
293
294
295
296
297
298
299
300
301
302
303
304
305
306
307
308
309
310
311
312
313
314
315
316
317
318
319
320
321
322
323
324
325
326
327
328
329
330
331
332
333
334
335
336
337
338
339
340
341
342
343
344
345
346
347
348
349
350
351
352
353
354
355
356
357
358
359
360
361
362
363
364
365
366
367
368
369
370
371
372
373
374
375
376
377
378
379
380
381
382
383
384
385
386
387
388
389
390
391
392
393
394
395
396
397
398
399
400
401
402
403
404
405
406
407
408
409
410
411
412
413
414
415
416
417
418
419
420
421
422
423
424
425
426
427
428
429
430
431
432
433
434
435
436
437
438
439
440
441
442
443
444
445
446
447
448
449
450
451
452
453
454
455
456
457
458
459
460
461
462
463
464
465
466
467
468
469
470
471
472
473
474
475
476
477
478
479
480
481
482
483
484
485
486
487
488
489
490
491
492
493
494
495
496
497
498
499
500
501
502
503
504
505
506
507
508
509
510
511
512
513
514
515
516
517
518
519
520
521
522
523
524
525
526
527
528
529
530
531
532
533
534
535
536
537
538
539
540
541
542
543
544
545
546
547
548
549
550
551
552
553
554
555
556
557
558
559
560
561
562
563
564
565
566
567
568
569
570
571
572
573
574
575
576
577
578
579
580
581
582
583
584
585
586
587
588
589
590
591
592
593
594
595
596
597
598
599
600
601
602
603
604
605
606
607
608
609
610
611
612
613
614
615
616
617
618
619
620
621
622
623
624
625
626
627
628
629
630
631
632
633
634
635
636
637
638
639
640
641
642
643
644
645
646
647
648
649
650
651
652
653
654
655
656
657
658
659
660
661
662
663
664
665
666
667
668
669
670
671
672
673
674
675
676
677
678
679
680
681
682
683
684
685
686
687
688
689
690
691
692
693
694
695
696
697
698
699
700
701
702
703
704
705
706
707
708
709
710
711
712
713
714
715
716
717
718
719
720
721
722
723
724
725
726
727
728
729
730
731
732
733
734
735
736
737
738
739
740
741
742
743
744
745
746
747
748
749
750
751
752
753
754
755
756
757
758
759
760
761
762
763
764
765
766
767
768
769
770
771
772
773
774
775
776
777
778
779
780
781
782
783
784
785
786
787
788
789
790
791
792
793
794
795
796
797
798
799
800
801
802
803
804
805
806
807
808
809
810
811
812
813
814
815
816
817
818
819
820
821
822
823
824
825
826
827
828
829
830
831
832
833
834
835
836
837
838
839
840
841
842
843
844
845
846
847
848
849
850
851
852
853
854
855
856
857
858
859
860
861
862
863
864
865
866
867
868
869
870
871
872
873
874
875
876
877
878
879
880
881
882
883
884
885
886
887
888
889
890
891
892
893
894
895
896
897
898
899
900
901
902
903
904
905
906
907
908
909
910
911
912
913
914
915
916
917
918
919
920
921
922
923
924
925
926
927
928
929
930
931
932
933
934
935
936
937
938
939
940
941
942
943
944
945
946
947
948
949
950
951
952
953
954
955
956
957
958
959
960
961
962
963
964
965
966
967
968
969
970
971
972
973
974
975
976
977
978
979
980
981
982
983
984
985
986
987
988
989
990
991
992
993
994
995
996
997
998
999
1000
  
```

```

21 def set_input_tensor(interpreter, image):
22     """Sets the input tensor."""
23     tensor_index = interpreter.get_input_details()[0]["index"]
24     input_tensor = interpreter.tensor(tensor_index())[0]
25     input_tensor[:, :] = image
26
27
28 def get_predictions(input_image):
29     output_details = tf.lite_interpreter.get_output_details()
30     set_input_tensor(tf.lite_interpreter, input_image)
31     tf.lite_interpreter.invoke()
32     tf.lite_model_prediction = tf.lite_interpreter.get_tensor(output_details[0]["index"])
33     tf.lite_model_prediction = tf.lite_model_prediction.squeeze().argmax(axis=0)
34     pred_class = class_names[tf.lite_model_prediction]
35     return pred_class
36
37
38 ## Input Fields
39 uploaded_file = st.file_uploader("Upload a Image", type=["jpg", "png", "jpeg"])
40 if uploaded_file is not None:
41     img = Image.open(uploaded_file)
42     img = img.resize((224, 224))
43     st.image(img)
44     img_array = tf.keras.preprocessing.image.img_to_array(img)
45     img_array = tf.expand_dims(img_array, 0)
46
47
48 ## Input Fields
49 uploaded_file = st.file_uploader("Upload a Image", type=["jpg", "png", "jpeg"])
50 if uploaded_file is not None:
51     img = Image.open(uploaded_file)
52     img = img.resize((224, 224))
53     st.image(img)
54     img_array = tf.keras.preprocessing.image.img_to_array(img)
55     img_array = tf.expand_dims(img_array, 0)
56
57 if st.button("Get Predictions"):
58     suggestion = get_predictions(input_image=img_array)
59     if(suggestion == 'no disease'):
60         st.success(suggestion)
61     else:
62         st.success(f"Disease detected : {suggestion}")
63
64

```



## V. CONCLUSION

The paper mainly focuses on leaf disease detection in various plants. We have used machine learning techniques to train the dataset and also used image processing for the detection and classification of images of both healthy and unhealthy leaves. Thus, various diseases are identified successfully as a result of the proposed system.

## VI. FUTURE WORK

- A. In the future we can also suggest Solutions for the detected diseases.
- B. Future work can focus on improving. More datasets may be used in future work.
- C. In the future we can work on raising the accuracy of the results.



### REFERENCES

- [1] Vishnu S Babu and R. Satheesh Kumar “A Comparative Study on Disease Detection of Plants using Machine Learning Techniques” at 2021 7th International Conference on Advanced Computing and Communication Systems (ICACCS)
- [2] Dhruvi Gosai and Binal Kaka “Plant Disease Detection and Classification Using Machine Learning Algorithm” in 2022 International Conference for Advancement in Technology (ICONAT) Goa, India. Jan 21-22, 2022
- [3] Amrita S.Tulshan and Nataasha Raul “Plant Leaf Disease Detection using Machine Learning” in IEEE Xplore, 10th ICCCNT 2019
- [4] Rajesh Kumar V and Pradeepan K “Identification Of Plant Diseases Using Image Processing And Image Recognition” in IEEE Xplore, IEEE ICSCAN 2021



10.22214/IJRASET



45.98



IMPACT FACTOR:  
7.129



IMPACT FACTOR:  
7.429



# INTERNATIONAL JOURNAL FOR RESEARCH

IN APPLIED SCIENCE & ENGINEERING TECHNOLOGY

Call : 08813907089  (24\*7 Support on Whatsapp)