



IJRASET

International Journal For Research in
Applied Science and Engineering Technology



INTERNATIONAL JOURNAL FOR RESEARCH

IN APPLIED SCIENCE & ENGINEERING TECHNOLOGY

Volume: 12 **Issue:** VII **Month of publication:** July 2024

DOI: <https://doi.org/10.22214/ijraset.2024.62168>

www.ijraset.com

Call:  08813907089

E-mail ID: ijraset@gmail.com

Navigating Wellness: Chatbot-Powered Solutions for Mental Health

Sahil Shah¹, Atul Shione², Yashvardhan Samal³, Arnav Hadpe⁴, Prof. Rohidas Sangore⁵

^{1, 2, 3, 4}MIT ADT University, E-3 28, Nirmal Township, Kalepadal Road, Hadapsar, Pune.

⁵Assistant Professor, Department of Computer Science and Engineering, MIT School of Computing, MIT Art Design and Technology University, Loni, Pune, India

Abstract: *Our overall well-being depends heavily on our mental health, which has received more attention in recent years. At the heart of this platform lies a sophisticated chatbot system, meticulously crafted to provide empathetic and responsive interactions with users. This abstract introduces a pioneering mental health website designed to offer comprehensive assistance to individuals seeking to improve their mental well-being. This chatbot serves as a virtual companion, offering a safe space for individuals to express their thoughts, feelings, and concerns without fear of judgment or stigma. Crucially, this website goes beyond mere conversation; it offers real-time solutions to address mental health challenges head-on. Drawing upon evidence-based practices and therapeutic techniques, the platform provides users with actionable strategies to manage stress, anxiety, depression, and other common mental health issues.*

Keywords: *Mental health, Website, Chatbot, Real-time solutions, Evidence-based practices, Therapeutic techniques, Stress, Anxiety, Depression*

I. INTRODUCTION

In today's fast-paced society, the importance of prioritizing mental well-being cannot be overstated. The essence of this research paper lies in acknowledging and addressing the multifaceted dimensions of mental health. Our aim is to provide invaluable insights and practical tools to empower individuals on their mental health journey. In alignment with this ethos, we embark on an exploration of innovative approaches to mental health support. Leveraging advancements in technology, particularly the integration of chatbot systems and real-time solutions, our research endeavors to redefine the landscape of mental health care. By harnessing these tools, we aspire to offer individuals accessible, empathetic, and effective support in navigating the complexities of mental well-being.

II. MENTAL HEALTH CARE CHATBOT WITH REAL TIME SOLUTIONS

In an era where mental well-being is increasingly prioritized, the paper delves into the innovative use of chatbot technology as a means to provide accessible, efficient, and empathetic support for individuals navigating mental health challenges. The discussion encompasses the role of chatbots in offering real-time solutions, personalized interventions, and supportive interactions tailored to users' unique needs. By leveraging the capabilities of chatbots, the paper aims to shed light on how technology can revolutionize mental health care, empowering individuals to proactively manage their well-being and fostering a more inclusive and supportive community.

A. Benefits of Mental Healthcare Chatbot

- 1) **24/7 Accessibility:** The website and chatbot provide a convenient and accessible platform for individuals to seek support anytime, anywhere, breaking down barriers to accessing mental health care.
- 2) **Personalization:** Through the profile-building process and chatbot interactions, the platform can offer personalized recommendations and interventions tailored to each user's unique needs and preferences, enhancing the effectiveness of the support provided.
- 3) **Anonymity and Privacy:** Users can engage with the chatbot anonymously, allowing them to freely express their thoughts and feelings without fear of judgment or stigma, thus fostering a safe and confidential space for seeking support.
- 4) **Quick Response:** The real-time nature of the chatbot enables users to receive immediate support and guidance whenever they need it, helping to alleviate distress and prevent escalation of mental health issues.
- 5) **Empowerment:** By offering users tools and resources to actively participate in their mental health journey, the platform empowers individuals to take control of their well-being and make informed decisions about their mental health.
- 6) **Continuous Monitoring:** The chatbot can continuously monitor users' progress and provide ongoing support and encouragement, promoting accountability and motivation in maintaining positive mental health habits.

B. Methodology

Our project employs a user-centered approach to create personalized profiles of individuals by engaging them in a series of thoughtfully designed questions about themselves. These questions cover various aspects of their life, including their daily routines, stressors, coping mechanisms, social interactions, emotional experiences, and overall well-being. The methodology consists of the following steps:

1) Designing the Questionnaire

Collaborating with mental health professionals, psychologists, and experts to develop a comprehensive questionnaire that captures relevant information related to mental health. Ensuring that the questionnaire is user-friendly, engaging, and culturally sensitive to accommodate diverse backgrounds and experiences.

Incorporating evidence-based questions and validated scales to assess specific dimensions of mental health, such as depression, anxiety, stress, and emotional well-being.

2) Participant Recruitment

Implementing strategies to recruit participants from diverse demographic backgrounds, including age, gender, ethnicity, and socio-economic status. Utilizing various channels for participant recruitment, such as community organizations, social media platforms, educational institutions, and healthcare facilities. Ensuring informed consent and confidentiality to protect the privacy and rights of participants throughout the data collection process.

3) Data Collection

Administering the questionnaire to participants either through online surveys, face-to-face interviews, or mobile applications, depending on their preferences and accessibility. Providing clear instructions and guidance to participants on how to complete the questionnaire accurately and honestly. Allowing participants to complete the questionnaire at their own pace and in a comfortable environment to encourage candid responses.

4) Data Analysis

Collating and organizing the responses from participants into a structured dataset for analysis. Employing statistical methods and data analytics techniques to analyze the collected data and identify patterns, trends, and correlations related to mental health. Utilizing machine learning algorithms and predictive modeling to identify potential risk factors or indicators of depression, hypertension, or other mental health issues based on the profile analysis.

C. Acknowledgement

We would like to thank everyone who helped in making our project a success.

First and foremost, we would like to thank Prof Rohidas Sangore sir who has served as our project adviser and guide. His unwavering support, encouragement, and direction have been vital in our endeavor. His strong expertise of AI and healthcare technologies was critical to deciding the project's direction and ensuring its success.

We would like to express our heartfelt gratitude to the specialists and healthcare professionals who generously donated their wealth of expertise and insights to improve the chatbot's operation. Their invaluable support has been critical in ensuring the accuracy and trustworthiness chatbot.

We would like to thank our team members, Sahil Shah, Atul Shione, Yashvardhan Samal and Arnav Hadpe for their efforts and devotion during the project. Their dedication to excellence and willingness to collaborate as a team have been critical in making this project a success. We'd also want to thank our friends and family for their ongoing support and encouragement during the endeavour. Their understanding and patience were important to us. Finally, we'd like to thank our educational institution for providing us with the tools and opportunity we needed to complete this project. We hope that our work will make a substantial contribution to the field of healthcare technology, and we are grateful for the opportunity and resources to do so.

III. DISCUSSION

The user-centred approach employed in our project to create personalized profiles represents a significant advancement in the field of mental health support. By engaging individuals in a series of carefully designed questions, we aim to capture a comprehensive understanding of various aspects of their lives, including daily routines, stressors, coping mechanisms, social interactions, emotional experiences, and overall well-being. This methodology encompasses several key steps, each of which contributes to the effectiveness and reliability of our research outcomes.

Firstly, the process of designing the questionnaire involved close collaboration with mental health professionals, psychologists, and experts to ensure its comprehensiveness and relevance. By incorporating evidence-based questions and validated scales, we aimed to assess specific dimensions of mental health, such as depression, anxiety, stress, and emotional well-being, with precision and accuracy. Furthermore, we prioritized the creation of a user-friendly and culturally sensitive questionnaire to accommodate diverse backgrounds and experiences, thus enhancing the inclusivity and accessibility of our research.

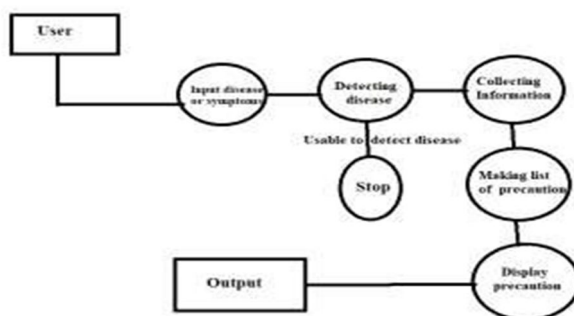
In terms of participant recruitment, our strategies were designed to ensure representation from diverse demographic backgrounds, including age, gender, ethnicity, and socio-economic status. Through partnerships with community organizations, social media platforms, educational institutions, and healthcare facilities, we sought to reach a broad spectrum of individuals who could contribute valuable insights to our research. Additionally, we implemented measures to ensure informed consent and confidentiality, thereby safeguarding the privacy and rights of our participants throughout the data collection process.

During the data collection phase, we offered participants multiple options for completing the questionnaire, including online surveys, face-to-face interviews, or mobile applications, to accommodate their preferences and accessibility. Clear instructions and guidance were provided to facilitate accurate and honest responses, while allowing participants to complete the questionnaire at their own pace and in a comfortable environment encouraged candid sharing of information.

Upon gathering the data, our focus shifted to data analysis, where we collated and organized the responses into a structured dataset for thorough examination. Employing statistical methods and data analytics techniques, we conducted an in-depth analysis to identify patterns, trends, and correlations related to mental health. Furthermore, leveraging machine learning algorithms and predictive modelling, we aimed to identify potential risk factors or indicators of depression, hypertension, or other mental health issues based on the profile analysis.

To Summarize, the methodology outlined in our research paper represents a comprehensive and systematic approach to understanding and addressing mental health challenges. By prioritizing user engagement, inclusivity, and data-driven analysis, we strive to contribute valuable insights and solutions to the field of mental health support, ultimately empowering individuals to lead healthier and more fulfilling lives.

IV. FLOWCHART



V. RESULT

The results of our project underscore the importance of a user-centered approach in understanding and addressing mental health challenges. By prioritizing inclusivity, engagement, and data-driven analysis, we have generated valuable knowledge that has the potential to inform and enhance mental health support initiatives, ultimately empowering individuals to proactively manage their well-being and lead healthier, more fulfilling lives.

VI. CONCLUSION

In conclusion, our user-centered approach to creating personalized mental health profiles has yielded valuable insights into the diverse experiences of individuals navigating mental health challenges. Through collaboration with experts, meticulous questionnaire design, and inclusive participant recruitment strategies, we have gathered comprehensive data that illuminates the complexities of mental well-being. Moving forward, our research has the potential to contribute to the advancement of mental health support initiatives, fostering a more inclusive and empathetic approach to mental well-being. By empowering individuals to actively participate in their mental health journey, we can create a society where everyone has the resources and support they need to thrive emotionally and psychologically.



REFERENCES

- [1] Ebert, D. D., et al. (2015). "Internet and computer-based cognitive behavioral therapy for anxiety and depression in youth: A meta-analysis of randomized controlled outcome trials." PLOS ONE, 10(3), e0119895.
- [2] Torus, J., et al. (2017). "Smartphone ownership and interest in mobile applications to monitor symptoms of mental health conditions." JMIR mHealth and uHealth, 5(4), e64.
- [3] Fitzpatrick, K. K., et al. (2017). "Delivering cognitive behavior therapy to young adults with symptoms of depression and anxiety using a fully automated conversational agent (Woebot): A randomized controlled trial." JMIR Mental Health, 4(2), e19.
- [4] Gaffney, H., et al. (2018). "Opportunities and challenges in online mental health: Recent developments in the treatment of anxiety and depression." Seminars in Neurology, 38(2), 227-236.
- [5] Proudfoot, J., et al. (2010). "The effectiveness of an online cognitive behavioral therapy program for depression and anxiety." Journal of Medical Internet Research, 12(4), e12



10.22214/IJRASET



45.98



IMPACT FACTOR:
7.129



IMPACT FACTOR:
7.429



INTERNATIONAL JOURNAL FOR RESEARCH

IN APPLIED SCIENCE & ENGINEERING TECHNOLOGY

Call : 08813907089  (24*7 Support on Whatsapp)