



# IJRASET

International Journal For Research in  
Applied Science and Engineering Technology



---

# INTERNATIONAL JOURNAL FOR RESEARCH

IN APPLIED SCIENCE & ENGINEERING TECHNOLOGY

---

**Volume:** 10    **Issue:** VIII    **Month of publication:** August 2022

**DOI:** <https://doi.org/10.22214/ijraset.2022.46279>

[www.ijraset.com](http://www.ijraset.com)

Call:  08813907089

E-mail ID: [ijraset@gmail.com](mailto:ijraset@gmail.com)

# Primary Health Care Data Management System for Pregnancy Women

S. Gokula Krishnan<sup>1</sup>, Dr. J. Sreerambabu<sup>2</sup>, S. Kalidasan<sup>3</sup>

<sup>1</sup>PG Scholar, <sup>2</sup>Head of the Department, <sup>3</sup>Assistant Professor, Master of Computer Applications Department, Thanthai Periyar Government Institute of Technology, Vellore-2

**Abstract:** In this design a Primary Health Care data operation for pregnant women, an Android operation is developed. The design is grounded on the features of, Data Analysis and Data operation. This design is grounded on an Android operation for mobile druggies for data operation. All druggies (Croakers, Staff & Case) will have their Unique (USER\_ID) and word for login into the operation. By using the USER\_ID (Croakers, Staff & Case), the croakers and staff can manage the Case data in the database and cases can view their gestation report to their consult croaker (particular) or for their view.

**Background:** Increasing portable possession, practicality and access to mobile-broad band web services has triggered growing interest to harness the potential of portable technology to boost health services in low-income settings. This project aimed toward coming up with Associate in Primary health care data management system that assists midlevel physicians to supply higher maternal health care services by automating the info assortment and decision-making method.

It have check yearly for regular check – ups. when the patient needs to appoint a croaker, they can login to the case login and fix the niche and the croaker can fix whether they available.

This paper describes the event method and technical aspects of the system thought of essential for doable replication. It additionally highlights key lessons learned and challenges throughout implementation.

**Keywords:** Particular Information, Postnatal care, Antenatal care, Medicines, Visit Scheduling.

## I. INTRODUCTION

In recent times the population growth is high in metropolises and the data are no way going to end of period. So far, in this android operation we produce a data's were store in digitally into data base and also we can recoup the data through the case unique id, by using the android operation.

The android operation has separate log in for Staff (croaker) and case. The Staff have their unique id to produce a data for a forthcoming case and modifying the being case, after the revision of a case data, they can view their reports by login in the case runner using their case login. still, consult croaker update the medicine(drug) list in patient database, If the being case have check yearly for regular check – ups. when the patient needs to appoint a croaker, they can login to the case login and fix the niche and the croaker can fix whether they available.

## II. PURPOSE OF THE SYSTEM

The main purpose of this android operation is to ameliorate all the patient particular information and we keep under control the accidental damage of the paper sets. We store all the patient gestation reports update into the android operations.

The main compass of the design all the data's in the single hand.

## III. SYSTEM ANALYSIS

### A. Existing System

There's a web operation for PICME which is used to cost the gestation reports. A stoner (gestation druggies) may not have mindfulness, to view the web gate. This operation is only in the web view, these aren't accessible for everyone. The gestation reports were maintained manually in the written mode. A gestation people can't maintain their records duly. A gestation people can't suitable to appoint the croakers.

### B. Proposed System

Our Android application is a PHC data management system for pregnant women which is based on fetching pregnancy check-up reports monthly wise.



This application can fix the appointments of doctors and it can update whether the doctor is available on the scheduled date. This application can be intimate by a person's mobile phone this application before a day for a doctor's visit and if the medicine is getting finished by a consumer (pregnant woman). If the reports were naturally damaged, we won't worry about it, we have a DIGITAL copy on the database, and we can easily view to our personal or consult doctors. This app's User interface is User friendly to everyone and compatible with android devices.

#### IV. DEVELOPMENT ENVIRONMENT

##### A. Hardware Requirement

Processor Type: I5 3<sup>rd</sup> gen processor.  
Processor Speed: 2.6GHZ  
RAM: 8 GB  
Hard Disk: 500 GB

##### B. Software Requirement

Front end: Android: 2021.2.1(CHIPMUNK), Java  
Back end: MYSQL.  
Operating system : Windows 10.  
Server: Remote- FILEZILA 356.2(MySQL (<http://gokul.orgfree.co>)).

#### V. MODULE DESCRIPTION:

##### A. Doctors, Staff's And Patient Login

The login id is the User ID of every user who uses the application. The id was created by using MySQL (remote server).The doctor and staff user\_id was created by the admin of the database. The patient uses their application\_id (RCHI\_ID) and password as date of birth.

##### B. Pregnancy Women Regestration

A doctor or staff may enroll a patient in women's registration.After enrolling a piece of patient personal information, it will generate a unique\_id(RCHI\_ID).Any time anywhere the doctors can view the reports of patients using the unique\_id(RCHI\_ID).The patient is used in upcoming modules.

##### C. Pregnancy Women Type Of Test Entry

The doctors or staff enter the patient test reports in the particular patient unique\_id(RCHI\_ID).After the reports were updated in the database, the patient can log in the patient log in page for the reports view and consult their personnel(doctors), by using this app.Even the patient won't carry their reports and if the reports are loosed the patient won't get panic, just the login in this application in patient login and View their reports.

##### D. Pregnancy Women Medicine

The doctor's medicine prescription was updated in the database by using the patient Unique\_id(RCHI\_ID).The medicine was updated in the medicine table in a database.Even if the existing doctors were changed by the organizer, the new doctor will verify the patient reports of existing and current medical prescriptions given to the patient by an existing doctor.

##### E. Admin Processes

The admin can maintain all the databases of the doctors and patients, the patient reports were maintained by the admins.

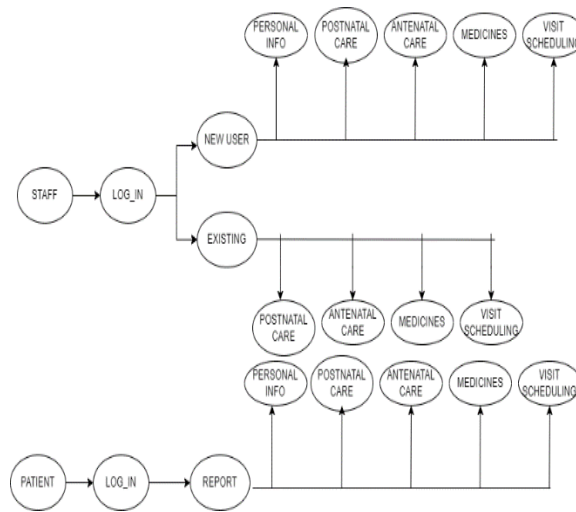
##### F. Treatment Details

The doctors were updated the patient treatment details in database by using the patient unique\_id(RCHI\_ID).Post and present treatment details were updated in the patient database for future references.

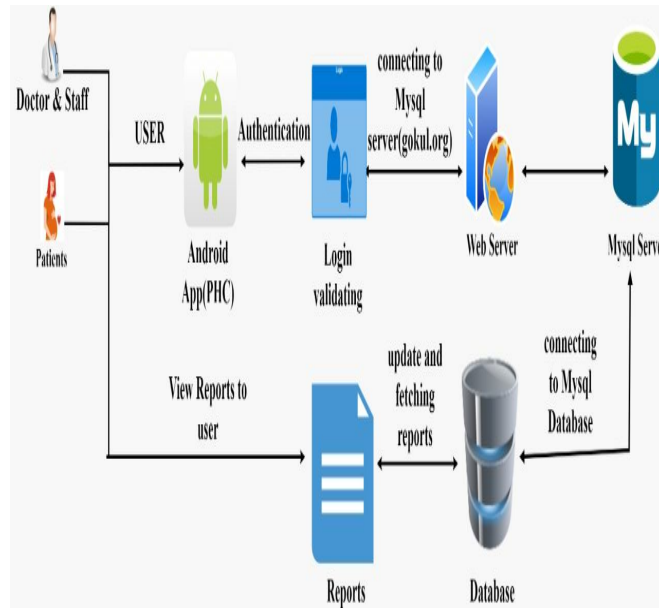
##### G. Visit Scheduling

A patient can fix their appointment on date using our application.Doctors or staffs can allocate the patient appointment date.

H. Data Flow Diagram



VI. SYSTEM ARCHITECTURE



VII. CONCLUSION

This project defines all the information about patients (pregnancy) will be digitalized on this Android application (PhC). In the entire world, everyone’s having the smart phone to communicate where ever in the world, so this technology immensely has the number of users to access the smart phone as a user.

However, the doctor may access to view patient reports by using this application, same as the patient has a particular (unique\_Id) and password as their date of birth to view their gestation reports from their point of view by using this android application.

This android application is not only used to view the gestation reports monthly by consulting the doctors and the patients can fix the appointment of the doctor as per their schedules.

VIII. FUTURE ENHANCEMENT

The medicine duration will be intimated in this application before a day in a notification. By this method of application, we can implement a diabetes patient medicine intake duration. In the future, a patient & doctors can consult in online mode by using this application (Loco matted disability). Even if the patient has any doubt they can text as a query on the patient login of their consulting doctors.



## REFERENCES

- [1] Advance Java Programming (J2EE) - MIT MCA.
- [2] Java The Complete Reference, Seventh Edition.
- [3] Java 2 - The Complete Reference (5th Edition) - Sebiz Finishing School.
- [4] Burton M., 2015. Android App Development For Dummies. John Wiley & Sons.
- [5] Servlet and JSP Programming - IBM Redbooks.
- [6] Cinar, O., 2015. Android quick APIs reference. Apress.
- [7] Haryono, S.A., Thung, F., Lo, D., Jiang, L., Lawall, J., Kang, H.J., Serrano, L. and Muller, G., 2022. AndroEvolve: Automated Android API update with data flow analysis and variable denormalization. Empirical Software Engineering, 27(3), pp.1-31.



10.22214/IJRASET



45.98



IMPACT FACTOR:  
7.129



IMPACT FACTOR:  
7.429



# INTERNATIONAL JOURNAL FOR RESEARCH

IN APPLIED SCIENCE & ENGINEERING TECHNOLOGY

Call : 08813907089  (24\*7 Support on Whatsapp)