



IJRASET

International Journal For Research in
Applied Science and Engineering Technology



INTERNATIONAL JOURNAL FOR RESEARCH

IN APPLIED SCIENCE & ENGINEERING TECHNOLOGY

Volume: CAAA-2018 **Issue:** conference **Month of publication:** April 2018

DOI:

www.ijraset.com

Call:  08813907089

E-mail ID: ijraset@gmail.com

Performance Analysis of Winglet Using CFD

Arunkumar K¹, Chinthamani P², Deeksha Nema³, Nandhini R⁴, Nivetha Shree P⁵

^{1, 2, 3, 4, 5}Department Of Aeronautical Engineering, Dhanalakshmi Srinivasan College Of Engineering And Technology

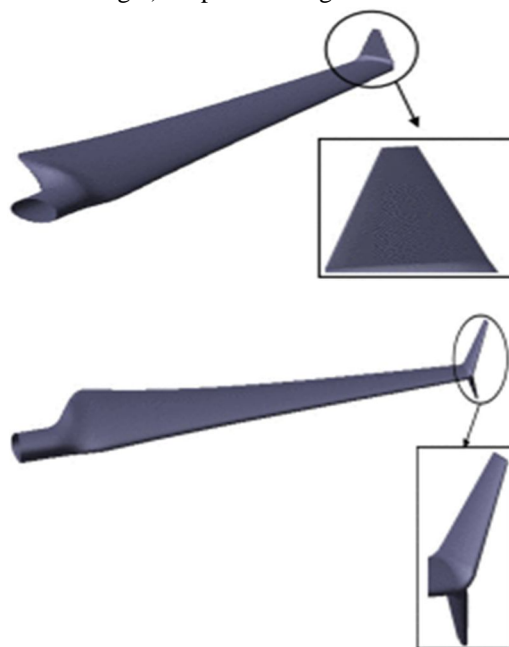
Abstract: The most noticeable features are WINGLET. These are wingtip extensions which reduced the lift induced drag and provide some extra lift. The determination of performance of various shaped WINGLETS on different types to reduce the induced drag by using ANSYS (fluent) by using the winglet reducing induced drag which is generated by lift, over wing due to pressure differences between upper and lower camber.

I. INTRODUCTION

Wing: it is a type of fin that produces lift, while moving through air or some other fluid. As such, wings have streamlined cross-sections that are subject to aerodynamic forces and act as airfoils. Winglet: it is wingtip device which used to describe an additional lifting surface on an aircraft, like a short section between wheels on fixed undercarriage. types of Winglets 1)scimitar 2)blended 3)trapezoidal 4)spiroid winglet 5)sharklet , in this project we are going to use blended and scimitar winglet.

Blended winglet: this type of winglet has a large radius and is designed with a smooth chord variation in the transition area where the wing joins the winglet.

Scimitar: this type of winglet refines the aerodynamic of the existing blended winglet on the Boeing 737NG family. In our project these two winglets analyzing with the 1)forward wing 2)sweptback wing.



II. LITERATURE SURVEY

Multi-Objective Shape Optimization:

- 1) The Pareto front between the wing aerodynamic drag and the wing structural weight for a wing equipped with a winglet.
- 2) In order to estimate the aerodynamic and structural characteristics of a non-planar wing, a quasi-three-dimensional aerodynamic solver is integrated with a quasi-analytical weight estimation method.

A. Induced drag and winglets

- 1) The induced lift is defined as the lift due to the velocities that the lifting vortices induce on themselves. The lift does not increase the induced drag

- 2) This has the same effect as decreasing the induced drag without changing the lift.
- 3) A simple method is given for the evaluation of the the induced lift the rollup of the wake is not considered.
- 4) The results from several parameter variations are presented.

B. An inverse study to design the optimal shape and position for delta winglet vortex generators of pin-fin heat sinks:

- 1) This study using a general purpose commercial code CFD.
- 2) The results indicate that with the designed optimal vortex generators the cooling performance is indeed better than that with the original design vortex generators.

C. Improving the thermal hydraulic performance of a circular tube by using punched delta-winglet vortex generators:

- 1) Vortex generators is proposed in order to improve the thermal hydraulic performance for energy conservation.
- 2) It was found that the Nusselt number increase with the increasing attack angle and decreasing pitch of the delta-winglet vortex generators.

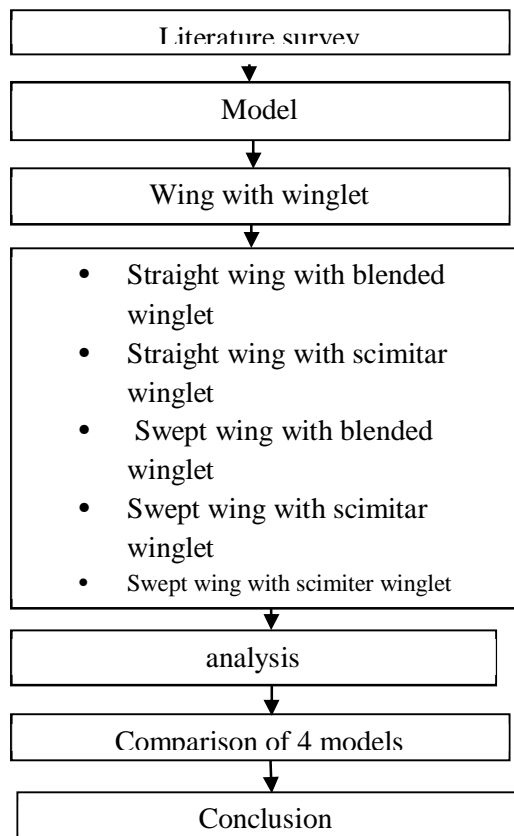
D. Effect of winglets induced tip vortex structure on the performance of subsonic wings:

- 1) This paper presents the comparative study of the effectiveness of the 3 different winglet designs in reducing lift induced drag by changing the number of vortices and vortex distribution at the wingtip
- 2) Computational simulation were performed on ANSYS (fluent) V15 using the Reynolds averaged Navier-stokes equations coupled with the k-ε SST turbulence model to study the three dimensional flow & vortex structure about the half wing.

E. Design and hydrodynamic analysis of horizontal axis tidal stream turbines with winglets:

- 1) Three horizontal axis tidal stream turbines (HATST) with winglets are proposed and investigated to enhance the energy conservation efficiency.
- 2) The power coefficient, the thrust coefficient, the pressure distribution and the tip vortex are analyzed.

III. WORK METHODOLOGY



A. Scimiter Winglet

Basic dimensions:

8 ft 2 inc (tall)

4 ft (wide at the base)

2 ft (narrowing at the tip) & add 5 ft to the tall

5 ft to the tall wing span.

Modified dimensions:

7 ft 1.8 inch (tall)

3.5 ft (wide at the base)

1.5 ft (narrowing at the tip) & add 5 ft to the tall

4 ft to the tall wing span

Fig.5.1 Swept Wing With Scimitar Winglet

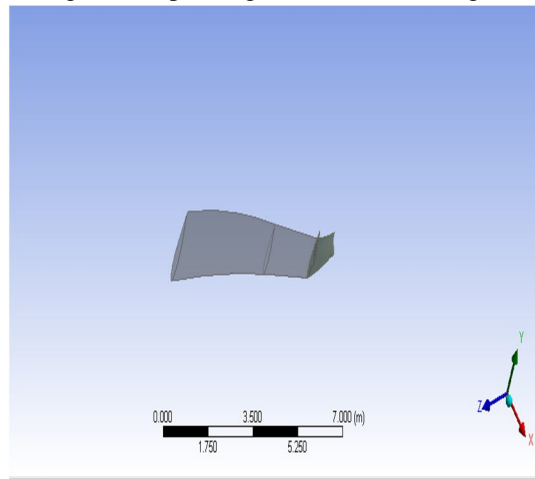


Fig.5.2 Straight Wing With Blended Winglet

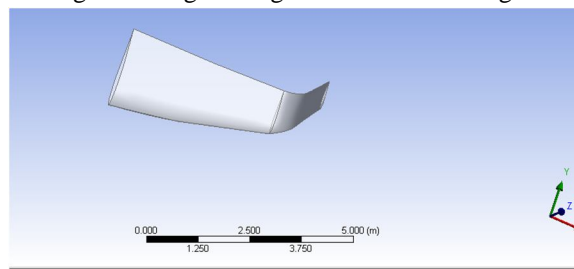


Fig.5.3 Straight Wing With Scimitar

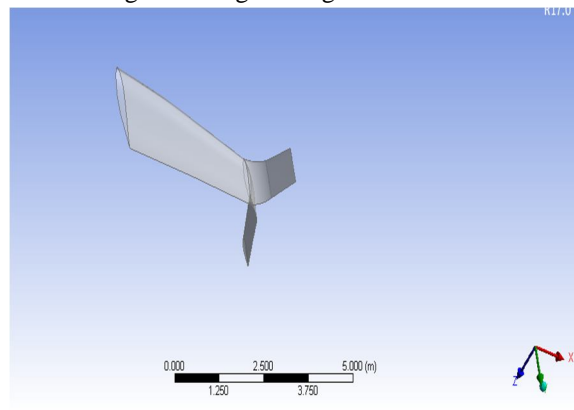
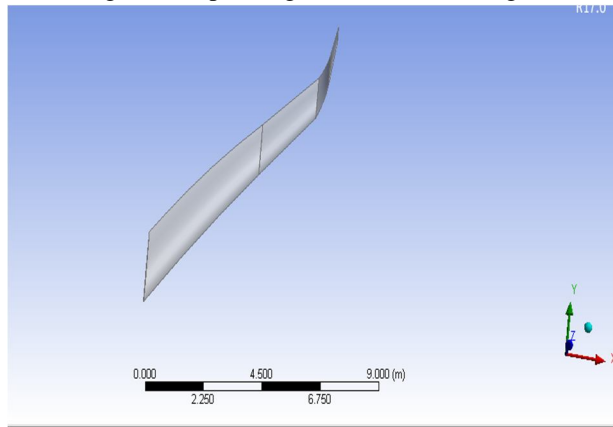


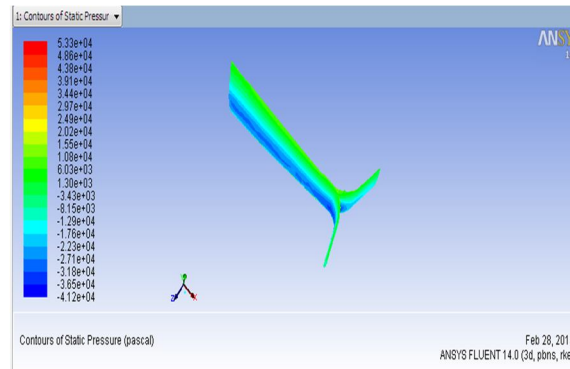
Fig.5.4 Swept Wing With Blended Winglet



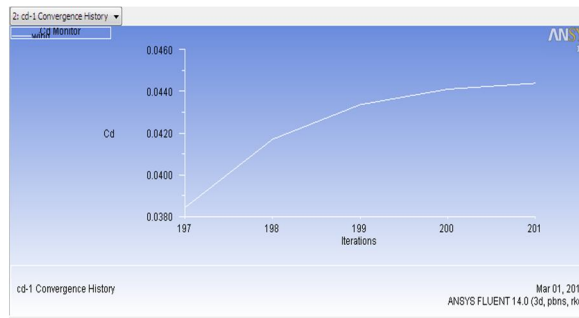
IV. ANALYSIS

A. Swept Wing With Scimitar Winglet

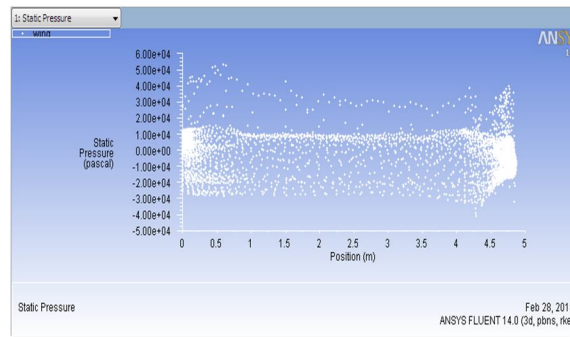
1) Pressure variation



2) Coefficient of drag vs position

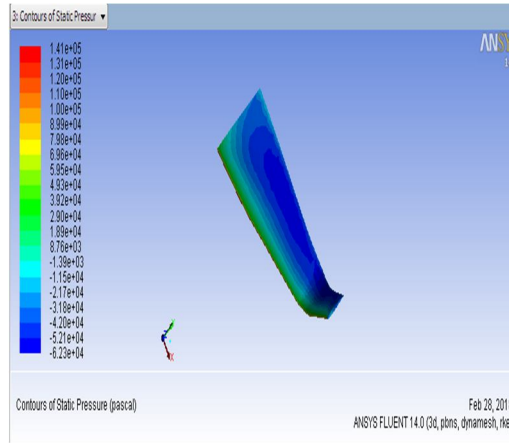


3) Scatter diagram

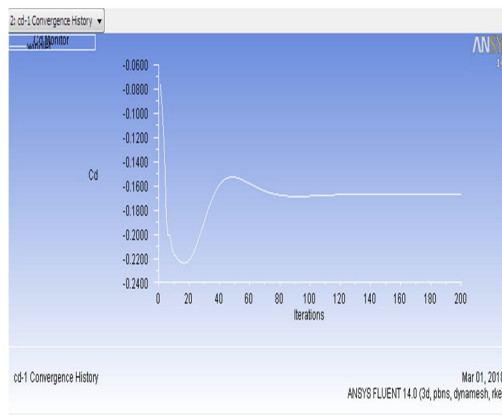


B. Straight Wing With Blended Winglet

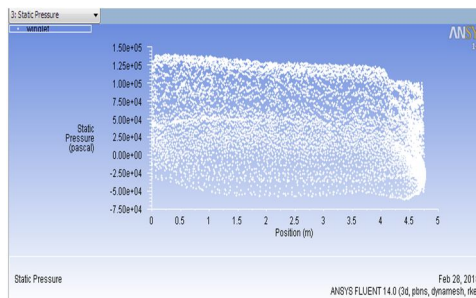
1) Pressure contour plot



2) Coefficient of drag vs iterations

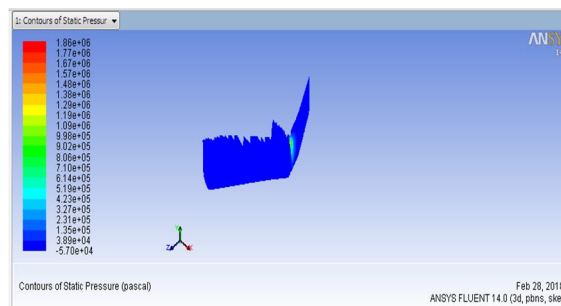


3) Scatter diagram

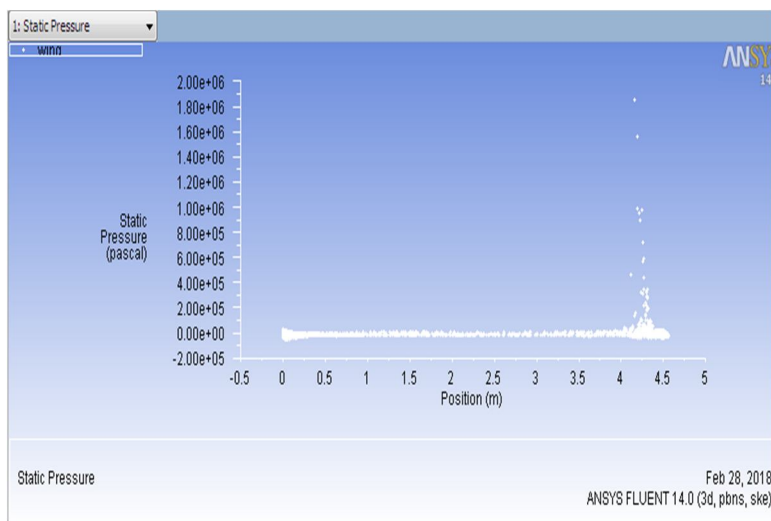


C. Straight Wing With Scimitar

1) Pressure variation

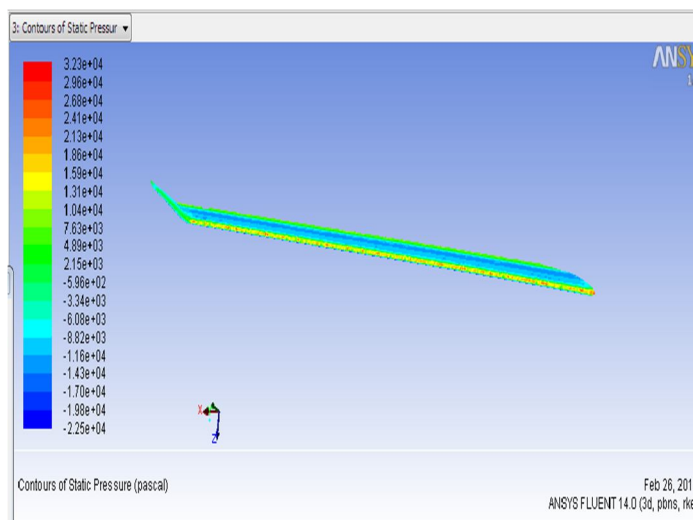


2) Scatter diagram

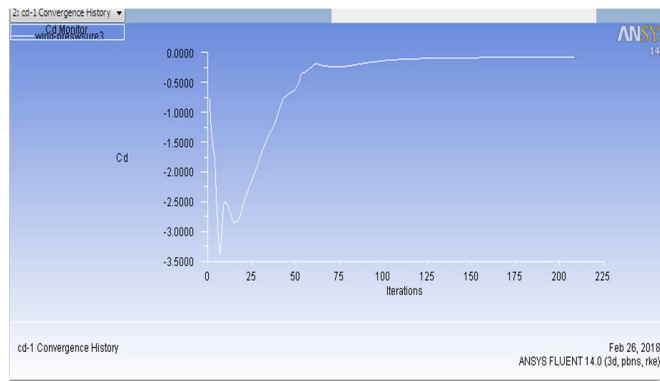


D. Swept Wing With Blended Winglet

1) Pressure variation

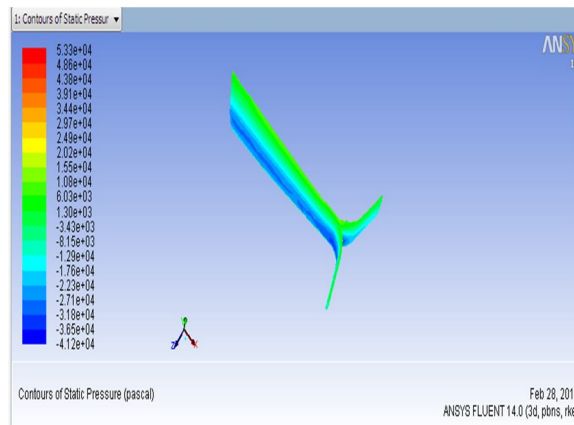


2) Co efficient of drag vs position



V. COMPARISON OF RESULT

- A. On comparison of four design the coefficient of drag value for swept scimitar is more efficient than other designs.
- B. The value of co efficient of drag 0.004



- C. While analyzing the straight wing with scimitar found that pressure is very low which is affecting induced drag.
- D. Sweptback wing with blended winglet analysis showing the gradually pressure variation over the body.
- E. Straight wing with blended winglet analysis found that low pressure applying upper part of the body and high pressure on the lower part of it.

VI. APPLICATION

A. Blended Winglet

- 1) The blended winglet can increase the fuel mileage up to 6-8%.
- 2) The cruise thrust levels are reduced as 3-4%.
- 3) Winglets are also applied to other business aircraft.
- 4) Its designed to increase payload-range on hot and high retrofit.

B. Scimitar Winglet

- 1) Additional fuel burnt saving over the blended winglet.
- 2) It provides the perfectly balanced winglet that maximize the overall efficiency of the wing.

REFERENCES

- [1] “Winglet multi-objective shape optimization” referred AliElham^aMichel J.L.van Torren^s Delft University of Technology, Kluyverweg 1, 2629HS Delft, The Netherlands University of South Carolina, Columbia, SC 29201, USA Received 18 February 2014 Revised 24 April 2014, Accepted 7 May 2014, Available online 5 June 2014
- [2] “Design and hydrodynamic analysis of horizontal axis tidal stream turbines with winglets” author linksYiruRen^{ab}BingwenLiu^{ab}TiantianZhang^cQihongFangState Key Laboratory of Advanced Design and Manufacturing for Vehicle Body, Hunan University, Changsha, Hunan, 410082, China
- [3] College of Mechanical and Vehicle Engineering, Hunan University, Changsha, Hunan, 410082, China
- [4] Strategic Development Department, China Three Gorges Corporations, Beijing, 100038, China ,Received 9 March 2017, Revised 29 August 2017, Accepted 24 September 2017, Available online 29 September2017
- [5] “An inverse study to design the optimal shape and position for delta winglet vortex generators of pin-fin heat sinks” author linksCheng-HungHuangPo-ChingChiang
- [6] Department of Systems and Naval Mechatronic Engineering, National Cheng Kung University, Tainan, 701, Taiwan, ROC Received 12 January 2016, Revised 22 April 2016, Accepted 7 June 2016, Available online 21 June 2016
- [7] “Improving the thermal hydraulic performance of a circular tube by using punched delta-winglet vortex generators “Author links open overlay panel YonggangLei^a FangZheng^a ChongfangSong^a YongkangLyu^b College of Environmental Science and Engineering, Taiyuan University of Technology, Taiyuan, Shanxi 030024, China Key Laboratory of Coal Science and Technology, Ministry of Education and Shanxi Province, Taiyuan, Shanxi 030024, China Received 21 December 2016, Revised 22 February 2017, Accepted 28 March 2017, Available online 8 April 2017.
- [8] “Induced drag and winglets” R.Eppler, institute a fur Mechanic, university, Stuttgart, Pfaffenwaldring 9, D-70569 Stuttgart, Germany Received 17 July 1995, revised 19 December 1995, available online 11 May 2004.
- [9] “Effect of winglets induced tip vortex structure on the performance of subsonic wings” author Gautama narayan, bibin john School of mechanical engineering VIT University, Vellore, Tamilnadu 632014, India Received 22 September 2015, revised 26 July 2016, accepted 28 August 2016 available online 1 September 2016.
- [10] Referred CFD book by H.VERSTEEG.



10.22214/IJRASET



45.98



IMPACT FACTOR:
7.129



IMPACT FACTOR:
7.429



INTERNATIONAL JOURNAL FOR RESEARCH

IN APPLIED SCIENCE & ENGINEERING TECHNOLOGY

Call : 08813907089  (24*7 Support on Whatsapp)