



IJRASET

International Journal For Research in
Applied Science and Engineering Technology



INTERNATIONAL JOURNAL FOR RESEARCH

IN APPLIED SCIENCE & ENGINEERING TECHNOLOGY

Volume: 6 Issue: VI Month of publication: June 2018

DOI: <http://doi.org/10.22214/ijraset.2018.6311>

www.ijraset.com

Call:  08813907089

E-mail ID: ijraset@gmail.com

Simulation & Analysis of Power Convertors using Software Tools – A Review

M. Mahendran¹, A.S.Viswanathan²

^{1,2}Department of Electrical & Electronics Engineering Sri Chandrasekharendra Saraswathi Viswa Mahavidhyalaya, Tamil Nadu, India

Globally the teaching process has changed because of the incomparable growth in the computing technologies and tools. The Design and development Industry requires the students with the enhanced knowledge of software tools. Hence it is mandatory for the educational institutions to equip students with additional software knowledge. Also the use of software's in teaching learning process helps the students with better understanding of complex concepts easily, learn the design concepts and using multimedia concepts along with technical software's helps the students to visualise the operation of electrical and electronics circuits. Some of the software's we use are Matlab, Simulink, Pspice, Psim, MiPower, Magnet, VI tools etc... One such tool we use to teach complex power electronics circuits is PSIM. This article explains the operation of Fully controlled rectifier a simple power converter circuits using PSIM.

Key words: Software, PSIM, Controlled converter, R Load, L Load, Back emf Loads.

I. INTRODUCTION

Power Electronics is a subject which is primarily interdisciplinary in nature, comprising of Power, Electronics and Control, which are three major technological areas and finds its vast applications in Industrial drives control from process industries to automotives, computers to home appliances. Hence forth the importance of power electronics and control has matured vastly. Before the development of Power electronic components, its design is of primary importance relating to the applications. Software based computer simulation can help the design engineers to create a error free design before it goes to the development stage. Hence forth the teaching the simulation concepts to the students in the Universities are of vital for them to find employment in those fields. We use simulation software such as Matlab, Simulink, Pspice, Psim, MiPower, Magnet and Labview as software tools to teach various concepts in electrical engineering to our students. Most important tool we use to teach Power electronics Concepts is PSIM from PowerSim Tech Corporation, which the students finds as a flexible tool to learn. The advantage of this tool is the ease with which we can change the variables to learn the behavior of the system. In this article we have simulated the Full bridge rectifier circuit under various load conditions to estimate its performance parameters.

II. POWER CONVERTORS

Power converters are a type of semiconductor based conversion devices which is used to convert the power from of AC to DC, AC to AC, DC to AC, DC to DC. These topologies are used to modify the characteristics of electrical power supply to load components meeting the requirements of a particular application. In these convertor circuits devices, SCR, MOSFET, IGBT or BJT can be used as semiconductor devices. In our experimentation we used SCR as the power device. The SCR is triggered at a particular firing angle α in both the positive and negative half cycle to control the output voltage.

III. AC – DC FULL BRIDGE RECTIFIER CIRCUIT

The single phase fully controlled rectifier consists of 4 SCRS connected in the bridge form. The experimentation is carried out with R, RL and RLE (Motor) Load. Here for the purpose of explanation, rectifier with resistive load is given. The simulation is carried out for all the three types of load.

When the supply is ON and the firing or gate signals are given to thyristors, the circuit operates and produces output. The Turn-off of the device happens generally, when the current through the device reaches zero or the supply reaches natural zero and the device gets reverse biased.

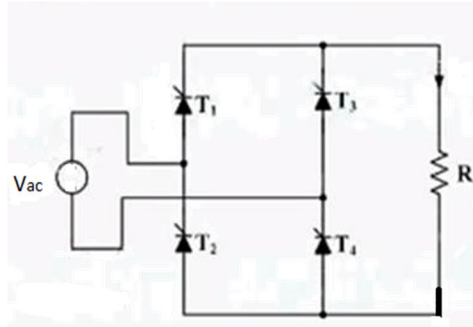


Fig. 1 : Single Phase Full Bridge Rectifier with R – Load

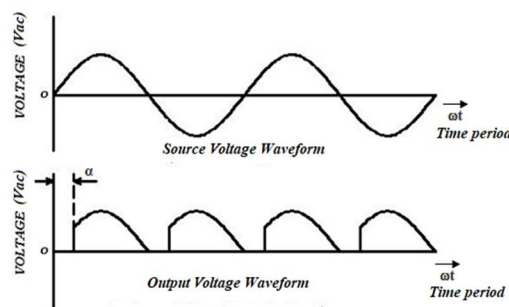


Fig. 2 : Single Phase Full Bridge Rectifier – R Load– Supply and Output Voltage Waveform

A. During Positive half Cycle

The supply is in positive half cycle of sinusoidal input;

At a time instant of $\omega t = 0$. Thyristors T1 & T4 are in ON period due to forward biasing and T2 and T3 are in off mode due to reverse bias. T1 and T4 won't conduct.

At a time period $\omega t = \alpha$, firing or gate signal is given to the Gate terminal of the SCR. At this time junction breakdown happens and the thyristors T1 and T4 conducts

$$V_o = V_{ac}$$

$$I_o = \frac{V_o}{R}$$

$$I_o = \frac{V_{ac}}{R}$$

At a time period $\omega t = \pi$, the supply reaches natural zero and hence T1 and T4 turns reverse biased and hence don't conduct

B. During Negative Half Cycle

The Supply is in the negative half cycle of sinusoidal input;

At a time period $\omega t = \pi$. Thyristors T2 & T3 are ON due to forward biasing and T1 and T4 are in off mode due to reverse bias. T2 and T3 won't conduct.

At a time period $\omega t = \pi + \alpha$, firing or gate signal is given to the Gate terminal of the SCRs T2 and T3. At this time junction breakdown happens and the thyristors T2 and T3 conducts

$$V_o = V_{ac}$$

At a time period $\omega t = 2\pi$, the supply reaches natural zero and hence T3 and T2 turns reverse biased and in off mode and the cycle repeats. The waveform explaining the operation is given below in Fig.2.

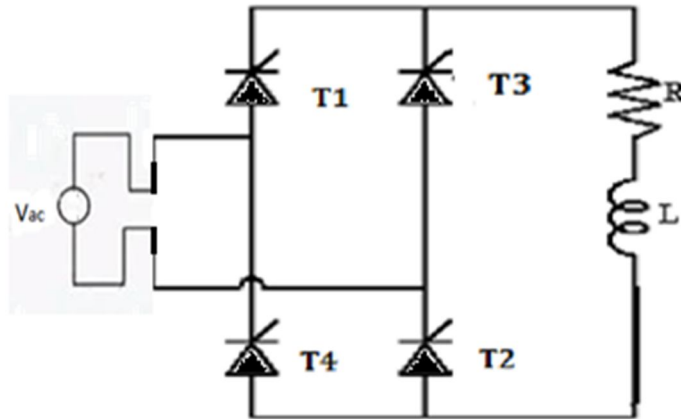


Fig. 3 : Single Phase Full Bridge Rectifier with RL – Load

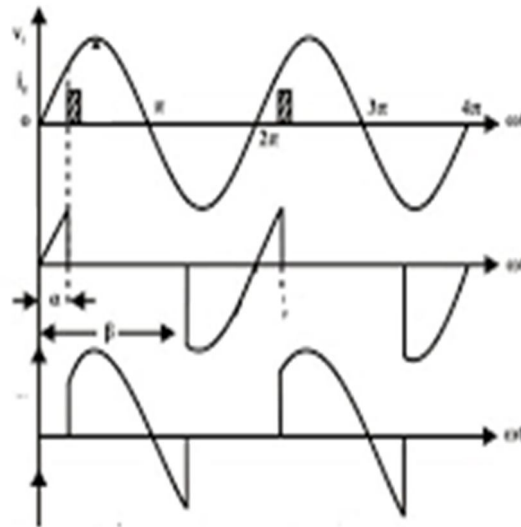


Fig. 4: Single Phase Full Bridge Rectifier – RL Load– Supply and Output Voltage Waveform

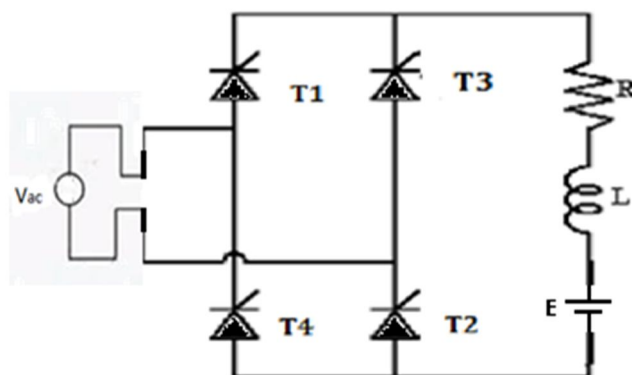


Fig. 5: Single Phase Full Bridge Rectifier with RLE – Load

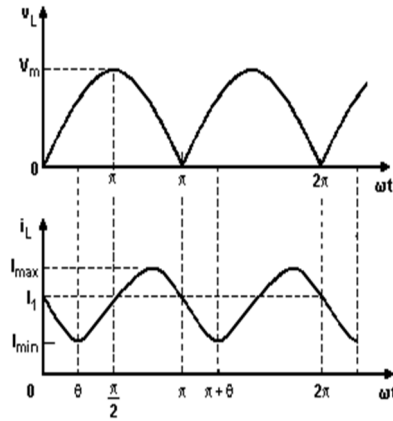


Fig. 6: Single Phase Full Bridge Rectifier – RLE Load– Supply and Output Voltage Waveform

IV. SIMULATION

The simulation is carried out in PSIM software. PSIM is a electronic simulation software exclusively designed for power electronics, motor drives and its control strategies in both open loop and closed loop. With high speed simulation and user friendly GUI, PSIM provides a powerful simulation package for power electronics studies. Fig. 7 - 12 shows SCR based full bridge convertor circuit diagram for all the three loads in PSIM and its output waveforms. The design Parameters taken are supply voltage V_s as 100V, For R Load circuit, Resistance is 1kohm, for RL Load Inductance L is taken as 1m Henry and for RLE Load the Emf is taken as 100 V. The SCR switching frequency is 1kHz. Single phase Full controlled R load:

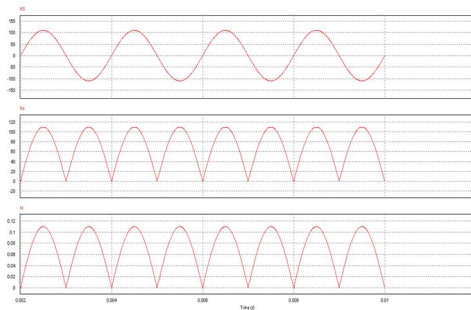


Fig. 7: Circuit Diagram of R -Load

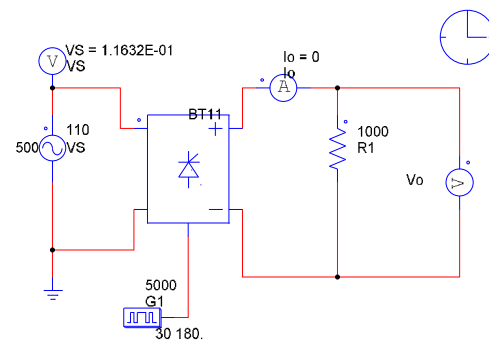


Fig. 8. Waveforms for R - Load

Single phase Full controlled RL load:

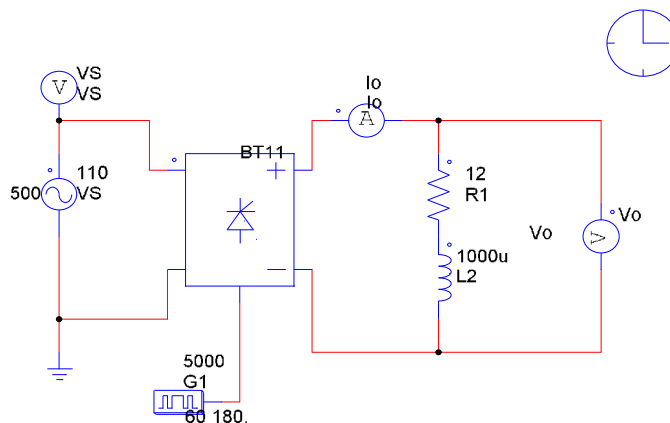


Fig. 9: Circuit Diagram of RL -Load

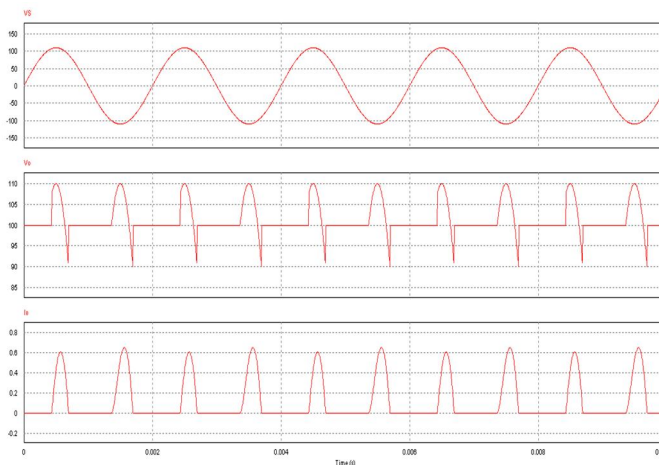


Fig. 10: Waveforms for R - Load

Performance Parameter	R load	RL load	RLE load
Avg. load voltage	193.21 V	179.33 V	179.33 V
Avg. load current	0.19 A	.18 A	0.079 A
RMS. load voltage	226.79 V	229.5 V	230.2 V
RMS .load current	0.23 A	.22 A	0.13 A
Input P.F	.98	.954	0.999
Efficiency	70.37	63.93	47.38
Form Factor	1.174	1.279	1.283
Ripple Factor	0.61	0.797	0.804
P _{dc}	36.71 W	32.28 W	14.167 W
P _{ac}	52.16 W	50.49 W	29.9 W

Single phase Full controlled RLE load:

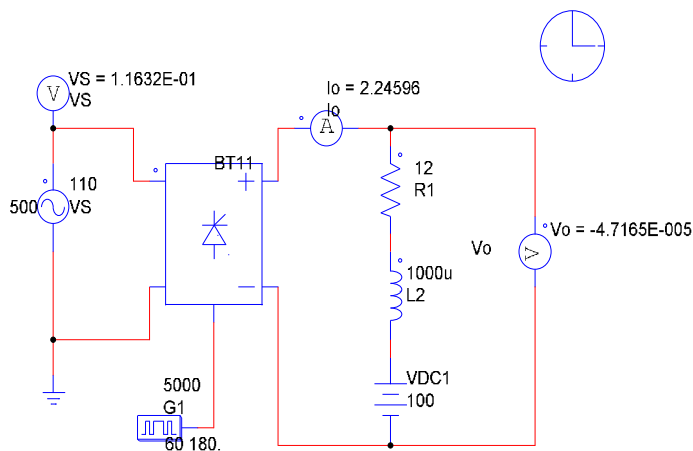


Fig. 11: Circuit Diagram of RL -Load

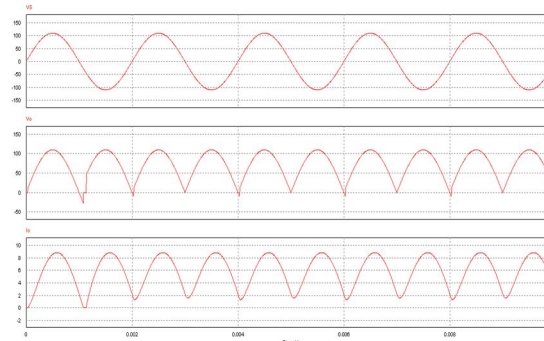


Fig. 11: Circuit Diagram of RL -Load

After simulation, the parameters are measured and noted. The parameters calculated are given below in the table with their values.



V. CONCLUSION

The design of fully controlled single phase converter was simulated in PSIM software. The circuit was designed and waveforms are generated for the measurement of performance parameters. The performance parameters was calculated and tabulated. The vast development of computer tools gives a new approach to this simulation activity. With PSIM's interactive simulation capability, parameter values can be easily modified and we can also design and simulate digital power supplies using PSIM's Digital Control Module. The digital control can be implemented in either block diagram or as custom C code.



10.22214/IJRASET



45.98



IMPACT FACTOR:
7.129



IMPACT FACTOR:
7.429



INTERNATIONAL JOURNAL FOR RESEARCH

IN APPLIED SCIENCE & ENGINEERING TECHNOLOGY

Call : 08813907089  (24*7 Support on Whatsapp)