



# **iJRASET**

International Journal For Research in  
Applied Science and Engineering Technology



---

# **INTERNATIONAL JOURNAL FOR RESEARCH**

IN APPLIED SCIENCE & ENGINEERING TECHNOLOGY

---

**Volume: 7      Issue: V      Month of publication: May 2019**

**DOI: <https://doi.org/10.22214/ijraset.2019.5586>**

**[www.ijraset.com](http://www.ijraset.com)**

**Call:  08813907089**

**E-mail ID: [ijraset@gmail.com](mailto:ijraset@gmail.com)**

# A Study of Flood-Plain Analysis using HEC-RAS Software

Raghvendra M. Nayak<sup>1</sup>, Prakhar M. Mandloi<sup>2</sup>, Sumedh S. Jain<sup>3</sup>, Yashkumar H. Pawara<sup>4</sup>, Sunil Deshpande<sup>5</sup>

<sup>1, 2, 3, 4, 5</sup>Department of Civil Engineering Dr. D. Y. Patil Institute of Technology, Pune, Maharashtra, India

**Abstract:** Dams have proven to be beneficial for mankind serving to various basic needs of human life. Also, being a massive structure, flooding due to failure of dams is supposed to be one of the catastrophic events witnessed. One of the forms of flooding is identified as discharge flooding. This paper emphasizes on how computations of discharge induced flood can be carried out using Hydrologic Engineering Centre's River Analysis System (HEC-RAS) software to know the details of parameters causing destruction.

**Keywords:** ArcGIS, Digital Elevation Model (DEM), Discharge flood modelling, Flood Plain Analysis, HEC-RAS 2D model, Khadakwasla Dam.

## I. INTRODUCTION

Dams are constructed to serve various needs of human life like domestic, irrigation, industrial, hydro-electricity generation, etc. However when the dam reaches its full capacity the water is required to be discharged in order to ensure the safety of the dam irrespective of the effects of discharge on the downstream side of the dam. This event can prove to be destructive for the human settlements as well as loss of property on the downstream side. In recent years, due to industrialisation and urbanisation, the damage caused to the environment resulting to irregularity of rainfall pattern and several events of cloud bursting. These situations leading to increased runoff into reservoir making it necessary to discharge excess water frequently for dam's safety. Hence it becomes necessary to study the details of discharge induced flood on the downstream side of the dam. This paper deals with discharge induced flood plain mapping using HEC-RAS software for Khadakwasla dam. Using HEC-RAS software following parameters will be studied.

- A. Flow Depths at different reaches
- B. Flow Velocity at different reaches
- C. Lateral spread of the flow in the defined area of study.

## II. LITERATURE REVIEW

Several research papers were reviewed to study how the HEC-RAS can be used for its applications. Reviewing papers helped in determining and limitation and the scope of the study. In literature study, the results forecasted in the research papers were also compared with the real incidents that had happened in recent years, ascertaining the accuracy of the software. The results in research paper on Dam Break Analysis of Idukki Dam using HEC RAS found matching to recent event happened in Kerala floods.[10]

## III. METHODOLOGY

### A. Appropriate Selection Of Software

After exploration, appropriate software selection amongst several applicable softwares (like SOBEK CM, MIKE 11, etc.) that can be utilised to carry out computations depending on the availability and reliability of the software was carried out in the beginning and finally, HEC-RAS software was finalized being open software for utilization and most reliable till date.

### B. Discussions with Expert

Since a number of software were available for computing, it was necessary to consult experts from this field. 2 experts working with similar field of interest were consulted:

- 1) Prof. Mrs. Mrunal Joshi, Assistant Professor SCOE Pune.
- 2) Sr. Engineer Mr. Sanjay Heganna, Irrigation Department Pune, Govt. of Maharashtra.

*C. Understanding Necessary Inputs*

Carrying out trial attempts made it easy to understand the minutes of HEC-RAS software and also the necessary inputs like Digital Elevation Model (DEM), flow pattern, discharge details, etc. were recognized.

*D. Selection of Study Area*

Amongst several dams available to be studied like Ujjani, Pawana, Khadakwasla, Vir, Idukki, etc. finally Khadakwasla Dam was selected to be studied since it was physically approachable and the inputs necessary for HEC-RAS could be conveniently acquired for studying.

*E. Collection Of Data And Computation Procedure*

Several data needed to be collected and further the computation was carried out. Following is the procedure of carrying out computation:

- 1) Toposheet of the area of study was obtained from the Survey of India Department, Pune.

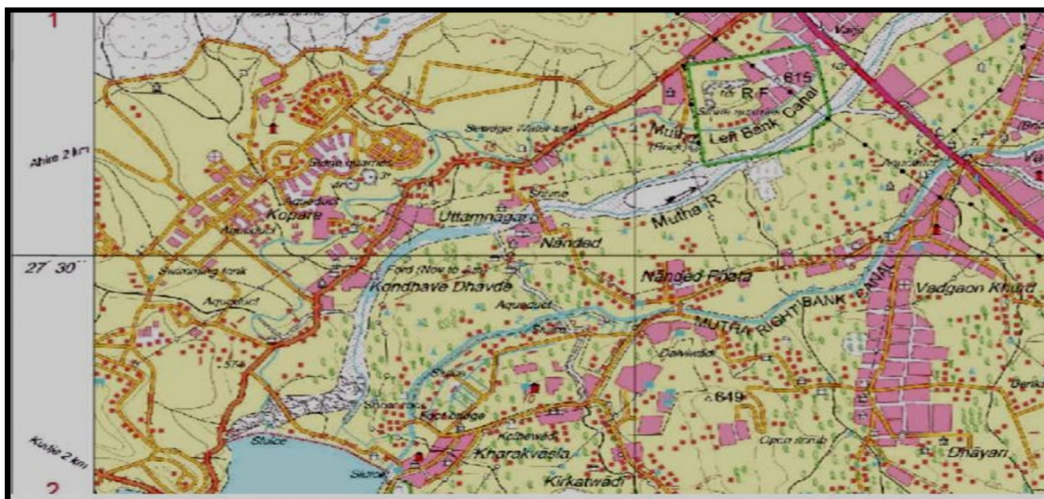


Fig. 1 Part of Toposheet tile number 47F/15 of Khadakwasla region

- 2) The Toposheet was further used to create Digital Elevation Model (DEM) of the study area which will be used as an input to the software. In order to generate DEM, georeferencing of the map was necessary which was accomplished using ArcGIS. The necessary data like elevation, slope, cross sections, etc of the region under study is retrieved from DEM. DEM input to the software assures accuracy in the results since DEM reflects on the real-time data which is acquired from satellite imagery. Different colors in the DEM symbolize difference in elevation of that region. Below figure Fig. 2 shows DEM of study area.

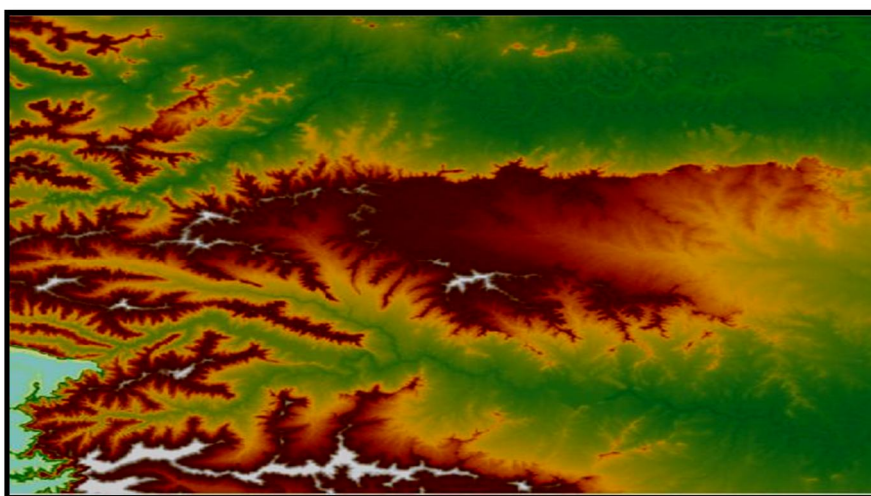


Fig. 2 Digital Elevation Model (DEM) of Khadakwasla region

- 3) In the image below Fig. 3, two lines shown, namely red and blue line, are predicting the zone of flooding as mentioned in govt. records. This line was used as a reference against the study topic.



Fig. 3 Current Flood line marked in Government documents.

- 4) After providing the geometric details, flow details and carrying out unsteady flow analysis, the following results were obtained:

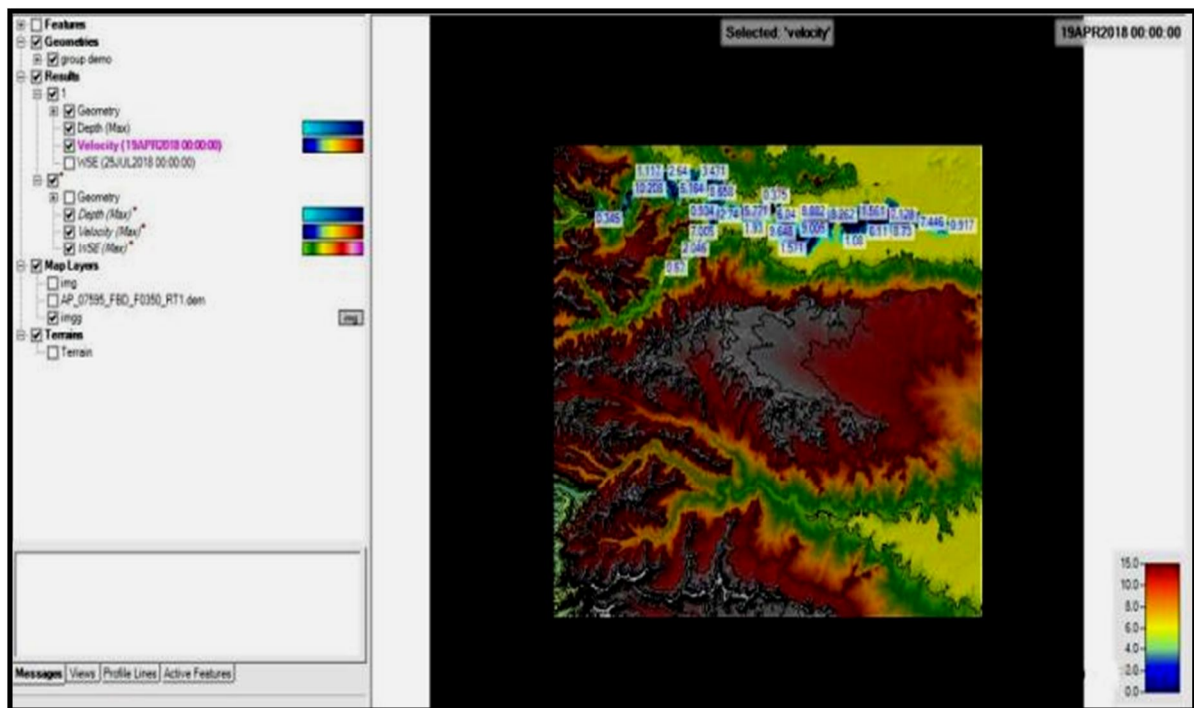


Fig. 4 Max. Depth and lateral spread of water along the downstream side of the dam in metres.

NOTE: All the computations are carried out on the software with data available at the time of computations. Data which was not available was replaced by hypothetical data for study purpose. The hypothetical data used for computation does not necessarily resemble with the real-time data and the authenticity of the same must not be taken into consideration for this hypothetical data.

#### IV. CONCLUSIONS

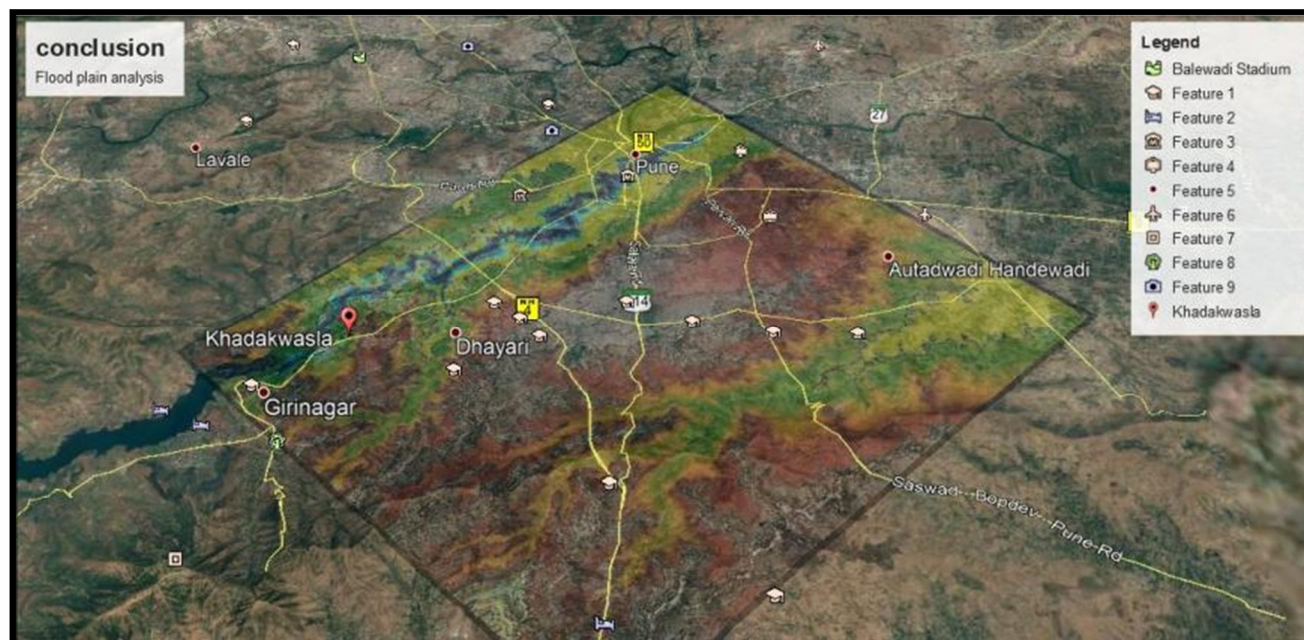


Fig. 5 Flood line over the flood affecting region

It is evident from the above image that the water that flows on the downstream side will be exploiting the human settlements available beyond the flood line. This demonstrates that there is a severe need to revise the flood line which was marked earlier for Khadakwasla region. Similarly remapping of flood line for all metropolitan cities across the nation is also necessary in order to decrease the loss of human lives and property due to flooding.

#### REFERENCES

- [1] "Dam Break Modeling by using HEC-RAS A Case Study of Attabad Lake Dam on Hunza River" by Saqib Ehsan\*, Sohail Afzal, Muhammad Usman, Maaz Rasheed, Waqas Jamil, NFC-IEFR Journal of Engineering and Scientific Research, ISN2222-1247
- [2] "Study and analysis of Asa river hypothetical dam break using HEC-RAS" by O. S. Balogun and H. O. Ganiyu, Nigerian Journal of Technology (NIJOTECH) Vol. 36, No. 1, January 2017, pp. 315 – 321.
- [3] "Modelling approach for gravity dam break analysis" by Mourad Boussekine and Lakhdar Djemili, Journal of Water and Land Development 2016, 30 (VII-IX):29-34.
- [4] "Dam Break Analysis of Pawana Dam" by S. R. Kulkarni and Seema A. Jagtap, International Journal of Recent Advances in Engineering & Technology (IJRAET) ISSN (Online): 2347 - 2812, Volume-5, Issue -1, 2017.
- [5] "Dam breach inundation analysis using HEC-RAS and GIS two case studies in British Columbia, Canada" by Ahmad Asnaashari, Dwayne Meredith and Max Scruton Canadian Dam Association CDA 2014 Annual Conference Banff, Alberta October 4 – October 9, 2014
- [6] "Flood modeling of river Godavari using HEC-RAS" by Sunil Kute, Sayali Kakad, Vrushali Bhoje and Akshada Walunj, IJRET: International Journal of Research in Engineering and Technology e-ISSN: 2319-1163 | p-ISSN: 2321-7308
- [7] "Dam break analysis of Kalyani dam using HEC-RAS" by B .Balaji and Sanjeet Kumar, International Journal of Civil Engineering and Technology (IJCIET) Volume 9, Issue 5, May 2018, pp. 372–380, Article ID: IJCIET\_09\_05\_041
- [8] "Two Dimensional Dam Break Flow Study Using HEC-RAS for Ujjani Dam" by Mrunal M. Joshi and S. S. Shahapure, International Journal of Engineering and Technology (IJET) Vol 9 No 4 Aug-Sep 2017
- [9] "Dam break analysis for Serra degli Ulivi dam" by L. Canale and D. Wüthrich.
- [10] "Dam Break Analysis of Idukki Dam using HEC-RAS" by Abhijith R, Amrutha G, Gopika Vijayaraj and Rijisha T V, International Research Journal of Engineering and Technology (IRJET) e-ISSN: 2395 -0056 Volume: 04 Issue: 07 | July-2017.
- [11] "Study of Two Dimensional Dam Break Analysis Using HEC-RAS for Vir Dam" by Mrunal M. Joshi and Dr. S. S. Shahapure, International Journal of Engineering Technology Science and Research IJETSRS ISSN 2394 – 3386 Volume 4, Issue 8 August 2017
- [12] "Dam Break Flood Risk Assessment for Laiyang City by Li Changzhi, Wang Hong, Chi Zhixue, Yang Yongfeng, Rao Zhengfu and Cope Mike", Journal of Geological Resource and Engineering 4 (2014) 189-199 doi:10.17265/2328-2193/2014.04.001.



10.22214/IJRASET



45.98



IMPACT FACTOR:  
7.129



IMPACT FACTOR:  
7.429



# INTERNATIONAL JOURNAL FOR RESEARCH

IN APPLIED SCIENCE & ENGINEERING TECHNOLOGY

Call : 08813907089  (24\*7 Support on Whatsapp)