



# **iJRASET**

International Journal For Research in  
Applied Science and Engineering Technology



---

# **INTERNATIONAL JOURNAL FOR RESEARCH**

IN APPLIED SCIENCE & ENGINEERING TECHNOLOGY

---

**Volume: 8      Issue: V      Month of publication: May 2020**

**DOI: <http://doi.org/10.22214/ijraset.2020.5389>**

**[www.ijraset.com](http://www.ijraset.com)**

**Call:  08813907089**

**E-mail ID: [ijraset@gmail.com](mailto:ijraset@gmail.com)**

# Sewage Workers Smart Monitoring System

E. M. Aswin<sup>1</sup>, C. Jithesh kumar<sup>2</sup>, A. R. Bharath<sup>3</sup>, N. Pradeep raj<sup>4</sup>, Dr. M. Shanthi<sup>5</sup>

<sup>1, 2, 3, 4</sup>Final year, Dept. of ECE, Kumaraguru College of Technology

<sup>5</sup>Associate Professor, Dept. of ECE, Kumaraguru College of Technology

**Abstract:** Many cities in India have underground drainage system which requires proper maintenance. The drainage systems are mostly maintained by the Municipal Corporation in various cities. In most part of the city, sewage workers are employed for cleaning the drainage system by various corporations. The sewage workers face various issues while working inside the manhole like exposure to toxic gases and shortness of oxygen due to more presence of methane. Sewage workers monitoring system monitors the health status of these workers and also they monitor the level of toxic gases inside the manhole which helps the workers to escape in case of any increase in the gas levels. This system is also used to detect any blockage inside the manhole and prevents clogging. This system makes use of sensors like air quality sensor, hydrogen sulphide sensor and gas sensor for monitoring the levels of various gases. The health status is monitored with the help of pulse sensor. The system provides real time monitoring of these data through Internet of Things. This real time monitoring is done through the thing speak software which sends data to the cloud from the controller. The whole system consists of two units one is to monitor the gases inside the manhole and the other is used to monitor the pulse rate of the involved worker. This system can be used in manholes where the workers perform their work which will assist them by monitoring their pulse and also alert if there is any deviation from the threshold limit. So this could help various Municipal Corporation in cities for their maintenance and other related works related to underground drainage system.

**Keywords:** Sewage, Toxic Gases, Methane, Oxygen, Thing speak, Monitoring, Threshold Limit.

## I. INTRODUCTION

India has been undergoing rapid urbanization since independence. Drainage system and sewage system has become an important priority in the Indian context due to various factors like increase in population growth, urbanization and industrialization. These factors affect the basic drainage and sewage system of our country. The sewage system is maintained by Municipal Corporation in India. The sewage workers or manual scavengers face various issues like diarrhoea, asphyxia and respiratory system problems due to absence of any safety measures taken by them. This system plays a major role for sewage workers by taking care of their work and also alerts them in case of raise in the level of gases beyond the threshold limit. The various paper developed earlier has provided many simplistic approaches but this system is very cost effective and executes real time monitoring of various data through the help of Internet of Things. Several papers have executed Wireless sensor networks for real time implementation but IoT is far better when compared to this technology and this system can be used for the safety of sewage workers.

After Urbanization, there has been great increase in the population of major cities in India which has direct impact on the drainage and sewage system. The maintenance of the sewage system is very crucial in the present days because if they are not maintained properly, it could affect the environment. A survey has showed that 60% of the waste water has sewer network in India while remaining are untreated and are released into the water bodies[6]. Most of the times, the sewage or drainage is mostly cleaned with the help of sewage worker or manual scavengers without considering the health impacts and other related issues while working inside the manhole. There is an estimate that around 1.2 million scavengers in our country and government have taken various steps to prevent manual scavenging in India. Government has also enacted an act for this issue. The major problem which is associated with the sewage workers is that they are exposed to toxic gases and they die when they are over exposed to these gases. According to the Ministry of Social Justice and Empowerment, a survey has been conducted on the number of deaths due to manual scavenging. The Ministry has pointed that Tamilnadu has more number of deaths in our country due to many manual scavenging and Uttar Pradesh has more persons who are involved in manual scavenging[5]. Government takes various steps for the upliftment of these manual scavenging by providing cash subsidy and help in developing life saving skills for employment in any other field. This issue can be solved only through complete mechanizing of the cleaning process and also to take care of workers by providing them with safety equipment's. The various toxic gases which the sewage workers are exposed inside the manhole are hydrogen sulphide, carbon monoxide and methane. These gases mostly deplete the oxygen which is present inside the manhole and hence there will be less availability of oxygen which affects the worker.

The regular practice is used to open the manhole half an hour before starting the work so that there will no suffocation for oxygen inside the manhole. Most of these workers develop sub-acute symptoms like sore throat, breathlessness, sweating, irritability and cough. The major health concern is the musculoskeletal disorder like the osteoarthritis. When large amount of Hydrogen sulphide is inhaled by the person, it can cause anoxia which results in death by asphyxia. Hydrogen sulphide causes problems in the respiratory tract [7]. Exposure in the range of 10-500 ppm can cause slight poisoning. If they exceed 700 ppm, it can cause coma. The National Institute for Occupational Safety and Health (NIOSH) has suggested the safety range for methane will be 1000 ppm for 8 hours.

## II. RELATED WORKS

Sudhanshu Kumar et al [1], Proper maintenance of the drainage system increases with the growth of cities. The real time health monitoring system helps the Municipal sewage workers in very critical situations. It monitors the pulse of the involved person through pulse oximetry sensor and also checks the levels of various toxic gases which will be very harmful for man like methane. Arduino UNO is the microcontroller used in this system. The sensor assembly communicates with the display unit via the UART communication. There are various led used for various purposes like red led symbolizes when any of the parameters are not in the safe range and green led symbolizes that all the parameters are within the safety range and the yellow light symbolizes urgent attention needed.

Vijayalashmi.R et al [2], Simulation gives an imitation of the operation of the process which represents the operation over time and it is the best approach before designing a product or prototype so that any modifications or changes can be made as per the requirement and the detection system is also a simulated tool. IOT based detection system has created a new path for creating a system for sewage workers based upon Internet of Things. The system detects the various toxic gases like methane, carbon monoxide and hydrogen sulphide which are harmful to the human beings through various sensors inside the manhole. The ultrasonic sensor is used to detect any blockages in the manhole and the pulse sensor is used to detect the pulse rate of the individual inside manhole. Arm microcontroller has been used in this system for better results. The data is sent to serial communication network through the help of GSM module. The sensors provide the data to the microcontroller and the controller processes it and sends output. If the digital output is below the threshold limit then there is no indication.

Gaurang Sonawane et al [3], this system has been executed in real time through the help of Wireless Sensor Network technology (WSN) which is under a part of Internet of Things (IoT). The main objective of the system is used to identify the blockage so as to prevent clogging of water and to check the level of various gases and also the water level at any period of time through water level sensor inside the tunnel or any manhole. This system provides the data of water level, gas level and any blockages inside the manhole in the server so that the location of the place is identified through the id of the place.

B.sritha et al [4], Drainage blocking are the causes for water pollution, municipal bodies who managing this pay high prices to tackle this issue. A solution for the problem has been described in this paper which uses cost effective WSN to detect the clogging. Maintenance of the system and monitoring drainage plays a crucial role as to prevent the failure of the whole process and causes water pollution and which could lead to spending of several millions of money. The proposed method in this paper helps to monitor the sewer level in the society by using WSN with arduino technology. This system consists of mesh network which plays an important role to configure clogging inside the sewer. The ESP8266 module is a self contained SOC with integrated TCP/IP protocol stack that can give any microcontroller access to any wifi network.

## III. METHODOLOGY

Sewage workers smart monitoring system consists of two main units namely the sewage monitoring unit and the health monitoring unit. The sewage monitoring system is used to monitor the level of various toxic gases like hydrogen sulphide, ammonia and carbon monoxide and also to check clogging.

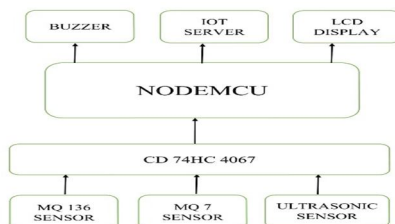


Fig 1-Sewage Monitoring Unit

This unit (Fig 1) comprises of all sensors which are used for gas level measurement and also sensor to detect any blockage inside the sewer. MQ-7 sensor is used to detect the concentration of carbon monoxide; MQ-136 is used to monitor hydrogen sulphide concentration and the ultrasonic sensor is used for the detection of any blockages. These sensors are then connected to the main controller ESP8266 along with LCD display for displaying their gas level. This unit also has a buzzer which is used to alarm the user when there is any deviation from the threshold limit. The data which are collected are pushed to the cloud through the IoT server.

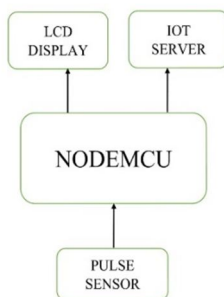


Fig 2-Health Monitoring Unit

This unit (Fig 2) consist of pulse sensor which monitors the pulse rate of the involved sewage worker along with a LCD display for displaying the values which are then connected to the controller and data collected from the controller are then pushed to cloud using the IOT server.

#### IV. FLOW CHART

The flow chart gives an idea about the working conditions of the sewage monitoring unit of the system. The controller collects the data from various sensors used in the unit and compares with the conditions declared by the user and alerts them when they exceed beyond the threshold limit. The checking conditions are the concentrations of hydrogen sulphide and carbon monoxide should be less than 100 ppm. The height should be greater than or equals to 0.3 m in case of ultrasonic sensor.

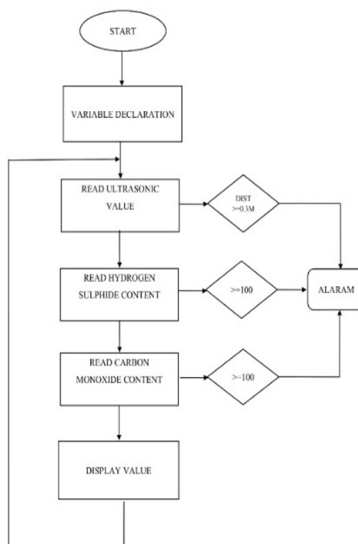


Fig 3 Flow chart Of Sewage Monitoring System

The flow chart depicts the workings conditions of the health monitoring unit of the system. The controller ESP 8266 collects data from the pulse sensor and check for the conditions declared by the user. The checking conditions are whether the pulse rate is within the limit of 110 beats per minute and alerts if it exceeds beyond this limit.

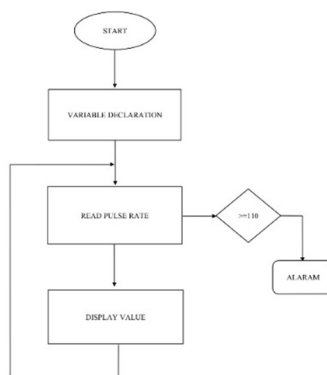


Fig 4-Flow chart Of Health Monitoring Unit

### V. WORKING

Sewage monitoring unit of the system is designed for two main purposes, one to detect any blockage inside the sewer and the other function is to monitor the level of toxic gases inside the manhole. The various sensors which are used in this unit are MQ-7 sensor, MQ-136 sensor and ultrasonic sensor. MQ – 7 gas sensor is used to detect the concentration of carbon monoxide at any places. This sensor uses a gas sensing material like SnO<sub>2</sub> which has a lower conductivity in the clean air. The working principle of this sensor is that when there is any presence of carbon monoxide in the air of certain density then the conductivity of the sensor increases. So there will be increase in the conductivity of the sensor with respect to the increase in the concentration of carbon monoxide. The sensor has good long term stability and has a life of 5 years with a pre heat time of 48 hours. The output is obtained across the load resistor in the form of voltage.

MQ – 136 sensor is used for the detection of hydrogen sulphide and works on the principle similar to that of the MQ -7 gas sensor where the conductivity of the sensor increases with respect to the increase in the concentration of hydrogen sulphide. It is more stable and becomes invalid when they are exposed to silicon beam and should not be allowed for the exposure of high corrosive gases.

Ultrasonic sensor is deployed for the purpose of detecting any blockages inside the sewer. This works on the same principle as of a radar system and the distance is calculated using the acoustic waves. The controller used in this system is ESP 8266. It has a memory of 128 Kbytes and a storage space of 4 Mbytes which is open source IOT platform. The board accompanies a LDO voltage controller to keep the voltage enduring at 3.3V, as the working voltage scope of ESP8266 is 3V to 3.6V. It can dependably supply up to 600mA, which ought to be all that anyone could need when ESP8266 pulls as much as 80mA during RF transmissions. The advantage of this controller is that it consumes very low power. It gives good integrated support for the Wi-Fi network and the size of the board is very small and they are low cost.

The nodemcu contains only one analog pin A0. Therefore an analog multiplexer is used to connect multiple analog sensors. The components are connected as per the block diagram of sewage monitoring unit (Fig 1). The MQ7 sensor is connected to nodemcu via an analog multiplexer (CD 74 HC 4067). If the CO level in air exceeds or equals to 100 PPM an alert is sent to the Thingspeak server and the manual scavenger. When the H<sub>2</sub>S concentration in air exceeds or equals to 100 ppm, an alert message is sent to the manual scavenger and the thingspeak server through an active wireless network. The ultrasonic sensor sends sound waves to calculate the distance of the object. This can be calculated by the formula distance = duration\*0.034/2, here the duration refers to the time taken for the sound waves to hit and reflect back to the receiver. If the distance exceeds or equals 30cm a warning is sent to the Thingspeak server regarding the blockage in the sewer.

We can create channels for every sensor data. These channels can be set as private channels or we can share the data publically via Public channels. First we have to create an account in thingspeak and also create a new channel with unique channel id. After the creation channel, a unique API key has been generated. Add that API key in the embedded code for accessing the channel which shows the sensor data in Thingspeak. After the creation of separate channel in thingspeak, the channel number and API keys are added in the embedded code. The Wi-Fi id and password also be added to the code in order to establish a connection between the processor and the Thingspeak. After that, based on the sensor's data, the output will be displayed in the thingspeak channel (private view). The continuously uploading data are real time data.

The components are connected as per the block diagram of the health monitoring unit of the system (Fig 2). The pulse sensor is attached to the index finger of the person who enters the man hole. This pulse sensor is very cost effective when compared to other sensors which are used for heart rate measurement. The pulse sensor uses a principle called photoplethysmography to measure the pulse rate of the manual scavenger.

These raw data are sent to the nodemcu using the analog pin A0. These data are sent to Thingspeak server using an active network connection. For using Thingspeak first we have to create an account in thingspeak and also create a new channel with unique channel id. After the creation channel, a unique API key has been generated. Add that API key in the embedded code for accessing the channel which shows the sensor data in Thingspeak.

There these data are monitored and collected. The pulse rate can also be viewed by the manual scavenger using an LCD display that is connected to the nodemcu. If the pulse rate exceeds 110 beats per minute a warning is sent to the manual scavenger and a warning message is sent to the Thingspeak server connected to the nodemcu.

## VI. CONCLUSION

Sewage workers smart monitoring system has been designed and implemented for the continuous monitoring of the workers involved in the cleaning of the sewage from the increased exposure of toxic gases. This system takes care of all the parameters which are to be monitored while working inside the manhole and act as a safety and protective agent for the worker. This system will be very helpful during rainy days and prevents clogging as early as possible. They monitor every parameters real time and alert both the user and the corporation office. Thus the system helps to prevent sudden accidents of the employed workers. This system can be used by the Local civil bodies like Municipal Corporation for their daily cleaning process. The system can be developed with an android application which will be directly linked to the cloud which notifies the user regarding any deviation from the threshold limit through the smart phone itself in the future.

## VII. ACKNOWLEDGEMENT

We would like to express our deepest gratitude and appreciation to our guide Dr, M. Shanthy For her excellent guidance, caring, patience, suggestions and encouragement with much appreciation to all those who gave us to complete this project

## REFERENCES

- [1] Vijayalakshmi, R., Dr.Sengeni, D., 2017, November. IoT Based Smart Detection System for Harmful Gases in Underground Sewages. International Journal for Research in Applied Science & Engineering Technology, 5(11).
- [2] Kumar, S., Kumar, S., Tiwari, P.M. and Viral, R., 2019, March. Smart Safety Monitoring System for Sewage Workers with Two Way Communication. In 2019 6th International Conference on Signal Processing and Integrated Networks (SPIN) (pp. 617-622). IEEE.
- [3] SONAWANE, G., MAHAJAN, C., NIKALE, A. and DALVI, Y., 2018. Smart Real-Time Drainage Monitoring System Using Internet of Things.
- [4] Sritha, B., Navaneethan, P., Ranjitha, R., Sowmiya, P., Thirugnanam, T., Sakthi Kumar., 2019, March. Sewage Sensor Monitoring System Based On Embedded System. International Journal of Advanced Research in Electrical, Electronics and Instrumentation Engineering, 8(3).
- [5] <https://pib.gov.in/newsite/PrintRelease.aspx?relid=184118>
- [6] <https://www.ncbi.nlm.nih.gov/pmc/articles/PMC2796749/>
- [7] <https://www.conserve-energy-future.com/causes-effects-solutions-manual-scavenging.php>



10.22214/IJRASET



45.98



IMPACT FACTOR:  
7.129



IMPACT FACTOR:  
7.429



# INTERNATIONAL JOURNAL FOR RESEARCH

IN APPLIED SCIENCE & ENGINEERING TECHNOLOGY

Call : 08813907089  (24\*7 Support on Whatsapp)