



IJRASET

International Journal For Research in
Applied Science and Engineering Technology



INTERNATIONAL JOURNAL FOR RESEARCH

IN APPLIED SCIENCE & ENGINEERING TECHNOLOGY

Volume: 8 Issue: X Month of publication: October 2020

DOI: <https://doi.org/10.22214/ijraset.2020.31955>

www.ijraset.com

Call:  08813907089

E-mail ID: ijraset@gmail.com

Analysis of Condenser with Composite Material using CFD

M. Sugumar¹, M. Arun Kumar², S. Bharanidharan², T. Dinesh Kumar², G. Hariprasath²

¹Assistant Professor, ^{2,3,4,5}UG Scholar, Department of Mechanical Engineering, Erode, Tamilnadu, India

Abstract: The main objective of the present work is to increase the performance of the condenser by increasing the heat transfer rate through the condenser and to analyze the cooling rate of the condenser. Heat transfer rate can be increased by the extended surfaces such as fins, design, materials and cooling fluid. For this method we considered to change the material of the condenser, mainly composites. In general, copper is the mainly using material in condensers and heat exchangers. Composites we choosed are Copper-Aluminum combine composite, copper polymer composite, Aluminum alloy, zinc alloy. Major advantage we analyzed are using of composites increases cooling rate and increased life time. We design the condenser in CAD and analyze the working capabilities in CFD.

Keywords: CFD, Condenser, Heat transfer, pressure, efficiency, composites.

I. INTRODUCTION

A condenser is a system used to convert vapor to liquid. They have been using in enormous industries in mostly all industrial areas for cooling the water vapor from the system and to cool it. The fluids may be separated by a solid wall to prevent mixing or they may be in direct contact. They are widely used in space heating, refrigeration, air conditioning, power stations, chemical plants, petrochemical plants, natural-gas processing. Larger condensers are used in industrial-scale distillation processes to cool distilled vapor into liquid distillate. A composite material is made from two or more constituent materials with significantly different physical or chemical properties when combined, produce a material with characteristics different from the individual components. The new material may be preferred for many reasons include materials which are stronger, lighter, or less expensive when compared to traditional materials. Composites used in condenser to study the heat flow of composite materials and to increase cooling rate of condenser, which can be analyzed in Computerized fluid analysis (CFD) to analyze and study the fluid flow.

II. MATERIAL SELECTION

A. Copper-Nickel Composite

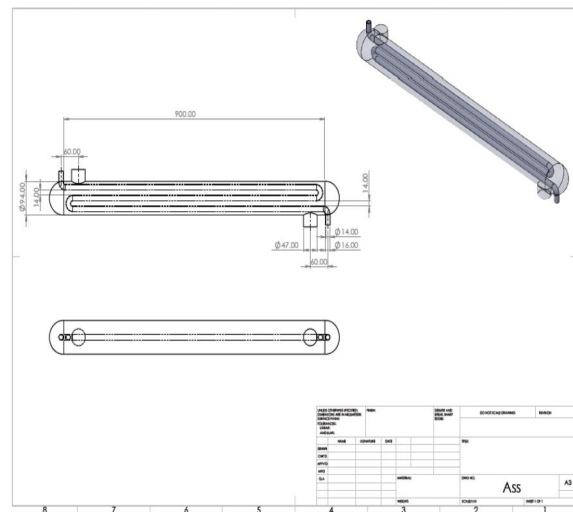
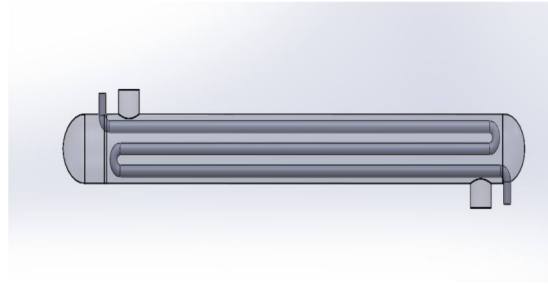
Cupronickel or copper-nickel (Cu-Ni) is an alloy of copper that contains nickel and strengthening elements, such as iron and manganese. The copper content typically varies from 60to90 percent.

Despite its high copper content, cupronickel is silver in colour. Cupronickel is highly resistant to corrosion by saltwater ,and there fore used for piping, heat exchangers and condensers in sea water systems & for marine hardware . It is sometimes used for the propellers, propeller shafts, and hull so high-quality boats. Other uses include military equipment and chemical, petro chemical, and electrical industries.

Common mode must of cupronickel silver-coloured coins. Properties of cupronickel include corrosion resistant, good tensile strength, ductility when annealed, expansion characteristics for heat exchangers and condensers, good thermal conductivity and ductility at cryogenic temperatures and beneficial anti micro bialtouchsurfaceprope

Materials	Density (kg/m ³)	Specific heat (J/kgk)	Thermal conductivity (W/mk)
Copper	8978	381	387.6
Cu-Ni	9675	450	457.6

III. DESIGN



The complete model of the solar still is done in SolidWorks 2019. For the geometry to be imported to the FLUENT software, it has to be done as per the requirement of the software. The difference for fluent modelling is that the part which has the fluid flow has to be modelled as solid.

This modelling is different from the modelling used for analysis.

- 1) The modelling is done as per the requirement of FLUENT software. The model is made as complete solid. Mesh is generated with a size of 3 mm for all the bodies.
- 2) Each face is given names as follows for the meshing process in the software as SteamInlet, SteamOutlet, WaterInlet, WaterOutlet.
- 3) After the mesh window is closed, the geometry along with the mesh is brought into the FLUENT software as a file with the extension developed by the ANSYS mesh.
- 4) Set up pressure, velocity, time and the models give energy equation.
- 5) In software, insert cell zone conditions and boundary conditions for simulation.

IV. DIMENSIONS

- A. Length of the condenser = 900mm
- B. Diameter of the condenser = 94mm
- C. Steam pipe inner diameter = 14mm
- D. Steam pipe outer diameter = 16mm
- E. Water inlet pipe diameter = 47mm

V. TEMPERATURE CALCULATION

1) Material –Copper,

steam temperature 320°C

Inlet temperature of the steam, T1= 320°C

Outlet temperature of the steam, T2=26°C

Inlet temperature of water, t1=30°C

Outlet temperature of water, t2=42°C

steam temperature 440°C

Inlet temperature of the steam, T1= 440°C

Outlet temperature of the steam, T2=26.5°C

Inlet temperature of water, t1=30°C

Outlet temperature of water, t2=58°C

2) Material –Copper Nickel,

steam temperature 320°C

Inlet temperature of the steam, T1= 320°C

Outlet temperature of the steam, T2=26°C

Inlet temperature of water, t1=30°C

Outlet temperature of water, t2=40°C

steam temperature 440°C

Inlet temperature of the steam, T1= 440°C

Outlet temperature of the steam, T2=26.5°C

Inlet temperature of water, t1=30°C

Outlet temperature of water, t2=55°C

Flow Rate = 25 M/S

Overall Heat Transfer Co-efficient, U = 2300 W/m²K

Specific Heat of Copper = 381 J/ kgk

Specific Heat of Cu-ni = 450 J/ kgk

3) Cu -Ni at steam inlet temperature 320°C,

a) Heat load , Q = m.Cp. (T1 –T2) Q = 25 * 450 (320 -26.5)Q = 33.01 x 105J

b) log mean temperature difference , $\Delta T_m = \frac{(T1-t2)-(T2-t1)}{\ln T1-t2(T2-t1)} \Delta T_m = \frac{(320-40)-(26.5-30)}{\ln(320-40)/(26.5-30)} \Delta T_m = 66.09^\circ\text{C}$

c) Heat transfer Area, A = Q / (U x ΔT_m) A = 33.01 x 105/ (2300 x 66.09)A = 21.7164. Heat transfer coefficient, q= cpdT.m/tq = 450*293.5*25457.6q = 7.215 KW/ m²k

4) Copper at Steam Inlet Temperature 320°C,

a) Heat load , Q = m.Cp. (T1 –T2) Q = 25 * 381 (320 -26)Q = 28.003 x 105J

b) log mean temperature difference , $\Delta T_m = \frac{(T1-t2)-(T2-t1)}{\ln T1-t2(T2-t1)} \Delta T_m = \frac{(320-42)-(26-30)}{\ln(320-42)/(26-30)} \Delta T_m = 68.38^\circ\text{C}$

c) Heat transfer Area, A = Q / (U x ΔT_m) A = 28.003 x 105/ (2300 x 68.38)A = 17.80

d) Heat transfer coefficient, q= cpdT.m/tq = 381*294*25387.6q = 7.224 KW/ m²k

5) Cu -Ni at steam inlet temperature 440°C,

6) `Cu -Ni at steam inlet temperature 320°C,

a) Heat load , Q = m.Cp. (T1 –T2) Q = 25 * 450 (320 -26.5)Q = 33.01 x 105J

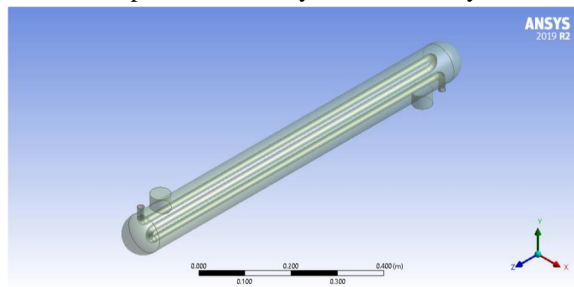
b) Log mean temperature difference , $\Delta T_m = \frac{(T1-t2)-(T2-t1)}{\ln T1-t2(T2-t1)} \Delta T_m = \frac{(320-40)-(26.5-30)}{\ln(320-40)/(26.5-30)} \Delta T_m = 66.09^\circ\text{C}$

c) Heat transfer Area, A = Q / (U x ΔT_m) A = 33.01 x 105/ (2300 x 66.09)A = 21.716

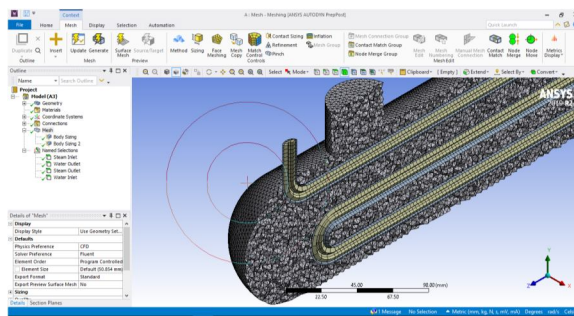
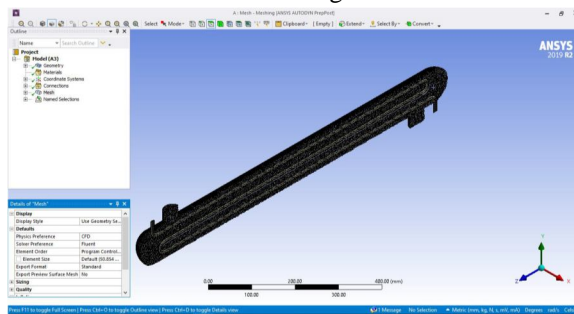
d) Heat transfer coefficient, q= cpdT.m/tq = 450*293.5*25457.6q = 7.215 KW/ m²k

VI. ANALYSIS

Imported Geometry Model In Ansys

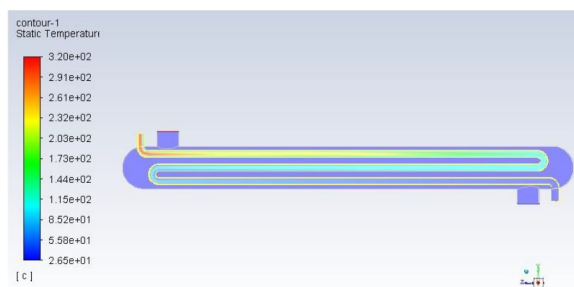


Meshing

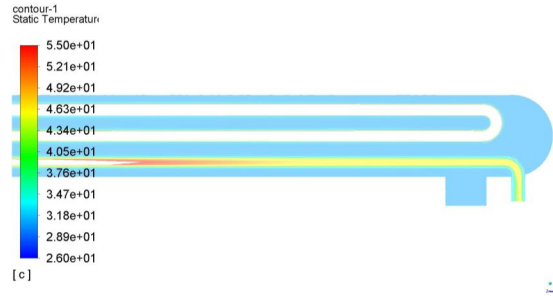


ANALYSIS OF CONDENSER AT DIFFERENT TEMPERATURES

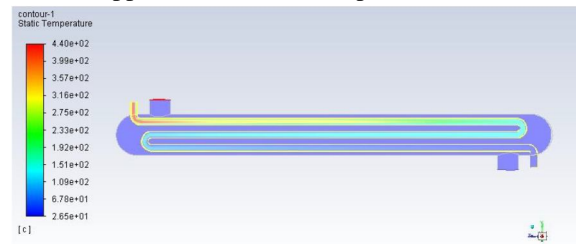
Copper at steam inlet temperature 320°C



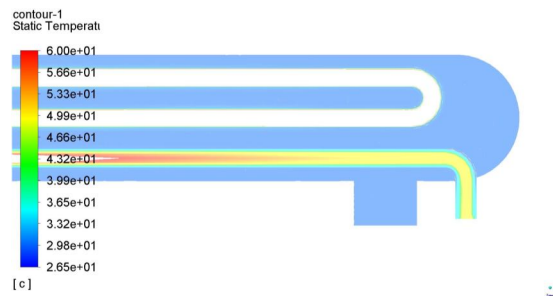
Steam outlet area pointed in the condenser for details at 320°C(Copper)



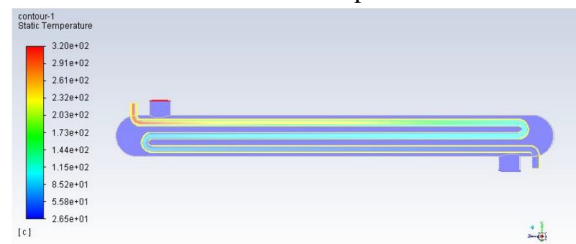
Copper at steam inlet temperature 440°C



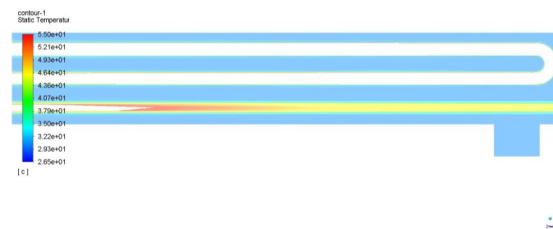
Steam outlet area pointed in the condenser to small deviations at 440°C(Copper)



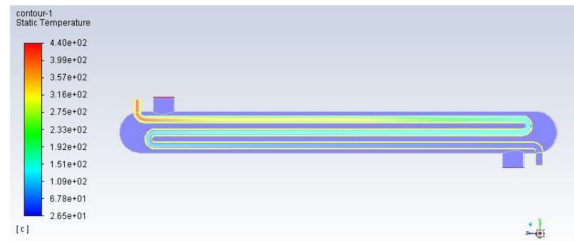
Cu -Ni at steam inlet temperature 320°C



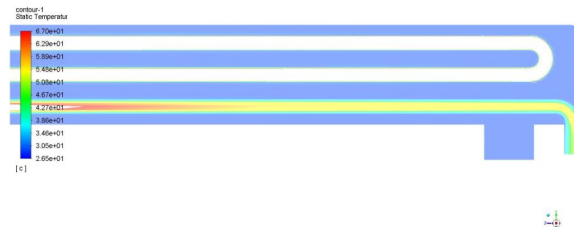
Steam outlet area pointed in the condenser for details at 320°C(Cu -Ni)



Cu -Ni at steam inlet temperature 440°C



Steam outlet area pointed in the condenser for details at 440°C(Cu –Ni)



VII. RESULT & DISCUSSION

The results shows that the analysed composite and copper material converts the steam to liquid water state at cool water temperature. Thus resulted in the composite Cu-Ni can work similarly as the native condense rmaterial.

VIII. CONCLUSION

In this paper, we have concluded that the using of copper composites, mainly copper-polymer / copper-aluminum composites .These composites have thermal distribution capabilities and increase in cooling rate as evaluated. These composites in the roll- to- roll matrix form, the heat is distributed in a cross flow type . Using certain thermal condenser analyzing equations and CAD models to design the condenser and analyzing using CFD dynamics software for working fluid analyzing.

IX. FUTURE SCOPE

By studying the material properties of composite materials and develop them to use in there altime applications, as a future of efficient and the long life materials composites is a best way in one of them Cu-Ni alloy can use in the salt water and marine condenser and waterpipe lines, thus gives longer life time .Usage of computer models and simulations we can reduces developing and testing costs.

X. ACKNOWLEDGEMENTS

The authors are grateful to the Nandha Engineering College for providing necessary facilities to develop this 3 - Dimensional Model. The authors are also thankful to the department lab for modeling our design.

A. Conflict of Interest

There is no conflict of interest to be described.

REFERENCES

- [1] Lalatendu Pattanayaka ,Biranchi Narayana Padhib ,Bibhakar Kodamasingh, Thermal performance assessment of steam surface condenser, Case Studies in Thermal Engineering, (2019) Volume 14.
- [2] Piotr A. Domanski,David Yashar, Optimization of finned-tube condensers using an intelligent system, International Journal of Refrigeration, (2007) Volume 30.
- [3] Vyacheslav Arsenyev , Sergej Vanyeyev, Mykhail Protsenko, Alexander Gulyi, Heat Pump Unit Based on Principle of Stream Thermocompression Using Water-Ammonia Solution, Procedia Engineering (2012) volume 39.
- [4] Nur Rohmah, Ghalya Pikra, Andri Joko Purwanto, Rakhmad Indra Pramana, The effect of plate spacing in plate heat exchanger design as a condenser in organic Rankine cycle for low temperature heat source , Energy Procedia , (2015) volume 68.
- [5] Antonio C. Caputo , Pacifico M. Pelagagge, Paolo Salini, Heat exchanger design based on economic optimization, Applied Thermal Engineering, (2008) volume 28.

- [6] Qing-Hui Wang , Hao Zhao , Zhi-Jia Xu , Jing-Rong Li , Da-Xiang Deng, Numerical analysis on the thermal hydraulic performance of a composite porous vapor chamber with uniform radial grooves, *International Journal of Heat and Mass Transfer*, (2019) volume 142.
- [7] Kuo-Hsiang Chien , Yur-Tsai Lin , Yi-Rong Chen , Kai-Shing Yang , Chi-Chuan Wang, A novel design of pulsating heat pipe with fewer turns applicable to all orientation, *International Journal of Heat and Mass Transfer*, (2012) volume 55
- [8] Keith Coulson , Sanjiv Sinha , Nenad Miljkovic, Analysis of modular composite heat pipes, *International Journal of Heat and Mass Transfer*, (2018) volume 127.
- [9] Siddabathula Madhusudan , Mohammed Moulana Mohiuddin Sarcar , Narsipalli Bhargava Rama Mohan Rao, Mechanical properties of Aluminum-Copper(p) composite metallic materials, *Journal of Applied Research and Technology*, (2016) volume 14
- [10] B. Orr , A. Akbarzadeh , M. Mochizuki , R. Singh, A review of car waste heat recovery systems utilising thermoelectric generators and heat pipes, *Applied Thermal Engineering*, (2016) volume 101.
- [11] Manjunath C. Rajagopal , Ho Chan Chang , Timothy Man, Gowtham Kuntumalla , Yuquan Meng, Sreenath Sundar, Hanyang Zhao , Srinivasa Salapaka , Chenhui Shao, Placid Ferreira, Nenad Miljkovic, Sanjiv Sinha, Materials-to-device design of hybrid metal-polymer heat exchanger tubes for low temperature waste heat recovery, *International Journal of Heat and Mass Transfer*, (2019) volume 143.
- [12] Ahmadali Gholamia, Hussein A. Mohammed , Mazlan A. Wahid , Mehdi Khiadani, Parametric design exploration of fin-and-oval tube compact heat exchangers performance with a new type of corrugated fin patterns, *International Journal of Thermal Sciences*, (2019) volume 144.
- [13] Xue Chen , Chuang Sun , Xinlin Xia , Rongqiang Liu , Fuqiang Wang, Conjugated heat transfer analysis of a foam filled double-pipe heat exchanger for high-temperature application, *International Journal of Heat and Mass Transfer*, (2019) volume 144.
- [14] Hui Deng , Jizhen Liu , Wei Zheng, Analysis and comparison on condensation performance of core tubes in air-cooling condenser, *International Journal of Heat and Mass Transfer*, (2019) volume 135.
- [15] P.C. Mukesh Kumar a,* , M. Chandrasekar b, CFD analysis on heat and flow characteristics of double helically coiled tube heat exchanger handling MWCNT/water nanofluids, *Heliyon*, (2019) volume 5.
- [16] Iftikhar Ahmad , Hina Zahid , Fayyaz Ahmad , Muhammad Asif Zahoor Raja, Dumitru Baleanu, Design of computational intelligent procedure for thermal analysis of porous fin model, *Chinese Journal of Physics*, (2019) volume 59.
- [17] William A. Davies III , Yu Kang , Pega Hrnjak , Anthony M. Jacobia, Heat transfer and flow regimes in large flattened-tube steam condensers, *Chinese Journal of Physics*, (2019) volume 148.
- [18] Mansoor Feilizadeh , M.R. Karimi Estahbanati, Mohammad Khorram , Mohammad Reza Rahimpour, Experimental investigation of an active thermosyphon solar still with enhanced condenser, *Renewable Energy*, (2019) volume 143.
- [19] Nan Hua , Huan Xi , Rong Ji Xu , Ying Chen , Hua Sheng Wang, Numerical simulation of multi-pass parallel flow condensers with liquid-vapor separation, *International Journal of Heat and Mass Transfer*, (2019) volume 142.
- [20] Ruonan Jin, Xiaoru Yang, Lijun Yang , Xiaoze Du, Yongping Yang, Thermo-flow performances of air-cooled condenser cell with oblique finned tube bundles, *International Journal of Thermal Sciences*, (2019) volume 135.
- [21] Yanqiang Kong, Weijia Wang, Xianwei Huang, Lijun Yang* , Xiaoze Du, Yongping Yang, Wind leading to improve cooling performance of natural draft air-cooled condenser, *Applied Thermal Engineering*, (2018) volume 136.
- [22] F.W. Yu, K.T. Chan, Combined air-cooled condenser layout with in line configured finned tube bundles to improve cooling performance, *Applied Thermal Engineering*, (2019) volume 154
- [23] Vedran Medica-Viola , Branimir Pavkovic , Vedran Mrzljak, Numerical model for on-condition monitoring of condenser in coal-fired power plants, *International Journal of Heat and Mass Transfer*, (2018) volume 117.
- [24] Daniele Torresin , Francesco Agostini, Adrian Mularczyk, Bruno Agostini, Mathieu Habert, Double condenser pulsating heat pipe cooler, *Applied Thermal Engineering*, (2017) volume 1.
- [25] Chuan-Yong Zhua , Zeng-Yao Lia , Ning Pan, Design and thermal insulation performance analysis of endothermic opacifiers doped silica aerogels, *International Journal of Thermal Sciences*, (2019) volume 145.



10.22214/IJRASET



45.98



IMPACT FACTOR:
7.129



IMPACT FACTOR:
7.429



INTERNATIONAL JOURNAL FOR RESEARCH

IN APPLIED SCIENCE & ENGINEERING TECHNOLOGY

Call : 08813907089  (24*7 Support on Whatsapp)