



IJRASET

International Journal For Research in
Applied Science and Engineering Technology



INTERNATIONAL JOURNAL FOR RESEARCH

IN APPLIED SCIENCE & ENGINEERING TECHNOLOGY

Volume: 8 Issue: XI Month of publication: November 2020

DOI: <https://doi.org/10.22214/ijraset.2020.32182>

www.ijraset.com

Call:  08813907089

E-mail ID: ijraset@gmail.com

Analysis of Ambient Air Quality of Jalna City (MS) using AQI, India

B. S. Dobhal¹, R. P. Shimpi², Mazahar Farooqui³

^{1,2}State Ambient Air Quality Monitoring Programme (SAMP), Badrinarayan Barwale College, Jalna-431203, (MS) India.

³Department of Chemistry, Dr. Rafiq Zakaria College for Women, Navkhanda, Aurangabad-431001, (MS), India

Abstract: The ambient air quality of Jalna city has been evaluated by means of air quality index (AQI). For one year period ambient air concentrations of air pollutants viz. SO₂, NO_x, RSPM and NRSPM were monitored at residential and industrial sites to determine AQI. The monthly, seasonal and annual AQI values determined at both residential and industrial sites pointed out the overall air quality during the study period was comparable with slight variation. The air quality at residential site was a little inferior than industrial site. Factors like strict government rules, efficient exhaust gas treatments, proper disposal of waste also facilitated in dropping air pollution levels. Annual mean concentrations of SO₂ and NO_x evaluated at residential as well as industrial site were observed within the permissible limits of Indian National Ambient Air Quality standards (NAAQS). While annual mean concentrations RSPM and NRSPM at both sites violated norms. The annual AQI values 257 for residential and 224 for industrial were observed due to higher RSPM indicates poor category of air quality.

Keywords: Ambient air quality (AQI), Gaseous pollutants-SO₂, NO_x, Particulate pollutants, RSPM-Respirable Suspended Particulate Matter, NRSPM- Non Respirable Suspended Particulate Matter

I. INTRODUCTION

Air is one of the most essential constituent of our environment. Humans require on an average 12 kg air everyday which is 12 to 15 times more food consumed daily. Any change in composition of air adversely affects living system including human life causing air pollution. Environmental pollution is increasing at scary rate gradually and environment monitoring agencies indicated the harmful effects of over pollution. Various activities responsible for the destruction of nature are over population, urbanization¹, automobiles², scarce public facilities³, emission and industrialization⁴⁻⁶. All such factors are tremendously declining human health, resources and climatic⁷⁻¹⁰. From different air pollutants sulphur dioxide, nitrogen oxides and particulate matter are primary pollutants found by environment protection agency. Quantity of air pollutants in particular area depends on factors like sources of pollution-local and distant, conditions of the area-meteorological and topographical, spatial and temporal variations¹¹⁻¹⁴. Correct knowledge of air pollutants, their concentrations, variations and field data are necessary for proper management of these issues^{15,16} otherwise it would hinder environment planning activities. Most countries including India started ambient air quality programs to know air quality by preparing statistics on air pollutant concentrations in ambient air¹⁷. To manage this crisis EPA started Air Quality Index (AQI) which mathematically links concentration of various pollutants and provide a single quantity indicating the air quality of particular place based on air quality index rating scale¹⁸⁻²¹. In Bikaner particulate matter concentration found high in winter and low in monsoon²². In Vapi city which is moderately polluted city PM₁₀ was found to be vital pollutant²³. Compiled data for 2013-2014 for 72 AAQM stations collected by MPCB showed moderate to below air quality²⁴. In extension of our previous work²⁵⁻²⁷ the present paper explores monthly, annual and seasonal variations in ambient air quality on selected monitoring sites residential (IMA hall) and industrial (Krishidhan seeds) of Jalna city for the year 2018 using air quality index (AQI).

II. MATERIALS AND METHODS

Study area: Jalna district is roughly situated in the central part of Maharashtra state and in northern part of Marathwada region in India. Jalna district lies between 19°11' to 23°31' north latitudes and 75°41' to 76°41' east longitudes. It has an area of 7612 km² which is about 2.47% of total area of Maharashtra in India. The district has subtropical climate with bulk rainfall from the southwest monsoon from June to September. The average rainfall of the district is about 650 to 750 mm. The district during drought has rainfall as low as 400 to 450 mm. After rainy season winter extends up to February during which the minimum temperature drops to 9° to 10°C and maximum temperature reaches upto 30-35°C. After winter hot summer extends up to June. The maximum day temperature reaches to 42-45°C in summer²⁸⁻²⁹. Jalna is industrially famous for seed and steel industries. The industrial development of Jalna is broadly based on Engineering, Plastic and Agriculture. At present six industrial areas are under Maharashtra Industrial Development Corporation (MIDC), Jalna containing pulses mills, oil mills, refineries, steel re-rolling, plastics, tiles and cement pipes, fertilizers, insecticides, pesticides and the co-operative sugar factories. These industries and growing numbers of the automobiles are the key causes of air pollution in the city^{30,31}.

A. Sampling and Analysis of Particulate Pollutant (RSPM and NRSPM)

The samples of RSPM, NRSPM, SO₂ and NO_x were collected twice a week during January to December 2018 from industrial and residential sites. For collecting samples High volume air sampler (model RDS APM 460NL with gaseous sampling attachment APM 411TE (make Enviro-tech India Pvt. Ltd.) was used by operating the equipment for 24 hours period. Particulate pollutants i.e. RSPM and NRSPM samples were collected by regulating air with flow rate between 1.1-1.2 m³/min up to 8 hours. The air inside the sampler passed in two stages through a combination of cyclone separator and filter. The cyclone separator gathers bigger particles i.e. non respirable particulate matter (NRSPM) (particle size > 10µm) in previously weighed dust collector in first stage, while remaining particulate i.e. RSPM (size < 10µm) were collected over a previously dried weighed glass microfiber filter (Whatmann GF/A, 203x254mm). Gravimetrically the concentration of RSPM and NRSPM were determined by standard method, CPCB 2011³².

B. Gaseous pollutants (SO₂ and NO_x)

The ambient air samples for SO₂ were collected by absorbing SO₂ from known volume of air in absorbent solution of potassium tetrachloromercurate (TCM). A stable dichlorosulphitomercurate complex formed was made to react with para rosaniline and methyl sulphonic acid. The coloured solutions absorbance was noted at 530 nm by spectrophotometer. Sulphate ions formed its concentration in absorbent was found by using modified West and Gaeke Method (IS 5182 part 2:2001); CPCB 2001³³.

Ambient nitrogen dioxide was collected by bubbling known volume of air through a solution of sodium hydroxide and sodium arsenite. The nitrile ion concentration produced during sampling were found calorimetrically by reacting nitrile ion with phosphoric acid, sulphanilamide and N-(1-naphthyl)-ethylenediamine dihydrochloride (NEDA) and measuring the absorbance of the highly coloured azo-dye at 540nm^{34,35}.

C. Air Quality Index (AQI)

AQI is single number which illustrates overall ambient air quality grade based on actual measured concentration of criteria pollutants and its prescribed standard permissible concentration^{36,37}.

For analyzing and representing uniform air quality status AQI is key existing tool.

Equation for Calculation of AQI is

$$AQI = \left(\frac{100}{n}\right) \sum_{k=1}^n \left(\frac{APC_k}{SPC_k}\right)$$

Where, AQI= air quality index

n = number of criteria pollutants

APC= Actual pollutant concentration

SPC= Standard pollutant concentration (CPCB 2011)

Table.1 Indian National Ambient Air quality standard

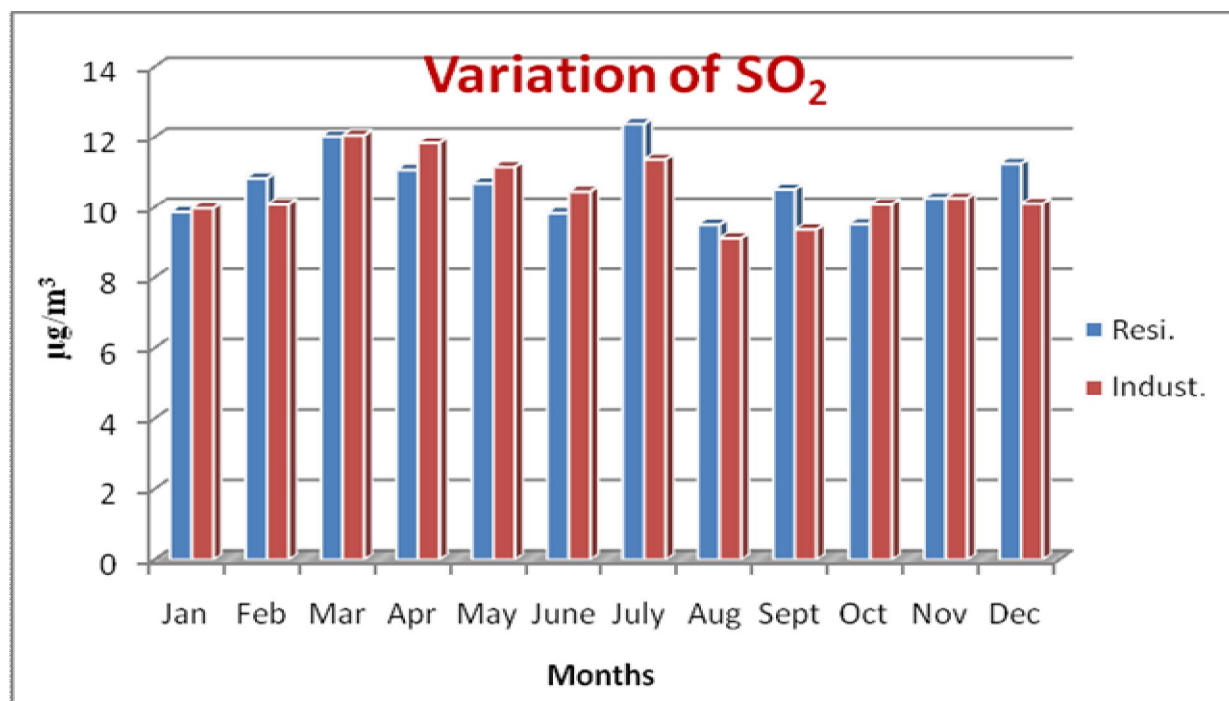
Sr.No.	Pollutant	Time weighted Average	Air Quality Standard concentration in Ambient air	
			Industrial, residential, rural and other area	Ecologically sensitive area (notified by central Govt.)
1	SO ₂ µgm/m ³	Annual 24 hours	50	20
			80	80
2	NO ₂ µgm/m ³	Annual 24 hours	40	30
			80	80
3	PM ₁₀ µgm/m ³	Annual 24 hours	60	60
			100	100
4	PM _{2.5} µgm/m ³	Annual 24 hours	40	40
			60	60

Table.2 Rating Scale of Air Quality Index (AQI) values

AQI value	AQI Category
0-50	Good
51-100	Satisfactory
101-200	Moderately polluted
201-300	Poor
301-400	Very poor
>401	Severe

Table.3 Monthly minimum, maximum and average concentration of SO₂ (µgm/m³) at residential and industrial sites

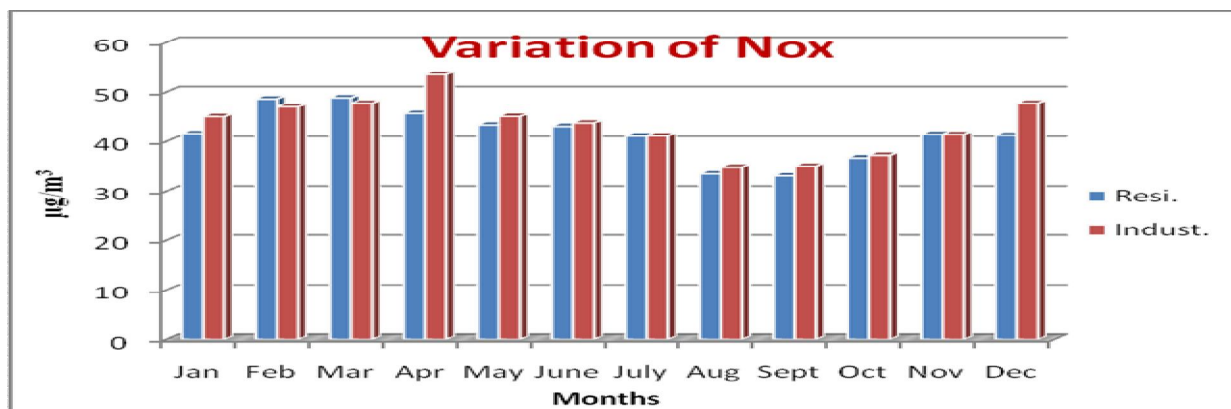
Month	Residential			Industrial		
	Min.	Max.	Avg.	Min.	Max.	Avg.
Jan	8.40	11.34	9.87	7.75	12.21	9.98
Feb	8.95	12.71	10.83	8.97	11.21	10.09
Mar	11.04	13.03	12.03	10.96	13.17	12.06
Apr	9.68	12.46	11.07	9.88	13.79	11.83
May	9.30	12.09	10.69	9.58	12.73	11.15
June	8.69	11.00	9.84	9.42	11.51	10.46
July	10.81	13.96	12.38	10.31	12.42	11.36
Aug	7.58	11.44	9.51	7.51	10.76	9.13
Sept	8.36	12.68	10.52	8.13	10.63	9.38
Oct	7.74	11.33	9.53	8.85	11.33	10.09
Nov	8.67	11.87	10.27	8.67	11.87	10.27
Dec	10.37	12.11	11.24	8.86	11.37	10.11
Average	9.13	12.16	10.64	9.07	11.91	10.49



Graph-1

Table 4. Monthly minimum, maximum and average concentration of NOx ($\mu\text{g}/\text{m}^3$) at residential and industrial sites.

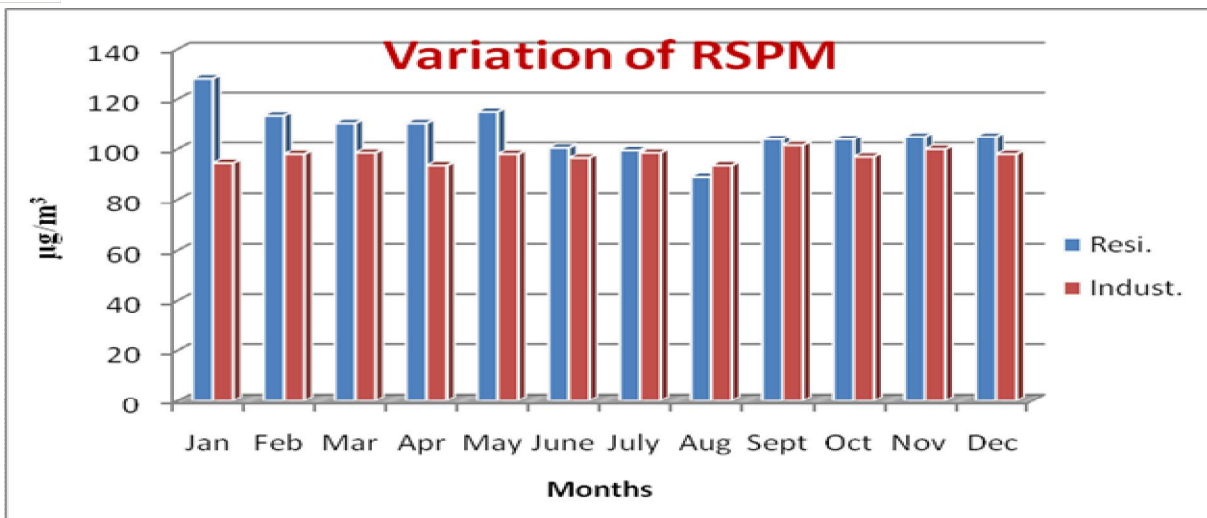
Month	Residential			Industrial		
	Min.	Max.	Avg.	Min.	Max.	Avg.
Jan	35.51	47.64	41.57	39.86	50.27	45.06
Feb	37.25	60.02	48.63	41.93	52.22	47.07
Mar	38.27	59.40	48.83	42.49	53.01	47.75
Apr	38.94	52.49	45.72	46.33	60.60	53.46
May	35.75	50.93	43.34	38.33	51.88	45.10
June	35.46	50.65	43.05	38.15	49.37	43.76
July	38.34	43.86	41.10	36.40	45.86	41.13
Aug	28.09	38.98	33.53	31.27	38.49	34.88
Sept	28.82	37.45	33.13	32.11	38.09	35.10
Oct	33.57	39.91	36.74	33.37	41.20	37.28
Nov	33.69	49.14	41.42	33.69	49.14	41.41
Dec	34.21	48.26	41.23	46.45	49.04	47.74
Average	34.82	48.22	41.52	38.82	48.33	43.57



Graph-2

Table 5. Monthly minimum, maximum and average concentration of RSPM ($\mu\text{g}/\text{m}^3$) at residential and industrial sites.

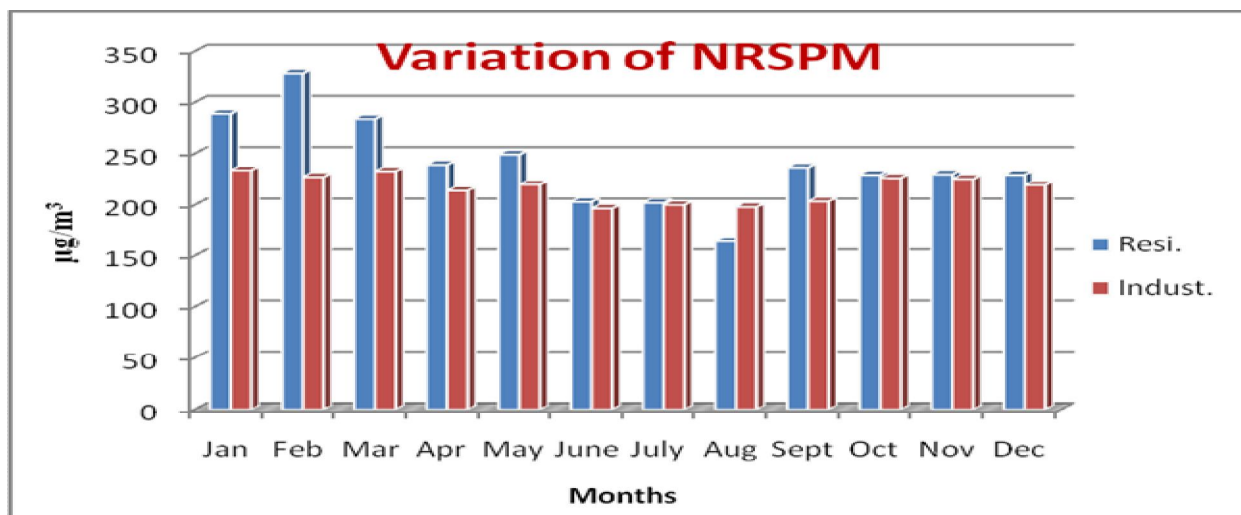
Month	Residential			Industrial		
	Min.	Max.	Avg.	Min.	Max.	Avg.
Jan	115	141	128	89	100	94.50
Feb	104	123	113.50	86	110	98
Mar	103	118	110.50	91	106	98.50
Apr	104	117	110.50	83	104	93.50
May	103	127	115	91	105	98
June	84	117	100.50	90	103	96.50
July	81	118	99.50	91	106	98.50
Aug	61	117	89	82	105	93.50
Sept	96	111	104	97	106	101.50
Oct	94	114	104	94	100	97
Nov	98	112	105	93	107	100
Dec	98	112	105	93	103	98
Average	95.08	118.91	107	90	104.58	97.29



Graph-3

Table 6. Monthly minimum, maximum and average concentration of NRSPM (µgm/m³) at residential and industrial sites.

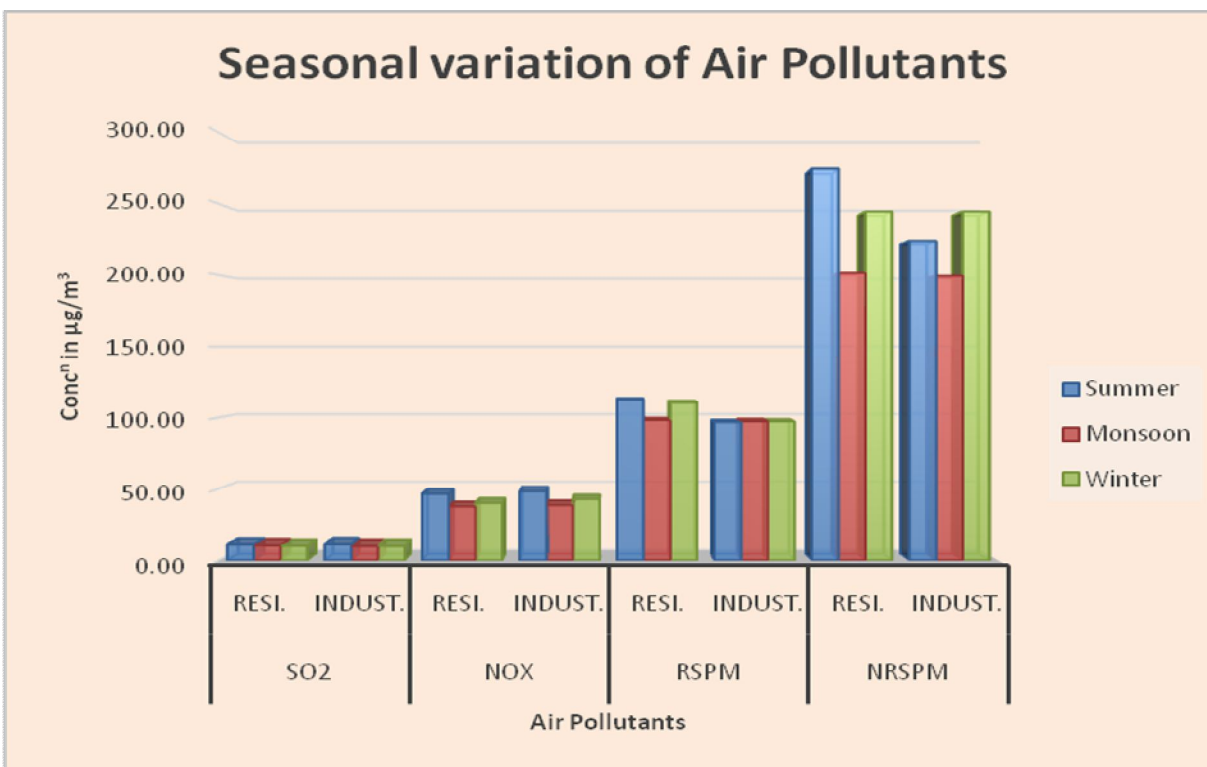
Month	Residential			Industrial		
	Min.	Max.	Avg.	Min.	Max.	Avg.
Jan	228	350	289	187	282	234
Feb	287	368	327.50	197	258	227.50
Mar	256	312	284	200	266	233
Apr	201	277	239	188	240	214
May	219	279	249	197	242	220
June	151	255	203	161	232	196.50
July	173	231	202	164	236	200
Aug	92	236	164	143	253	198
Sept	205	268	236.50	158	249	203.50
Oct	219	240	229.50	210	243	226.50
Nov	212	248	230	207	244	225.50
Dec	217	242	229.50	202	237	219.50
Average	205	275.5	240.25	184.5	248.5	216.50



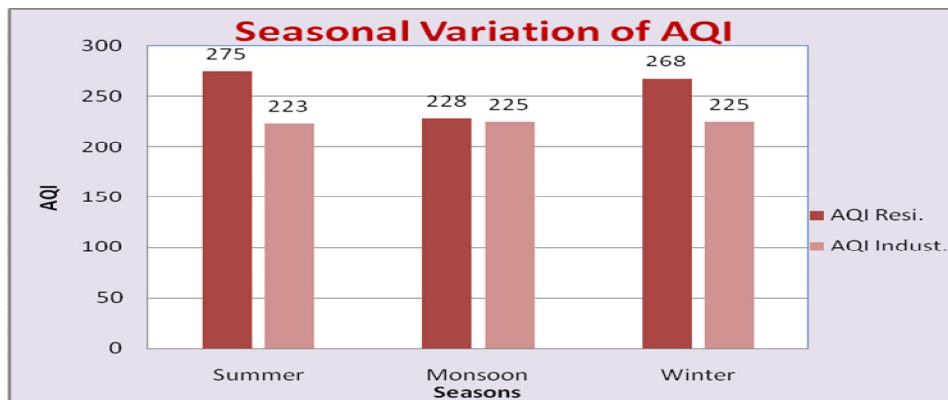
Graph-4

Table 7. Seasonal, Minimum, Maximum and Average concentration of pollutants ($\mu\text{g}/\text{m}^3$) at residential and industrial sites.

Season	Pollutant	Residential			Industrial		
		Min.	Max.	Avg.	Min.	Max.	Avg.
Summer	SO ₂	8.95	13.03	11.15	8.97	13.79	11.28
	NO _x	35.75	60.02	46.63	38.33	60.60	48.34
	RSPM	103.00	127.00	112.37	83.00	110.00	97.00
	NRSPM	201.00	368.00	274.87	188.00	266.00	223.62
	AQI	275			223		
Monsoon	SO ₂	7.58	13.96	10.56	7.51	12.42	10.08
	NO _x	28.09	50.65	37.70	31.27	49.37	38.71
	RSPM	61.00	118.00	98.25	82.00	106.00	97.50
	NRSPM	92.00	268.00	201.37	143.00	253.00	199.50
	AQI	228			225		
Winter	SO ₂	7.74	11.87	10.22	7.75	12.21	10.11
	NO _x	33.57	49.14	40.24	33.37	50.27	42.87
	RSPM	94.00	141.00	110.50	89.00	107.00	97.37
	NRSPM	212.00	350.00	244.50	187.00	282.00	226.37
	AQI	268			225		



Graph-5



Graph-6

III. RESULTS AND DISCUSSION

The monthly minimum, maximum, and average concentrations of SO₂ and NO_x monitored at residential and industrial sites have been presented in table 3 and table 4.

A. Sulphur dioxide (SO₂)

The monthly minimum, maximum, and average concentrations at residential site were 7.58µg/m³, 13.96µg/m³ and 10.64µg/m³ respectively. The highest concentration of SO₂ (19.96µg/m³) at residential site was recorded in the month of July followed by March (13.03µg/m³). The lowest concentration of SO₂ (7.58µg/m³) was observed in month August at residential site. The monthly minimum, maximum and average concentrations at industrial sites were 7.51µg/m³, 13.79µg/m³ and 10.49g/m³ respectively. The industrial site generally recorded the lower concentrations of SO₂ compared to the residential site. The SO₂ concentration at industrial site was observed highest (13.79µg/m³) in the month of April followed by (13.17µg/m³) in March while 7.51µg/m³ was reported lowest in month of August. Monthly mean variation of SO₂ is as shown in Graph-1.

The seasonal trend in concentration of SO₂ was observed during the study (table 7). The highest seasonal concentration of SO₂ at residential site was observed in Monsoon (13.96µg/m³) followed by summer (13.03µg/m³). The least concentration of SO₂ at residential site was observed in monsoon season (7.58µg/m³). Unlike to residential site industrial site recorded highest concentration of SO₂ in summer (13.79µg/m³) followed by Monsoon (12.42µg/m³) and lowest was reported in Monsoon season (7.51µg/m³). Seasonal mean variation of SO₂ is as shown in Graph-5.

Mean annual minimum, maximum and average concentration of SO₂ at residential site obtained were 9.13µg/m³, 12.16µg/m³ and 10.64µg/m³ respectively. While mean annual minimum, maximum and average concentration of SO₂ at industrial site obtained were 9.07µg/m³, 11.91µg/m³ and 10.49µg/m³ respectively, which were well below the national ambient air quality standards (NAAQS) stipulated by the central pollution control board (CPCB 2009)³⁸.

B. Oxides of Nitrogen (NO_x)

The monthly minimum, maximum and average concentrations of oxides of nitrogen (NO_x) at residential site were 28.09µg/m³, 60.02µg/m³ and 41.42µg/m³ respectively. The highest monthly concentration was reported in February (60.02µg/m³) followed by March (59.40µg/m³), while 28.09µg/m³ being lowest reported in the August. The monthly minimum, maximum and average concentrations of oxides of nitrogen (NO_x) at industrial site were 31.27µg/m³, 60.60µg/m³ and 43.57µg/m³ respectively. The highest monthly concentration was reported in April (60.60µg/m³) followed by March (53.01µg/m³), while 31.27µg/m³ being lowest reported in the August. Monthly mean variation of NO_x is as shown in Graph-2).

Seasonally the highest mean concentration was observed during Summer (60.02µg/m³) at residential site and also during Summer (60.60µg/m³) at industrial site. The lowest concentration of NO_x at residential site was observed during Monsoon (28.09µg/m³) while at industrial site it was recorded (31.27µg/m³) during monsoon. The annual mean concentration of NO_x at residential and industrial site was recorded 41.52µg/m³ and 43.57µg/m³ respectively which were found below the NAAQS (CPCB 2009). Seasonal mean variation of NO_x is as shown in Graph-5.

The major contributors of Sulphur dioxide (SO₂) and oxides of nitrogen (NO_x) to ambient air are automobiles and industries³⁹. The seasonal concentration pattern of air pollutants is driven by emission characteristics of the dominant sources and meteorological conditions¹³. Investigators⁴⁰⁻⁴² reported similar outcome.

C. Particulate Pollutants

The monthly minimum, maximum and average concentration of RSPM and NRSPM monitored at residential and industrial site has been reported in table No.5 & 6.

- 1) *Respirable suspended particulate matter RSPM ($\leq PM_{10}$)*: The annual mean concentration of RSPM (PM_{10}) at residential site was observed $107\mu\text{g}/\text{m}^3$ which is above the maximum permissible limits of NAAQS (Table 1). The highest monthly mean concentration $141\mu\text{g}/\text{m}^3$ was recorded in the month of January while the lowest $61\mu\text{g}/\text{m}^3$ reported during August. Seasonally Winter recorded highest levels of RSPM $141\mu\text{g}/\text{m}^3$ at residential site and in Summer at industrial site as $110\mu\text{g}/\text{m}^3$. The monthly mean concentration of RSPM at residential site was $107\mu\text{g}/\text{m}^3$. While at industrial site it was $97.29\mu\text{g}/\text{m}^3$. Monthly mean variation of RSPM is as shown in Graph-3. The annual mean reported at industrial site was $97.29\mu\text{g}/\text{m}^3$ which violated the existing NAAQS. Seasonal mean variation of RSPM is as shown in Graph-7.
- 2) *Non Respirable Suspended particulate matter (NRSPM) $\geq PM_{10}$* : The monthly mean concentration of NRSPM was ranged between $92\text{-}368\mu\text{g}/\text{m}^3$ and $143\text{-}282\mu\text{g}/\text{m}^3$ and annual mean concentration were recorded $240.25\mu\text{g}/\text{m}^3$ and $216.50\mu\text{g}/\text{m}^3$ at residential and industrial site respectively. The highest monthly mean concentration at residential site was observed $368\mu\text{g}/\text{m}^3$ in February followed by $350\mu\text{g}/\text{m}^3$ in January. At industrial site the highest NRSPM concentration $282\mu\text{g}/\text{m}^3$ was recorded in January followed by $266\mu\text{g}/\text{m}^3$ in March, whereas the lowest NRSPM at residential site was recorded in August $92\mu\text{g}/\text{m}^3$. Monthly mean variation of NRSPM is as shown in Graph-4. Significant seasonal variations in NRSPM concentrations were found at both the monitoring sites. The highest mean NRSPM levels were recorded in summer with $368\mu\text{g}/\text{m}^3$ followed by $350\mu\text{g}/\text{m}^3$ in winter at residential site. While highest mean NRSPM levels were recorded in winter $282\mu\text{g}/\text{m}^3$ followed by $266\mu\text{g}/\text{m}^3$ in summer at industrial site. Lowest NRSPM concentration for both the sites was recorded in Monsoon as $92\mu\text{g}/\text{m}^3$ for residential and $143\mu\text{g}/\text{m}^3$ for industrial sites. Seasonal mean variation of NRSPM is as shown in Graph-5. Automobiles, emissions from industries^{7, 43, 44} along with dust and construction, waste burning are the main contributors of particulate pollutants in ambient air. The seasonal variation pattern of RSPM and NRSPM concentration can be understood from the values presented in table 7. The variation pattern is caused by the meteorological factors like vertical mixing in summer and frequent inversions in winter^{13,42,45}. The pattern for urban sites are basically analogous for both summer and winter signifying that most important emission sources are seasonally independent for urban areas and are certainly traffic emissions and industries⁴⁶. Seasonal mean variation of AQI is as shown in Graph-6. AQI values obtained are 257 and 224 at respective sites due to higher particulate matter indicate⁴⁷ poor or unhealthy pollution grade as per the rating scale (table 2). Members of sensitive groups such as older adults and children may suffer from health effects like heart or lung disease on prolong exposure and at higher risk compared to general public⁴⁸.

IV. CONCLUSIONS

Analysis of temporal and spatial variations of SO_2 , NO_x , RSPM and NRSPM based on one-year study of constant measurements at Jalna area (residential and industrial site) shown that the particulate as well as gaseous pollutants concentration at both sites were found to be elevated and comparable caused by wind flow directions and location of sites. The annual mean gaseous pollutants measured at residential site were found inside the permissible limits of NAAQS, whereas RSPM and NRSPM concentrations violated the prescribed limit at residential as well as at industrial site. The seasonally for SO_2 , NO_x , RSPM and NRSPM at both sites generally showed higher concentration during summer, intermediate in winter and lowest in monsoon. Only RSPM showed nearly similar trend seasonally at industrial site. The overall Ambient air quality was found to be better in Monsoon compared to winter and then summer.

V. ACKNOWLEDGEMENTS

Authors are thankful to Director, Maharashtra pollution control board (MPCB), Aurangabad for providing financial, technical and scientific support for the present study. We also extend our thanks to Badrinarayan Barwale College, Jalna for providing laboratory and basic infrastructure facilities. We are also thankful to Enviro-tech lab for useful co-operation, guidance, suggestion and those who help directly and indirectly for this work.

REFERENCES

- [1] Atash F. 2007. The deterioration of urban environments in developing countries: Mitigating the air pollution crisis in Tehran, Iran, ScienceDirect, 24 (6): 399-409.
- [2] Baladauf R W, Watkinns N, Heist D, Bailey C, Rowley P and Shores R. 2009. Near air quality monitoring factors affecting network design and interpretation of data, Air Quality Atmosphere and Health, 2: 1-9.
- [3] Tashiro Y and Taniyama T. 2002. Atmospheric NO_2 and CO concentration in Lima, Peru, Environmental International 28: 227-333.

- [4] Harison R M and Yin J. 2000. Particulate matter in the Atmosphere: which particle properties are important for its effects on health? *The Science of the Total Environment*, 249(1-3): 85-101.
- [5] Kim K H, Lee J H, and Jang M S. 2002. Metals in Airbourne particulate matter from first and second industrial complex area of Taejon City, Korea, *Environmental Pollution*, 118, 41-51.
- [6] Sharek M, Cupre P, Bartos T, Kohutek J, Klanova J and Holoubek I. 2007. A combined approach to the evaluation of organic air pollution. A case study of urban air in Sarajevo and Tuzla (Bosnia and Harzegovina), *Science of the total Environment*, 384 (13): 182-193.
- [7] Hrdlickova Z, Michalek J, Kolar M and Vesley V. 2008. Identification of factors affecting air pollution by dust aerosol PM₁₀ in Brno city, Czeck Republic, *Atmospheric Environment*, 42(37), 8661-8673.
- [8] Gupta A K, Patil R S and Gupta S K. 2003. A long term study of oxides of nitrogen, *Journal of Environmental Science and Health*, 38: 2877-2894.
- [9] Celis J E, Morales J R, Zaror C A and Inzunza J C. 2004. A study of particulate matter PM₁₀ composition in the atmosphere of Chile, *Chemosphere*, 54(5) : 541-550.
- [10] Zhang M, Song Y and Cai X. 2007. A health based assessment of particulate air pollution in urban areas of Beijing in 2000-2004, *Science of the Total Environment*, 378(13) 3: 100-108.
- [11] Franchini M and Mannucci P M. 2007. Short term effects of air pollution on cardiovascular disease outcomes and mechanisms, *Journal of Thrombosis and Haemostasis*, 5(11) : 2169-2174.
- [12] Allen R W, Davies H, Cohen M A, Mallach G, Kaufman J D and Adar S D. 2009. The spatial relationship between traffic generated air pollution and noise in 2 US cities, *Environmental Research*, 109(3): 334-342.
- [13] Gomiscek B, Stopper S, Preining O and Hauck H. Spatial and temporal variations in PM₁, PM_{2.5}, PM₁₀ and particle number concentration during AUPHEP project, *Atmospheric Environment*, 38 : 3917-3934, 2004.
- [14] Rao B P S, Mhaisalkar V M, Kumar A, Shrivastava A, and Devotta S. 2009. Seasonal variations of Ambient levels of Sulphur dioxide in and around a typical Indian petroleum Refinery, *International Journal of Earth Sciences and Engineering*, 2(3): 231-237.
- [15] Suess M J. 1979. An International approach to air quality monitoring, *Atmospheric Environment*, 13:211-221.
- [16] Titta P, Raunemma T, Tissari J, Vli-Tuomi T, Leskinen A, Kukkonen J, Harkonen J and Karppinen A. 2002. Measurements and modeling of PM_{2.5} concentrations near a major road in Kuopio, Finland, *Atmospheric Environment*, 36:4057-4068.
- [17] Bishnoi B, Amit P and Jain V K. 2009. A comparative study of air quality index on factor analysis and US. EPA methods for an urban Environment, *Aerosol and Air Quality Research*, 9:1-17.
- [18] Ott W R, Jr. Hunt W F. 1976. A quantitative evaluation of the pollutant standard index, *Journal of Air Pollution Control Association*, 26:1950-1954.
- [19] Ott W R and Thom G C. 1976. A critical review of air pollution index systems in the United States and Canada, *Journal of Air Pollution Control Association*, 26:460-470.
- [20] USEPA. 2014. United States Environment Protection Agency.
- [21] Ontario Review of the Ontario air quality index and air quality health index system. 2013. Air resonance Branch, Ontario ministry of the Environment, Toronto, Ontario, Canada.
- [22] Charan P D, Sahel H. 2014. Study of respirable dust in Ambient Air of Bikaner city and its impact on human health, *Applied Journal of Hygiene*, 3(1): 11-14.
- [23] Sarella G, Khanbete A K. 2015. Ambient Air Quality, Analysis using Air Quality Index. A case study of Vapi, India, *International Journal for Innovative Research in Science & Technology*, 1(10): 68-71.
- [24] Air Quality Status of Maharashtra 2013-2014, Compilation of Air Quality data recorded by MPCB. 2014.
- [25] B S Dobhal, R P Shimpi and Mazahar Farooqui 2020. Ambient Air Quality Assessment of Jalna City(MS), India, *Indian Journal of Scientific Research*: 10(2);45-53.
- [26] B S Dobhal, R P Shimpi and Mazahar Farooqui 2019. Evaluation of Ambient Air Quality of Jalna City (MS), India, *International Journal of Research and Review*, 6 (12):341-351.
- [27] B S Dobhal, R P Shimpi and Mazahar Farooqui 2020. Comparative Study of Ambient Air Quality of Jalna City (MS), India, *International Journal of Innovative Science and Research Technology*, 5(6): 219-225.
- [28] Rajajoseph D, Mathan Y and Rajivgandhi V. 2014. Efficient and Environment friendly NOx emission reduction design of Aero Engine gas turbine Combustor, *IJEP*, 34(8), 645-652.
- [29] Erika VonSchueidemesser, Paul S Monks, James D Allens, Lori Bruhwiler, Piers Forster, David Flower, Alex Lauer, William T Morgan, Pauli Passonen, MattiaRighi, Katerinasindelarova and Mark A Sutton. 2015. Chemistry and linkage between air quality and climate change, *Chemical Reviews*, 115, 3856-3897.
- [30] Harison R M and Yin J. 2000. Particulate matter in atmosphere; which particle properties are important for its effects on health, *The Science of the total Environment*, 249, 85-101.
- [31] UNCSO. 2001. Protection of the atmosphere- Report to the secretary General, E/CN.17/2001/2, commission for sustainable Development, New York, USA.
- [32] CPCB (Central Pollution Control Board) 2011. Guidelines for the measurements of Ambient Air Pollution in New Delhi, India (1):55.
- [33] IS 5182.2, 2001. Methods for measurement of Air pollution part-2, Sulphur Dioxide (CHD 32: Environmental Protection and Waste measurement)
- [34] Jacob M B and Hochheiser S. 1958. Continuous Sampling and ultra micro determinations of nitrogen dioxide in air, *Analytical Chemistry*, 30:426.
- [35] IS 5182-2, 2001. Methods for measurement of Air pollution, Part 6: oxides of nitrogen (CHD 32: Environmental protection and waste management).
- [36] Bortnick S M, Coutant B W and Eberly S I. 2002. Using continuous PM_{2.5} monitoring data reports on Air Quality Index, *Journal of the Air and waste management Association*, 52: 104-112.
- [37] Murena F. 2004. Measuring air quality over large urban areas; Development and application of an air pollution Index at the urban areas of Neples, *Atmospheric Environment*, 38: 6195-6202.
- [38] CPCB (Central Pollution Control Board) Indian National Ambient Air Quality Standards, New Delhi.
- [39] Muschate N S and ChougaleA M. 2011. Study of ambient concentration of air quality parameters (PM₁₀, SPM, SO₂ and NOx) in different months, *European Journal of Experimental Biology*, 1(1), 90-96.



- [40] Bhanarkar A D, Gajphate D. G and Hasan M Z. 2002. Air pollution concentration in Haryana sub-region, India, *Bulletin of Environmental Contamination and Toxicology*, 69: 690-695.
- [41] Kaushik C P, Ravindra K, Yadav K, Mehta S and HaritashA K. 2006. Assessment of ambient Air Quality in urban centers of Haryana(India) in relation of different anthropogenic activities and health risks, *Environmental Monitoring and Assessment*, 122: 27-40.
- [42] Chauhan A, Pausar M, Kumar R and Joshi P C. 2010. Ambient Air Quality studies in Uttarakhand (India): a case study of Haridwar and Deharudan using air quality index, *Journal of American Science*, 6(9): 565-574.
- [43] Watkins L H. 1991. *Air Pollution from Road Vehicles*, Transport and Road Research Laboratory, London, UK.
- [44] Nylund N O and Lawson A. 2000. Exhaust emissions from Natural gas vehicles Helsinki, International Association of Natural Gas Vehicles VTT Energy.
- [45] Gehrig R and Buchanann B. 2003. Characterizing Seasonal Variations and spatial distribution of Ambient PM₁₀ and PM_{2.5} concentrations based on long term Swiss monitoring data, *Atmospheric Environment*, 37(19): 2571-2580.
- [46] Buzorius G, HameriK, Pekkanen J and Kulmala M. 1999. Spatial variation of aerosol number concentration in Helsinki city, *Atmospheric Environment*, 33(4): 553-565.
- [47] Pallavi Pant, Raj M Lal, Sarath K Guttikunda, Armistead G Russel, Ajay S Nagpure, Anu Ramaswami, Richard E Peltier 2018. Monitoring particulate matter in India: recent trends and future outlook, *Air quality, Atmosphere and Health*, <https://doi.org/10.1007/s11869-018-0629-6>.
- [48] Afroz R, Hassan M N, Ibrahim N A. 2003. Review of air pollution and health impact in Malaysia. *Environ. Res.*, 92:71-77.



10.22214/IJRASET



45.98



IMPACT FACTOR:
7.129



IMPACT FACTOR:
7.429



INTERNATIONAL JOURNAL FOR RESEARCH

IN APPLIED SCIENCE & ENGINEERING TECHNOLOGY

Call : 08813907089  (24*7 Support on Whatsapp)