



IJRASET

International Journal For Research in
Applied Science and Engineering Technology



INTERNATIONAL JOURNAL FOR RESEARCH

IN APPLIED SCIENCE & ENGINEERING TECHNOLOGY

Volume: 9 Issue: 1 Month of publication: January 2021

DOI: <https://doi.org/10.22214/ijraset.2021.32953>

www.ijraset.com

Call:  08813907089

E-mail ID: ijraset@gmail.com

Home Automation using Antithefting

S. Kaviya¹, Dr. R. Porkodi²

¹PG Student, Department of Computer Science, Bharathiar University, Coimbatore, Tamil Nadu

²Associate Professor Department of Computer Science, Bharathiar University, Coimbatore, Tamil Nadu

Abstract: *The objective of Antithefting system is to style an Electronic Security Controlled System for homes and public places like banks, malls, etc... The electronic security system is placed within lockers and money boxes.*

When AN unauthorized person tries to open the locker door and uses a torch light-weight to seek out the precious things, the torch light-weight falls on the LDR giving a symptom to the buzzer. Together with security planned system provides sensible management (ON/OFF) of varied appliances like fan, light bulb, TV etc. exploitation Bluetooth.

Now a days, folks have smartphones with all of them the time. Thus it is smart to use these to manage home appliances. Home automation has utterly modified the vision of home appliances within the world. The technique is

New, however it's terribly wide scope on the bread and butter of essentially unfit folks and for the price economical energy savings. The voice recognition module ought to be ready 1st before it are often utilised to understand charges. Upon effective recognition of voice command the Arduino drives the relating load with the help of the transfer circuit. The exactness of voice recognition module is likewise calculable in numerous conditions. The check comes concerning approve the weather of the planned system. The outcomes demonstrate the system will offer extraordinary paw to the physically challenged people with no third individual's assistances.

Keywords: *Voice Recognition, Home Automation System, Physically Challenged People, Adriano Uno, LDR (Light Dependent Resistor).*

I. INTRODUCTION

Anti-theft systems defend valuables like vehicles and private property like wallets, phones, and jeweler. Home automation system is use of knowledge technologies and system to scale back the human labor. The rising of technologies influence North American nation to use smartphones to remotely management the house appliances.

An automated devices has ability to figure with skillfulness, diligence and with lowest error rate. The concept of home automation system may be a vital issue for researchers and residential appliances corporations. Automation system not solely helps to decrease the human labor however it conjointly saves time and energy. Thieving is one in all the foremost common and oldest criminal behaviors. The home automation systems square measure learning quality step by step due to their usability and wide tasks capacities. Coordinative voice recognition innovation to home automation systems create the system easier to use and easy to figure. Some need home automation system to fulfil their requirements and solace

Whereas for physically challenged folks it will offer nice facilitate.

In the Home Automation System, user will management his home appliances from anyplace within the world by exploitation the web site or golem app wont to management the system. System connects to the net through Wi-Fi and so makes a stable feedback reference to server and GUI incessantly observance the commands send by the user. The user will send numerous management commands from UI (android app/Website) then the system operates as per command sent by the user.

The system sends alerts to the owner over voice calls exploitation the net if Any kind of human movement and emergencies like hearth and different condition is detected close to the doorway or within the house and raises an alarm optionally upon the user's discretion. The availability for causation alert messages to involved security personnel just in case of an essential scenario is additionally engineered into the system. The user/owner will create arrangements like gap the door, change on numerous appliances within the house, that are connected and controlled by the micro-controller within the system to welcome his guests just in case of inaccessibility.

A. Technology

Theft is one in all the foremost common and oldest criminal behaviors. From the invention of the primary lock and key to the introduction of RFID tags and identity verification, antitheft systems have evolved to match the introduction of recent inventions to society.

II. OVERALL TECHNOLOGY

A. Home Automation

The home automation circuit is created around associate Arduino Uno board, Bluetooth module HC-05 and a 4-channel relay board. The number of channels depends on the number of appliances you would like to manage. The relay module and Bluetooth module area unit usually, in turn, powered employing a board power provide of Arduino Uno.

B. Antitheft System

The LDR detects a modification among the strength once the locker/safe is open unauthorized and it powers the Arduino board once high strength is gift. The board is pre-programmed in such the sole implies that it sends a message to the owner or authorized person and anxious officers through the GSM instrumentation that's interfaced serially.

The LDR circuit that's connected to the inner aspect of the locker, in real time detects any slight glimmer of sunshine getting into from outside. The remaining circuit (Arduino and GSM) comes outside the locker and is invisible to the offender as a results of it lies behind the locker case. Pin A5 is connected to the output of LDR circuit in such the sole implies that once pin A5 is at ground the Arduino board can send the signal to GSM module to send SMS.

C. Arduino UNO

Arduino could also be a image platform (open-source) supported associate easy-to-use hardware and code. It consists of a board, which might be programed (referred to as a microcontroller) and a ready-made code known as Arduino IDE (Integrated Development Environment) that is utilized to jot and transfer the pc code to the physical board. Arduino Uno could also be a microcontroller board supported the ATmega328P (datasheet). it's fourteen digital input/output pins (of that 0.5 a dozen area unit usually used as PWM outputs), 0.5 a dozen analog inputs, a sixteen megacycle quartz, a USB association, academic degree influence jack, associate ICSP header and a button. It contains everything required to support the microcontroller; simply connect it to a pc with a USB cable or power it with Associate AC-to-DC adapter or battery to urge started.



Figure.1. Arduino Uno

D. GSM Module

A GSM module (SIM300) or a GPRS module could also be a chip electrical circuit which can be accustomed establish communication between a mobile device or a machine and a GSM or GPRS system.

The instrumentation (modulator-demodulator) could also be a big [*fr1] here. These modules consists of a GSM module or GPRS instrumentation powered by academic degree influence provide circuit and communication interfaces (like RS-232, USB 2.0, and others) for pc. A GSM instrumentation area unit usually an infatuated instrumentation device with a serial, USB or Bluetooth association, or it area unit usually a movable that provides GSM instrumentation capabilities.

E. GSM Modem

A GSM instrumentation could also be a tool which might either a movable or a instrumentation device which might be accustomed build a pc or the other processor communicate over a network. A GSM instrumentation wishes a SIM card to be operated and operates over a network vary signed by the network operator.

GSM could also be a cellular network. GSM network operate in four whole fully totally different frequency ranges. Most GSM network operates in 900 megacycle or 1800 megacycle bands. The transmission power among the phone phone is restricted to a most of two watts GSM 850/900/300 and 1watt in 1800/1900. The longest distance the GSM specification supports in wise use is 35Km (22 mi). Throughout this paper we've associate inclination to use SIM300 based totally GSM instrumentation to receive and send short message to the owner and fully totally different involved persons.

F. Ultrasonic Sensor

The silent device sends out a high-frequency thousand pulse therefore times however long it takes for the echo of the sound to mirror back. This device is used here to go looking out the position of the automotive.

The silent device sends out a high frequency thousand pulse therefore times however long it takes for the echo of the sound to mirror back. The device has two openings on its front. One gap transmits silent waves, (like slightly speaker), the opposite receives them, (like slightly microphone).

The speed of sound is around 341 meters (1100 feet) per second in air. The silent device uses this data in conjunction with the time distinction between effort associated receiving the sound pulse to envision the world to academic degree object.

G. Gas and Smoke Sensor

This device is used to go looking out the gas leak and smoke occurring in home business or in malls. Will be} typically accustomed notice gases like LPG, butane, propane, methane, alcohol, hydrogen, smoke. There unit of measuring differing kinds of gas device that detects {different totally whole fully totally different completely different} gases per different concentration parameter. Here we've associate inclination to face live exploitation MQ-5 & MQ-2 gas and smoke sensors that notice coal gas/ methane/ LPG and flammable gas/smoke severally.

H. LDR (Light Dependent Resistor)

The LDR could also be a resistance whose resistance varies reciprocally with the intensity of sunshine incident on it. Its resistance will vary from four hundred four hundred (for thousand lx light) to as high as ten seven seven (for ten lx light). Therefore, even with a little modification in incident strength, there's a huge modification in resistance, therefore creating the measuring reliable.

It is provided on board to interface the board with the \$64000 world lambent intensity as a results of the parameter. It's connected among the lower [*fr1] a realizable divider configuration with a 10K ohm resistance, so the resistor-LDR junction voltage is reciprocally proportional to the number of sunshine incident on it.

I. HC-05 Bluetooth Mode

HC-05 module may well be a simple to use Bluetooth SPP (Serial Port Protocol) module, designed for clear wireless serial association setup. Interface Bluetooth module is totally qualified Bluetooth V2.0+EDR (Enhanced information Rate) 3Mbps Modulation with complete two.4GHz radio transceiver and baseband. It's the footprint as very little as twelve.7mmx27mm. Hope it's reaching to Modify your overall design/development cycle.

J. ESP8266 WIFI

ESP8266 could be a Wi-Fi module. This makes golf stroke your sensors on Infobahn really possible. There's loads of pleasure concerning this detector on the net presently, and folks have done an incredible job deciphering the obscure command structure of this device. There's loads of pleasure concerning this detector on the net presently, and folks have done an incredible job deciphering the obscure command structure of this device.

K. MIT App Inventor

Android application for smartphone is created by MIT App artificer MIT App artificer is associate intuitive, visual programming surroundings that enables everybody – even kids – to make totally practical apps for smartphones and tablets. Those unaccustomed MIT App artificer will have an easy 1st app up and running in but half-hour. And what is a lot of, our blocks based tool facilitates the creation of advanced, high-impact apps in considerably less time than ancient programming Environments. The MIT App artificer project seeks to democratize computer code development by empowering all Folks, particularly youth, to maneuver from technology consumption to technology creation.

L. Voice Recognition

The voice recognition primarily based home automation system could be a coordinated system to encourage the older associated physically tested people with an effortlessly worked home automation system that works utterly on voice commands. The speech contribution from electronic equipment is given to the voice recognition module wherever the speech flag is contrasted and therefore the already place away ready voice tests. Upon fruitful recognition of voice summon the Arduino microcontroller incites the relating electrical widget like turning on lights.

M. Microphone and Voice Recognition Module

The electro-acoustic transducer accustomed get voice commands to the voice recognition module could be a basic neck compose electro-acoustic transducer with three.5 mm jack. Alehouse voice recognition module v3 is employed for the voice recognition method as appeared in the voice recognition module ought to be ready before it are often place to actually understand the voice commands.

The speech contribution from the electro-acoustic transducer is given to the voice recognition module and therefore there the data speech is contrasted and the already ready voice commands and if there's a match at that time management activity through feedback loop is taken.

Any help at that time by voice charge he or she might activate the signal for facilitate.

N. Advance IoT Based Home Automation System using Android

The model of the system sends alerts to the owner over voice calls exploitation the net if associate type of human movement and emergencies like hearth and alternative condition is detected close to the doorway or within the house and raises an alarm optionally upon the user's discretion.

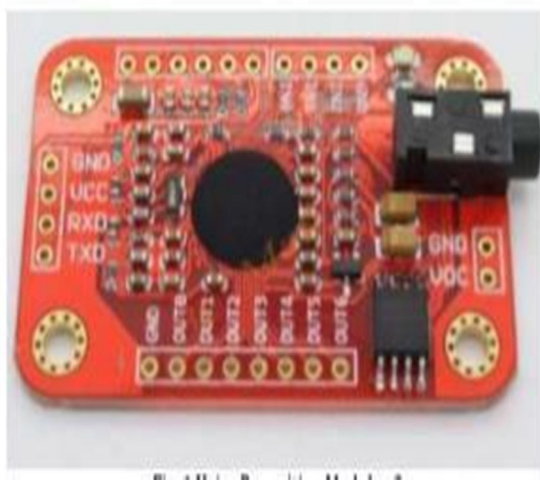


Figure.3. Voice Recognition Module v3

O. Light Sensor

Light poor electrical device is use to find the enlightenment within the space with the goal that the system would closedown beable to the lights once there's adequate sunshine to ascertain something around to preserve vitality.

P. Buzzer

Signal is principle markers of the composed system through that the gatekeepers of the impaired people are often afraid to see unfit person once bell makes a sound and take essential care. On the off probability that the patient wants

The provision for causing alert messages to involved security personnel just in case of an important state of affairs is additionally designed into the system. The user/owner will build arrangements like gap the door, change on varied appliances within the house, that are connected and controlled by the micro-controller within the system to welcome his guests just in case of inconvenience.

The same are often done once the user himself enters the space and by virtue of the system, he will build arrangements from his doorsill specified as before long as he enters his house he will build himself at full comfort while not manually having to modify on the electrical appliances or his favorite T.V. channel for associate Thus exploitation constant set of sensors the twin issues of home security and residential automation are often solved on a complementary basis.

The main block of this method is that the Arduino microcontroller board. There square measure relays to serve the aim of on and off. The ability provide provided for Arduino is 5V.It is given through associate adapter. Then there square measure totally different sensors connected with a microcontroller.

Wi-Fi module (ESP-8266) is connected to the micro-controller that acts as a medium between the interface and knowledge received from the microcontroller.

Q. System Prototype

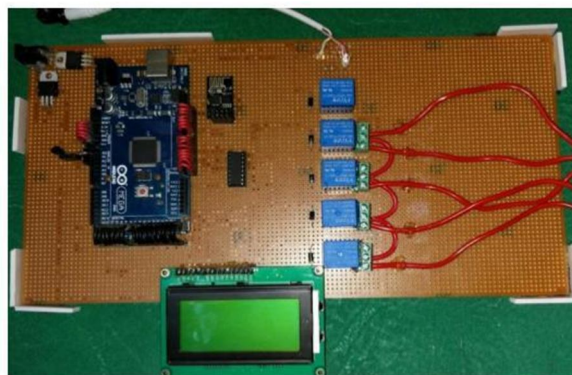


Figure.6. System

R. Prototype

Home automation web site or net app features an instrument panel. Its varied switches on the appliances to regulate them. Whenever user start or OFF the button gift on the net interface then API can hit the factor speak server to update that worth in its info and when this, the controller i.e. Arduino Mega can hit the server with associate API so as the retrieve the standing of the various appliances. once Arduino MEGA hit the factor speak server then factor speak server sends a response to Arduino in JSON type then Arduino MEGA can update the standing of various appliances connected with it by cracking JSON.

When the user activates or OFF the appliance by clicking on the button gift of the instrument panel of web site or net app then API gets dead and updates this worth in factor speak server, when it Arduino MEGA retrieve this updated worth of appliance standing from the factor speak server and when computing and comparison Arduino MEGA turns the output pin of that individual appliance HIGH or LOW severally that connects to the input pin of ULN2003APG (Darlington semiconductor high current gain IC).

III. LITERATURE SURVEY

S: NO	TITLE	AUTHOR	JOURNAL	OVERVIEW OF PAPER	METHODS USED	ABSTRACT THEAM	ACCURACY RESULT OBTAINED	FUTURE WORK
1	Advanc e IOT Based Home Automa tion	Shivam Parashar, Mohd Zaid, Niket Vohra, Sujeet Kumar	Internationa l journal of Advance Research And Developme nt	In this Home Automation System, user can control his home appliances from anywhere System connects to the internet through Wi-Fi and GUI continuously monitoring the commands send by the user.	Arduino for sensor testing	Traditionally electrical appliances in a very home square measure controlled via switches that regulate the electricity to the devices. web of Things (IoT) conceive s the concept of remotely connecting and observance real-world objects through the web.	Today during this century home and offices square measure equipped with numerous machinery. Besides, folks have numerous devices for water sport within the internet. this method will be accessed from all kinds of devices and information will be updated from anyplace.	Feature like capturing the ion of an individual on the move the house and storing it onto the cloud. this may cut back the information storage than victimization the CCTV camera which is able to record all the time.

2	Home Automation System Based on Voice Recognition	Priyal Sunil Doshi	International Research Journal of Engineering and Technology (IRJET)	Coordinating voice recognition innovation to home automation systems build the system easier to use and easy to figure. Some need home automation system to meet physically challenged folks it will offer nice facilitate.	Voice Recognition, Adjustable Bed Motorized Jack, Arduino Uno	Home automation system supported voice recognition to regulate the various home machines. The projected system includes of a voice recognition module, Arduinouno small controller.	The perceived voice order will Arduino to modify the transfer and alter the course of engine attributable to that kill on the lights and sound the ringer once debilitated person require aid.	The utilization of voice commands takes the requireme nt to remote managemen ts and makes it easy to accompan y the system to perform automatio n and control electrical gadgets.
---	---	--------------------	--	---	---	---	--	---

3	Anti-Theft Security System With Reporting and Safety Using Android Application Smart Industrial System using Android ADK	Dhara Gandhi, Nikita Kahar, Priya Prajapati, Jayati Shah, Shreya Patel	International Research Journal of Engineering and Technology (IRJET)	Automation permits America to manage house appliances like light-weight, door, fan, AC etc. It conjointly provides business security and emergency system to be activated.	Embedded System; Android ADK; Android phone	This paper imply style of versatile standalone, low price sensible industrial system, that relies on the robot ADK act with the Arduino Platform providing industrial security and emergency system to be activated.	The system security is high. Adds safely through appliances and lightweight management. Save Time and cash. Increase the peace of mind permits you management once out of city.	This paper implement a smart industry system by controlling the electronic devices at company remotely with an android apps of smart phone and to receive alerts message on phone whenever any sensor is active.
---	--	--	--	--	---	--	---	--

4	<p>IOT Based Smart Home Automation for car theft prevention using image processing</p>	<p>R. Tharani, P. R. Harshani, Dr. M. Newlin Rajkumar, S. Rajalakshmi</p>	<p>International journal of scientific research and development (IJTSRD)</p>	<p>Home Automation is one of the automation system used for controlling Home Appliances automatically. It is used for Indoor, outdoor, lights conditioning in the house, to lock or open the doors and gates to control electrical and electronic appliances using various control system.</p>	<p>car theft Face recognition, controllers, sensors, RFID</p>	<p>This paper introduces automobile stealing hindrance exploitation Face recognition in IoT base Home automation. Internet of things is of connecting of all the devices like sensors actuators and different embedded devices communication protocol.</p>	<p>In this paper using various sensors such as gas sensor and temperature sensors are used and using arduino Uno and ESP8266 user can control home appliances from anywhere.</p>	<p>By using IoT in home automation is very useful for elderly peoples and disabled peoples in home to control the home appliances without direct human interception car theft prevention is more helpful and useful to safeguard our cars.</p>
---	--	---	--	--	---	--	--	--

5	Advanced Anti-Theft & Home Safety System Using GSM	Shivam Kansa, Rishabh Bansa, Shivam Chaurasiya	International Research Journal of Engineering and Technology (IRJET)	The wireless home security system is wont to give security system for residential, industrial, and for all domestic and industrial functions exploitation GSM technique the essential parts of a home automation security system are motion detectors.	Ultrasonic Sensor, Gas Sensor, Smoke Sensor, Motor driver IC, SMS (Short Message Service), GSM Communication	The design of easy hardware circuit permits each user to use this wireless home security system with supersonic device, Gas sensor, Smoke device and Motor driven door lockup system reception.	This paper acknowledges user friendly, low cost, increased home security system. home automation style and wireless networks, easy system to boost the standards is developed.	It is a real-time monitor in a position and remote controlled system developed with easy hardware that simplifies the likelihood of error free security system.
6	Design and Implementation of an IoT-Based Smart Home Security System	Mohammad Asadul Hoque, Chad Davidson	International Journal of Networked and Distributed Computing	(IoT) may be a vision for associate put down network of intelligent, act objects. The convergence of technologies like omnipresent wireless communications analytic and embedded systems has created novel IoT applications attainable in a very multitude of domains.	IoT Arduino Raspberry Pi NodeJS MongoDB RF transmission	Recent advances in smartphones and cheap ASCII text file hardware platforms have enabled the event of affordable architectures for (IoT)-enabled home automation and security systems.	Using cheap parts like small controllers from toy and Raspberry Pi and RF signals as a line between these devices, it absolutely was doable to develop AN IoT system that permits users of a social unit to look at once a specific door has been opened.	This style is used as a reference for additional applications to be developed with this device design, and it provides a framework victimization on the Raspberry Pi through that different sensors is value added to home network.

7	IoT Based Smart Security and Home Automation System	Ravi Kishore Kodali, Vishal Jain, Suvadeep Bose and Lakshmi Boppana	International Conference on Computing, Communication and Automation (ICCCA2016)	The presently designed example of the system sends alerts to the owner over voice calls victimization the web if associatey form of human movement is detected close to the doorway.	TI Wi-Fi CC3200 Launchpad, Internet.	This IoT project focuses on building a smart wireless home security system which sends alerts to the owner by using Internet and raises an alarm optionally.	If the owner is expecting a guest at his house but he is not available there. Now, as the guests reach at his house the owner will receive a video call. The owner can press digits to welcome or even can disable the security system.	As the system is dependent on the user's discretion the use of camera connected to the microcontroller might help the user in taking decisions whether to activate security system.
8	Implementation of Smart Home Automation with Enhanced Security	M. Ummay Hagera, K. Lokesh Krishna, K. Anuradha	International Research Journal of Engineering and Technology (IRJET)	As advanced technologies are evolving day by day, information or raw data plays a very major role in every aspect communicate Particularly when this data is liable to affect their life in close way, then data has to be properly monitored and executed.	Wireless, sensor, simulation, hardware, Wi-Fi, network coverage and actuator.	The lack of ability to access and management the appliances from remote locations is one in all the foremost reasons for power loss. to beat this automatic techniques square measure used in each facet of day to day activities.	In this paper a extremely secured, low cost, remotely controlled, simply accessible sensible house is designed and enforced. The projected system could be a novel implementation and uses WI-Fi technology for dominant the assorted sensors in home.	In future, additional enhancements will be allotted in watching and dominant half. conjointly additional sensors and devices will be connected and monitored.

9	Antitheft System with Android Based Smart Home Automation	Omprakash S. Bharati, Sonali K. Shende, Rahul R. Mendhe, Sukhadaraut.	International Conference on Computing, Communication and Automation (ICCCA)	The rapid climb of technologies influence United States of America to use smartphones to remotely management the house appliances. An automated devices has ability to figure with skillfulness, diligence and with lowest error rate.	Arduino Uno, GSM (Global System for Mobile), MIT app Inventor, LDR(Light Dependent Resistor).	The systems mistreatment micro controller board. The electronic security system is placed within lockers and money boxes. When unauthorized person tries to open the locker door and uses a torch lightweight to search.	This System provide real time information of robbery. Also, the system gives wireless access (ON/OFF) to appliances/devices via android smartphone without going to the switch of respective appliances/devices.	In future the system can be enhanced by increasing number of relays to control (ON/OFF) number of devices.
10	IOT based Theft Preemption and Security System	Safa.H, Sakthi Priyanka. N, Vikkashini Gokul Priya.S, Vishnupriya.S, Boobalan. T	International Journal of Innovative Research in Science, Engineering and Technology	Anti-theft system is any device or methodology wont to forestall unauthorized appropriation of things thought of valuable. Theft preemption supported IOT provides a system.	IOT, esp8266 Wi-Fi, thingspeak, Web server, Theft detection,PI R	Internet of things has been governing the physical science era with cloud services. The paper proposes a unique security system supported Open supply cloud server "things speak .com" and an occasional value esp8266 Wi-Fi module.	Integrating choices of all the hardware components used have developed it. Presence of every module has been reasoned out and placed strictly thus causative to the only operative of the unit.	Today IOT is being implemented everywhere which is of human concern like Smart city, smart environment, security and emergencies, smart business process, smart agriculture

IV. CONCLUSION

Today during this century home and offices area unit equipped with varied machinery. Besides, folks have varied devices for surfing within the internet. Home Automation is unquestionably a resource that is capable of build a home setting machine-controlled. Folks are often in command of their electrical devices via these Home Automation devices and discovered the dominant actions within the digital computer.

The planned approach facilitates the antitheft system so as to produce real time info of theft and finish security to our costly things and cash. The use of voice commands removes the requirement to remote managementlers and alternative electronic contraption and makes it easy to come with the system to perform automation and control electrical gadgets.

Also, the planned system offers wireless access (ON/OFF) to appliances/devices via humanoid smartphone while not progressing to the switch of several appliances/devices. Such associate approach are often used everyplace, wherever antitheft security is very important. This is often associate solely approach that mixes antitheft security with automation that's dominant of varied devices on one board.

The voice recognition based mostly home automation system was assembled and actualized. The use of voice commands removes the requirement to remote managementlers and alternative electronic contraption and makes it easy to come with the system to perform automation and control electrical gadgets. Bell allows incapacitated person to inform the gatekeepers at no matter purpose the person require aid.

V. FUTURE SCOPE

Using this technique as a framework, the system are often expanded embody to incorporate} varied alternative choices that may include home security feature like capturing the icon of someone on the move the house and storing it onto the cloud. This can scale back the information storage than mistreatment the CCTV camera which is able to record all the time and stores it.

The system are often expanded for energy watching or weather stations. This sort of a system with several changes are often enforced within the hospitals for disable folks or in industries wherever the human invasion is not possible or dangerous, and it may also be enforced for environmental watching. In future the system are often increased by increasing variety of relays to regulate (ON/OFF) variety of devices. As antitheft security depends on intensity level this technique fail within the event of theft in no light-weight. This disadvantage are often overcome by mistreatment pressure sensors to double the protection any this technique are often used with emergency door lockup system to automatic shut all the doors at real time within the case of theft.

REFERENCES

- [1] Sheikh IzzalAzid and Sushu Kumar, "Analysis and Performance of a Low Cost SMS Based Home Security System", International Journal of Smart Home, Vol. 5 No. 3, 2011.
- [2] Brian W Evans,"Arduino Programming Notebook", First Edition, Publisher Lulu.com, August 2007
- [3] Arthi.J.E and M.Jagadeeswari, "Control of Electrical Appliances through Voice Commands," IOSR Journal of Electrical and Electronics Engineering, vol. 9, pp. 13-18, February 2014.
- [4] S. M. Anamul Haque, S. M. Kamruzzaman and Md. Ashraful Islam1, "A System for Smart-Home Contro
- [5] R. Hariprakash, G. Venkatramu, S. Ananthi, "University of Madras, K. Padmanahan "Some Problem and Methods for Remotely Controllable Automatic Home 3, July, 2008 Security System" Systems and Networks Communications. ICSNC, 3rd International Conference Publication, ISBN: 9780-76953371-1, (2008) 400-403
- [6] Hosticka, B. J. "Analog Circuits for Sensors" Inst. Of Fraunhofer Microelectronic. Circuits & Syst., IEEE Publication, E-ISBN: 978-1-4244- 1124-5, (2007) 97-102.
- [7] Moshiri B., Khalkhali A. M., Momeni H. R., "Designing a Home Security System Using Sensor Data Fusion with DST and DSMT Methods". Tehran Univ., Tehran; IEEE Publication, (2007) 1-6.
- [8] Rifat Shahriyar, Enamul Hoque, S.M. Sohan, Iftekhar Naim; Remote Controlling of Home Appliances using Mobile Telephony, International Journal of Smart Home, Vol. 2, No.



10.22214/IJRASET



45.98



IMPACT FACTOR:
7.129



IMPACT FACTOR:
7.429



INTERNATIONAL JOURNAL FOR RESEARCH

IN APPLIED SCIENCE & ENGINEERING TECHNOLOGY

Call : 08813907089  (24*7 Support on Whatsapp)