



IJRASET

International Journal For Research in
Applied Science and Engineering Technology



INTERNATIONAL JOURNAL FOR RESEARCH

IN APPLIED SCIENCE & ENGINEERING TECHNOLOGY

Volume: 9 Issue: VI Month of publication: June 2021

DOI: <https://doi.org/10.22214/ijraset.2021.36064>

www.ijraset.com

Call:  08813907089

E-mail ID: ijraset@gmail.com

Speed Sensing Machine using Arduino

G. Pavan Kumar¹, D. N. Chaitanya Chowdary², S. Rohit³, Dr. S. Ramani⁴

^{1,2,3}U.G. Student, ⁴Associate Professor, Dept. of ECE,

Sreenidhi Institute of Science and Technology, Yamnampet (V), Ghatkesar (M), Hyderabad, Telangana-501301 India

Abstract— There are certain rules that some authorities have introduced in case of violation of fastmoving vehicles. Most importantly determine any country regulation on certain roads that is, you will be breaking the law if the speed of your car exceeds this the limit. IR sensors are a large part of a project that detects car speed. Generally, you will be able to use set up IR Sensors on many ways but during this project, we used 2 IR Sensors models and set them 10cm apart. When the moving vehicle reaches the main sensor, the IR Sensor is activated. From this moment on, the timer has been started and can still save time until the car reaches the 2nd IR sensor. By imitating the gap in the middle 2 sensors at 5 meters, you will count the speed at which the vehicle has moved from 1st IR Sensor to 2nd IR Sensor as expected to verify the detection in kmph. All statistics and data collection are done in Arduino and therefore the end is shown in the 16X2 LCD display. This route was introduced to detect the speed of the car or a person in general and a warning to people who go along with providing an automatic buzzer. Currently, a RADAR gun or LIDARS are widely used to speed up the acquisition but require someone to pull the impact of finding speed. during this work it has been proven that automation provides better performance than human management system.

Keywords— Speed Sensors, Arduino Uno, LCD display, Vehicles, Lidars.

I. INTRODUCTION

This project will explain the major design options and create a simple Car Speed Detector using Arduino UNO and IR Sensors. This Arduino Car Speed a detector project usually determines the speed of movement the car. There are certain rules started by the authorities about driving cars on the roads. the common law without any country regulation on certain roads namely, you it may be illegal if your car's speed drops this limit. To find the speed of a moving car, cautious officers often rely on handguns that applies to Radar Technology or Lidar Technology means boring technique that leads the traffic department to evaluate the accuracy of the vehicle's tendency. What if the speeding detection of a car is made automatically? easy automatic detection of car speed aimed at the Arduino Car Speed Detector project, where you will be able to put the system in one place again check results immediately without anyone intervention. We all know that how road accidents cause fast moving vehicles. in the midst of this busy life schedule, people always prefer to drive at high speed at instead of the low speed of success of the other places at a time. Therefore, it is necessary to understand the file the need for technology that can be used as law enforcement program. A helpful program reducing the speed of the car and the owner you will be punished under the law for speeding and this is an easy way to create people driving at a designated speed. In some places, some traffic police are there to watch in the right way the operation of vehicles on the roads and elsewhere, road areas the RADAR system is leased and this is it most of the technology described in redistribution and accuracy of a vehicle with only one trigger can decide. Any traffic violation or more accuracy of a vehicle the whole program even if it is a file for RADAR or another requires a person to do it by hand want to watch cars passing by and going report. All systems use technological advances taking most of the automation over a person guided or expressed apps. Therefore, the traffic monitoring system should be made as automated as possible in many ways. This project is the 1st plan of such a program. This project was developed by detecting all the inaccuracies as it is mentioned above and is called the Speed Check Detector even beyond the speed limit. This method focuses on calculating the speed of an approaching speeding vehicle.

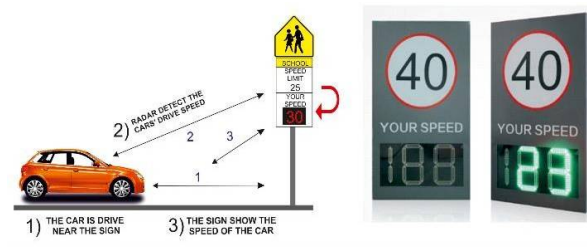


Fig. 1 Speed Detection of a Vehicle

Driving Rash is the reason of many accidents all over the world. 1,50,000 people were killed on Indian roads last year, according to figures released by the govt. The number of traffic people has grown significantly in India as there are no mechanisms in place to control the speed of traffic on the roads. It is to be very effective in finding excessive driving proves by this method. There is no need for such accidents to be the result of drunk driving as any other non-drinker may drive recklessly. To overcome this problem and reduce the risk of death from accidents, it is important to introduce the latest technology to speed up and youth. First of all, given the vast range of driving conditions, the number of control officers is sufficient to observe and analyze all driver behavior. Second, the rules of reckless driving patterns have only descriptive with explanations that cannot clarify the key points of driving at night or in bad weather. within the current system, to detect that rushing police need to use a portable radar gun and aim at the car to record its speed. If the velocity of the vehicle exceeds the speed limit, the near police station is notified to restrict the speedy vehicle.



Fig. 2 Real Time Detection of Vehicle Surveillance

This is often an inefficient work as after you get one you have to report the same and most of your time is spent. With so many vehicles increasing daily, this approach is unreliable on the lives of individuals. hitting from this device of ours will help to search for the speed of the car and taking action about the driving force or the passenger especially helpful for oldsters if their ward crosses the limit the device will come closer quickly with text like showing accuracy of a vehicle of their ward. Several car systems rely on information about the speed of a car to make it work properly. The transfer depends on the vehicle speed information to make the switching strategy. the control systems must monitor the speed of the vehicle to make the correct powder adjustment. ABS systems, power steering systems and engine control systems also use vehicle speed data. The car's speed sensors are naturally modified in the transmission or rear difference, where they are used to control the rotational speed on the drive shaft. These sensors can provide but do not know the speed of the car if one or more tires do not have good pulling or if the car skips. Now a days, it has become commonplace to count and calculate data based through input values on vehicle speed from moving of an object at electrical sensors which are laid out. Vehicle speed sensors may be diminished sensors or visual sensors. the most exciting sensors have a magnetic field above the magnetic pin surrounded by a set coil. This sensor is fitted with a hard and fast distance from the ferromagnetic rotor with teeth. Because the rotor rotates and the tooth enters the proximity of the rod, the magnetic flow inside the coil changes. This fluctuations in flow lead to the coil vibration of the coil. The car engine control module calculates these electrical pipes and uses the speed of the car. But instead of measuring the magnetic field, the optical sensor treads on light permitted to refer optical sensors also produce pulses to rotate a rotor at a frequency range. If you are using an optical sensor, the Rotor will have bright and black marking sensors for illuminated light using photosensors, or a series of bits that allow light from an infrared light source to interact with the phototransistor on the other side.

II. PRINCIPLE

IR devices are a large part of a project that detects car speed. Actually, you will use the IR Sensors set in some way but during this project, I used two IR type sensors and set them aside 10cm. When the moving vehicle reaches the main sensor, the IR Sensor is activated. From this moment on, the timer is activated and can still save time until the car reaches the second IR sensor. By mimicking the space between the two sensors to be 5 meters, as that will already be evaluated during the trial you will be able to count the speed at which the vehicle has moved from IR Sensor 1 and by counting the duration of the time at which coming across IR Sensor 2 that makes the unique of the person whether he/she goes on unlimited speed. Final practical

evaluations are done and input value data checking are done with Arduino and the results are displayed in display module of LCD with 16X2 pins.

III. LITERATURE SURVEY

We have used a unique approach to correlating our IEEE surveys. The first thing is that, we have divided them into multiple avenues of survey research. With an approach such as above, we aim to clearly demarcate the Hardware and Software ingenuity we aim to develop with our project. Using this method, one can easily attribute various survey ideas into their project, by keeping in mind their usage and the problem-solving implementation. Various surveys have been used by us, and these surveys have been divided into hardware and software respectively. This signifies that, there is a separate usage for each side of our development and research. Keeping this in mind, we have taken use of the following papers- “Speed Sensing Machine using Arduino”. Monicca Jein, Pravin Kumer (IEEE). This is a modification that implements the use of speed detection on a speed sensor. “Speed Sensing Machine using Arduino”. Chala Sai kumar, Sreedhar IJCRD (IEEE). This is a modification that implements the use of speed sensing machine using arduino respectively. After choosing the following papers mentioned above, we discussed on how these aspects of papers can be utilized as per the convenience of our project and the prototype respectively. Based on that research and discussion we formed a basic idea of out project that is to be worked on respectively. Based on the above composition of discussion and research, we have performed exhaustive analysis and preform a to achieve good degree of uniqueness in our project that aims to be a prototype and also a product as well. Above literature survey is done in accordance with the college library and also the IEEE Xplore Digital Catalogue Library with proper citations and references.

IV. IMPLEMENTATION

The proposed program consists of two main sections namely phase transfer and power.

A. Transportation Part

There is a transmitter and receiver depending on these Infra Red (IR) sensors that act as transmitters and receivers. The main purpose of this would be to calculate the speed of the car or the individual.

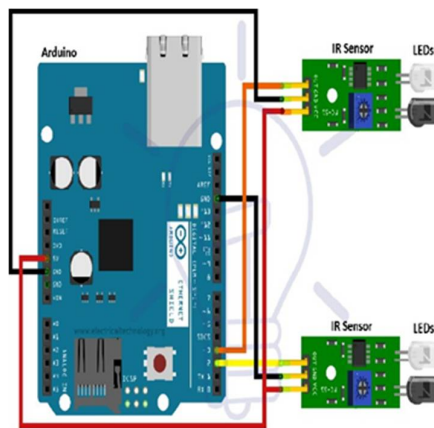


Fig. 3 Functioning of Arduino & IR Sensors

B. Energy

The board needs 5 Volts power to build it to work, the sensor and all the hardware devices running at this power point.

V. SOFTWARE AND HARDWARE SPECIFICATIONS

A. Software used

S / W Tool- Arduino, IR Sensor X2, 16X2 LCD Display

Application- Windows 7 (or) 10

S / W Tool- Arduino.cc (Type 8.1.2)

B. Hardware Requirements

- Arduino Uno,
- IR Sensor x 2,

- 16 × 2 LCD display,
- Resistors-100k Resistor,
- 4.7k Resistor,
- 1k Resistor,
- Male to Male Jumper Wires,
- 9v battery,
- Battery clip,
- Bread board x 2.

C. Arduino Ide



Fig. 4 Arduino IDE

Above the window shows the Arduino IDE home screen. Opens a blank drawing where you will start editing immediately. First, we must always configure board and other settings to allow us to upload code. Connect the Arduino board to the system with a USB cable. you must notify Arduino IDE which board you are loading. Select the toolbar drop-down menu and visit Board. The details are accordingly occupied along with suitable Arduino boards made by Arduino. If you are using Uno or Uno-Compatible Clone, choose or either select Arduino Uno for more compatibility. If you are using another clone, select that board. If you downloaded Arduino IDE before entering your Arduino board, after connecting inside the board, USB drivers must install automatically. The latest Arduino IDE should detect boards that are connected and label them using the COM port. Select the drop-down tools menu and therefore Port.



Fig. 5 Arduino Code in Arduino IDE

Here you have to list all open COM ports, and if there was a known Arduino, it will also provide the name. Choose the port of an Arduino which has connected to the system. If the setup is successful, in the bottom right of the Arduino IDE, you should see the board type and COM number of the board you intend to edit. Arduino board takes the following of COM port; will not always be COM3. One procedure is to check if the board you are using is properly installed to install a “Blink” screen. This drawing is including with all Arduino IDE releases and can be monitored from the File download and visit Examples list of basics of concept and select software of Arduino related to a connected device and upload. Typical Arduino boards include a built-in LED known as "L" or "LED" next to the "RX" and "TX" LEDs, which must be connected to a digital pin 13. This drawing will illuminate the LED in the daily space. And a simple thank you to make sure your board went up well and was

successful in loading code. Open the “Blink” drawing and press the “Upload” button in the upper left corner to upload the “Blink” board. Arduino has the capability of many real time docs. Your best bet if you run into not expected problems is to go online for help. you should be able to find a forum where someone has the same problem you have, and someone has help them to fix it.

D. Arduino Uno

Arduino has the following pin adjustments- There are 28 pins for building input and output from the Arduino board 14 are digital input/output pins and 6 are analog input pins so, these pins are very useful in board to do some useful work generally it even counts the input values of a separate sensors from the sensors and do the choosing support the system so our group has agreed to go on accordingly. The board has an ATMEGA microcontroller which is the heart of the board.



Fig. 6 Arduino Uno

E. LCD Display

The figure below can be a simple LCD display device which is produced under the market of 16X2 display as one will show 16 characters per line and have 2 inbuilt lines. For most embedded projects, LCD modules are widely used due to their low cost, system configuration and availability. The LCD can be an important part of the application to show the speed of a real moving object. LCDs are smaller and lighter compared to LED and electron beam tube. a great application in the field of science and engineering in electrical devices. LCDs offer excellent contrast. LCDs contain microwatts for display compared to other LED watts. the most important applications in the field of science and engineering in addition to electrical devices.

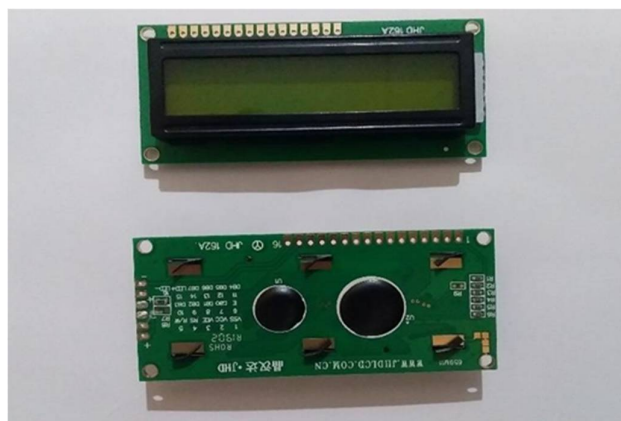


Fig. 7 16X2 LCD Display

F. IR Sensor

The two of IR Sensors are required which is of a Transmitter called LED of an IR and a Receiver called diode consisting of a photon a Comparator IC and some capable components. To arrange an IR based tool which follows the transmitter beside of a receiver of an IR to make the particular connection.

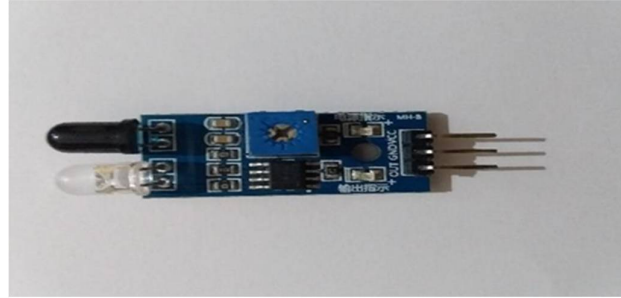


Fig. 8 IR Sensor

In this mode, the IR Transmitter continuously emits infrared frequency and if there is any object before hearing, the amount of infrared radiation hits the object and is bounced back again. The reflected frequency falls on the IR Receiver, which means it detects the sensor. But if there is nothing before the hearing, no actinic rays reappear on the IR Receiver. Some IR Sensors have the only option to produce Analog and Digital Results but here the module used has digital and analog effects i.e., if an object can detect the result is higher and if nothing found the output LOW.

Mathematical Example

Here Arduino calculates the speed of vehicles measured by distance and time relationships

$$s = d / t \text{ (or)}$$

$$\text{Speed} = \text{Distance} / \text{Time}$$

When s = speed of moving object, d = distance between two sensors at once t = time rated by Arduino.

Our main objective is to calculate Time. So, that we can calculate speed. The first IR sensor will be activated when a passing vehicle passes through it. A second IR sensor will be activated when the vehicle passes through the 2nd IR Sensor after passing through the 1st IR sensor. The time difference between these Sensors is calculated and Speed is estimated. If the speed is higher than normal Speed Buzzer will give a sound and L.C.D is displayed as high speed.

VI. CIRCUIT DESIGN

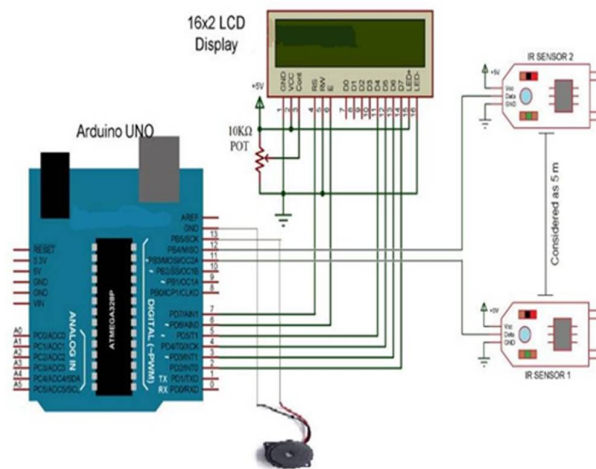


Fig. 9 Speed Detector Circuit Design

As the main IR OUT of the IR Sensor is connected into Arduino's Pin 11 and the second IR one's of IR Sensor is connected to Arduino's Pin 12. The supply voltage has guarded power to the two IR based Sensors. To view the details of the car speed, we used a 16 × 2 LCD. Its data pins i.e., Digital I / O 5-2 pins are connected to D4-D7. 7 and 6 LCD pins are connected to Arduino RS and E pins. the rest of the connection is mentioned within the circuit diagram.

VII. WORKING

The operation of the Arduino based speed detector project is incredibly simple. Arduino will continuously reads the IR sensors of their input values. When the pre-set car detects reach the first sensor, the Arduino alerts and holds the time stamp when the vehicle leaves the primary IR Sensor. When the car arrives a second IR sensor with a timestamp is being recorded. Scanning timestamp `Milis()` Board function is used. Arduino then calculates the measurement by taking a gap of 5 meters between the 2 IR Sensor and showing the lead per kilometer per 16×2 LCD Display.

A. Steps to use Arduino-Based Test-Out Guyer

- Make all necessary attachments regarding the circuit and also upload the code to Arduino.
- Place the two IR sensors on the edge of the bread board so that the displacement between them is about 10 inches.
- Imitate motor movement before the sensor using hands or a toy.
- Arduino will calculate speed and shows the result on 16×2 LCD.

B. Applications

- Helps to accelerate vehicle speed without personal involvement.
- This implementation can be used as a road logger, road calculator and other road related applications.

VIII. RESULT AND DISCUSSION

A clear vision of a speed detector and an LCD display that shows the final output whether the person is following the speed detection rules or not. This device is more efficient to the human need.



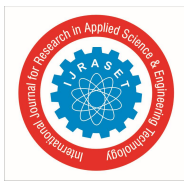
Fig. 10 Speed Sensing Machine Using Arduino Actual Output

IX. CONCLUSION

Vehicle / human speed using Arduino and IR sensors to warn of excess speed for vehicles / people. It is widely used as a sports test, to control speed near restricted areas. As this system collects details of the vehicle / speed of the person accuracy accordingly by displaying on the LCD screen module and also by raising the limit of the speed will result in responding the control department. The continuous detection system controls the speed of the oncoming vehicle. It reduces traffic problems and makes it easier to control car crashes / speeding on highways. So that the police can provide their services with ease and accuracy while sitting in the control room. In the future, the system can be expanded by combining a camera that can take a picture of a car's license plate number and send it to the traffic authorities or the corresponding car owner.

X. FUTURE SCOPE

This project creates a straightforward and easy device for speed photography and speed monitoring, because the number of accidents in highways is increasing day to day, it is therefore necessary to verify the speed of vehicles and reduce the accidents on the highways as well as to provide safe travel by controlling the vehicle by reduction of its accuracy. It also reduces the complexity of the local road door and makes it easier to control collisions on highways. officers can do their job while sitting in the control room and can provide their service freely and accurately. this idea is further expanded in the future by combining a camera with a system that can capture a photo of a car's plate to send that to traffic officials.



XI. ACKNOWLEDGEMENT

We would like to thank our Guide Dr. S. Ramani, Associate Professor and our Project Coordinator Dr. Shruti Barghava, Associate Professor for giving us her constant guidance, support and motivation throughout the period this course work was carried out. Her readiness for consultation at all times, his educative comments and assistance even with practical things have been invaluable. We are thankful that he gave us the freedom to do the work with our ideas. We express our sincere gratitude to Dr. S. P. V. Subba Rao, Head of Department, and ECE for helping us in carrying out this project giving support throughout the period of our study in SNIST. We are also thanking to our Principal Dr. Shiva Reddy for giving us his guidance and support, motivation throughout the period of our B. Tech course work was carried out. We convey our special thanks to Honourable Executive Director Dr. P. N. Reddy, SNIST for his continuous support in maintaining pleasant and friendly atmosphere in campus for studies and course work. We are also thankful to all the teaching and non-teaching staff of our department who has rendered their co-operation in completion of this seminar report. We cannot close prefatory remarks without expressing my thankfulness and reverence to the authors of various papers we have used and referred to in order to complete our report.

REFERENCES

- [1] Anjaali kumarii, Mallhar Mallhar Mohete, Visal Pande, Sidhesh Desay, Suupriya Malhotra, "Radio Occupied Frequency Detected across Speed", *Surveillance of Electronics and Electrical Engineering of a Global Institution*.
- [2] Monicca Jein, Pravin Kumer, Pria Singh, Chavi Narayana, Aroora, Ankitha Sharma, *International Journal of Computer Science and Mobile Executing a Surveillance of CSE*. "Irrigation Water Facility of Speed Sensing".
- [3] Design and Implementation of Road Traffic Management PC Management Skills "by Ne Hilain, Zew Men Htan, Hle Mya Thun *International Journal of Science & Technology Research* published at 2018 in the month of June 9th.
- [4] Chala Sai kumar, Sreedhar IJCRD, Amernarayan, Ajai kumar, Chendra Mohuan 2016 June Speed Control of Automatic Automatic System.
- [5] Nihal Kasem, Ahmedh E. Koshba and Moustafa Youssef, *IEEE 78th VTC*. RF-detection vehicles and accuracy limits.
- [6] Rajeesh Khanan Megalingam, Vinith Mohan, Paul Leon, Rezwin Shoja and Ajai M, viewed *Global Human Technology Conference* at 2015.
- [7] The identification of a vehicle for automatic visual identification system,"The World Conference on Education and Technology" in July 2010 by Tahir Muhammadh Qaadri and Muhammadh Ashish.
- [8] Shir-Long Jung, Wei-Hua Chieeng and Hsiang-PinnLu Speed Route Use Side View Car Radar Examiner Paper Transaction through transport device.
- [9] "Car Detection Based module of a Camera" done by G. Jono, C. Adiyatna.



10.22214/IJRASET



45.98



IMPACT FACTOR:
7.129



IMPACT FACTOR:
7.429



INTERNATIONAL JOURNAL FOR RESEARCH

IN APPLIED SCIENCE & ENGINEERING TECHNOLOGY

Call : 08813907089  (24*7 Support on Whatsapp)