



iJRASET

International Journal For Research in
Applied Science and Engineering Technology



INTERNATIONAL JOURNAL FOR RESEARCH

IN APPLIED SCIENCE & ENGINEERING TECHNOLOGY

Volume: 5 Issue: IX Month of publication: September 2017

DOI: <http://doi.org/10.22214/ijraset.2017.9011>

www.ijraset.com

Call:  08813907089

E-mail ID: ijraset@gmail.com

Novel Techniques to Study Ancient Micro Amber from Tropical Beach Sand Reveal a Treasurehouse of Exceptionally Well Preserved Fossilized Microfungi

Sujata Dabolkar¹, Nandkumar Kamat²

^{1,2}. Mycological Laboratory, Department of Botany, Goa University, Taleigao, Goa, 403206, India.

Abstract: Simple, novel techniques developed for separation and simultaneous direct morphometric study of Amber Micro Fragments (AMF) from tropical beach sand are reported yielding rich information on unidentified fossilized microfungi. Sieves of different mesh sizes were used to separate AMF from tropical beach sand. Fractions below 150 µm which proved rich in AMF were used for manual retrieval using stereomicroscope. A handprinted slide microarray having 4 X 12 squares used for microscopic examination of multiple AMF mounts revealed AMF having either rough or smooth surfaces and with or without microinclusions. The microinclusions could be morphologically attributed to fungi. The potential for systematic and comprehensive studies to retrieve and examine AMF at high frequency from tropical beach sand in the world and especially those which are threatened due to sea level rise due to climate change was demonstrated. The potential of retrievable AMF from tropical beach sand in microbiological, metagenomic studies and as biological proxies to reconstruct bygone biospheres has been highlighted.

Keywords: Amber micro fragments (AMF), tropical beach sand, sea level rise, sieving, fossilized fungi, microarray

I. INTRODUCTION

Amber (Succinate=C₆H₆O₄) is the fossilized resin produced from the trunks and the roots of certain trees mainly belonging to family Pinaceae, found in Russia, France, Germany, Lebanon, Spain, Dominican Republic, Austria, USA, Myanmar, Japan and Mexico [1] in various environments such as in lignite mines, silts, sediments (Table 1).

The age of amber varies from 4 to 300 Million years. Size of amber ranges from sand grains to several centimeters [2]. Recent advances in spectrometry allow the development of physical characterization of amber to confirm that amber originates from various kinds of plants such as conifers and Fabaceae [3]. Various methods have been used (Table 2) to process the amber specimens. Differences between “true/natural/biogenic” and false/synthetic/artificial amber can be detected by some classical tests such as production of sweet, pine smell when burnt and insolubility in acetone and salt water test indicating flotation displayed by true, authentic amber [4]. Other tests include fluorescence test, refractive index test, IR spectroscopy, polarized light test [5]. Since gaps in knowledge about detection of amber in tropical beach sand samples were found in literature [6,7], the present study was aimed at development of novel techniques for relatively rapid high frequency isolation and microscopic visualization of amber using samples of tropical beach sand collected from coast in Goa, India. The locations primarily included local beaches facing threats due to sea level rise as it was felt that a degree of urgency is required to retrieve these locally and globally useful bioresources, before coastal erosion/submergence.

Table-1: Sources and Dimensions of Amber

Types	Source, Age & area	Size	References
Indian amber	Lignitic, Eocene (~52 My), Gujarat	Few cm	[10]
Indian amber	Core drilled-sandstones, Oligocene, Assam	one cm	[13]
Spanish amber	Coal, fusinite, cretaceous (105My)	One to two cm	[14]
Baltic amber	Baltic sea coast, Eocene (44My)	One to two mm to lumps of several kilograms	[4]

Table – 2: Techniques Used to Process the Amber Specimens

Techniques	References
Grinding and polishing of specimens	[15]
Clearance treatment with a neutral mixture of paraffin oil and alkylaromates	[16]
Trimming and embedding of amber inclusion in epoxy (Buehler)	[10]

A. Possible Origin of Amber In Tropical Beach Sand

Plants secrete resin when they suffer injury. The biota such as microbes, plant parts and even animals gets trapped inside this resin. Over the years, fossilization process occurs and resin is converted into amber along with the bioinclusions [8] which are especially informative about various taphonomic processes, paleoenvironmental conditions and important paleobiological aspects [9]. Research on Amber in India is however relatively recent. Indian subcontinent was separated from Gondawana land around 100 million years ago and collided with Asia 52 million years ago. The formation of Indian amber took place probably during Eocene period i.e. 53 million years ago [10]. Fossils records show that Coniferopsida such as *Walkomiella*, *Searsolia* and *Paranocladus* resin producing trees were once part of lower Gondwana [11]. These resin deposits could have been washed out and trapped in placer deposits and beach sands in various parts of India which were once part of Gondwana. Amber floats on saline water and can be deposited by wave action on beaches where it can get disintegrated [12].

II. MATERIALS AND METHODS

Goa is the second smallest state located on the west coast of India covering an area of 3702 sq kms and runs 105 km long and 65 km wide between latitudes 14° 53' 55" N and 15° 47' 59" N and longitudes 73° 40' 34" E and 74° 17' 03" E. The Arabian Sea marks the western boundary of the State.

Goa has been identified as a state highly vulnerable to sea level rise with more threats to the beaches. So, there is a sense of urgency to extract as much scientific information from the existing beaches. Geo referencing of sampling sites was aided by Google earth (Fig 1 and Table 3). Survey and sampling of beach sand from intertidal zones by pool sampling methods and subsequently separation, drying and sieving (PERFIT India) of 100 g each (1000 µm, 250µm, 150µm and 53µm) samples was carried out. Sand fractions obtained after sieving were studied using stereomicroscope (Olympus SZ51) and 20-30 amber micro fragments (AMF) were hand-picked, separated, tested and confirmed by standard salt water and acetone tests [4]. Alcohol and detergent washed clean glass slides were hand printed as a microarray with 4X12 grid lines having 48 equal microquadrats each labelled alphanumerically. The AMF specimens were randomly mounted on the labelled quadrats under stereomicroscope and the slide microarray (SM) was sealed tightly under a piece of transparent cello-tape (Scotch Easy Tear Self Adhesive Tape 18mm x 25m, 3M India limited). The SM was visualized under phase contrast microscope (Olympus BX41TF) equipped with photomicrographic attachment and studied for the presence or absence of bioinclusions (Fig 2). The specimens with bioinclusions were further studied for presence of fungi with respect to standard keys [4] and those showing presence of fungal forms were photographed.

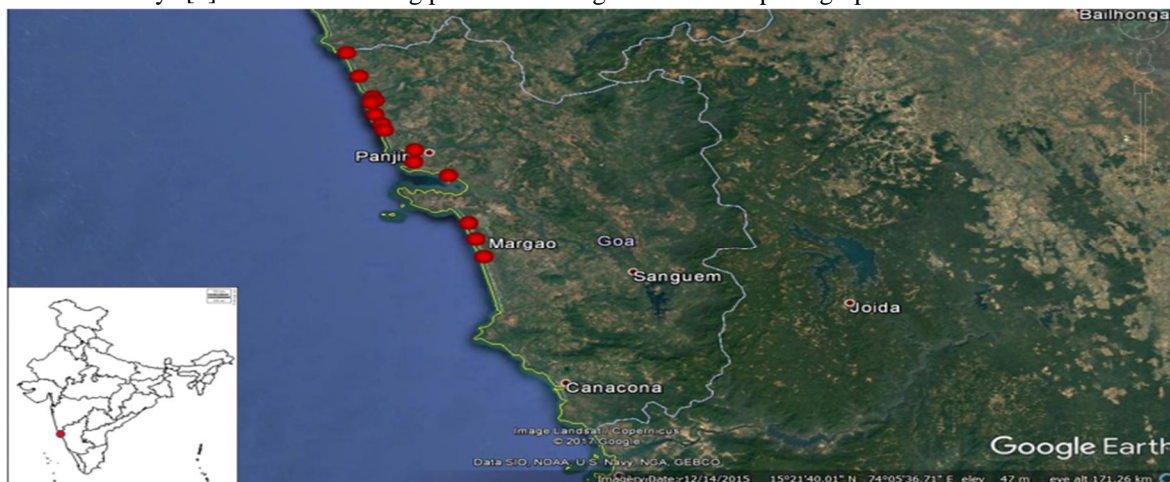


Fig. 1 Locations of the sampling sites (Source: Google Earth)

TABLE-III: Details Of Sample Locations

Locations	latitude	Longitude	Altitude MSL (m)
Keri	15°42'42.63"N	73°41'28.40"E	5
Arambol	15°41'1461"N	73°42'18.62"E	6
Mandrem	15°39'27.58"N	73°43'0169"E	3
Morjim	15°36'59.82"N	73°44'0320"E	3
Chapora	15°36'19.89"N	73°44'2954"E	3
Vagator	15°36'18.75"N	73°45'0634"E	3
Anjuna	15°34'37.25"N	73°42'05.82"E	3
Baga	15°33'45.15"N	73°44'57.56"E	3
Calangute	15°32'00.85"N	73°45'29.11"E	6
Sinquerim	15°29'56.15"N	73°46'01.80"E	5
Miramar	15°29'02.01"N	73°48'29.34"E	3
Siridao	15°26'37.07"N	73°51'20.03"E	10
Velsao	15°22'09.00"N	73°52'24.68"E	4
Arossim	15°19'28.40"N	73°53'49.65"E	4

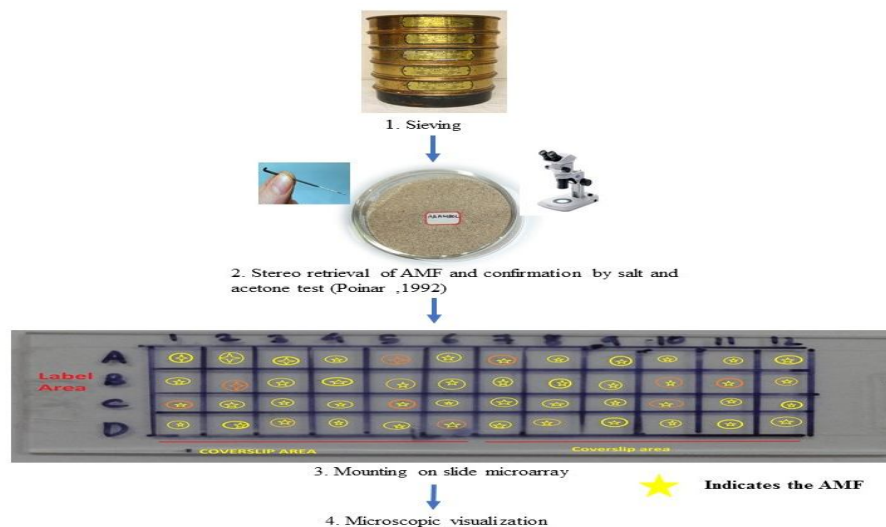


Fig. 2 Novel techniques to retrieve AMF and visualize bioinclusions using slide microarray

III. RESULTS

This work defines AMF as “thin microscopic, yellow to orange, smooth or rough, semi-transparent or opaque irregular fragments of transported amber within the size range of 70 μm or below and with or without bioinclusions of unidentified origin, age and resident interval in beach sand strata,”. Fourteen different sand samples were collected from as many sites from Goa (Table 3). Arambol and Mandrem samples were rich in AMF. Fraction between 150-53 μm and below 53 μm showed the presence of AMF. On average 20-30 pieces per 100g of sand were obtained. Interesting AMF retrieved from local sand samples are shown in Fig3 A-C and Fig 4 A-B. The AMF were found to be both opaque as well as transparent. Colour ranged from light yellow to dark orange, size ranged between 40-70 μm, with smooth (Fig 3 B) as well as rough surfaces (Fig 3A, 3C). AMF indicated presence of dark elongated spores of fungi (Fig 3A, 3B) and dark mitosporic fungi with bulbous hyphae (Fig 3C) and dark dematiaceous fungi with septate hyphae with dark spores (Fig 4A and 4B), matching with similar forms reported in literature [1,4].

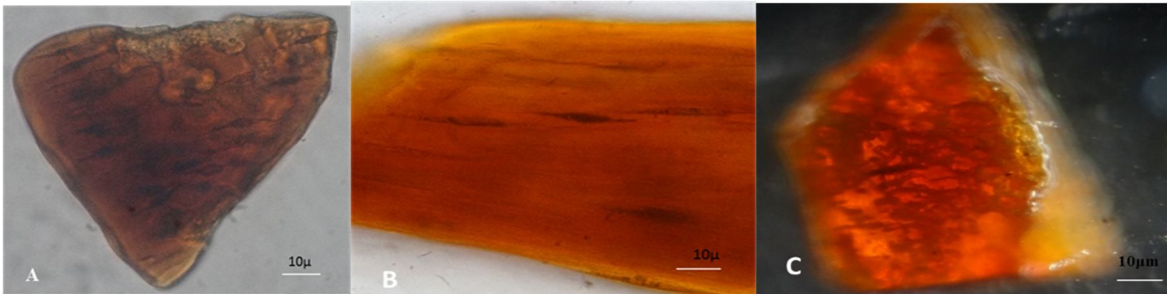


Fig. 3 (A-C) Interesting AMF retrieved from local sand samples showing, B- AMF with irregular shapes with smooth surface; A, C, A, B-dark elongated spores of fungi; C-Dark mitosporic fungi with bulbous hyphae

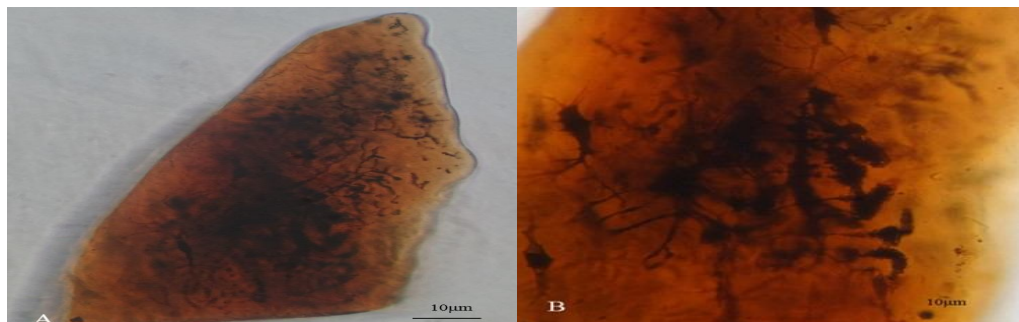


Fig. 4(A-B) Dark dematiaceous melanised septate, sporulating fungi

IV. DISCUSSION

This is the first report on recovery of Amber Micro Fragments (AMF) from any sand sample in the world and has vast implications for recovery of identical ancient micro amber from other such siliceous deposits. Compared to antiquity of peninsular Indian landmass relatively less attention has been paid to studies on Indian amber (~ 52 Ma). India has a coastline of about 7,517 km in length and has an EEZ of 2,305,143 km² which is more than one third of its land area [17]. Coastal region comprises the onshore coastal sediments which includes beach sand, dune sand and nearshore sediments extending from the coast up to the water depth of about 10-20 m offshore. Its intriguing to note that sand deposits in tropics have not been explored for presence of amber. Most of the studies have been carried on amber found in lignite mines [15] and oil shales [13]. A heavy influx of sediment from western and eastern flowing rivers occurs in India draining a vast ancient Gondwana landmass which contain fossiliferous metamorphic rocks [18]. So it is logical to consider beach sand as possible repositories getting an unquantifiable flux of transported amber of unknown inland origin and age. In other of parts of India samples of beach sand examined for mineralogical, geochemical composition have omitted mention of amber [6,7]. The omission could be due overlooking the AMF due to their very small size or mistaking their presence as mere stray coloured artefacts. Besides other coloured sand minerals such as rutile, garnet, Sillimanite could also mask AMF [19]. The detection of AMF in tropical beach sand is also useful indication of erosive and hydrodynamic transport processes which could have deposited such floatable material. The presence of drowned topography at the mouth of seven rivers of Goa (Chapora, Mandovi, Zuari, Sal, Talpona, Galgibaga and Sinkerim) indicates submergence of landmass [20]. Morjim-Arambol beach on Pernem coast runs from the mouth of Chapora river and river Tiracol joins the sea from north headland. Mineralogical investigation of the river sand had indicated the presence of important “heavy minerals” such as garnet, staurolite, epidote, chlorite, bluish-green hornblende, tourmaline, augite-diopside, hypersthene, and Zircon [20].

The techniques employed in present study are simple to use because sand samples could be dried in less time and sieving and isolation of AMF can be done rapidly using a stereomicroscope. Upto 96 AMF specimens could be mounted on SM. Optical clarity of SM improves with the thin cello tape as compared to AMF mounted and immobilized in viscous DPX. Use of cello tape also permits non-destructive retrieval of AMF after microscopy which is not possible with DPX mounts. The present studies showed that dimensions of Indian AMF ranged from 40-70µm and density per kilogram of sampled sand could be from 200-300 indicating their relative rarity. Larger pieces of fossiliferous amber need to be ground, polished and chemically treated [15,16,10], whereas, AMF as isolated in this work being small and thin can be easily processed, mounted in large number on a SM and could be studied using image analysis software. This work showed Keri, Arambol, Mandrem, Morjim, chapora, Baga, Miramar beach sand as most

promising for retrieval of AMF possibly due to influence of turbulent currents of Tiracol estuary, Chapora river, Baga creek, and Mandovi river which could transport amber from unidentified hinterland terrestrial sources towards the sea. Genesis of AMF in sand may be specific to coastal erosive tropical environment. Fig. 5 shows a postulated scheme to explain the occurrence of AMF in sampled beach sand. Disintegration of original large pieces of amber may take place because of demanding hot, humid, turbulent and erosive tropical conditions in India. Large pieces of amber can be easily disintegrated due to natural forces such as abrasion, friction, erosion, action of turbulent currents [12,21]. In natural sandy strata abrasion due to shifting sand particles which have sharp edges may also cause disintegration over period of time.

Out of all the processed AMF, 30% showed presence of fossilized fungi. Earlier studies on Indian amber were on bacterial filaments from a piece of amber from Assam [13] and fungal bodies well preserved in amber-embedded biota have been reported from lower Eocene formation of Gujarat [22]. Our techniques could be used at high frequency to study AMF from the tropical beaches India and the rest of the world. An excellent collection of the AMF from sand samples in India and different parts of the world can be prepared. The presence of postulated unidentified fungal inclusions in AMF makes it possible to explore paleofungal diversity and could even lead to possibility of microextraction of DNA for metagenomic analysis. Another benefit of recovery of basically thin sections of AMF is application of image analysis and biometrological software for gaining more qualitative and quantitative insights [23]. AMF may be subjected to FTIR and Micro-Raman Spectroscopy to study chemical composition. Microbial cultures from AMF could be revived by using innovative microbiological media and protocols [24]. Species such as *Bacillus sphaericus* [24], *Staphylococcus succinus* have been successfully isolated from 25–40 million years old Dominican amber [25] and *Micrococcus luteus* was identified from Israeli amber using metagenomic analysis [26]. Our studies indicated that more insights could be gained if a large collection of AMF with bioinclusions is obtained and used as biological proxies for reconstruction of a clearer picture of bygone microbiosphere of any tropical coastal location. A predominance of unidentified fossilized fungi in AMF observed in this work shows the rich promise and potential for paleomycological research helpful in understanding Gondwana fungal assemblages and their evolutionary biology [1]. The potential of further research on AMF is shown in Fig. 6. Considering the predicted threat to tropical beaches in world due to sea level rise [27,28] there is a certain degree of urgency to catalogue AMF before such important natural coastal repositories are lost due to erosion or submergence of the beaches or unforeseen natural or man-made catastrophes.

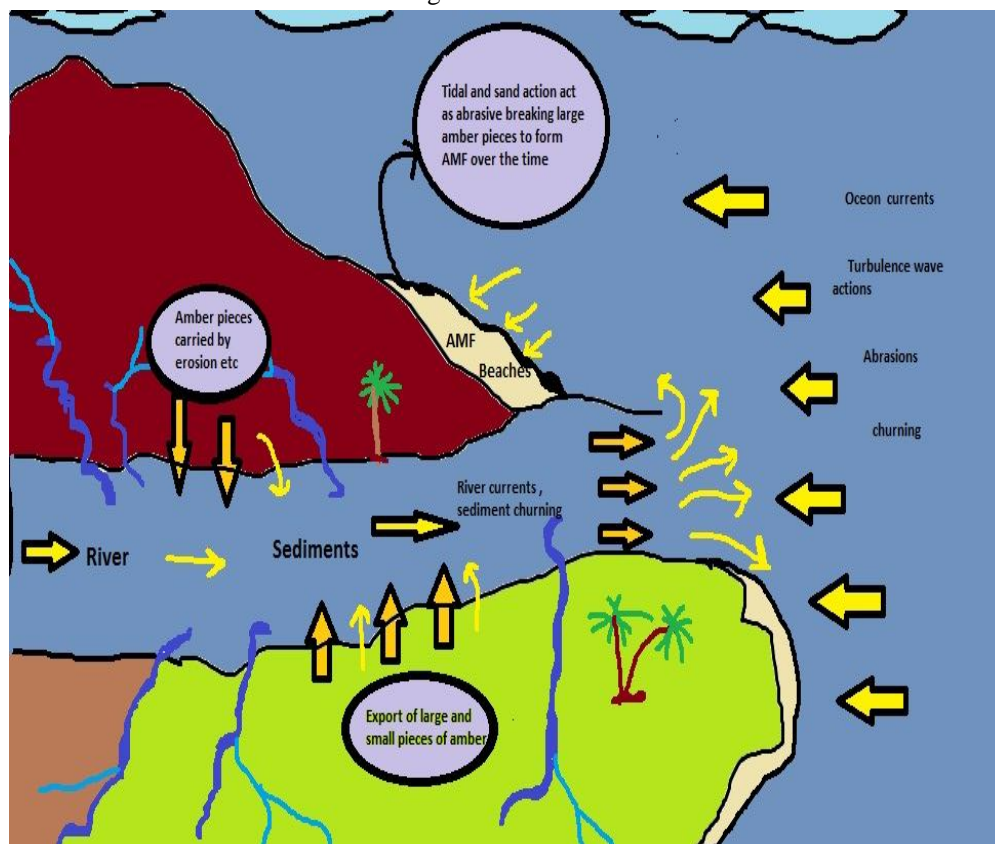


Fig. 5 Postulated scheme for formation of AMF in tropical beach sand

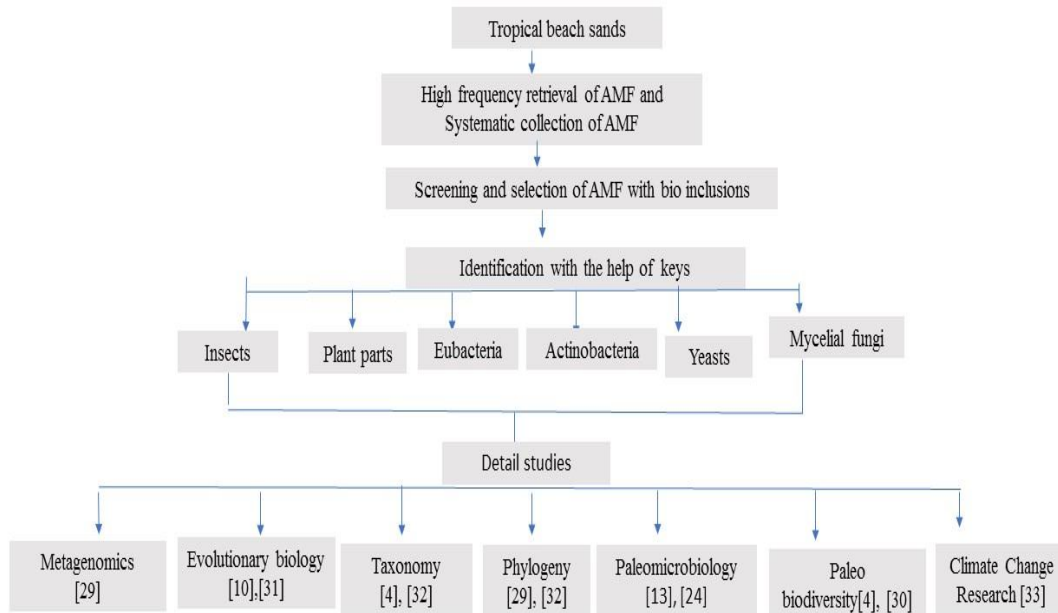


Fig. 6 Potential of further research on AMF from beach sand

V. CONCLUSIONS

Novel techniques combining sieving and slide microarray developed to retrieve and study AMF has made it possible to gain more insights for reconstruction of bygone microbiosphere of the location if a large collection of AMF with bioinclusions could be obtained and used as biological proxies to get rich insights into paleo biodiversity and paleoclimate. Systematic retrieval of AMF from different locations and recovery of useful ancient micro-organisms from their bioinclusions may open a new and exciting area of tropical amber microbiology and paleomycology in India. It has not escaped our notice that bioinclusions in AMF including fossilized fungi could be used as proxies for metagenomic studies by precision microsampling of DNA [29].

VI. ACKNOWLEDGMENTS

This work was supported by UGC-SAP Phase III – Biodiversity, ecophysiology, bioprospecting programme and forms part of ongoing work of Goa University Fungus Culture Collection and Research Unit (GUFCCRU) On mapping microbial biodiversity. We thank R.N.S Bandekar CO, Vasco Da Gama for partial funding.

REFERENCES

- [1] Schmidt, A.R., Beimforde, C., Seyfullah, L.J., Wege, S.E., Dörfelt, H., Girard, V., Grabenhorst, H., Gube, M., Heinrichs, J., Nel, A. and Nel, P., "Amber fossils of sooty moulds". *Review of Palaeobotany and Palynology*, 200, 53-64, 2014.
- [2] Rust, J., Singh, H., Rana, R. S., McCann, T., Singh, L., Anderson, K., and Kraemer, M. S., "Biogeographic and evolutionary implications of a diverse paleobiota in amber from the early Eocene of India". *Proceedings of the National Academy of Sciences*, 107(43),18360-18365, 2010.
- [3] Langenheim, J. H. "Plant resins. Oregon", etc.: Timber Press: 334-335, 2003. Retrieved from kbd.kew.org on 21/08/2017.
- [4] Poinar, G. O. "Life in amber". Stanford University Press, 1992. Retrieved from <https://books.google.co.in/books?id=J72F0r6AZOEC> on 06/07/2016.
- [5] Ascaso, C., Wierzchos, J., Carmelo Corral, J., López, R., and Alonso, J., "New applications of light and electron microscopic techniques for the study of microbiological inclusions in amber". *Journal of Paleontology*, 77(6), 1182-1192,2003.
- [6] Mohanty, A. K., Sengupta, D., Das, S. K., Saha, S. K., and Van, K. V., "Natural radioactivity and radiation exposure in the high background area at Chhatrapur beach placer deposit of Orissa, India". *Journal of environmental radioactivity*, 75(1),15-33, 2004.
- [7] Sreenivasa, A., Jayasheela, H. M., Bejugam, P., and Gujar, A. R., "Heavy mineral studies of beach sands of Vagathor, North Goa, India". *Int J Mod Eng Res (IJMER)*, 4, 70-78, 2014.
- [8] Pontin, C., and celi.,Ambr: scrigno del tempo. 1st edition. Cierre Edizioni.,2000.
- [9] Speranza, M., Ascaso, C., Delclos, X., and Peñalver, E., "Cretaceous mycelia preserving fungal polysaccharides: taphonomic and paleoecological potential of microorganisms preserved in fossil resins". *Geologica Acta: an international earth science journal*, 13(4), 2015.
- [10] Rust, J., Singh, H., Rana, R. S., McCann, T., Singh, L., Anderson, K., and Kraemer, M. S., "Biogeographic and evolutionary implications of a diverse paleobiota in amber from the early Eocene of India". *Proceedings of the National Academy of Sciences*, 107(43),18360-18365,2010.
- [11] Pant, D. D. The Lower Gondwana gymnosperms and their relationships. *Review of Palaeobotany and Palynology*, 37(1), 55-70, 1982.
- [12] Poinar, G. O. *Life in amber*. Stanford University Press, 1992. Available: <https://books.google.co.in/books?id=J72F0r6AZOEC> on 1/04/2016.

- [13] Girard, V., Salpêtre, I., Dutta, S., Bauer, H. and Raju, S.V., An enigmatic piece of amber in the Oligocene of the Assam-Arakan Basin (Eastern India)". *Geobios*, 48(1), 1-8, 2015.
- [14] Speranza, M., Wierchos, J., Alonso, J., Bettucci, L., Martín-González, A., and Ascaso, C., "Traditional and new microscopy techniques applied to the study of microscopic fungi included in amber". *Microscopy: science, technology, application and education*, 2, 1135-1145, 2010.
- [15] Alimohammadian, H., Sahni, A., Patnaik, R., Rana, R. S., and Singh, H., "First record of an exceptionally diverse and well preserved amber-embedded biota from Lower Eocene (~52Ma) lignites, Vastan, Gujarat". *Current Science*, 89(8), 1328-1330, 2005.
- [16] Schmidt, A. R., and Schäfer, U., "Leptotrichites resinatus" new genus and species: a fossil sheathed bacterium in Alpine Cretaceous amber. *Journal of Paleontology*, 79(1), 175-184, 2005.
- [17] Mascarenhas, A., "Human interference along the coast of Goa, western India", In: *coastal Resources of India: Environment and Socio-economics Issues*, V.K. Sharma (Editor), Bookwell Publishers, Bombay, pp.145-171, 2000.
- [18] Kunte, P. D., Sediment transport along the Goa-north Karnataka coast, western India. *Marine Geology*, 118(3-4), 207-216, 1994.
- [19] Nayak, B., Mohanty, S., and Bhattacharyya, P., "Heavy minerals and the characters of ilmenite in the beach placer sands of Chavakkad-Ponnani, Kerala Coast, India". *Journal of the Geological Society of India*, 79(3), 259-266, 2012.
- [20] Wagle, B. G., *Geomorphology of Goa and Goa Coast. A review*, Museo Geologico di Bologna, 1993. retrieved from www.nio.org on 21/08/2017.
- [21] Sutherland, D. G., Geomorphological controls on the distribution of placer deposits. *Journal of the Geological Society*, 142(5), 727-737, 1985.
- [22] Mukherjee, D., Bhupathy, S., and Nixon, A., "First record of an exceptionally diverse and well preserved amber-embedded biota from Lower Eocene (~52Ma) lignites, Vastan, Gujarat". *Current Science*, 89(8), 1328, 2005.
- [23] Dabolkar and Kamat, N., "Subsurface Zircons with Presumptive Biogenic Inclusions as Potentially Useful Proxies for Studying Precambrian Bygone Biospheres in Goa". *SSRN Electronic Journal*, retrievable from <https://goo.gl/2wom1X>, 2017.
- [24] Cano, R. J., and Borucki, M. K., Revival and identification of bacterial spores in 25-to 40-million-year-old Dominican amber. *Science*, 1060-1064, 1995.
- [25] Lambert, L. H., Cox, T., Mitchell, K., Rossello-Mora, R. A., Del Cueto, C., Dodge, D. E., and Cano, R. J., "Staphylococcus succinus sp. nov., isolated from Dominican amber". *International Journal of Systematic and Evolutionary Microbiology*, 48(2), 511-518, 1998.
- [26] Greenblatt, C. L., Baum, J., Klein, B. Y., Nachshon, S., Koltunov, V., and Cano, R. J., "Micrococcus luteus-survival in amber". *Microbial ecology*, 48(1), 120-127, 2004.
- [27] Voice, M., Harvey, N., and Walsh, K., Vulnerability to Climate Change of Australia's Coastal Zone: Analysis of gaps in methods, data and system thresholds, 2006. Report to the Australian Greenhouse Office, Canberra, Australia. Available on site <http://www.environment.gov.au/>.
- [28] Sarwar, M., (2005) "Impacts of sea level rise on the coastal zone of Bangladesh". [Online]. Available: http://static.weadapt.org/placemarks/files/225/golam_sarwar.Pdf.
- [29] Greenblatt, C. L., Davis, A., Clement, B. G., Kitts, C. L., Cox, T., and Cano, R. J. "Diversity of microorganisms isolated from amber". *Microbial ecology*, 38(1), 58-68, 1999.
- [30] Engel, M. S., A monograph of the Baltic amber bees and evolution of the Apoidea (Hymenoptera). *Bulletin of the American Museum of natural History*, 1-192, 2001.
- [31] Weitschat, W., Wichard, W., and Penney, D., *Baltic amber. Biodiversity of fossils in amber from the major world deposits*, Scientific Press Manchester 80-115, 2010.
- [32] DeSalle, R., Gatesy, J., Wheeler, W., and Grimaldi, D., "DNA Sequences from a Fossil Termite in Oligo-Miocene Amber and Their Phylogenetic Implications". *Am. J. Phys. Anthropol.*, 87, 291, 1992.
- [33] Brenkert, A. L., and Malone, E. L., "Modeling vulnerability and resilience to climate change: a case study of India and Indian states". *Climatic Change*, 72(1), 57-102, 2005.



10.22214/IJRASET



45.98



IMPACT FACTOR:
7.129



IMPACT FACTOR:
7.429



INTERNATIONAL JOURNAL FOR RESEARCH

IN APPLIED SCIENCE & ENGINEERING TECHNOLOGY

Call : 08813907089  (24*7 Support on Whatsapp)